

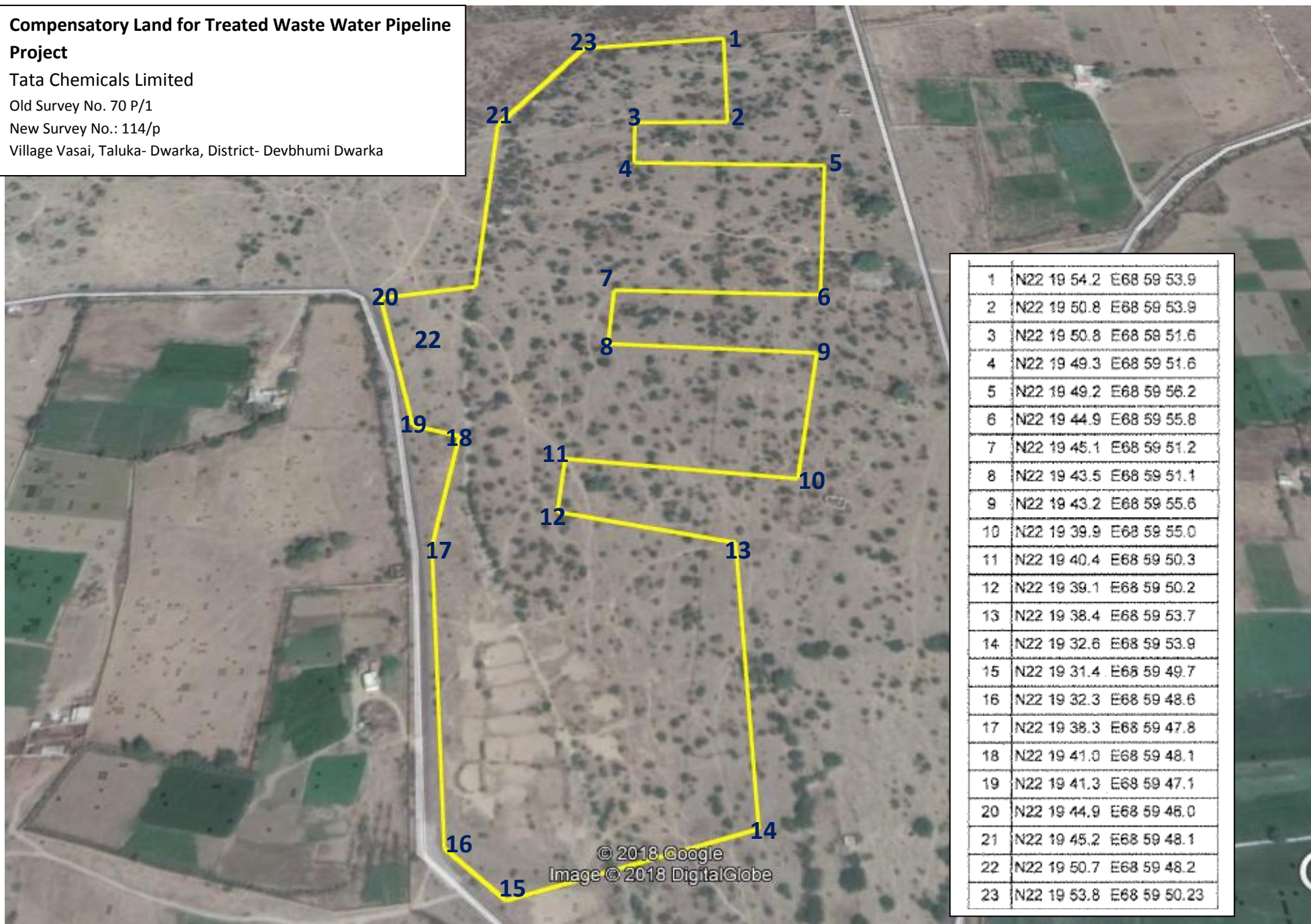
**Compensatory Land for Treated Waste Water Pipeline  
Project**

Tata Chemicals Limited

Old Survey No. 70 P/1

New Survey No.: 114/p

Village Vasai, Taluka- Dwarka, District- Devbhumi Dwarka



1	N22 19 54.2	E68 59 53.9
2	N22 19 50.8	E68 59 53.9
3	N22 19 50.8	E68 59 51.6
4	N22 19 49.3	E68 59 51.6
5	N22 19 49.2	E68 59 56.2
6	N22 19 44.9	E68 59 55.8
7	N22 19 45.1	E68 59 51.2
8	N22 19 43.5	E68 59 51.1
9	N22 19 43.2	E68 59 55.6
10	N22 19 39.9	E68 59 55.0
11	N22 19 40.4	E68 59 50.3
12	N22 19 39.1	E68 59 50.2
13	N22 19 38.4	E68 59 53.7
14	N22 19 32.6	E68 59 53.9
15	N22 19 31.4	E68 59 49.7
16	N22 19 32.3	E68 59 48.6
17	N22 19 38.3	E68 59 47.8
18	N22 19 41.0	E68 59 48.1
19	N22 19 41.3	E68 59 47.1
20	N22 19 44.9	E68 59 46.0
21	N22 19 45.2	E68 59 48.1
22	N22 19 50.7	E68 59 48.2
23	N22 19 53.8	E68 59 50.23