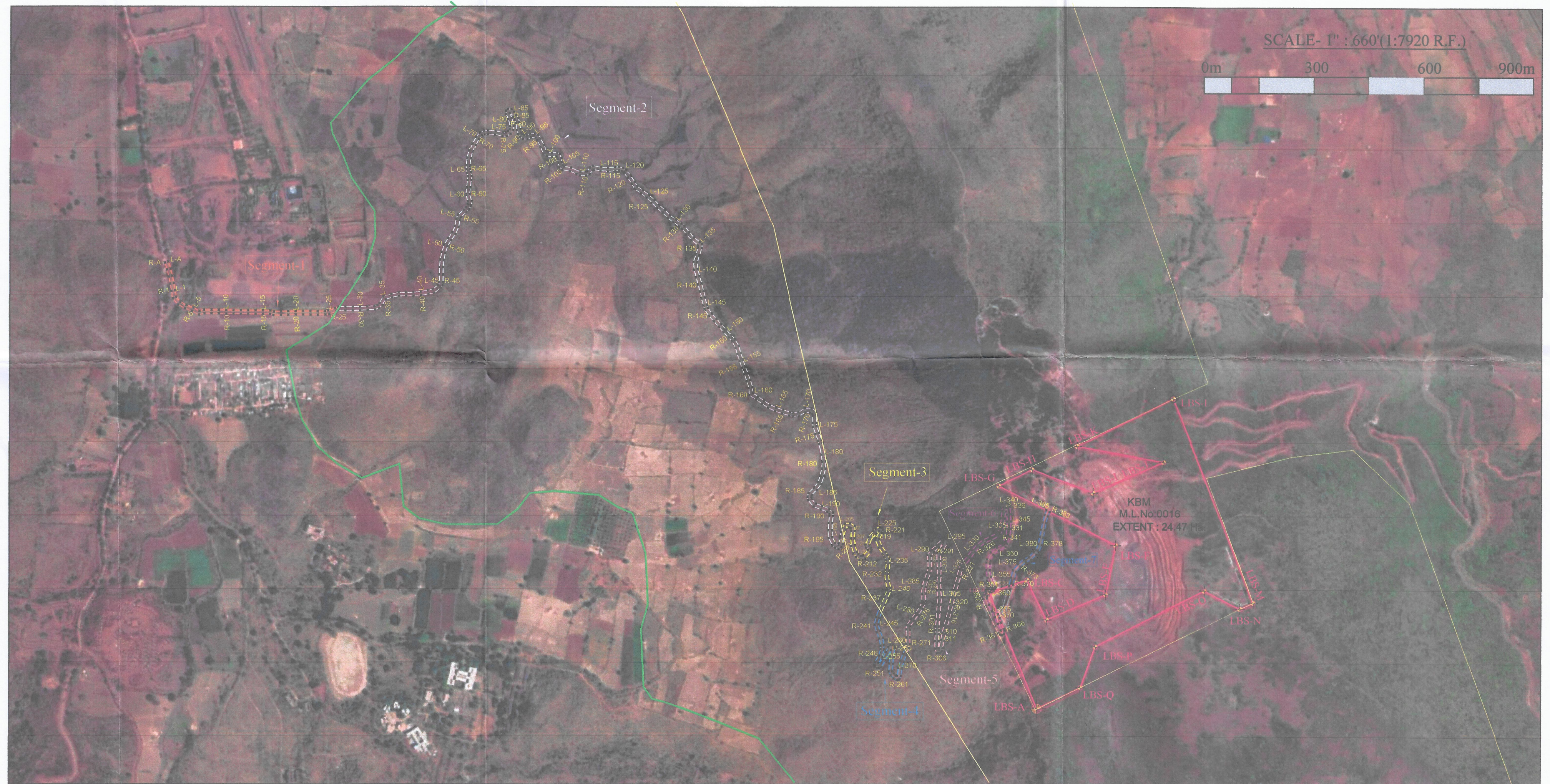


GOOGLE MAP SHOWING THE LOCATION OF PROPOSED APPROACH ROAD TO M. L. AREA OF KIRLOSKAR BHARATH MINES, M/s KIRLOSKAR FERROUS INDUSTRIES LIMITED, ML. NO. 0016 OVER AN EXTENT OF 4.035Ha IN SWAMYMALAI BLOCK FOREST, NEAR HULLIKUNTE VILLAGE, SANDUR TALUK, BALLARI DIVISION/DISTRICT, KARNATAKA STATE.



INDEX

	ML AREA OF M/s Kirloskar Ferrous Industries Limited (Erstwhile lease of M/s BMM as per CEC=24.47 Ha.)
	FOREST/ REVENUE BOUNDARY
	APPLIED AREA OF M/s KIOCL
	SEGMENT-1 (0.560 Ha)
	SEGMENT-2 (2.730 Ha)
	SEGMENT-3 (0.485 Ha)
	SEGMENT-4 (0.409 Ha)
	SEGMENT-5 (0.904 Ha)
	SEGMENT-6 (0.658 Ha)
	SEGMENT-7 (0.238 Ha)

NON-FOREST AREA

NON-PAID AREA						
Sl.No.	Description	Particular	Type of Land	Area in Ha	Distance in Km	Average Width
1	SEGMENT-1	Sy. No.217	Revenue(Patta)	0.0291	0.029	10m
2		Sy. No.218	Revenue(Patta)	0.1545	0.156	10m
3		Sy. No.220	Revenue(Patta)	0.267	0.268	10m
4		Sy. No.226	Revenue	0.0829	0.083	10m
5		Sy. No.207	Revenue	0.0263	0.027	10m
		Total		0.560	0.563	

FOREST AREA

Sl.No.	Sy.No/ Block	Land Type	Area in Ha	Distance in Km	Average Width	Remark
1	Segment-2	Forest	2.730	2.731	10m	S.M.BLOCK
2	Segment-3	Forest	0.485	0.486	10m	S.M.BLOCK(KIOCL Applied area)
3	Segment-4	Forest	0.409	0.412	10m	S.M.BLOCK
4	Segment-5	Forest	0.904	0.904	10m	S.M.BLOCK(KIOCL Applied area)
5	Segment-6	Forest	0.658	0.660	10m	S.M.BLOCK
6	Segment-7	Forest	0.238	0.238	10m	S.M.BLOCK
TOTAL			5.424	5.431		

APPROACH ROAD IN APPLIED AREA OF M/s KIOCL

Description	Land Type	Area in Ha	Distance in Km	Average Width	Remark
Segment-3 & 5	Forest	1.389	1.390	10m	S.M.BLOCK(Situated in Applied Area of M/s KIOCL)

Description	Land Type	Area in Ha	Distance in Km	Average Width
TOTAL AREA OF APPROACH ROAD FOR DIVERSION IN FOREST OF M/S KIRLOSKAR BHARAT MINES AFTER DELETING PART OF THE ROAD (1.389Ha) SITUATED IN APPLIED AREA OF M/S KIOCL LTD:	Forest (S.M.BLOCK)	4.035	4.041	10m

DGPS Survey by
ecoMen
ECOMEN LABORATORIES PVT LTD
(MINING, GEOLOGY, EXPLORATION, ENVIRONMENTAL)

Harshavardhan Reddy P
Mines Surveyor (Cert.No.SVR-826)
Ecomen Laboratories Pvt Ltd

CERTIFICATE

This is to Certify That The Approach Road Coordinates are fixed by Using DGPS Instrument in presence of Forest,Revenue,Dmg Officials and Representatives of Kirloskar Ferrous Industries Ltd.



Project Proponent
For M/s. Kirloskar Ferrous Industries Ltd.

Dy. Range Forest Officer
S.M.B. Section
Sandur South Range

Dy. Range Forest Officer
D.M.B. Section
Sandur South Range

RANGE FOREST OFFICER
Sandur South Range
Sandur