

MAP SHOWING GEO REFERENCED COMPLETE SOI TOPOSHEET MAP OF PROPOSED 132 KV S/C LILO LINE WITH FOREST BOUNDARY  
Project Name : - Construction of 132 KV D/C LILO from 132 KV S/C Bagidora - Mahi (PH-2) Line to 132 KV GSS Chordi, District - Banswara (Raj.)  
Proposal No. : FP/RJ/TRANS/34423/2018 (Area -1.9003 Ha.)



निर्वात के लिए नहीं NOT FOR EXPORT

OPEN SERIES  
MAP

No. F43C3

Scale 1:50,000

F43B14 (46E/14) Dungarpur RAJASTHAN	F43C2 (46I/2) Banswara RAJASTHAN	F43C6 (46I/6) Banswara RAJASTHAN
F43B15 (46E/15)	F43C3 (46I/3)	F43C7 (46I/7)
Panch Mahals GUJARAT F43B16 (46E/16)	F43C4 (46I/4) Dahod GUJARAT	F43C8 (46I/8)

1 Jhabua, MADHYA PRADESH.  
2 DISPUTED.

भारतीय सर्वेक्षण विभाग

SURVEY OF INDIA

1st Edition 2011.

Price : Rs. 70/-

CONVENTIONAL SYMBOLS

Express highway, with toll, with bridge, with distance stone		20
Roads, metalled, according to importance		
Roads, double cartage-way, according to importance		
Unmetalled road, Cart-track, Peck-track with pass, Foot-path		
Streams, with track in bed, underlined, Canal		
Dams, masonry or rock-filled, earthenwork, Weir		
River, dry with water channel, with island & rocks, Tidal river		
Submerged rocks, Shoal, Swamp, Roads		
Wells, lined, unlined, Tube-well, Spring, Tanks, perennial, dry		
Embankments, road or rail, bank, Broken ground		
Railways, broad gauge, double, single with station, under constn		
Railways, other gauges, double, single with distance stone, do.		
Mineral line or tramway, Kilm, Cutting with tunnel		
Contours with sub-features, Rocky slopes, Cliffs		
Sand features, (1) flat, (2) sand-hills(permanent), (3) dunes(shifting)		
Towns or Villages: inhabited, deserted, Fort		
Huts: permanent, temporary, Tower, Antiquities		
Temples, Chhatra, Church, Mosque, Idgah, Tomb, Graves		
Lighthouse, Lightship, Buoys: lighted, unlighted, Anchorage		
Mine, Vire on trails, Grass, Scrub		
Palms, palm-trees, other, Plantain, Conifer, Bamboo, Other trees		
Areas: cultivated, wooded, Surveyed tree		
Boundary, International		
State: demarcated, undemarcated		
District: subdivided, taluk or taluk, forest		
Boundary pillars: surveyed, unlocated		
Height, triangulated station, point, approximate		200 200
Band-mark: geodetic, tertiary, canal		BM 63-3 BM 63-2
Post office, Overhead tank		
Rail house or inspection bungalow, Circuit house, Police station		
Camping ground, Forest: reserved, protected		RF PF
Spaced names: administrative, locality or tribal		KIKRI NAGA
Hospital, Dispensary, Veterinary, Hospital / Dispensary		
Aerodrome, Helped, Tourist site		
Power line, with pylons surveyed, with poles unsurveyed		

NOTES

Heights are in metres and above Indian mean sea level.  
Contours are approximate.  
A relative height, 'd', represents the approximate height, in metres, between the top and bottom of a steep slope.  
The triangulated heights and contours in this sheet have not been adjusted to the heights of the spirit-levelled bench-marks and may not be strictly in accordance with them.  
Tanks, shown dry in this area usually contain water from July to February.  
Unmetalled roads in this sheet are made in dry season.  
The Gujarat-Rajasthan state boundary has been surveyed as pointed out by the local officials on the ground, but has not been verified by the Government concerned.  
Cultivation is periodic and dependent on rainfall.

COMPILATION INDEX

A Modern survey 1967-68.  
B Compiled from 1:25,000 and 1:31,680 Area Reservoir Project survey, 1964-68.  
C Compiled from 2-inch Mahi Project Commanded Area survey, 1955-56.  
Updated for Major details during 2004-05.

Projection - UTM Datum - WGS 84

Magnetic Variation from True North about 1° West in 2005.  
(Decreasing by about 1" annually).

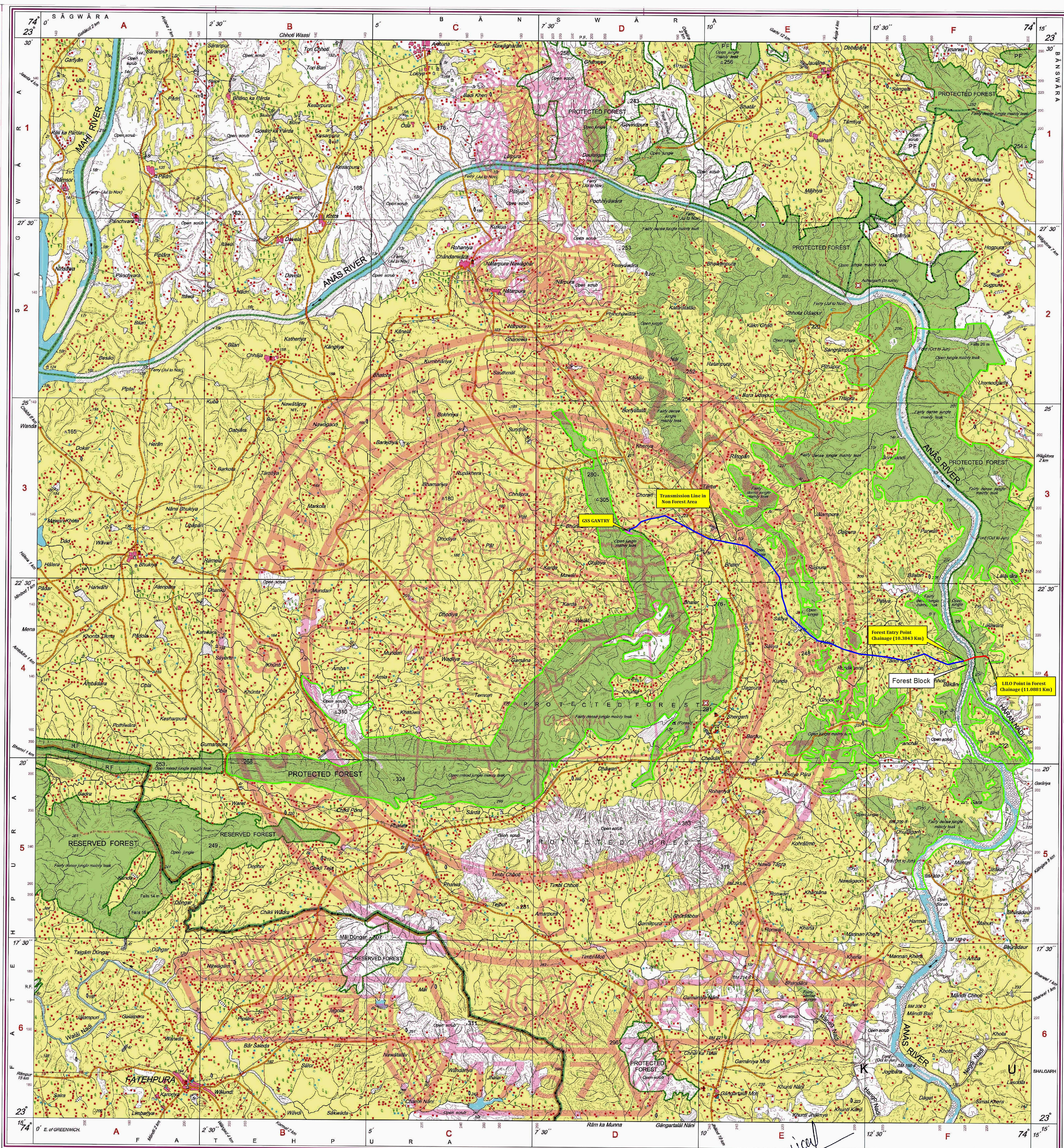
500 m to 1 cm  
1:50,000  
2 cm to 1 km  
Kilometres  
CONTOUR INTERVAL 20 METRES

For further details about this map, please contact  
Director  
Gujarat, Damani & Diu Geo-Spatial Data Centre  
Survey of India, Sector 10(A)  
Gandhinagar.

WEBSITE : www.surveyofindia.gov.in

Reproduction in whole or part by any means is prohibited  
without the written permission of Survey of India, the  
National Mapping Agency.

GOVERNMENT OF INDIA COPYRIGHT, 2011.



REG. No. P D F 411 (GD&D GDC-1:50,000)

भारत के सर्वेक्षण, सर्वेक्षण रा. 4080, के नियमों के अनुसार,  
Published under the direction of Swarna Subba Rao, B.E., Surveyor General of India,  
Survey of India, Hathi Bunka Estate, Post Box No.37, Dehra Dun-248001 (Uttarakhand),  
Department of Science & Technology, Government of India.

(Pankaj Agarwal)  
Executive Engineer (T&C)  
R.R.V.P.N.L., Chittorgarh (Raj.)

PRINTED AT THE SOUTHERN PRINTING GROUP OF SURVEY OF INDIA.