



Government of West Bengal
Directorate of Forests

Office of the Divisional Forest Officer, Jalpaiguri Division
OLD COURT CAMPUS, COLLECTORATE AVENUE, HAKIMPARA,
JALPAIGURI - 735 101

TEL: (03561)– 232016, FAX: (03561)– 222218, EMAIL: dfojalpaiguri@gmail.c

No. 1771

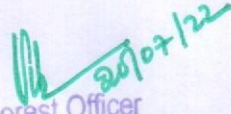
/8-8

Dated: 19-07-2022

Proposal No.: FP/WB/OFC/141578/2021 Area (ha.): 0.4278 hectare

Area: 0.4278 Ha (Total 10.695 Km) (Kunia busty to Jaldhaka bridge: 8.355 Km + Diana Forest: 0.410 Km + Carron to Diana Forest: 1.930 Km)

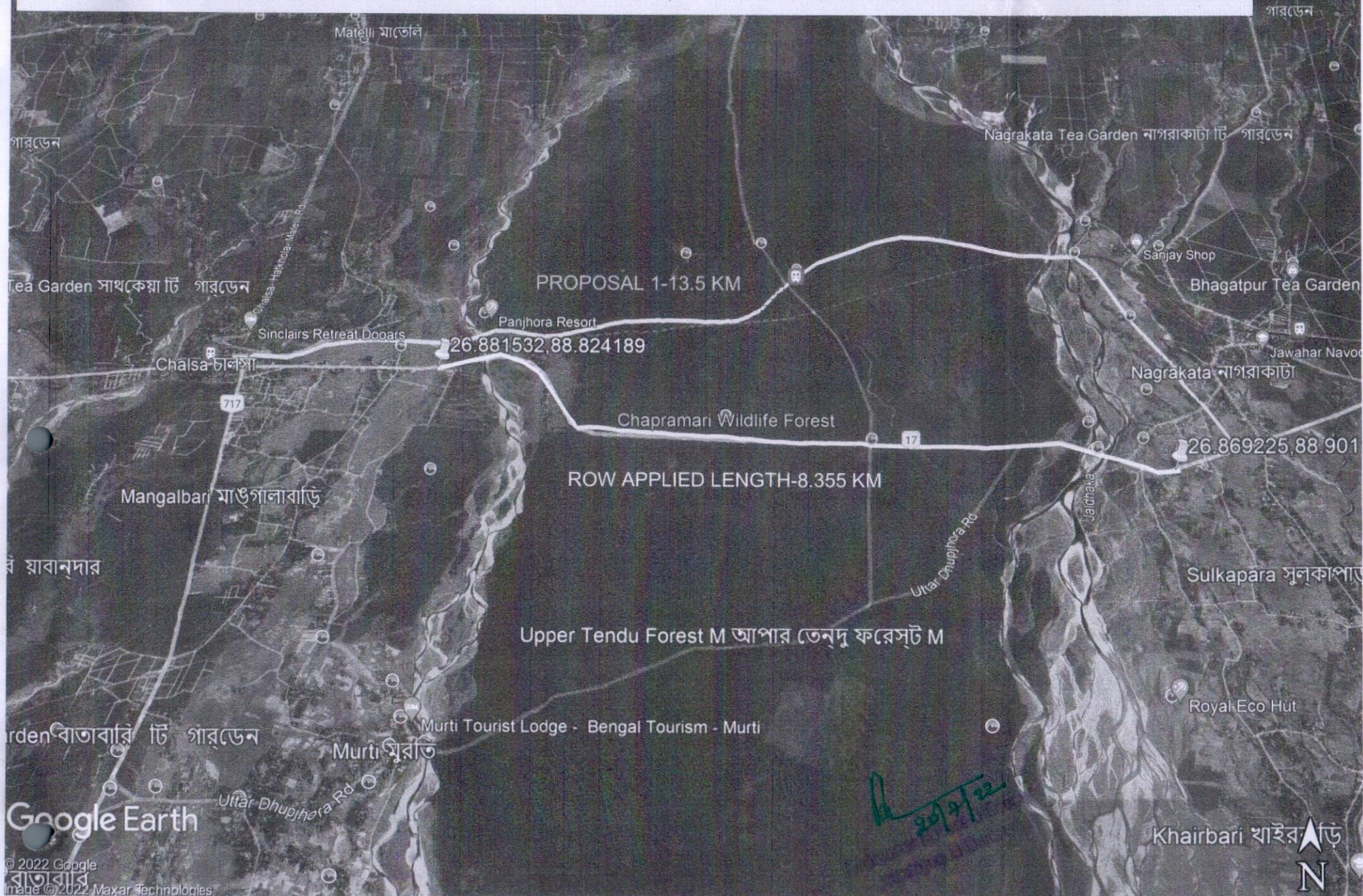
The project may not cause any significant damage to existing Flora and Fauna as it is underground in nature. Declaration was given by the user agency saying that no tree felling is involved during execution of the Project. The alternates routes were explode by the User Agency, the details of these routes are attached herewith for your kind perusal.


Divisional Forest Officer
Jalpaiguri Division
Vikas V
Divisional Forest Officer
Jalpaiguri Division

Proposal 1 FOR 0.3342 (H) railway track-13.5 Km

Legend

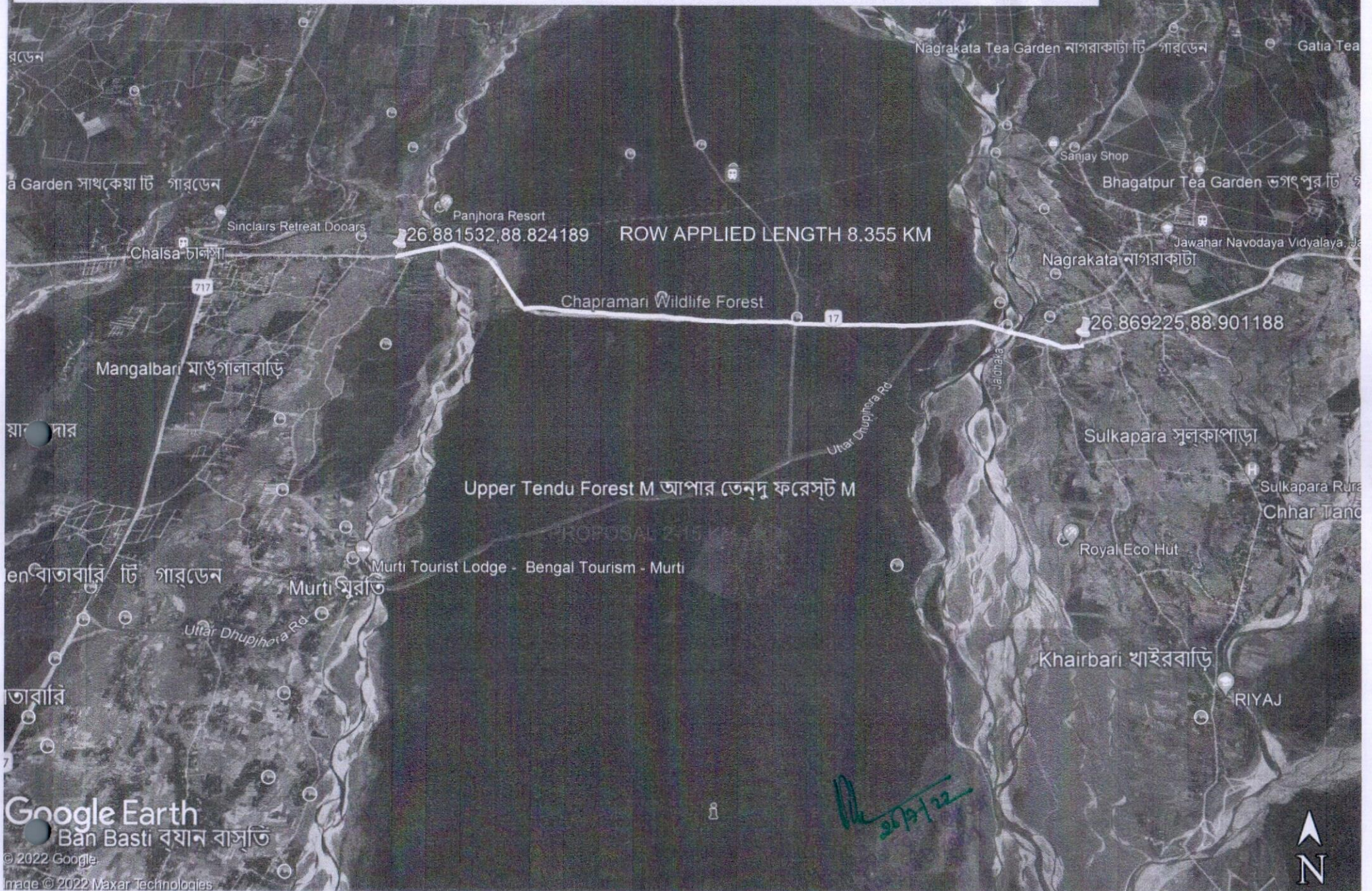
This land coming under forest and its length is more than proposed route length i.e., 13.5 Km so it could affect us economically and this route is along the railway track hence our Future maintenances not possible due to road access not available. so it's not feasible for us.



Proposal 2 FOR 0.3342 (H) Uttar Dhupjhora road -15 Km

This land coming under forest and its length is more than proposed route length i.e., 15 Km so it could affect us economically. So, this route is not feasible for us.

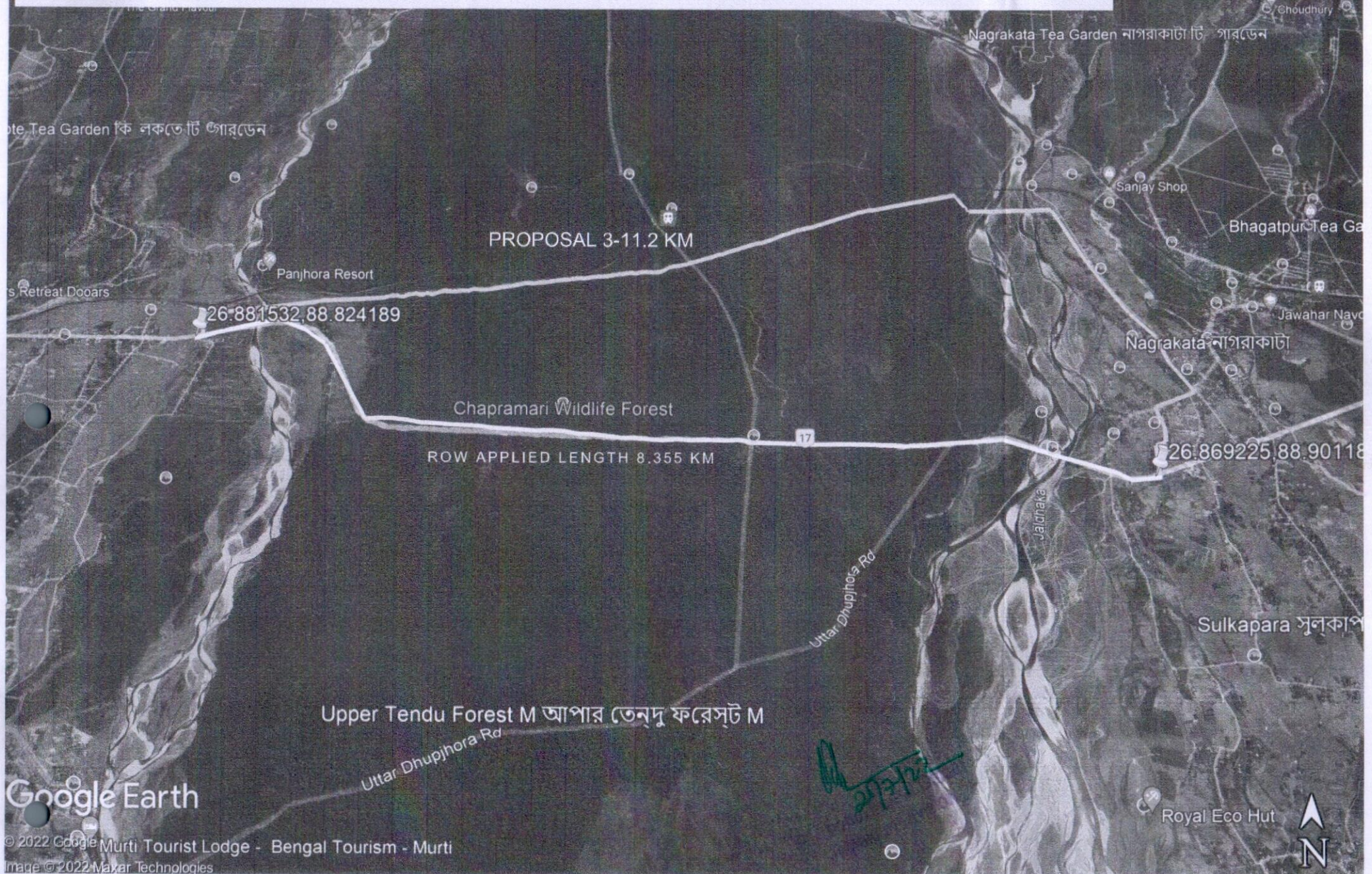
Legend



Proposal 3 FOR 0.3342 (H) along the Oil india gas line route.11.2 km

This land coming under forest and its length is more than proposed route length i.e., 11.2 km so it could affect us economically and this path along with Oil India gas pipe line and our Future maintenances it's not possible due to road access not available. So, this route is not feasible for us.

Legend



Proposal 1 for 0.0772 (H) along the railway track-2.7 km and river side

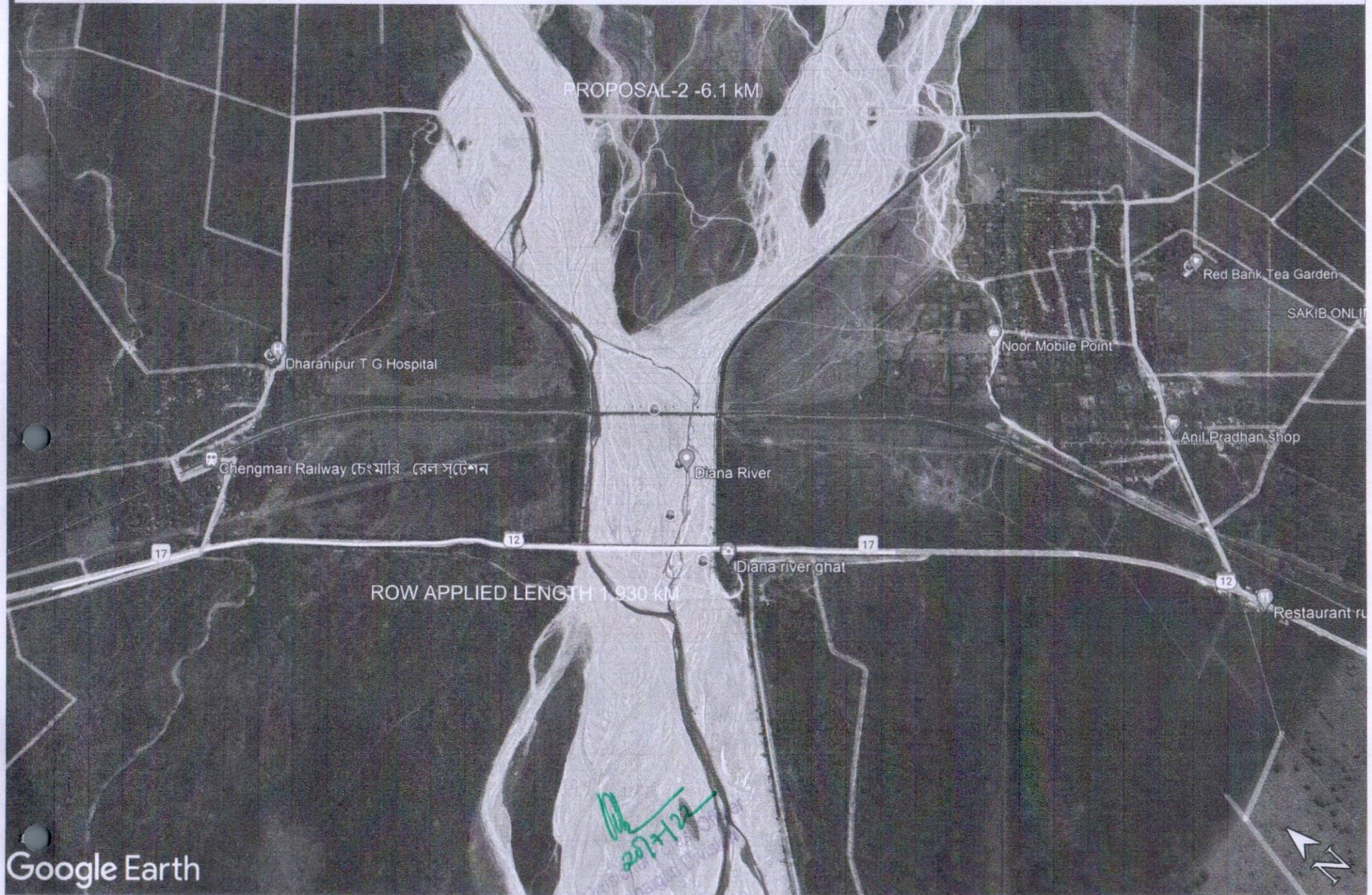
Legend

This land coming under forest and its length is more than proposed route length i, e 2.7 km so it could affect us economically and river side access road not suitable to lay OFC since there is no proper road access. So, this route is not feasible for us.



Proposal 2 for 0.0772 (H) via Dharanipur hospital river crossing- tourist lodge & N Legend

This land coming under forest and its length is more than proposed route length i.e., 6.1 km so it could affect us economically. So, this route is not feasible for us.



Proposal 3 for 0.0772 (H)-Via chengmari tea estate high school,Redbank tea garde Legend

This land coming under forest and its length is more than proposed route length i.e., 13 km so it could affect us economically.
So, this route is not feasible for us.



prospal 1-for 0.0164(h) Via Locksan bus stop- Kali Khola to changamri carron road-3 Km

This land coming under forest
and its length is more than proposed route length i.e., 3 km hence it could affect us economically. So, this route is not feasible for us.



proposal 2 - for 0.0164 (h) land-via Hitachi ATM to Sagar (near NH)-2.1 Km

This land coming under forest
and its length is more than proposed route length i.e., 2.1 km so it could affect us economically. So, this route is not feasible for us.



proposal 3-for 0.0164(h) via railway track-3 Km

This land coming under forest
and its length is more than proposed route length i.e., 3 km so it could affect us economically. So, this route is not feasible for us.

