



निर्यात के लिए नहीं NOT FOR EXPORT

OPEN SERIES  
MAP

No. G43A8

Scale 1:50,000

G43A3 (45A/3)	G43A7 (45A/7)	G43A11 (45A/11)
G43A4 (45A/4)	G43A8 (45A/8) Jodhpur RAJASTHAN	G43A12 (45A/12)
G43G1 (45B/1)	G43G5 (45B/5)	G43G9 (45B/9)

1 Jaisalmer, RAJASTHAN.  
2 Bikaner, RAJASTHAN.

भारतीय सर्वेक्षण विभाग

SURVEY OF INDIA

1st Edition 2008.

Price : Rs. 50/-

#### CONVENTIONAL SYMBOLS

Express Highway: with toll; with bridge; with distance stone	20
Roads, metalled: according to importance	20
Roads, double carriageway: according to importance	20
Unmetalled Road: Cart-track, Pack-track and pass. Foot-path	20
Stream: with track in bed; underflow. Canal	20
Dam: masonry or rock-filled; earthwork; Wall	20
River: dry with water channel; with island & rocks. Tidal river	20
Submerged rocks. Shoal. Swamp. Reeds	20
Wells: lined; unlined. Tube-well. Spring. Tank: perennial; dry	20
Embankments: road or rail; tank. Broken ground	20
Railways, broad gauge: double; single with station; under constn.	20
Railways, other gauges: double; single with distance stone; do.	20
Mineral line or tramway. Kln. Cutting with tunnel	20
Contours with sub-features. Rocky slopes. Cliffs	20
Sand features: (Mft. Dunes-hills permanent). (Dunes shifting)	20
Towns or Villages: inhabited; deserted. Fort	20
Hill: permanent; temporary. Tower. Antiquities	20
Temple. Chattri. Church. Mosque. Idgah. Tomb. Graves	20
Lighthouse. Lightship. Buoy: lighted; unlighted. Anchorage	20
Mini. Vine on trellis. Grass. Scrub	20
Palms: palmistry; other. Plantain. Conifer. Bamboo. Other trees	20
Areas: cultivated; wooded. Surveyed tree	20
Boundary: International	20
state: demarcated; undemarcated	20
district: subdivision; tahsil or taluk; forest	20
Boundary Pillars: surveyed; unlocated; village junction	20
Heights, triangulated: station; pole; approximate	20
Bench-mark: geodetic; tertiary; canal	20
Post office. Telegraph office. Overhead tank	20
Rest house or inspection bungalow. Circuit house. Police station	20
Camping ground. Forest: reserved; protected	20
Spaced names: administrative; locality or tribal	20
Hospital. Dispensary. Veterinary hospital	20
Aerodrome. Helipad. Tourist site	20
Power line: with pylons surveyed; with poles unsurveyed	20

#### REFERENCE

NH 15 National Highway No. 15

#### NOTES

Heights are in metres and above Indian mean sea level. Contours are approximate.  
A relative height, e.g., 50, represents the approximate height, in metres, between the top and bottom of a steep slope.  
A relative height, e.g., 50, against a well, indicates its total depth in metres.  
Cart tracks in this sheet are generally motorable in dry season.  
Cultivation is periodic and dependent on rainfall.  
Pillar is a tank which is used for collection of water.  
Pillar is a place where there is arrangement of saving drinking water.  
Tanks, shown dry, in this area usually contain water from July to September.

#### COMPILED INDEX

A. Surveyed during 2005-06.

A

Projection - UTM Datum - WGS 84

Magnetic Variation from True North about  $\frac{1}{2}$  East in 2005.  
(Increasing by about 1' annually).

1:50,000

500 m to 1 cm  
Metres 1000 500 0 2 cm to 1 km  
3 Kilometres

CONTOUR INTERVAL 10 METRES

For further details about this map, please contact

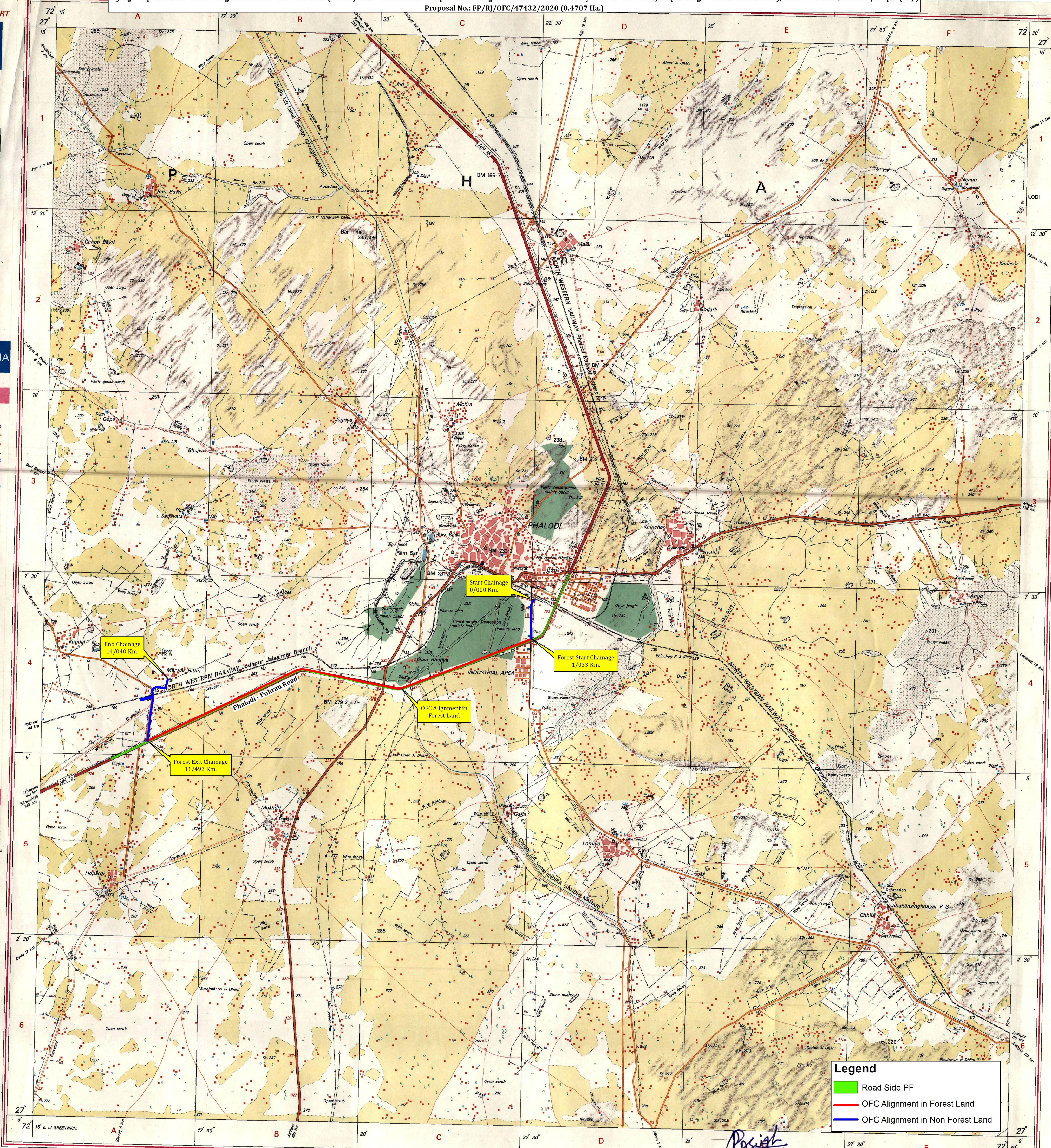
Director  
Rajasthan Geo-Spatial Data Centre  
Survey of India  
Sector 10, Vidyaadhar Nagar  
Jaipur.  
Fax : 0141 - 2236891

WEBSITE - www.surveyofindia.gov.in

Reproduction in whole or part by any means is prohibited  
without the written permission of Survey of India, the  
National Mapping Agency.

GOVERNMENT OF INDIA COPYRIGHT, 2008.

MAP SHOWING TOPOSHEET MAP OF REQUIRED FOREST LAND  
Laying of Optical Fibre Cable along the Phalodi - Pokhran road (NH-11) from Phalodi BSNL Telephone Exchange to Beethadi Gram Panchayat under NOFN Project (Chainage - 0.00 to 14.040 Km.), Tehsil - Phalodi, District-Jodhpur(Raj.)  
Proposal No.: FP/RJ/OFC/47432/2020 (0.4707 Ha.)



#### Legend

- Road Side PF
- OFC Alignment in Forest Land
- OFC Alignment in Non Forest Land

SDE (NOFN)  
Jodhpur

भारत के सर्वेक्षक के निदेशानुसार प्रकाशित.  
Published under the direction of Surveyor General of India,  
Survey of India, Hathi Bakshi Estate, Post Box No. 37, Dehra Dun - 248001 (Uttarakhand),  
Department of Science & Technology, Government of India.

PRINTED AT THE WESTERN PRINTING GROUP OF SURVEY OF INDIA.