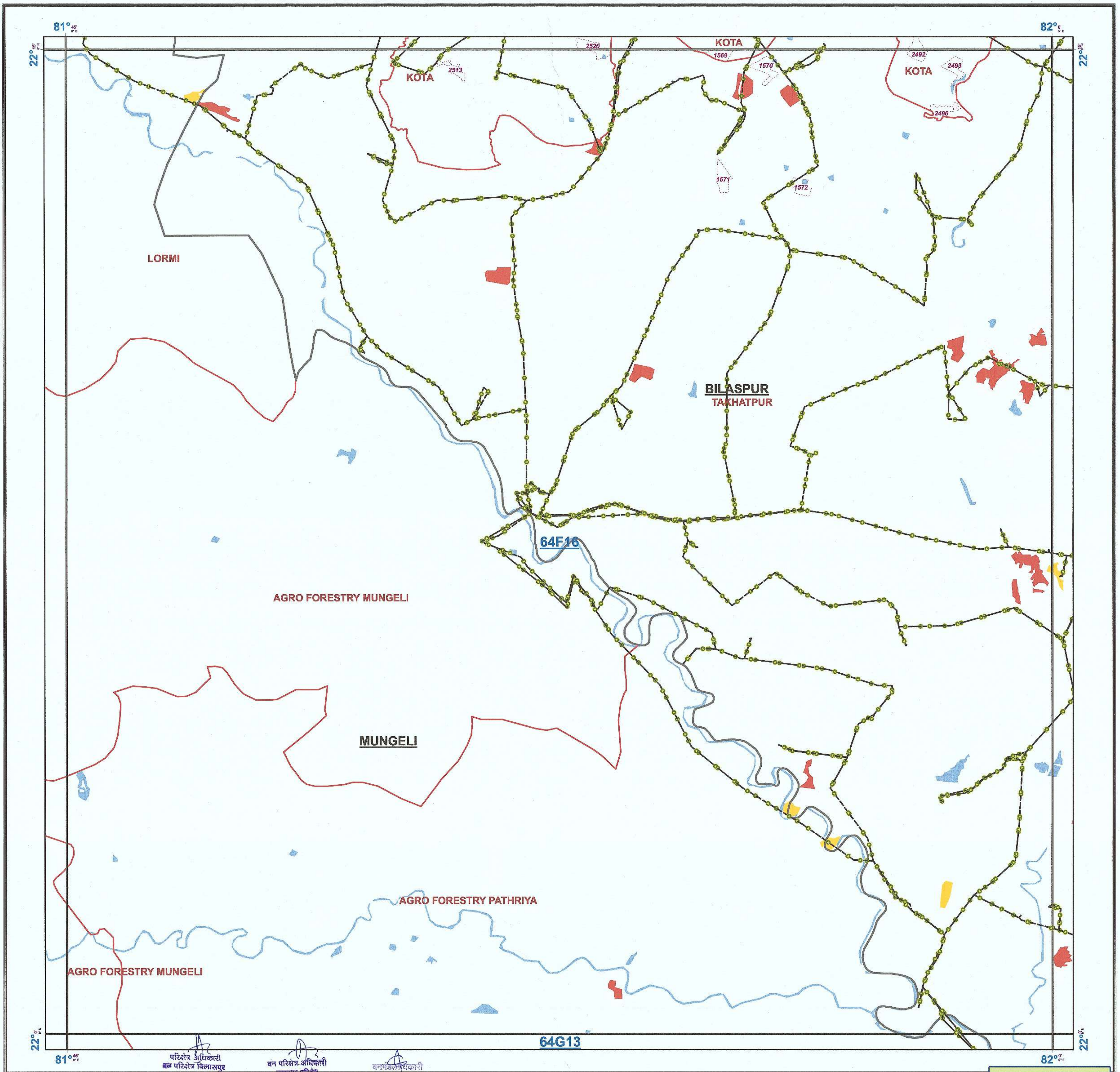


# FOREST COVER MAP

(OF PROPOSED FOREST/REVENUE LAND DIVERSION TO LAY OPTICAL FIBER IN VILLAGES OF BILASPUR DIVISION FOR BHARATNET PROJECT PHASE - II)

TOPOSHEET NO. 64-F 16

SCALE - 1:50,000



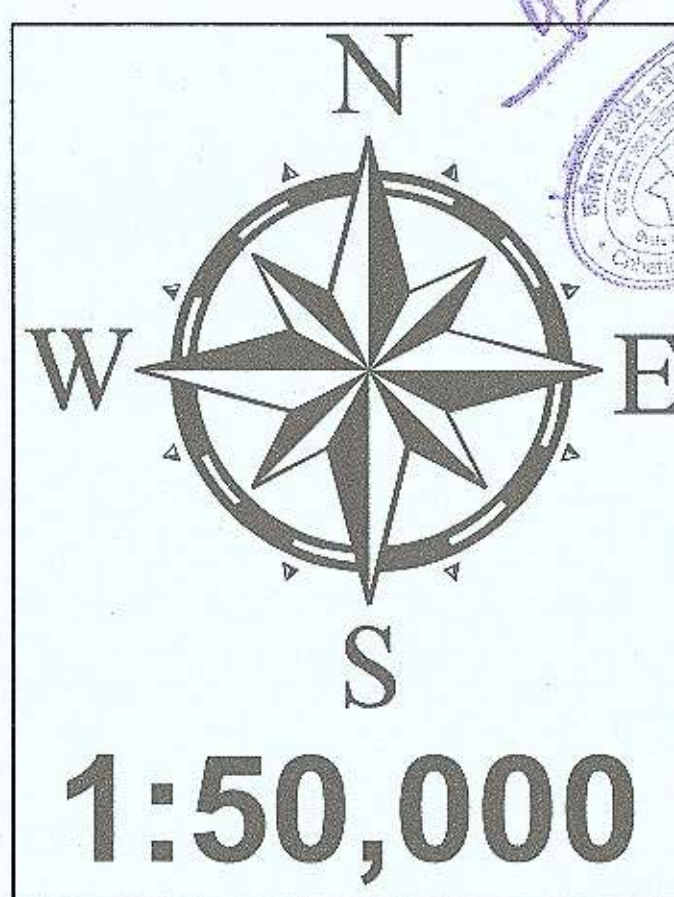
## Legend

- Bilaspur\_LINE
- Division\_Boundary
- Range\_Boundary
- Compartment\_Boundary
- Vegetation**
- Moderately Dense Forest
- Non-Forest
- Open Forest
- Scrub
- Very Dense Forest
- Water

## MAP PREPARED FOR C.H.I.P.S., RAIPUR (C.G.)

### TOPOSHEET INDEX

64F11	64F15	64J3
64F12	64F16	64J4
64G9	64G13	64K1



### NOTE:-

\* Forest Cover based on Digital Interpretation of Data Period 2017  
IRS P6-LISS-III 23.5 m, IRS-Resourcesat 2 FSI Report 2015. □

REG NO:

MAP SUBJECT:  
FOREST COVER MAP OF PROPOSED FOREST/REVENUE FOREST LAND PATCH OF 6.897ha, TO BE DIVERTED TO LAY OPTICAL FIBER CABLE IN SELECTED VILLAGES OF BILASPUR DIVISION FOR BHARATNET PROJECT PHASE - II, IN FAVOR OF CHHATTISGARH INFOTECH PROMOTION SOCIETY (CHIPS) RAIPUR (C.G.)

### SHAPEFILE PROVIDED BY USER AGENCY

SCALE 1:50,000	CoOrdinates/Projection System used :
Prepared by RGC, Bilaspur (C.G.)	COORDINATE SYSTEM OF SHAPEFILE: Geographic Coordinate System: GCS_WGS_1984 Datum: D_WGS_1984 Prime Meridian: Greenwich Angular Unit: Degree
Stock Mapping by	
Data Source (s) :	
1. Forest Boundaries are based on Stock Map (Scale 1: 15000) 2. Natural Features are based on Digital SOI Data (Scale 1: 50000)	
Digitally Compiled and Printed at : REGIONAL GEOMATIC CENTER, BILASPUR	

निर्यात के लिये नहीं  
NOT FOR EXPORT

Disclaimer: - The Map provided is subject to inherent discrepancy amongst layers associated with incompatibility between different platforms of reference (L.C.C., W.G.S. 84 etc.) and probable human error angle in digitization. The user agency is advised to use the feature of map subject to prior authentication & supervision by the authorized person of the concerned forest division. The GEOMATIC CENTER BILASPUR shall not be responsible for any complications (legal or otherwise), arising out of this map.

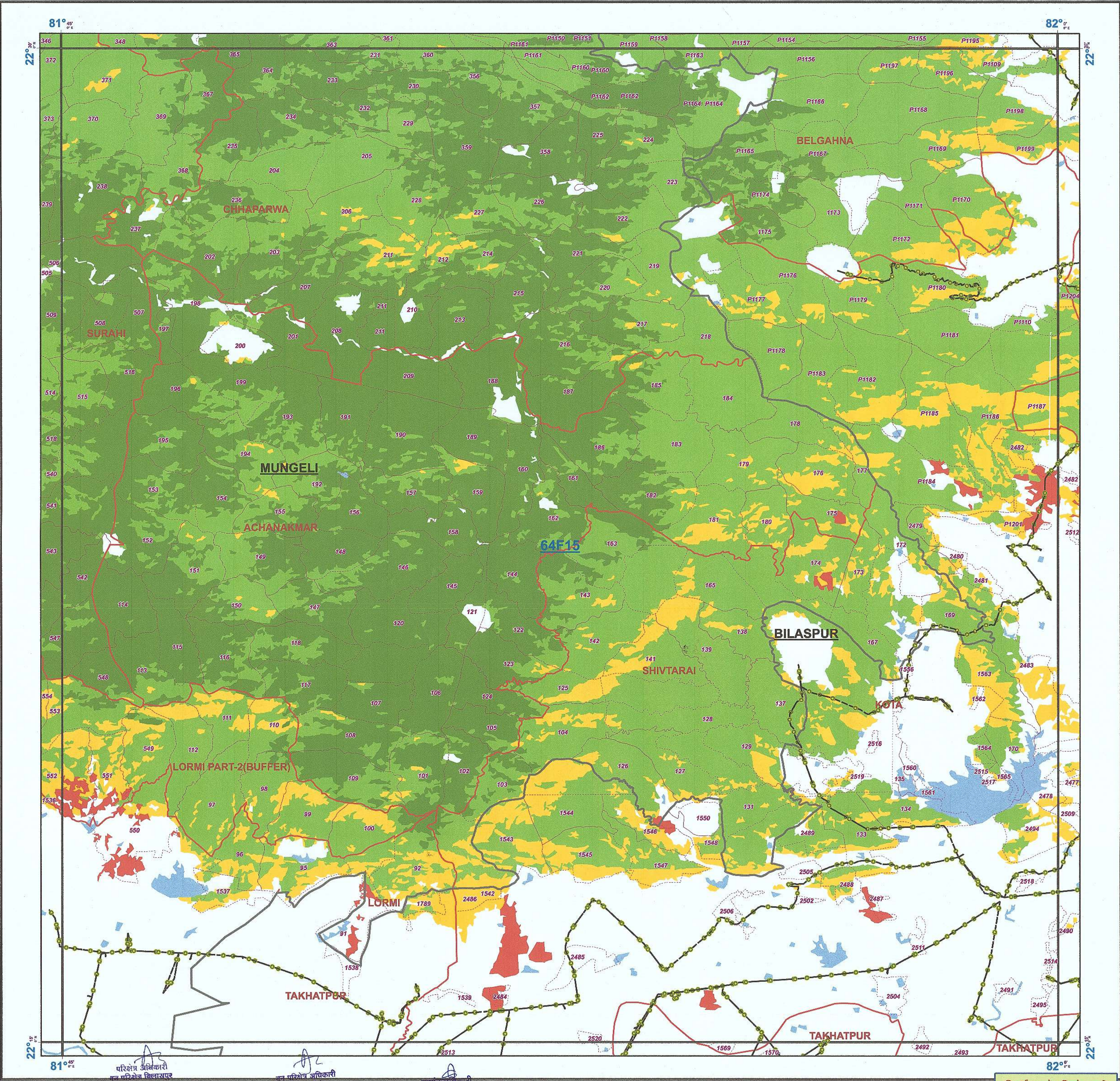


# FOREST COVER MAP

(OF PROPOSED FOREST/REVENUE LAND DIVERSION TO LAY OPTICAL FIBER IN VILLAGES OF BILASPUR DIVISION FOR BHARATNET PROJECT PHASE - II)

TOPOSHEET NO. 64-F 15

SCALE - 1:50,000



## Legend

- Bilaspur\_LINE
- Division\_Boundary
- Range\_Boundary
- Compartment\_Boundary
- Vegetation**
- Moderately Dense Forest
- Non-Forest
- Open Forest
- Scrub
- Very Dense Forest
- Water

## MAP PREPARED FOR C.H.I.P.S., RAIPUR (C.G.)

### TOPOSHEET INDEX

64F10	64F14	64J2
64F11	64F15	64J3
64F12	64F16	64J4



**NOTE:-**  
\* Forest Cover based on Digital Interpretation of Data Period 2017  
IRS P6-LISS-III 23.5 m, IRS-Resourcesat 2 FSI Report 2015. □

REG NO:

**MAP SUBJECT:**  
FOREST COVER MAP OF PROPOSED FOREST/REVENUE FOREST LAND PATCH OF 6.897ha, TO BE DIVERTED TO LAY OPTICAL FIBER CABLE IN SELECTED VILLAGES OF BILASPUR DIVISION FOR BHARATNET PROJECT PHASE - II, IN FAVOR OF CHHATTISGARH INFOTECH PROMOTION SOCIETY (CHIPS) RAIPUR (C.G.)

### SHAPEFILE PROVIDED BY USER AGENCY

SCALE 1:50,000	CoOrdinates/Projection System used :
Prepared by RGC, Bilaspur (C.G.)	COORDINATE SYSTEM OF SHAPEFILE: Geographic Coordinate System: GCS_WGS_1984 Datum: D_WGS_1984 Prime Meridian: Greenwich Angular Unit: Degree
Stock Mapping by	
Data Source (s) :	1. Forest Boundaries are based on Stock Map (Scale 1: 15000) 2. Natural Features are based on Digital SOI Data (Scale 1: 50000)
Digitally Compiled and Printed at : REGIONAL GEOMATIC CENTER, BILASPUR	

निर्यात के लिये नहीं  
NOT FOR EXPORT

Disclaimer: - The Map provided is subject to inherent discrepancy amongst layers associated with incompatibility between different platforms of reference (L.C.C., W.G.S. 84 etc.) and probable human error angle in digitization. The user agency is advised to use the feature of map subject to prior authentication & supervision by the authorized person of the concerned forest division. The GEOMATIC CENTER BILASPUR shall not be responsible for any complications (legal or otherwise), arising out of this map.

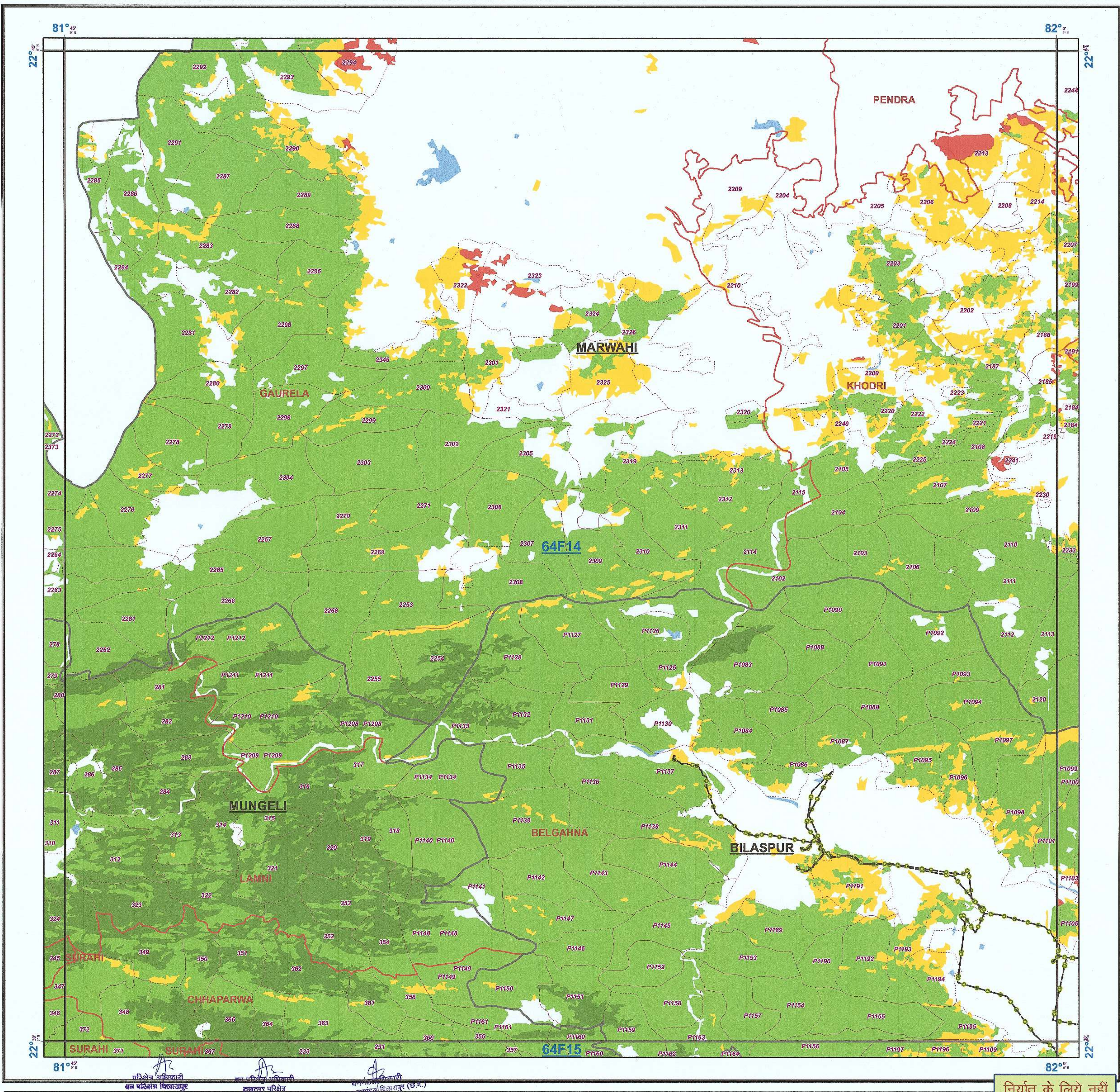


# FOREST COVER MAP

(OF PROPOSED FOREST/REVENUE LAND DIVERSION TO LAY OPTICAL FIBER IN VILLAGES OF BILASPUR DIVISION FOR BHARATNET PROJECT PHASE - II)

TOPOSHEET NO. 64-F 14

SCALE - 1:50,000



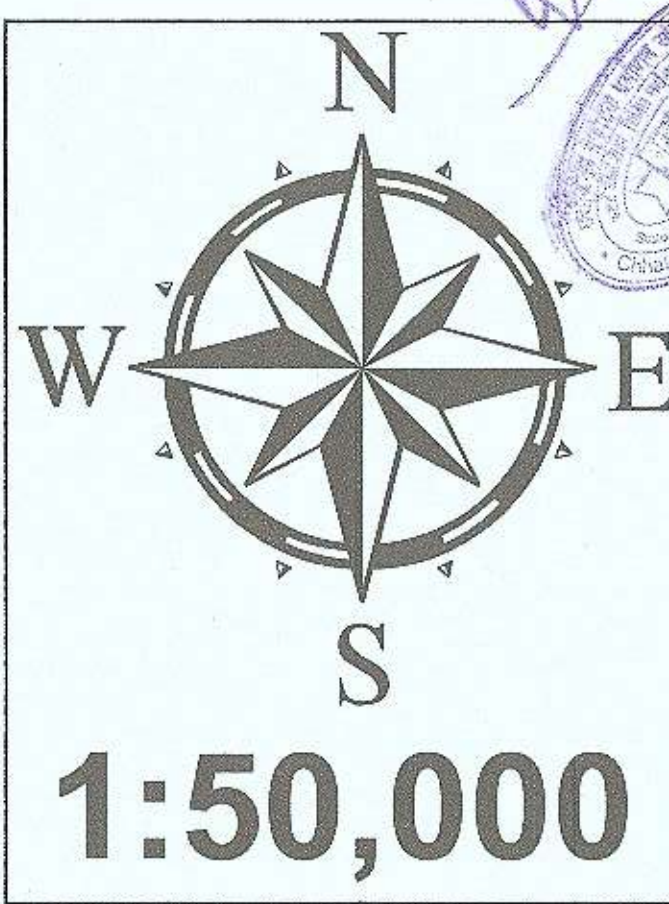
## Legend

- Bilaspur\_LINE
- Division\_Boundary
- Range\_Boundary
- Compartment\_Boundary
- Vegetation**
  - Moderately Dense Forest
  - Non-Forest
  - Open Forest
  - Scrub
  - Very Dense Forest
  - Water

## MAP PREPARED FOR C.H.I.P.S., RAIPUR (C.G.)

### TOPOSHEET INDEX

64F9	64F13	64J1
64F10	64F14	64J2
64F11	64F15	64J3



### NOTE:-

\* Forest Cover based on Digital Interpretation of Data Period 2017  
IRS P6-LISS-III 23.5 m, IRS-Resourcesat 2 FSI Report 2015. □

REG NO:

**MAP SUBJECT:**  
FOREST COVER MAP OF PROPOSED FOREST/REVENUE FOREST LAND PATCH OF 6.897ha, TO BE DIVERTED TO LAY OPTICAL FIBER CABLE IN SELECTED VILLAGES OF BILASPUR DIVISION FOR BHARATNET PROJECT PHASE - II, IN FAVOR OF CHHATTISGARH INFOTECH PROMOTION SOCIETY (CHIPS) RAIPUR (C.G.)

### SHAPEFILE PROVIDED BY USER AGENCY

SCALE 1:50,000	CoOrdinates/Projection System used :
Prepared by RGC, Raipur (C.G.)	COORDINATE SYSTEM OF SHAPEFILE: Geographic Coordinate System: GCS_WGS_1984 Datum: D_WGS_1984 Prime Meridian: Greenwich Angular Unit: Degree
Stock Mapping by	
Data Source (s) :	1. Forest Boundaries are based on Stock Map (Scale 1: 15000) 2. Natural Features are based on Digital SOI Data (Scale 1: 50000)
Digitally Compiled and Printed at : REGIONAL GEOMATIC CENTER, BILASPUR	

निर्यात के लिये नहीं  
NOT FOR EXPORT

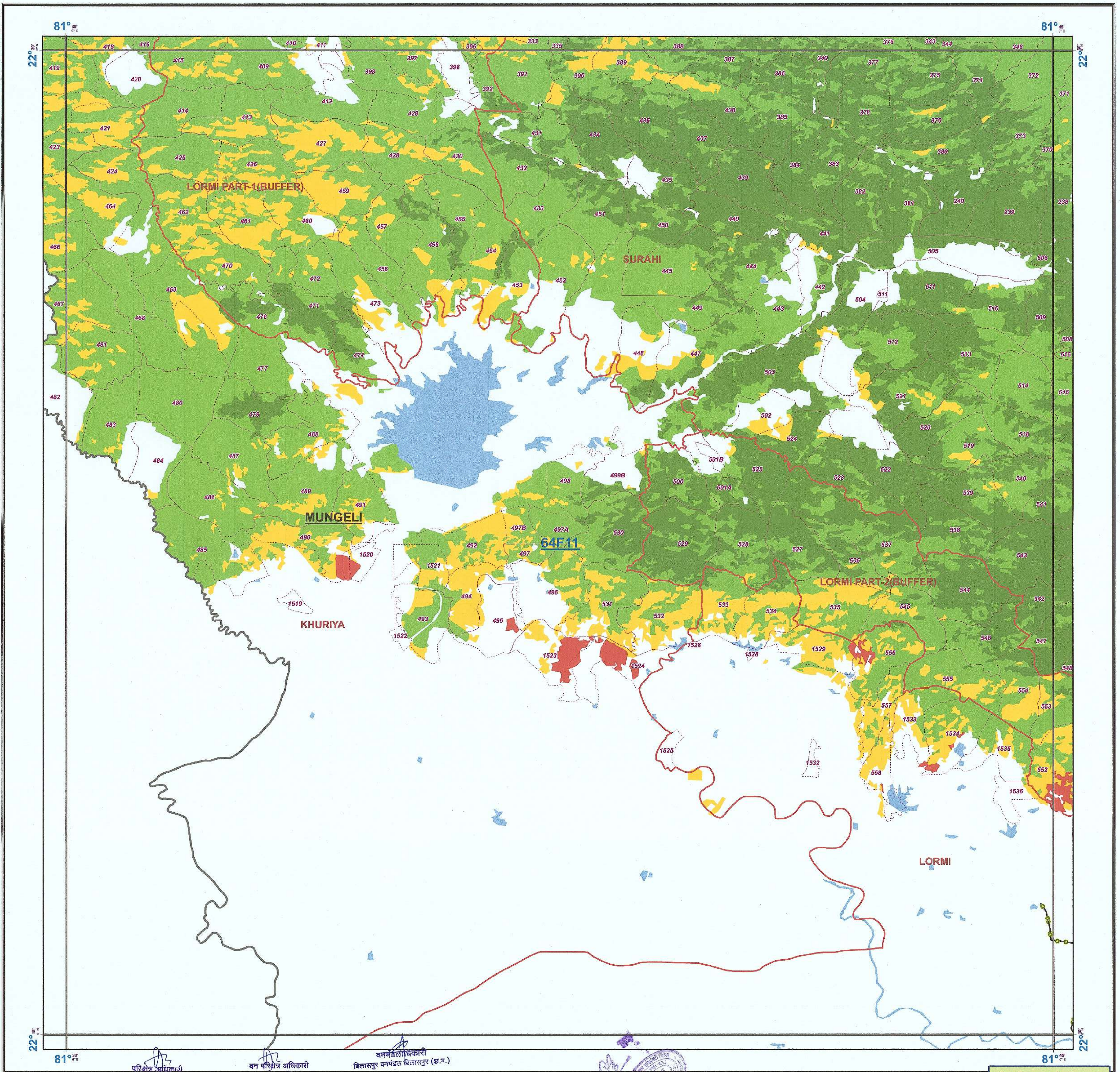


# FOREST COVER MAP

(OF PROPOSED FOREST/REVENUE LAND DIVERSION TO LAY OPTICAL FIBER IN VILLAGES OF BILASPUR DIVISION FOR BHARATNET PROJECT PHASE - II)

TOPOSHEET NO. 64-F 11

SCALE - 1:50,000



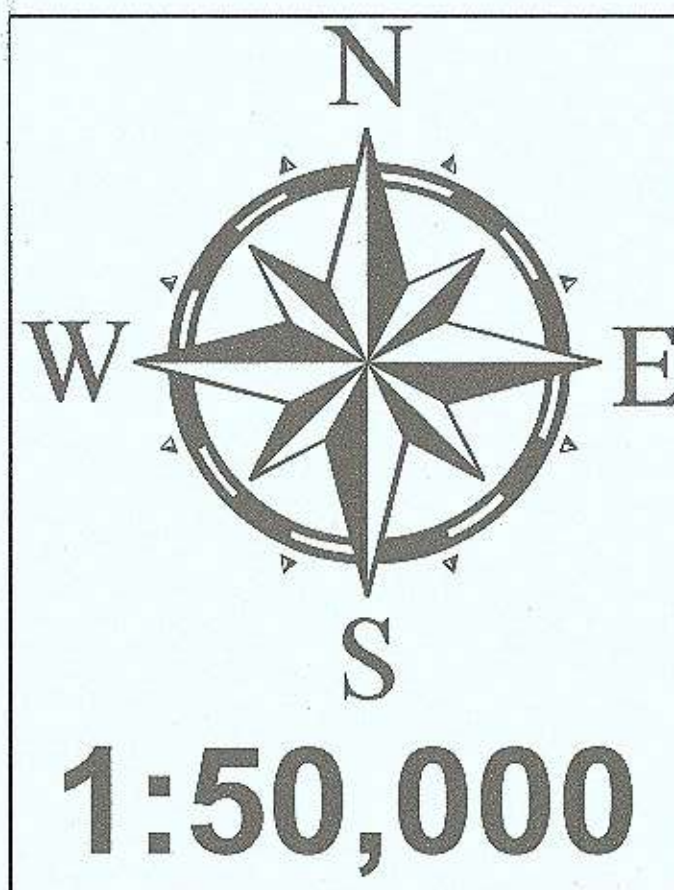
## Legend

- Bilaspur\_LINE
- Division\_Boundary
- Range\_Boundary
- Compartment\_Boundary
- Vegetation**
  - Moderately Dense Forest
  - Non-Forest
  - Open Forest
  - Scrub
  - Very Dense Forest
  - Water

## MAP PREPARED FOR C.H.I.P.S., RAIPUR (C.G.)

### TOPOSHEET INDEX

64F6	64F10	64F14
64F7	64F11	64F15
64F8	64F12	64F16



### NOTE:-

\* Forest Cover based on Digital Interpretation of Data Period 2017  
IRS P6-LISS-III 23.5 m, IRS-Resourcesat 2 FSI Report 2015. □

REG NO:

MAP SUBJECT:  
FOREST COVER MAP OF PROPOSED FOREST/REVENUE FOREST LAND PATCH OF 6.897ha, TO BE DIVERTED TO LAY OPTICAL FIBER CABLE IN SELECTED VILLAGES OF BILASPUR DIVISION FOR BHARATNET PROJECT PHASE - II, IN FAVOR OF CHHATTISGARH INFOTECH PROMOTION SOCIETY (CHIPS) RAIPUR (C.G.)

### SHAPEFILE PROVIDED BY USER AGENCY

SCALE 1:50,000	CoOrdinates/Projection System used :
Prepared by RGC, Bilaspur (C.G.)	COORDINATE SYSTEM OF SHAPEFILE: Geographic Coordinate System: GCS_WGS_1984 Datum: D_WGS_1984 Prime Meridian: Greenwich Angular Unit: Degree
Stock Mapping by	
Data Source (s) :	1. Forest Boundaries are based on Stock Map (Scale 1: 15000) 2. Natural Features are based on Digital SOI Data (Scale 1: 50000)
Digitally Compiled and Printed at : REGIONAL GEOMATIC CENTER, BILASPUR	

निर्यात के लिये नहीं  
NOT FOR EXPORT

Disclaimer: - The Map provided is subject to inherent discrepancy amongst layers associated with incompatibility between different platforms of reference (L.C.C., W.G.S. 84 etc.) and probable human error angle in digitization. The user agency is advised to use the feature of map subject to prior authentication & supervision by the authorized person of the concerned forest division. The GEOMATIC CENTER BILASPUR shall not be responsible for any complications (legal or otherwise), arising out of this map.