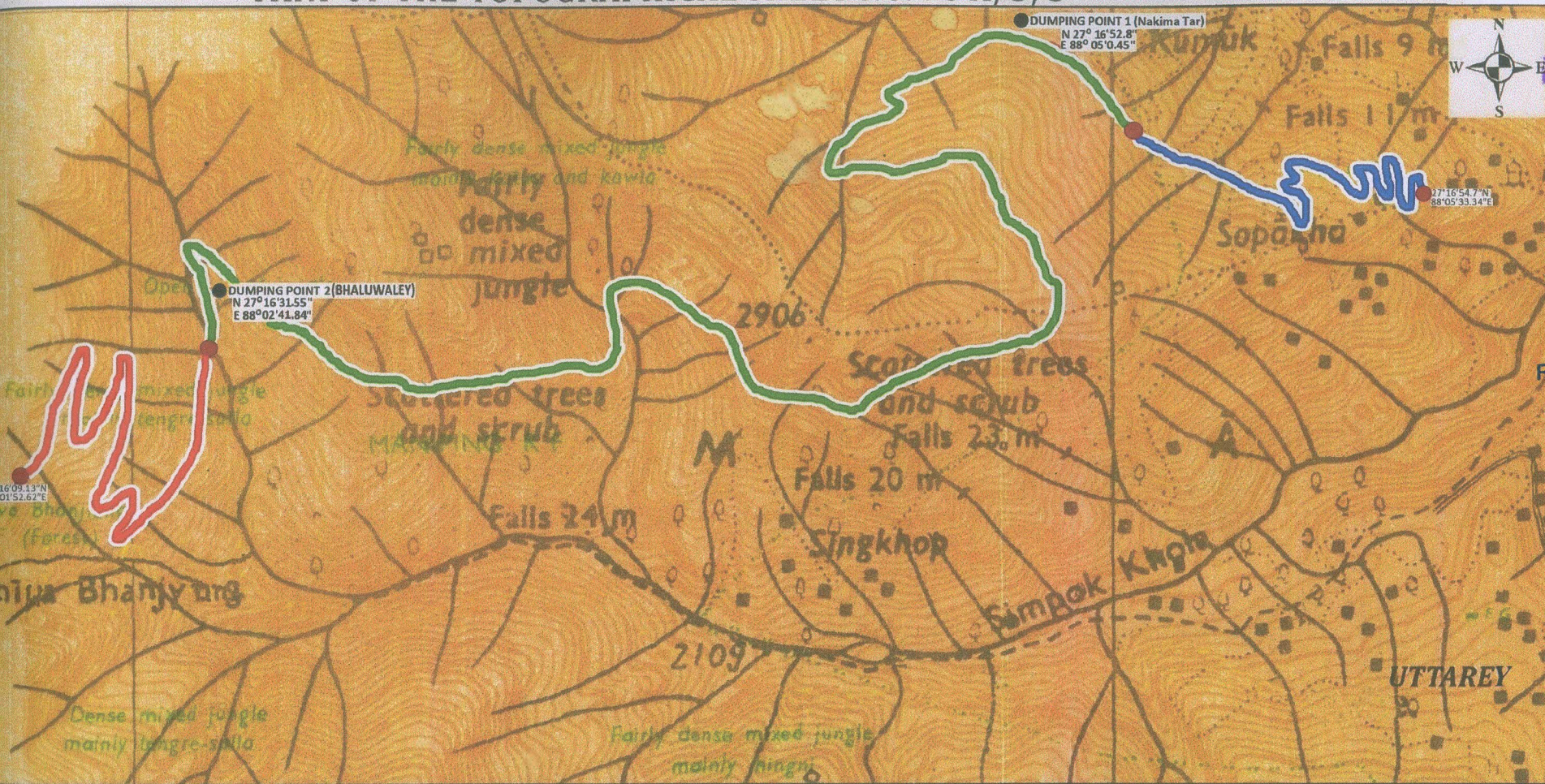


**TOPO SHEET SHOWING ROAD ALIGNMENT FOR THE PROJECT "CONSTRUCTION OF ROAD FROM SOPAKHA TO CHI WABHANJYANG VIA JORBOTAY IN WEST SIKKIM"**  
**PART OF THE TOPOGRAPHICAL SHEET NO. 78 A/3/3**



Sl.No	Particular	Area in Km	Area in ha.	Texture
1	Private Land	5.42 km.	8.94 ha.	
2	Wildlife Sanctuary	5.82 km.	9.58 ha.	
3	Reserved Forest	8.63 km.	14.24 ha.	
4	Reserved Forest :-			
	(i) Muck Dumping site 1	—	1 ha.	
	(ii) Muck Dumping site 2	—	1 ha.	
<b>TOTAL FOREST LAND INVOLVED</b>			<b>25.82 ha.</b>	

*Lalit Kr. B. D.*  
**NO (T) Denta**  
**EDWARD**

*T. P. B.*  
**ALI (H)**  
**GYALSHING**

*[Signature]*  
 Junior Engineer  
 Roads & Bridges Deptt.  
 Kaluk Sub-Division

*[Signature]*  
 Assistant En  
 Roads & Bridg  
 Kaluk Sub-D

*[Signature]*  
 Divisional Engineer - I  
 Roads & Bridges Department  
 Tikiuk Gyalshing, West Sikkim.

*[Signature]*  
**D. F. O.**  
**WES**

*[Signature]*  
 Range Officer-cu  
 Barsey Rhododendron Sanctuary  
 West Sikkim

*[Signature]*  
 Divisional Forest Officer  
 Wildlife West Division