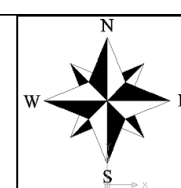


HARRAI BIJOURI ROAD DIVISION EAST CHINDWARA TOPOSHEET MAP-1

CHHINDWĀRA AND
NARSIMHAPUR DISTRICTS.

Surveyed 1972-73

MADHYA PRADESH

FIRST EDITION

Magnetic Variation from True North about 1° West in 1970.
(Decreasing by about 1° annually).

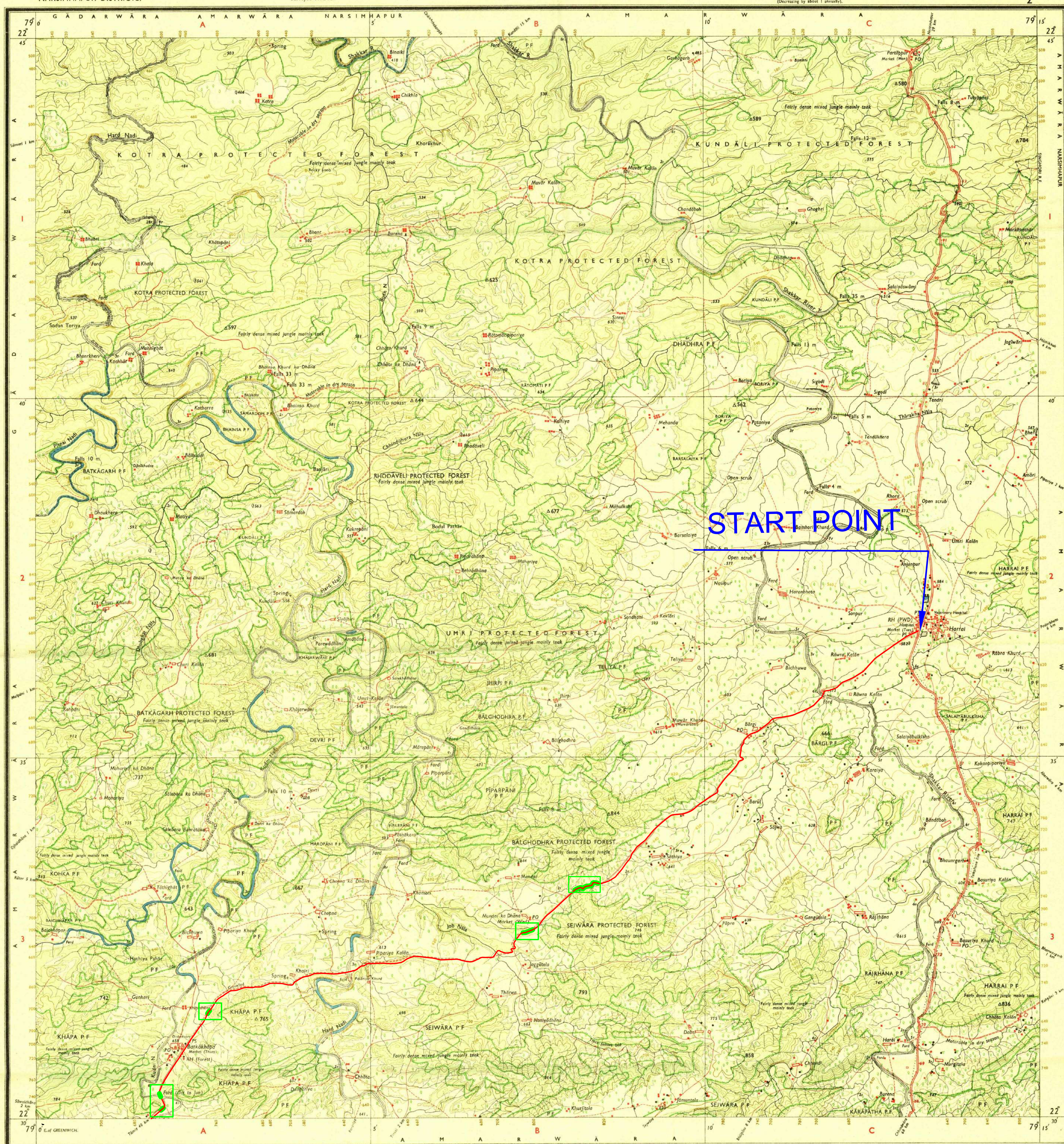
No. 55 $\frac{N}{2}$

| | |
|------------------------|---------------------------|
| REFER TO THIS MAP AS:- | INDIA |
| SHEET 55 N/2 | 1:50,000 FIRST EDITION |

INDIA

1:50,000

1.36,000



START POINT

| LIC. No. 4254 PFO 76 (C.C. #1-13) 335-7-8205 88. | | 20 |
|---|--|----|
| Roads, metalled: according to passage distance | | |
| unmetalled do | | |
| Art-track: Pack-track and pass. Foot path with bridge | | |
| Bridges, with pier, without. Causeway: Ford or Ferry | | |
| Streams with bank in banked-out Canal. | | |
| Normal man-made river | | |
| River banks: sloping, steep 3 to 6 metres, over 6 metres | | |
| dry with water channel, with island & rocks. Thall 3 | | |
| Submerged rocks: Shoal, Swamp | | |
| Wells: hand-dug, well with Spring | | |
| Embankments: rock with Spillway, General dry | | |
| Roads: broad gauge double single with station under, concrete | | |
| other gauges do do with station under, do | | |
| Mineral line or tramway: Electric line: Cutting with tunnel | | |
| Contours with water level: Rocky slopes: Cuts | | |
| San features: (1) Zaid hills and dunes (2) Sand dunes | | |

| | | |
|-------------------|------------------|------------------|
| SS $\frac{1}{13}$ | SS $\frac{N}{1}$ | SS $\frac{N}{5}$ |
| SS $\frac{1}{14}$ | SS $\frac{N}{2}$ | SS $\frac{N}{6}$ |
| SS $\frac{1}{15}$ | SS $\frac{N}{3}$ | SS $\frac{N}{7}$ |

Published under the direction of Major-General K.L. Khosla, BSc., BE (Civil), FIS, FIE, FIGU, MASCE (U.S.A.), Surveyor-General of India, 1976.

1:50,000

HEIGHTS & CONTOURS IN METRES

*Water features are shown in blue where they generally contain water.
*Cultivated areas are coloured yellow.
The exterior boundaries of areas of Reserved or Protected Forests are shown by green ribands.

* Not applicable.

Administrative Index

CHHINDWĀRA

| Plotted on the 104-880/Panama/Guayra Survey by 1980 | | | |
|---|--------------------------------------|--------|--------|
| Towns or Villages: inhabited forest | | | |
| Hut(s): permanent, temporary | •• | •• | •• |
| Temple, Chakti, Church, Mosque, Jiggle, Tomb, Graves | | | |
| Lighthouse, Light(s), Buoy(s), Lighted or unlighted Anchorage | | | |
| Mine, Vial, Well, Cistern, Spring, Swamp, Marsh, Lake, Pond | • | • | • |
| Plains, palms, etc. | Platanos, Cofre, Bamboo, Other trees | | |
| Boundary, international | | | |
| state demarcated, undemarcated | | | |
| division, subnational, or Mestizo forest | | | |
| Boundary (rivers, stream, watershed, village, trijunction) | | | |
| Height, triangulated, station, peak, approximate | • 200 | • 200 | • 200 |
| Benchmark, geodetic, tertiary, canal | BM 633 | BM 633 | BM 633 |
| Post, office, lodge, office, Combined office, Police station | | | |
| Road(s), air, or trail(s) (road, air, or trail) | | | |
| Camp, house, Camp(s), ground, forest, reserved, protected | CM | CG | RF |
| Species names, administrative, locality or tribal | KIKRI | | NAG |

1st Edition 1976.
(Previous Edition on 1-inch scale: 1st 1929.)

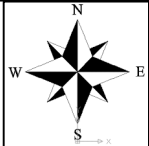
REFER TO THIS MAP AS :- 1:50,000
SHEET 55-N/2 FIRST EDITION


INDIA

© GOVERNMENT OF INDIA COPYRIGHT, 1976.
Price: Ten Rupees.

| LEGEND | |
|-------------------------|-------------|
| Proposed road | <div></div> |
| Division of Forest land | <div></div> |

HARRAI BIJOURI ROAD DIVISION EAST CHINDWARA TOPOSHEET MAP-2





सर्विस के लिए नहीं

NOT FOR EXPORT

OPEN SERIES

MAP

No. F44H3

Scale 1:50,000

F44G14

(55J14)

F44H2

(55N2)

F44H6

(55N6)

F44G15

(55J15)

F44H3

(55N3)

F44H7

(55N7)

F44G16

(55J16)

F44H4

(55N4)

F44H8

(55N8)

1 Series, MADHYA PRADESH.

भारतीय सर्वेक्षण विभाग

SURVEY OF INDIA

1st Edition 2010.

Price - Rs. 70/-

CONVENTIONAL SYMBOLS

Express highway with toll, with bridge, with distance stone

Roads, indicated according to importance

Roads, double carriageway according to importance

Unsurfaced road, Cart track, Path, track with stone, Path, track

Stream, with bank in bed, unfilled, Canal

Dam, masonry or rock fill, earthwork, Weir

River, dry with water channel with stone & hole, Tidal river

Submerged river, Canal, Stream, Drain

Valley, level, unfilled, Tube-well, Spring, Tanka, perennial, dry

Embankment, road or rail, bank, broken ground

Railway, broad gauge, double, single with station, under construction

Railway, other gauge, double, single with distance stone, etc.

Miscellaneous line or tramway, Kite, Cutting with tunnel

Contours with spot heights, Rocky slopes, Cliff

Small features (Pillar, Stone, Submerged, etc.) (Detailed)

Towers or villages, inhabited, deserted, Fort

Hill, permanent, temporary, Tower, Antenna, etc.

Tank, Cistern, Chalk, Mine, High, Tank, etc.

Light house, Lighthouse, Stone, light, unlighted, Andrange

Mine, Vite on traffic, Cross, Road

Forest, saltpetre, other, Plantation, Conifer, Bamboo, Other trees

Area, cultivated, wooded, Surveyed, etc.

Boundary, international

State, demarcated, undemarcated

Boundary, pillar, surveyed, unsurveyed

Height, trigonometric, station point, approximate

Bench mark, geodetic, tertiary, canal

Post office, Telegraph office, District office, etc.

Head house or inspection building, Civil house, Police station

Camping ground, Forest, reserved, protected

Special names, administrative, locality or tribal

Hospital, Dispensary, Veterinary Hospital, Dispensary

Aviation, airport, Transit site

Power line, with pylons, surveyed, with poles, unsurveyed

NOTES

Heights are in metres and above Indian mean sea level

Contours are approximate

A note height, e.g. 10, represents the approximate height, in metres, between the top and bottom of a steep slope

COMPILED INDEX

A

A

Projection - UTM Datum - WGS 84

Magnetic Variation from True North about 1° West in 2005, (Continues to about 1° annually)

1:50,000

Scale 1:50,000

CONTOUR INTERVAL 20 METRES

For further details about this map, please contact

Director

Madhya Pradesh Geo-Spatial Data Centre

Survey of India

Survey Colony, Vijaynagar

Jabalpur

WEBSITE - www.surveyofindia.gov.in

Reproduction in whole or part by any means is prohibited without the written permission of Survey of India, the National Mapping Agency.

GOVERNMENT OF INDIA COPYRIGHT 2016.

NEIS No. : SPIS D10 (Madhya Pradesh, GDC 1.05.005)

सर्वेक्षण विभाग के द्वारा प्रकाशित

Published under the direction of Surveyor General of India

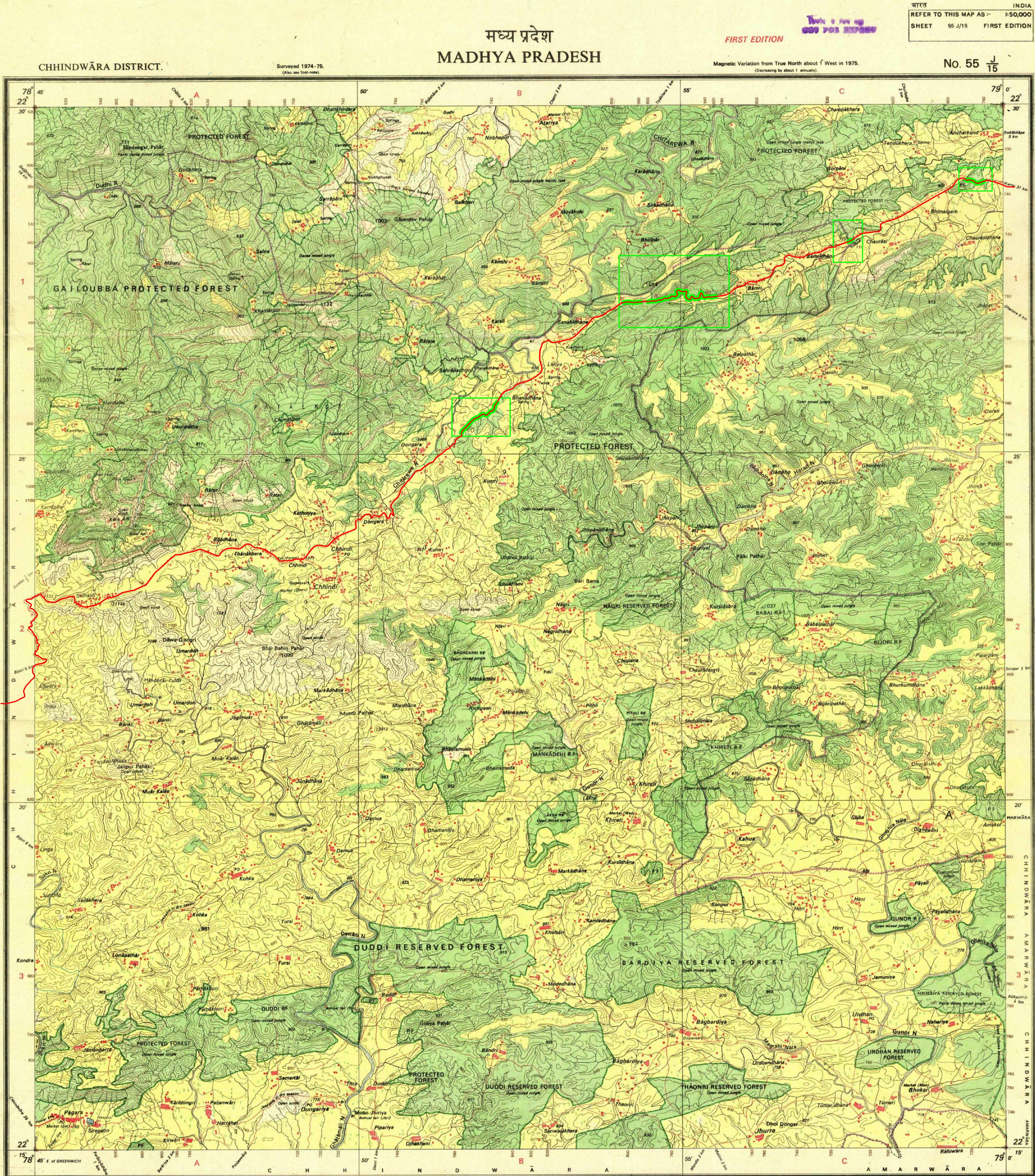
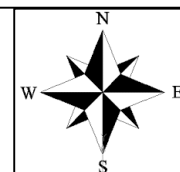
Survey of India, Harrai Bijouri Division, Plot No. 37, Dehra Doo-Doo (Uttarakhand)

Department of Science & Technology, Government of India.

PRINTED AT THE SOUTHERN PRINTING GROUP OF SURVEY OF INDIA

| LEGEND | |
|-------------------------|--|
| Proposed road | |
| Division of Forest land | |

HARRAI BIJOURI ROAD DIVISION EAST CHINDWARA TOPOSHEET MAP-3



Scale: 1:50,000

500 m to 1 cm

1 cm to 1 km

HEIGHTS & CONTOURS IN METRES

CONTOUR INTERVAL 20 METRES

Water features are shown in blue where they generally contain water. Cultivated areas are coloured yellow. The exterior boundaries of areas of Reserved or Protected Forests are shown by green ribbons.

Administrative Index


CHINDWARA

INDEX TO SHEETS

| | | |
|-------|-------|-------|
| 55 15 | 55 16 | 55 17 |
| 55 18 | 55 19 | 55 20 |
| 55 21 | 55 22 | 55 23 |

Legend

| | |
|-------------------------|--|
| Proposed road | |
| Division of Forest land | |

| LEGEND | |
|--------------------------|---|
| Proposed road |  |
| Diversion of Forest land |  |

HARRAI BIJOURI ROAD DIVISION WEST CHINDWARA TOPOSHEET MAP-4

