

(क) विभाग (क) विभाग (क) विभाग  
 (ख) विभाग (ख) विभाग (ख) विभाग  
 (ग) विभाग (ग) विभाग (ग) विभाग







Topo Sheet of Proposed 40.17 Hectare CA Land in Reserve Forest Block Baghaura, Gata No.- 15, 16, 17, 810/ 3, 817, 739, 470 & 228, Forest Division Baar, Against Diversion of Proposed Protected Forest Land for Construction of Choudhary Charan Singh Kavay Marg On RHS Side Shoulder of Upper Ganga Canal From Km Ch. 51.910 to Km Ch.108.750 in District-Muzaffar Nagar, Km Ch.108.750 to Km Ch. 151.050 in District-Meerut, and Km Ch. 151.050 to Km Ch.163.40 in Ghaziabad District, (Total Length 111.49 Km) in Uttar Pradesh



OPEN SERIES MAP  
No. G44S9  
Scale 1:50,000

G44M8 (54K/8)	G44M12 (54K/12)	G44M16 (54K/16)
G44S5 (54L/5)	G44S9 (54L/9)	G44S13 (54L/13)
G44S6 (54L/6)	G44S10 (54L/10)	G44S14 (54L/14)

1 Shivpuri, MADHYA PRADESH.  
2 Deoria, MADHYA PRADESH.  
3 Jhansi, UTTAR PRADESH.  
4 Ashoknagar, MADHYA PRADESH.

भारतीय सर्वेक्षण विभाग  
SURVEY OF INDIA

1st Edition 2011.

Price : Rs. 70/-

CONVENTIONAL SYMBOLS

Express highway with toll, with bridge with distance stone	
Roads metalled according to importance	
Roads, double cartway, according to importance	
Unmetalled road, Cart-track, Pack-track with pass, Foot-path	
Stream, with track in bed, underlaid, Canal	
Ditch, masonry or rock filled, outflow, Well	
River, dry with water channel, with island & rocks, Tidal river	
Submerged rocks, Shoal, Swamp, Reeds	
Wells, lined, unlined, Tube-well, Spring, Tank, perennial, dry	
Embankment, road or rail, tank, Broken ground	
Railways, broad gauge, double, single with station, under construction	
Railways, other gauges, double, single with station, under construction	
Mineral line or tramway, trolley, Cattle with line	
Contours with sub-contours, Rocky slopes, Cliffs	
Sand features (1 Flat, (2 Sand Hills, (3 Sand dunes, (4 Sand shifting)	
Towns or Villages, inhabited, deserted, Fort	
Huts, permanent, temporary, Tower, Antiquities	
Temple, Chhatra, Church, Mosque, Ghat, Tomb, Graves	
Lighthouse, Lightship, Buoy, lighted, unlighted, Anchorage	
Mine, Veta or track, Glass, Road	
Palms, papyrus, other, Harder, Conifer, Bamboo, Other trees	
Areas, cultivated, wooded, Surveyed tree	
Boundary, international	
State, demarcated, undemarcated	
District, subdivision, taluk or block, forest	
Boundary pillars, surveyed, uncoloured	
Height, Measured, station point, approximate	
Benchmark, geodetic, levelling, aneroid	
Post office, Telegraph office, Overhead tank	
Rest house or inspection bungalow, Circuit house, Police station	
Camping ground, Forest, reserved, protected	
Spoken names, administrative, locality or tribal	
Hospital, Dispensary, Veterinary, Hospital / Dispensary	
Aerodrome, heliport, Tourist site	
Power line, with pylons surveyed, with poles unsurveyed	

NOTES:-

Heights are in metres and above Indian mean sea level.  
Contours are approximate.  
A relative height, e.g., 10, represents the approximate height, in metres, between the top and bottom of a hill or slope.  
Wells are numerous throughout the sheet; only the important ones have been shown.  
The kilometre stone numbers along the railway and roads are shown in solid type, e.g., 10, if whereas milestone numbers are shown in upright type, e.g., 10.  
A relative height, e.g., 10, marked along a contour indicates the height of the top of the contour indicated above the adjacent country.  
Perennial streams in this sheet generally fordable from October to June at the places indicated as such.  
Tanks, shown dry in this sheet, usually contain water from July to December.  
Unmetalled roads and cart-roads in this sheet are generally motorable in dry season. Permission to use these along canals is required from the irrigation authorities.

COMPILATION INDEX

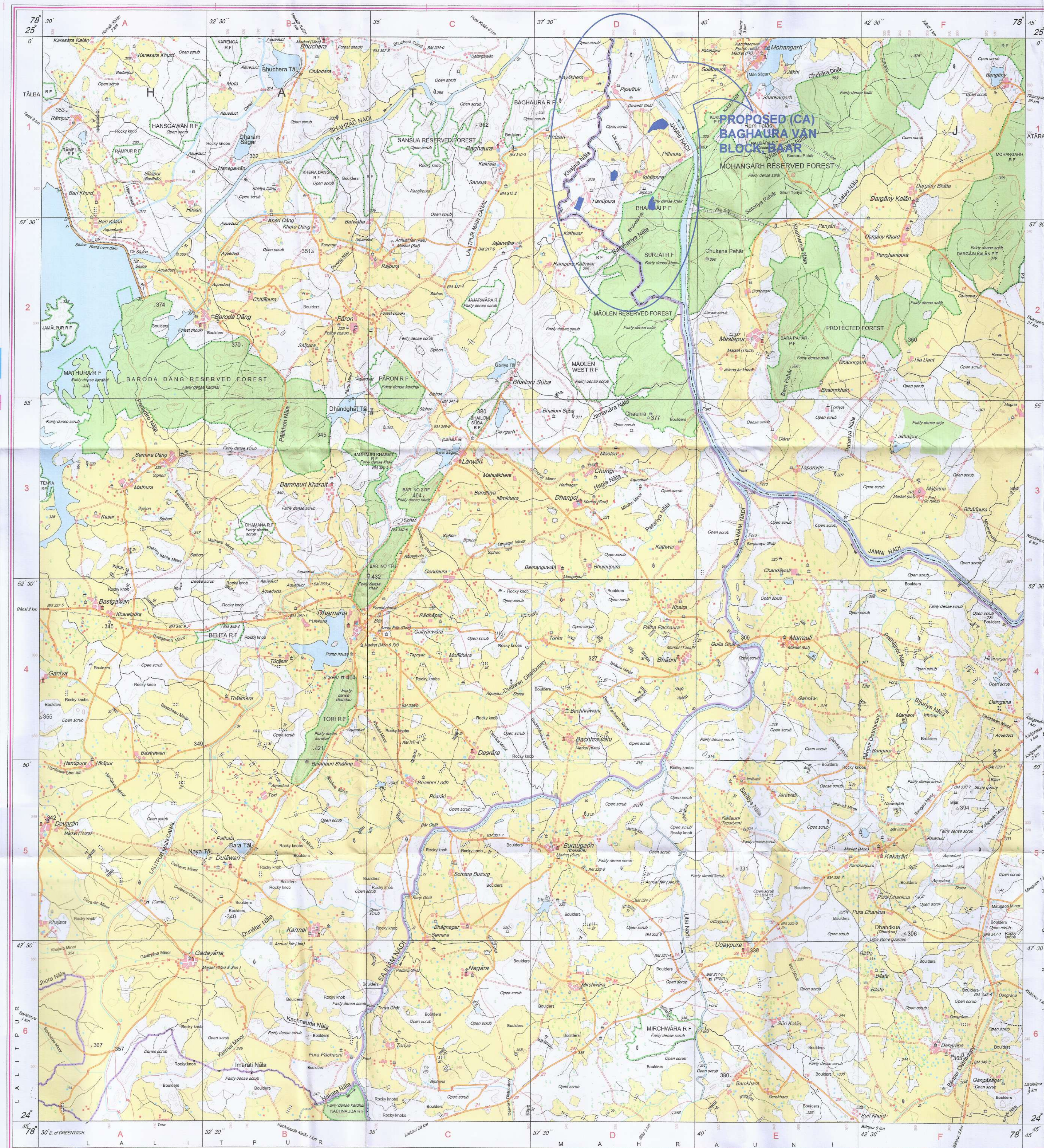
A	Surveyed during 1953-54. Updated for major details during 2005-06 and administrative boundaries updated during 2007-08.
---	---

Projection - UTM Datum - WGS 84  
Magnetic Variation from True North about 1° West in 2005.  
(Decreasing by about 1° annually).  
1:50,000  
500 m to 1 cm  
Metres 1000 500 0 1 2 Kilometres  
CONTOUR INTERVAL: 10 METRES

For further details about this map, please contact  
Director  
East Uttar Pradesh Geo-Spatial Data Centre  
Survey of India  
B-2 Block, 2nd Floor, PICUP Bhawan, Gomti Nagar, Lucknow.

WEBSITE - www.surveyofindia.gov.in  
Reproduction in whole or part by any means is prohibited  
without the written permission of Survey of India, the  
National Mapping Agency.

GOVERNMENT OF INDIA COPYRIGHT, 2011



REG. No. - WPG D11 (East Uttar Pradesh) GDC-1:50,000

LEGEND:-

PROPOSED (CA) BAGHAURA VAN BLOCK, BAAR

भारत के नक्शाबंदी, सर्वेक्षण विभाग, भारत, के नियमों के अनुसार,  
Published under the direction of Survey of India, B.E., Surveyor General of India,  
Survey of India, Haldibari Estate, Post Box No. 37, Dehra Dun-248001 (Uttarakhand)  
Department of Science & Technology, Government of India.

PRINTED AT THE WESTERN PRINTING GROUP OF SURVEY OF INDIA

अविशारी अभियंता  
प्राचीन खण्ड लोडिंग/डि.  
मेरठ

प्रधानीय अधिकारी  
प्रशासनिक वित्तिकी प्रभाग  
लखनऊ

1/2/2012  
(कृपया पेटल)  
प्रशासनिक वित्तिकी प्रभाग  
मुजफ्फरनगर



Topo Sheet of Proposed 122.940 Hectare CA Land in Reserve Forest Block Dhojri, Gata No.- 26, 27 & 302/2, Forest Division Lalitpur, Against Diversion of Proposed Protected Forest Land For Construction of Choudhary Charan Singh Kavad Marg On RHS Side Shoulder of Upper Ganga Canal From Km Ch. 51.910 to Km Ch.108.750 in District-Muzaffar Nagar, Km Ch.108.750 to Km Ch. 151.050 in District-Meerut, and Km Ch. 151.050 to Km Ch.163.40 in Ghaziabad District, (Total Length 111.49 Km) in Uttar Pradesh



OPEN SERIES MAP

No. G44S7

Scale 1:50,000

G44S2 (54L/2)	G44S6 (54L/6)	G44S10 (54L/10)
Ashoknagar MADHYA PRADESH G44S3 (54L/3)	G44S7 (54L/7)	Lalitpur UTTAR PRADESH G44S11 (54L/11)
G44S4 (54L/4)	Sigar MADHYA PRADESH G44S8 (54L/8)	G44S12 (54L/12)

1 Tikamgarh, MADHYA PRADESH.  
2 Vidisha, MADHYA PRADESH.

भारतीय सर्वेक्षण विभाग SURVEY OF INDIA

1st Edition 2011.

Price : Rs. 70/-

CONVENTIONAL SYMBOLS

Express highway, with toll, with bridge, with distance stone	
Roads, material according to importance	
Roads, double carriageway according to importance	
Unsurfaced road, Cart-track, Pack-track with pass, Foot-path	
Streams with track in bed, undefined, Canal	
Dams, masonry or rock-filled, earthwork, Weir	
River, dry with water channel, with island & rocks, Tidal river	
Submerged rocks, Shoal, Swamp, Flats	
Water level, unford, Tug-of-war, Ferry, Tug-of-war, dry	
Entrenchments, road or rail, tank, Broken ground	
Railways, broad gauge, double, single with station, under construction	
Railways, other gauges, double, single with distance stone, do	
Mineral line or tramway, Kin, Cutting with tunnel	
Contours with sub-features, Rocky slopes, Cliffs	
Sand features (1) (2) (3) (4) (5) (6) (7) (8) (9) (10) (11) (12) (13) (14) (15) (16) (17) (18) (19) (20) (21) (22) (23) (24) (25) (26) (27) (28) (29) (30) (31) (32) (33) (34) (35) (36) (37) (38) (39) (40) (41) (42) (43) (44) (45) (46) (47) (48) (49) (50) (51) (52) (53) (54) (55) (56) (57) (58) (59) (60) (61) (62) (63) (64) (65) (66) (67) (68) (69) (70) (71) (72) (73) (74) (75) (76) (77) (78) (79) (80) (81) (82) (83) (84) (85) (86) (87) (88) (89) (90) (91) (92) (93) (94) (95) (96) (97) (98) (99) (100) (101) (102) (103) (104) (105) (106) (107) (108) (109) (110) (111) (112) (113) (114) (115) (116) (117) (118) (119) (120) (121) (122) (123) (124) (125) (126) (127) (128) (129) (130) (131) (132) (133) (134) (135) (136) (137) (138) (139) (140) (141) (142) (143) (144) (145) (146) (147) (148) (149) (150) (151) (152) (153) (154) (155) (156) (157) (158) (159) (160) (161) (162) (163) (164) (165) (166) (167) (168) (169) (170) (171) (172) (173) (174) (175) (176) (177) (178) (179) (180) (181) (182) (183) (184) (185) (186) (187) (188) (189) (190) (191) (192) (193) (194) (195) (196) (197) (198) (199) (200) (201) (202) (203) (204) (205) (206) (207) (208) (209) (210) (211) (212) (213) (214) (215) (216) (217) (218) (219) (220) (221) (222) (223) (224) (225) (226) (227) (228) (229) (230) (231) (232) (233) (234) (235) (236) (237) (238) (239) (240) (241) (242) (243) (244) (245) (246) (247) (248) (249) (250) (251) (252) (253) (254) (255) (256) (257) (258) (259) (260) (261) (262) (263) (264) (265) (266) (267) (268) (269) (270) (271) (272) (273) (274) (275) (276) (277) (278) (279) (280) (281) (282) (283) (284) (285) (286) (287) (288) (289) (290) (291) (292) (293) (294) (295) (296) (297) (298) (299) (300) (301) (302) (303) (304) (305) (306) (307) (308) (309) (310) (311) (312) (313) (314) (315) (316) (317) (318) (319) (320) (321) (322) (323) (324) (325) (326) (327) (328) (329) (330) (331) (332) (333) (334) (335) (336) (337) (338) (339) (340) (341) (342) (343) (344) (345) (346) (347) (348) (349) (350) (351) (352) (353) (354) (355) (356) (357) (358) (359) (360) (361) (362) (363) (364) (365) (366) (367) (368) (369) (370) (371) (372) (373) (374) (375) (376) (377) (378) (379) (380) (381) (382) (383) (384) (385) (386) (387) (388) (389) (390) (391) (392) (393) (394) (395) (396) (397) (398) (399) (400) (401) (402) (403) (404) (405) (406) (407) (408) (409) (410) (411) (412) (413) (414) (415) (416) (417) (418) (419) (420) (421) (422) (423) (424) (425) (426) (427) (428) (429) (430) (431) (432) (433) (434) (435) (436) (437) (438) (439) (440) (441) (442) (443) (444) (445) (446) (447) (448) (449) (450) (451) (452) (453) (454) (455) (456) (457) (458) (459) (460) (461) (462) (463) (464) (465) (466) (467) (468) (469) (470) (471) (472) (473) (474) (475) (476) (477) (478) (479) (480) (481) (482) (483) (484) (485) (486) (487) (488) (489) (490) (491) (492) (493) (494) (495) (496) (497) (498) (499) (500) (501) (502) (503) (504) (505) (506) (507) (508) (509) (510) (511) (512) (513) (514) (515) (516) (517) (518) (519) (520) (521) (522) (523) (524) (525) (526) (527) (528) (529) (530) (531) (532) (533) (534) (535) (536) (537) (538) (539) (540) (541) (542) (543) (544) (545) (546) (547) (548) (549) (550) (551) (552) (553) (554) (555) (556) (557) (558) (559) (560) (561) (562) (563) (564) (565) (566) (567) (568) (569) (570) (571) (572) (573) (574) (575) (576) (577) (578) (579) (580) (581) (582) (583) (584) (585) (586) (587) (588) (589) (590) (591) (592) (593) (594) (595) (596) (597) (598) (599) (600) (601) (602) (603) (604) (605) (606) (607) (608) (609) (610) (611) (612) (613) (614) (615) (616) (617) (618) (619) (620) (621) (622) (623) (624) (625) (626) (627) (628) (629) (630) (631) (632) (633) (634) (635) (636) (637) (638) (639) (640) (641) (642) (643) (644) (645) (646) (647) (648) (649) (650) (651) (652) (653) (654) (655) (656) (657) (658) (659) (660) (661) (662) (663) (664) (665) (666) (667) (668) (669) (670) (671) (672) (673) (674) (675) (676) (677) (678) (679) (680) (681) (682) (683) (684) (685) (686) (687) (688) (689) (690) (691) (692) (693) (694) (695) (696) (697) (698) (699) (700) (701) (702) (703) (704) (705) (706) (707) (708) (709) (710) (711) (712) (713) (714) (715) (716) (717) (718) (719) (720) (721) (722) (723) (724) (725) (726) (727) (728) (729) (730) (731) (732) (733) (734) (735) (736) (737) (738) (739) (740) (741) (742) (743) (744) (745) (746) (747) (748) (749) (750) (751) (752) (753) (754) (755) (756) (757) (758) (759) (760) (761) (762) (763) (764) (765) (766) (767) (768) (769) (770) (771) (772) (773) (774) (775) (776) (777) (778) (779) (780) (781) (782) (783) (784) (785) (786) (787) (788) (789) (790) (791) (792) (793) (794) (795) (796) (797) (798) (799) (800) (801) (802) (803) (804) (805) (806) (807) (808) (809) (810) (811) (812) (813) (814) (815) (816) (817) (818) (819) (820) (821) (822) (823) (824) (825) (826) (827) (828) (829) (830) (831) (832) (833) (834) (835) (836) (837) (838) (839) (840) (841) (842) (843) (844) (845) (846) (847) (848) (849) (850) (851) (852) (853) (854) (855) (856) (857) (858) (859) (860) (861) (862) (863) (864) (865) (866) (867) (868) (869) (870) (871) (872) (873) (874) (875) (876) (877) (878) (879) (880) (881) (882) (883) (884) (885) (886) (887) (888) (889) (890) (891) (892) (893) (894) (895) (896) (897) (898) (899) (900) (901) (902) (903) (904) (905) (906) (907) (908) (909) (910) (911) (912) (913) (914) (915) (916) (917) (918) (919) (920) (921) (922) (923) (924) (925) (926) (927) (928) (929) (930) (931) (932) (933) (934) (935) (936) (937) (938) (939) (940) (941) (942) (943) (944) (945) (946) (947) (948) (949) (950) (951) (952) (953) (954) (955) (956) (957) (958) (959) (960) (961) (962) (963) (964) (965) (966) (967) (968) (969) (970) (971) (972) (973) (974) (975) (976) (977) (978) (979) (980) (981) (982) (983) (984) (985) (986) (987) (988) (989) (990) (991) (992) (993) (994) (995) (996) (997) (998) (999) (1000) (1001) (1002) (1003) (1004) (1005) (1006) (1007) (1008) (1009) (1010) (1011) (1012) (1013) (1014) (1015) (1016) (1017) (1018) (1019) (1020) (1021) (1022) (1023) (1024) (1025) (1026) (1027) (1028) (1029) (1030) (1031) (1032) (1033) (1034) (1035) (1036) (1037) (1038) (1039) (1040) (1041) (1042) (1043) (1044) (1045) (1046) (1047) (1048) (1049) (1050) (1051) (1052) (1053) (1054) (1055) (1056) (1057) (1058) (1059) (1060) (1061) (1062) (1063) (1064) (1065) (1066) (1067) (1068) (1069) (1070) (1071) (1072) (1073) (1074) (1075) (1076) (1077) (1078) (1079) (1080) (1081) (1082) (1083) (1084) (1085) (1086) (1087) (1088) (1089) (1090) (1091) (1092) (1093) (1094) (1095) (1096) (1097) (1098) (1099) (1100) (1101) (1102) (1103) (1104) (1105) (1106) (1107) (1108) (1109) (1110) (1111) (1112) (1113) (1114) (1115) (1116) (1117) (1118) (1119) (1120) (1121) (1122) (1123) (1124) (1125) (1126) (1127) (1128) (1129) (1130) (1131) (1132) (1133) (1134) (1135) (1136) (1137) (1138) (1139) (1140) (1141) (1142) (1143) (1144) (1145) (1146) (1147) (1148) (1149) (1150) (1151) (1152) (1153) (1154) (1155) (1156) (1157) (1158) (1159) (1160) (1161) (1162) (1163) (1164) (1165) (1166) (1167) (1168) (1169) (1170) (1171) (1172) (1173) (1174) (1175) (1176) (1177) (1178) (1179) (1180) (1181) (1182) (1183) (1184) (1185) (1186) (1187) (1188) (1189) (1190) (1191) (1192) (1193) (1194) (1195) (1196) (1197) (1198) (1199) (1200) (1201) (1202) (1203) (1204) (1205) (1206) (1207) (1208) (1209) (1210) (1211) (1212) (1213) (1214) (1215) (1216) (1217) (1218) (1219) (1220) (1221) (1222) (1223) (1224) (1225) (1226) (1227) (1228) (1229) (1230) (1231) (1232) (1233) (1234) (1235) (1236) (1237) (1238) (1239) (1240) (1241) (1242) (1243) (1244) (1245) (1246) (1247) (1248) (1249) (1250) (1251) (1252) (1253) (1254) (1255) (1256) (1257) (1258) (1259) (1260) (1261) (1262) (1263) (1264) (1265) (1266) (1267) (1268) (1269) (1270) (1271) (1272) (1273) (1274) (1275) (1276) (1277) (1278) (1279) (1280) (1281) (1282) (1283) (1284) (1285) (1286) (1287) (1288) (1289) (1290) (1291) (1292) (1293) (1294) (1295) (1296) (1297) (1298) (1299) (1300) (1301) (1302) (1303) (1304) (1305) (1306) (1307) (1308) (1309) (1310) (1311) (1312) (1313) (1314) (1315) (1316) (1317) (1318) (1319) (1320) (1321) (1322) (1323) (1324) (1325) (1326) (1327) (1328) (1329) (1330) (1331) (1332) (1333) (1334) (1335) (1336) (1337) (1338) (1339) (1340) (1341) (1342) (1343) (1344) (1345) (1346) (1347) (1348) (1349) (1350) (1351) (1352) (1353) (1354) (1355) (1356) (1357) (1358) (1359) (1360) (1361) (1362) (1363) (1364) (1365) (1366) (1367) (1368) (1369) (1370) (1371) (1372) (1373) (1374) (1375) (1376) (1377) (1378) (1379) (1380) (1381) (1382) (1383) (1384) (1385) (1386) (1387) (1388) (1389) (1390) (1391) (1392) (1393) (1394) (1395) (1396) (1397) (1398) (1399) (1400) (1401) (1402) (1403) (1404) (1405) (1406) (1407) (1408) (1409) (1410) (1411) (1412) (1413) (1414) (1415) (1416) (1417) (1418) (1419) (1420) (1421) (1422) (1423) (1424) (1425) (1426) (1427) (1428) (1429) (1430) (1431) (1432) (1433) (1434) (1435) (1436) (1437) (1438) (1439) (1440) (1441) (1442) (1443) (1444) (1445) (1446) (1447) (1448) (1449) (1450) (1451) (1452) (1453) (1454) (1455) (1456) (1457) (1458) (1459) (1460) (1461) (1462) (1463) (1464) (1465) (1466) (1467) (1468) (1469) (1470) (1471) (1472) (1473) (1474) (1475) (1476) (1477) (1478) (1479) (1480) (1481) (1482) (1483) (1484) (1485) (1486) (1487) (1488) (1489) (1490) (1491) (1492) (1493) (1494) (1495) (1496) (1497) (1498) (1499) (1500) (1501) (1502) (1503) (1504) (1505) (1506) (1507) (1508) (1509) (1510) (1511) (1512) (1513) (1514) (1515) (1516) (1517) (1518) (1519) (1520) (1521) (1522) (1523) (1524) (1525) (1526) (1527) (1528) (1529) (1530) (1531) (1532) (1533) (1534) (1535) (1536) (1537) (1538) (1539) (1540) (1541) (1542) (1543) (1544) (1545) (1546) (1547) (1548) (1549) (1550) (1551) (1552) (1553) (1554) (1555) (1556) (1557) (1558) (1559) (1560) (1561) (1562) (1563) (1564) (1565) (1566) (1567) (1568) (1569) (1570) (1571) (1572) (1573) (1574) (1575) (1576) (1577) (1578) (1579) (1580) (1581) (1582) (1583) (1584) (1585) (1586) (1587) (1588) (1589) (1590) (1591) (1592) (1593) (1594) (1595) (1596) (1597) (1598) (1599) (1600) (1601) (1602) (1603) (1604) (1605) (1606) (1607) (1608) (1609) (1610) (1611) (1612) (1613) (1614) (1615) (1616) (1617) (1618) (1619) (1620) (1621) (1622) (1623) (1624) (1625) (1626) (1627) (1628) (1629) (1630) (1631) (1632) (1633) (1634) (1635) (1636) (1637) (1638) (1639) (1640) (1641) (1642) (1643) (1644) (1645) (1646) (1647) (1648) (1649) (1650) (1651) (1652) (1653) (1654) (1655) (1656) (1657) (1658) (1659) (1660) (1661) (1662) (1663) (1664) (1665) (1666) (1667) (1668) (1669) (1670) (1671) (1672) (1673) (1674) (1675) (1676) (1677) (1678) (1679) (1680) (1681) (1682) (1683) (1684) (1685) (1686) (1687) (1688) (1689) (1690) (1691) (1692) (1693) (1694) (1695) (1696) (1697) (1698) (1699) (1700) (1701) (1702) (1703) (1704) (1705) (1706) (1707) (1708) (1709) (1710) (1711) (1712) (1713) (1714) (1715) (1716) (1717) (1718) (1719) (1720) (1721) (1722) (1723) (1724) (1725) (1726) (1727) (1728) (1729) (1730) (1731) (1732) (1733) (1734) (1735) (1736) (1737) (1738) (1739) (1740) (1741) (1742) (1743) (1744) (1745) (1746) (1747) (1748) (1749) (1750) (1751) (1752) (1753) (1754) (1755) (1756) (1757) (1758) (1759) (1760) (1761) (1762) (1763) (1764) (1765) (1766) (1767) (1768) (1769) (1770) (1771) (1772) (1773) (1774) (1775) (1776) (1777) (1778) (1779) (1780) (1781) (1782) (1783) (1784) (1785) (1786) (1787) (1788) (1789) (1790) (1791) (1792) (1793) (1794) (1795) (1796) (1797) (1798) (1799) (1800) (1801) (1802) (1803) (1804) (1805) (1806) (1807) (1808) (1809) (1810) (1811) (1812) (1813) (1814) (1815) (1816) (1817) (1818) (1819) (1820) (1821) (1822) (1823) (1824) (1825) (1826) (1827) (1828) (1829) (1830) (1831) (1832) (1833) (1834) (1835) (1836) (1837) (1838) (1839) (1840) (1841) (1842) (1843) (1844) (1845) (1846) (1847) (1848) (1849) (1850) (1851) (1852) (1853) (1854) (1855) (1856) (1857) (1858) (1859) (1860) (1861) (1862) (1863) (1864) (1865) (1866) (1867) (1868) (1869) (1870) (1871) (1872) (1873) (1874) (1875) (1876) (1877) (1878) (1879) (1880) (1881) (1882) (1883) (1884) (1885) (1886) (1887) (1888) (1889) (1890) (1891) (1892) (1893) (1894) (1895) (1896) (1897) (1898) (1899) (1900) (1901) (1902) (1903) (1904) (1905) (1906) (1907) (1908) (1909) (1910) (1911) (1912) (1913) (1914) (1915) (1916) (1917) (1918) (1919) (1920) (1921) (1922) (1923) (1924) (1925) (1926) (1927) (1928) (1929) (1930) (1931) (1932) (1933) (1934) (1935) (1936) (1937) (1938) (1939) (1940) (1941) (1942) (1943) (1944) (1945) (1946) (1947) (1948) (1949) (1950) (1951) (1952) (1953) (1954) (1955) (1956) (1957) (1958) (1959) (1960) (1961) (1962) (1963) (1964) (1965) (1966) (1967) (1968) (1969) (1970) (1971) (1972) (1973) (1974) (1975) (1976) (1977) (1978) (1979) (1980) (1981) (1982) (1983) (1984) (1985) (1986) (1987) (1988) (1989) (1990) (1991) (1992) (1993) (1994) (1995) (1996) (1997) (1998) (1999) (2000) (2001) (2002) (2003) (2004) (2005) (2006) (2007) (2008) (2009) (2010) (2011) (2012) (2013) (2014) (2015) (2016) (2017) (2018) (2019) (2020) (2021) (2022) (2023) (2024) (2025) (2026) (2027) (2028) (2029) (2030) (2031) (2032) (2033) (2034) (2035) (2036) (2037) (2038) (2039) (2040) (2041) (2042) (2043) (2044) (2045) (2046) (2047) (2048) (2049) (2050) (2051) (2052) (2053) (2054) (2055) (2056) (2057) (2058) (2059) (2060) (2061) (2062) (2063) (2064) (2065) (2066) (2067) (2068) (2069) (2070) (2071) (2072) (2073) (2074) (2075) (2076) (2077) (2078) (2079) (2080) (2081) (2082) (2083) (2084) (2085) (2086) (2087) (2088) (2089) (2090) (2091) (2092) (2093) (2094) (2095) (2096) (2097) (2098) (2099) (2100) (2101) (2102) (2103) (2104) (2105) (2106) (2107) (2108) (2109) (2110) (2111) (2112) (2113) (2114) (2115) (2116) (2117) (2118) (2119) (2120) (2121) (2122) (2123) (2124) (2125) (2126) (2127) (2128) (2129) (2130) (2131) (2132) (2133) (2134) (2135) (2136) (2137) (2138) (2139) (2140) (2141) (2142) (2143) (2144) (2145) (2146) (2147) (2148) (2149) (2150) (2151) (2152) (2153) (2154) (2155) (2156) (2157) (2158)	



Topo Sheet of Proposed 50,440 Hectare CA Land in Reserve Forest Block Jakhlaun, Gata No.- 606/ 4, 532/ 1, 523 & 752 Mi, Forest Division Lalitpur, Against Diversion of Proposed Protected Forest Land For Construction of Choudhary Charan Singh Kavad Marg On RHS Side Shoulder of Upper Ganga Canal From Km Ch. 51.910 to Km Ch.108.750 in District-Muzaffar Nagar, Km Ch.108.750 to Km Ch. 151.050 in District-Meerut, and Km Ch. 151.050 to Km Ch.163.40 in Ghaziabad District, (Total Length 111.49 Km) in Uttar Pradesh

निर्वात के लिए नहीं NOT FOR EXPORT

OPEN SERIES MAP

No. G44S6

Scale 1:50,000

2 Shivpuri MADHYA PRADESH G44S1 (54L/4) G44S5 (54L/5) G44S9 (54L/9) 1 Ashok Nagar MADHYA PRADESH G44S2 (54L/2) G44S6 (54L/6) G44S10 (54L/10) 3 Vidisha MADHYA PRADESH G44S3 (54L/3) G44S7 (54L/7) G44S11 (54L/11) 4 Sagar MADHYA PRADESH

1 Tikamgarh, MADHYA PRADESH. 2 Ashoknagar, MADHYA PRADESH. 3 Vidisha, MADHYA PRADESH. 4 Sagar, MADHYA PRADESH.

भारतीय सर्वेक्षण विभाग SURVEY OF INDIA

1st Edition 2010. Price : Rs. 50/-

CONVENTIONAL SYMBOLS

Express highway with toll with bridge with distance stone. Roads, metalled, according to importance. Roads, double carriageway, according to importance. Unmetalled road. Cart-track. Pack-track with pass. Footpath. Streams with track in bed, undefined. Canal. Dams: masonry or rock-filled, earth-filled. Wall. River dry with water channel, with island & silt. Tidal river. Submerged rocks. Shoal. Swamp. Reeds. Wells: hand, unlined. Tube-well. Spring. Tanks: perennial, dry. Embankments: road or rail, tank. Broken ground. Railways, broad gauge, double, single with station; under construction. Railways, other gauges, double, single with distance stone, do. Mineral line or tramway. Kin. Cutting with tunnel. Contours with sub-features: Rocky slopes, cliffs. Sand features (Vine, Open hill, permanent) (Open hill, permanent). Towns or Villages: inhabited, deserted, Fort. Hubs: permanent, temporary, Tower, Anticline. Temple, Chhatra, Church, Mosque, Ghat, Tomb, Graves. Lighthouse, Lightship, Buoy: lighted, unlighted, Anchorage. Mine: Vine on trellis, Grass, Scrub. Palms: Palmyra, other, Plantain, Conifer, Bamboo, Other trees. Areas: cultivated, wooded, Surveyed line. Boundary: international. state, demarcated, undemarcated. district, subdivision, taluk or block, forest. Boundary pillars: surveyed, unlocated. Heights, triangulation station, point, approximate. Bench-mark: geodetic, tertiary, canal. Post office, Telegraph office, Overhead tank. Rest house or inspection bungalow, Guard house, Police station. Camping ground, Forest: reserved, protected. Spotted reserves, administrative, locality or tribal. Hospital, Dispensary, Veterinary Hospital / Dispensary. Aerodrome, Helipad, Tourist site. Power line: with pylons surveyed, with poles unsurveyed.

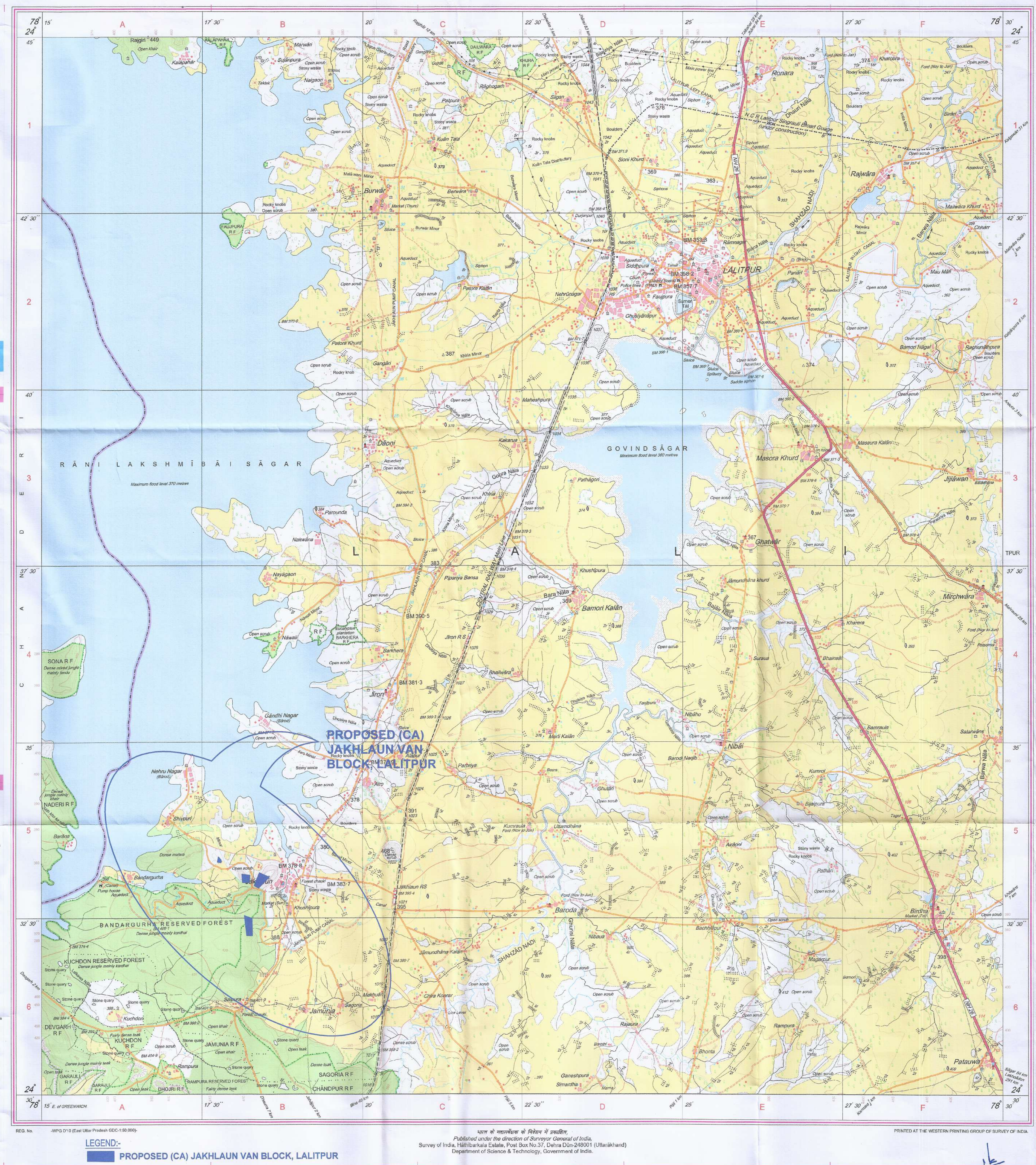
REFERENCE  
M:20 National Highway No. 26

NOTES  
Heights are in metres and above Indian mean sea level. Contours are approximate. A relative height, e.g., 20, represents the approximate height, in metres, between the top and bottom of a steep slope. The kilometre stone numbers along the railway, canal and roads are shown in slant type, e.g., 5, whereas milestone numbers are shown in upright type, e.g., 15. Unmetalled roads in the sheet are generally metalled in dry season. Permission to use roads and cart tracks inside the Reserved Forest and along canals is issued from the Forest and Irrigation authorities, respectively. Periodical streams in this sheet are fordable from October to June at the places indicated as such.

COMPILED INDEX  
A. Surveyed during 1953-54. Updated for major details during 2006-07 and administrative boundaries update during 2008-09.

Projection - UTM Datum - WGS 84  
Magnetic Variation from True North about 1° West in 2005. (Increasing by about 1" annually).  
1:50,000  
500 m to 1 cm  
2 cm to 1 km  
CONTOUR INTERVAL 10 METRES  
For further details about the map, please contact  
Director  
East Uttar Pradesh Geo-Spatial Data Centre  
Survey of India  
B-2 Block, 2nd Floor, PICUP Bhawan, Gomti Nagar, Lucknow.

WEBSITE - www.surveyofindia.gov.in  
Reproduction in whole or part by any means is prohibited without the written permission of Survey of India, the National Mapping Agency.  
GOVERNMENT OF INDIA COPYRIGHT, 2010.



प्रमाणित निदेशक  
सामाजिक वानिकी प्रभाग  
ललितपुर

(कहेन्द्र पटेल)  
प्रमाणित निदेशक  
सामाजिक वानिकी प्रभाग  
मुजफ्फरनगर

अधिसूची अभिलेखा  
प्रांतीय खण्ड रोडिंगविग,  
मेरठ