

Map showing Non Forest CA land to be taken over in sy.no:41 of Itikyal(v), Pembli (m) of Khanapaur Division in lieu of forest land proposed for Diversion for 1) Proposed B.T Road from Rayadhari to Pochampally (V) of Pembli (M), Nirmal Division & 2) B.T Road from Pandavapur to Damaguda (V) of Kadam (M), Khanapur Division in favor of TWED, Uttnoor

Area - 2.685 Ha

ITIKYAL RF

673

676

19°14'0"N

19°13'30"N

19°13'0"N

19°12'30"N

KHANAPUR

5r.

2.685 Ha

KADDAM RIVER

Ford

Ford

763

RAJURA RF 762

Name	Easting	Northing	Longitude	Latitude
BP1	251827.744	2127235.858	78.63942363	19.22344942
BP2	251851.934	2127104.578	78.63967052	19.22226695
BP3	251662.127	2127142.996	78.63786130	19.22259060
BP4	251560.762	2127179.095	78.63689308	19.22290413
BP5	251568.024	2127228.533	78.63695573	19.22335142
BP6	251669.890	2127237.308	78.63792291	19.22344316

0 250 500 1,000 Meters

Geographix: Coordinate Systems: WGS 84 Datum: (UTM Zone 48N)

Legend

- DGPS Surveyed Points
- Area Proposed for CA

78°38'0"E

78°38'30"E

Tagged to asuram SGI GCP

78°39'0"E

Forest Divisional Office, Khanapur

Forest Range Officer, PEMBLI

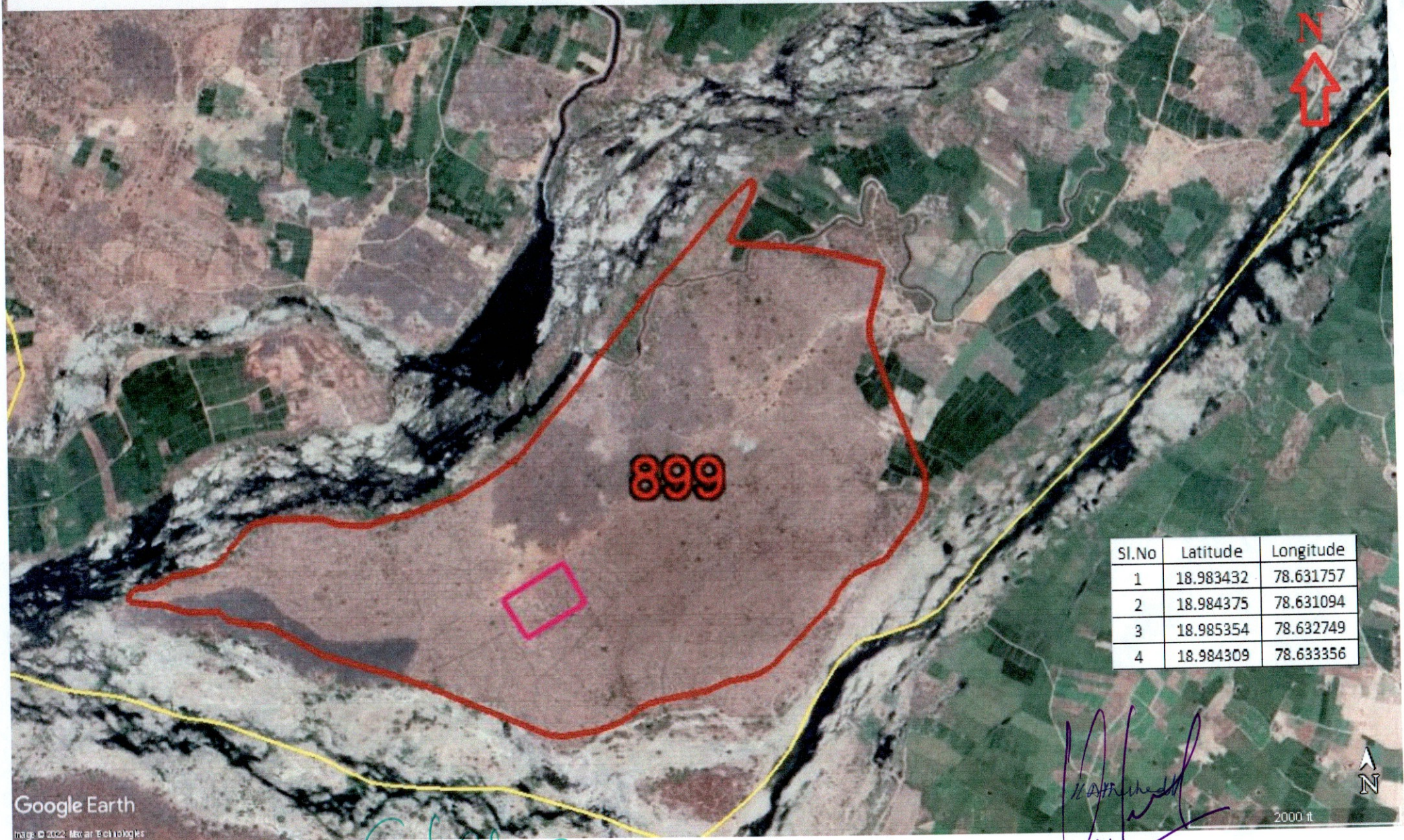
Executive Engineer, T.W.D, Uttnoor

Assistant Executive Engineer, T.W.S.D DANDEPALLY

Pembli Mandal

Location & Surveyed Sketch Map of Degarded Forest Land of 2.685 Ha. in Surjapur Beat of Khanapur Section of Khanapur Range

Legend



Google Earth

Image © 2022, Map data © 2022

FOREST RANGE OFFICER
KHANAPUR

Forest Divisional Officer
Khanapur

District Forest Officer
NIRMAL