

No. H4303  
Scale 1:50,000

H43P14 Fatehabad HARYANA	H43Q2 Jind HARYANA	Kaithal HARYANA H43Q6
H43P15 HARYANA	H43Q3 HARYANA	H43Q7 HARYANA
H43P16 1 Bhiwani, HARYANA.	H43Q4 HARYANA	H43Q8 3 Sonapat, HARYANA. 4 Sangur, PUNJAB.

भारतीय सर्वेक्षण विभाग  
SURVEY OF INDIA  
1st Edition 2007.  
Price : Rs. 50/-

CONVENTIONAL SYMBOLS



REFERENCE

AN 71 National Highway No. 71

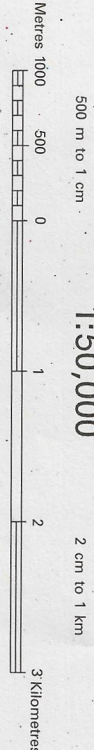
NOTES :-

Heights are in metres and above Indian mean sea level.  
Contours are approximate.  
Chain distance shown are 1000 feet apart and every existing fifth station is shown.  
Contours of a new station.  
Unsettled roads and cart-roads in this sheet are generally marked throughout the year. Permission to use those along canals is required from the Irrigation authorities.  
0.000 - Area re-occupied, shown of Balaia Dam - Project Survey with their numbers are shown as survey records since then N 123, BM 222.2  
Trees, shown dry, in this sheet, usually contain water from July to March.

COMPAILATION INDEX

A. Surveyed during 1888-89. Updated for major details during 2005-06.

Projection - UTM Datum - WGS 84  
Magnetic Variation from True North about  $\frac{3}{4}$  East in 2000.  
(increasing by about 2' annually)  
1:50,000

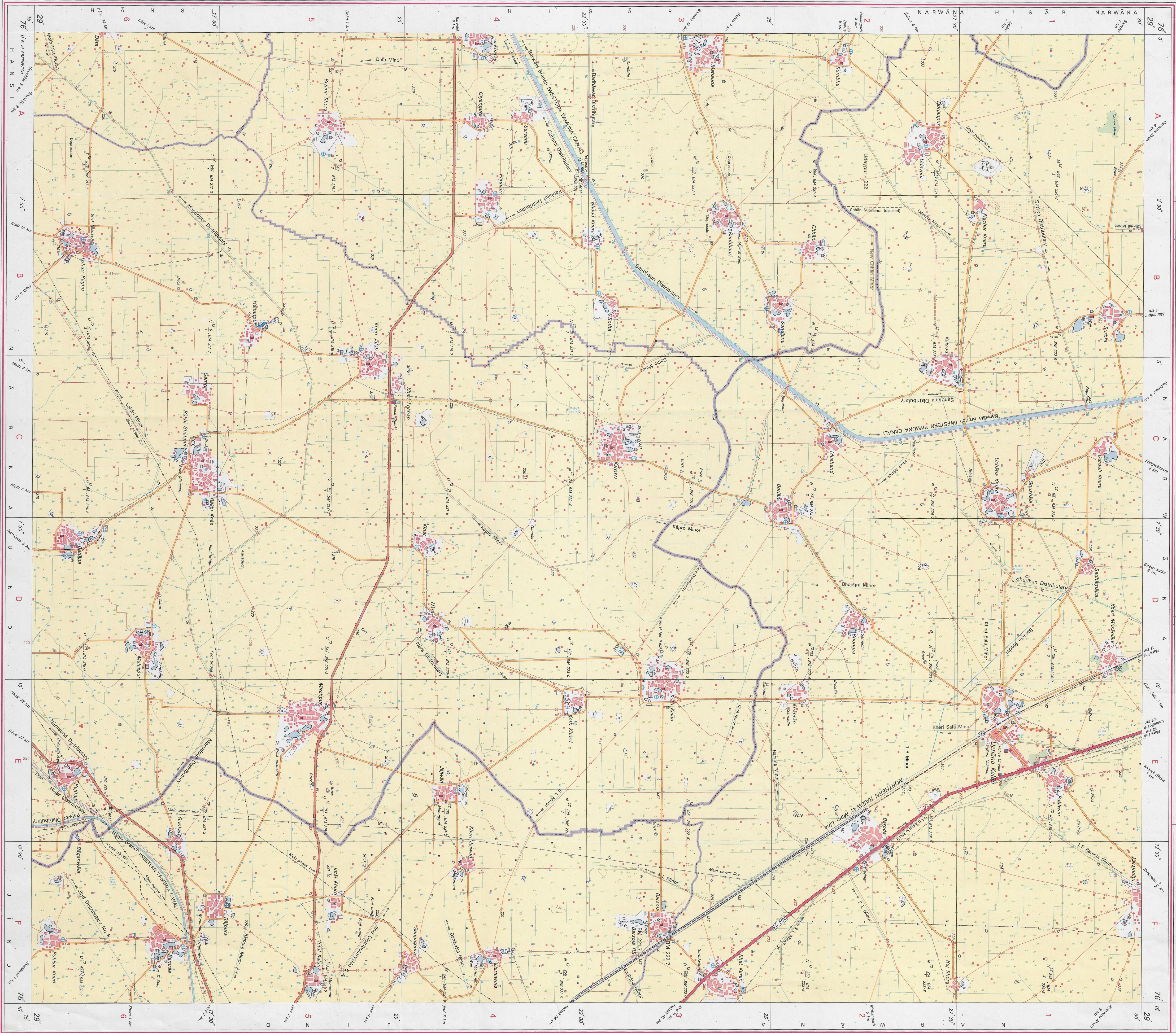


For further details about this map, please contact  
Director  
Haryana Geo-Spatial Data Centre  
Survey of India, Sector 32 A  
Chandigarh.  
Fax : 0172 - 2804671

WEBSITE - [www.surveyofindia.gov.in](http://www.surveyofindia.gov.in)

Reproduction in whole or part by any means is prohibited  
without the written permission of Survey of India, the  
National Mapping Agency.

GOVERNMENT OF INDIA, COPYRIGHT 2007.



REG. No. 13395-PG-D-V (Haryana GDS-150,000/1510)

यह नक्शा सर्वेक्षण विभाग द्वारा तैयार किया गया है, और इसे बिना किसी अनुमति के प्रकाशित नहीं किया जा सकता है।  
Published under the direction of the Director, Survey of India, Chandigarh.  
Department of Science & Technology, Government of India.

PRINTED AT THE SOUTHERN PRINTING GROUP OF SURVEY OF INDIA