

**OPEN SERIES MAP**

**No. G45T3**

Scale 1:50,000

Gayā BHĀR	G45S14 (72D/14)	G45T2 (72H/2)	G45T6 (72H/6)
	G45S15 (72D/15)	G45T3 (72H/3)	Kodama JĀRKHAND G45T7 (72H/7)
Chātrā JĀRKHAND	G45S16 (72D/16)	G45T4 (72H/4)	Hāzārībāg JĀRKHAND G45T8 (72H/8)

# 132 KV D/C ITKHORI TO CHATRA TRANSMISSION LINE (ALTERNATE ROUTE)

भारतीय सर्वेक्षण विभाग SURVEY OF INDIA

1st Edition 2010 Revised 2017 Price : Rs. 70/-

**CONVENTIONAL SYMBOLS**

Express highway with toll, with bridge, with distance stone	
Roads, metalled, according to importance	
Roads, disused, according to importance	
Unmetalled road, Cart track, Foot-track with wheel, Foot-path	
Streams with bank in bank, unconfined, Canal	
Dam, masonry or rock filled, work over	
River dry with water channel, with mud & rocks, Tidal river	
Submerged rocks, Shoal, Swamp, Reach	
White forest, unlined, Tidal-est, Spring, Tanks, perennial dry	
Embankments, road or rail, embankment, broken ground	
Railways, broad gauge, double, single with station, under constn.	
Railways, other gauges, double, single with distance stone, 06	
Mineral line or tramway, Rtn, Cutting with tunnel	
Contours with sea-level, Rocky slopes, Cliffs	
Sand heaves (T) (Bar (Z) (sand displacement), (Z) (sand shifting)	
Towns or villages, inhabited, deserted, Fort	
Hills, prominent, temporary, Tower, Antiquary	
Temples, Chhatra, Church, Mosque, Igloo, Tomb, Graves	
Lighthouse, Lightship, Buoy, lighted, unlighted, Anchorage	
Mine, Vm on reefs, Grass, Sand	
Palms, papyrus, other plants, Conifer, Bamboo, Other trees	
Asan, natural, wooded, Surveyed tree	
Boundary, international	
Water, demarcated, undemarcated	
District subdivision, quarter or block, fence	
Boundary pillars, surveyed, uncoloured	
Height, triangulation, station, point, approximate	
Bench-mark, geodetic, levelling, aneroid	
Post office, Telegraph office, Overhead tank	
Rail house or inspection longhouse, Guard house, Police station	
Camping ground, Forest, reserved, protected	
Spaced names, administrative, locality or tribal	
Hospital, Dispensary, Veterinary, Hospital / Dispensary	
Aerodrome, Helipad, Tourist site	
Power line, with pylons surveyed, with poles unsurveyed	

**REFERENCE**

MPZ National Highway No. 2

**NOTES**

Contours are represented by brown lines. Heights are in metres and above Indian mean sea level. A relative height of 100 represents the approximate height in metres between the top and bottom of a steep slope. The triangulation heights and contours in this sheet have not been adjusted to the height of the spirit-levelled bench marks and may not be exactly in accordance with them. The kilometre stone numbers along roads are shown in black type, e.g., '5' whereas milestone numbers are shown in red type, e.g., '5'. Cart tracks along canals are possible in dry season. Permission to use them is required from the irrigation authorities. Hatched and white areas throughout the outlined portions of this sheet, only the important ones have been shown. Collection is periodic and depends on rainfall.

**COMPILATION INDEX**

A. Surveyed during 1977-78. Updated for major details during 2005-06.

**Projection - UTM Datum - WGS 84**

Magnetic Variation from True North about 1° West in 2005. (Decreasing by about 1" annually)

Scale 1:50,000

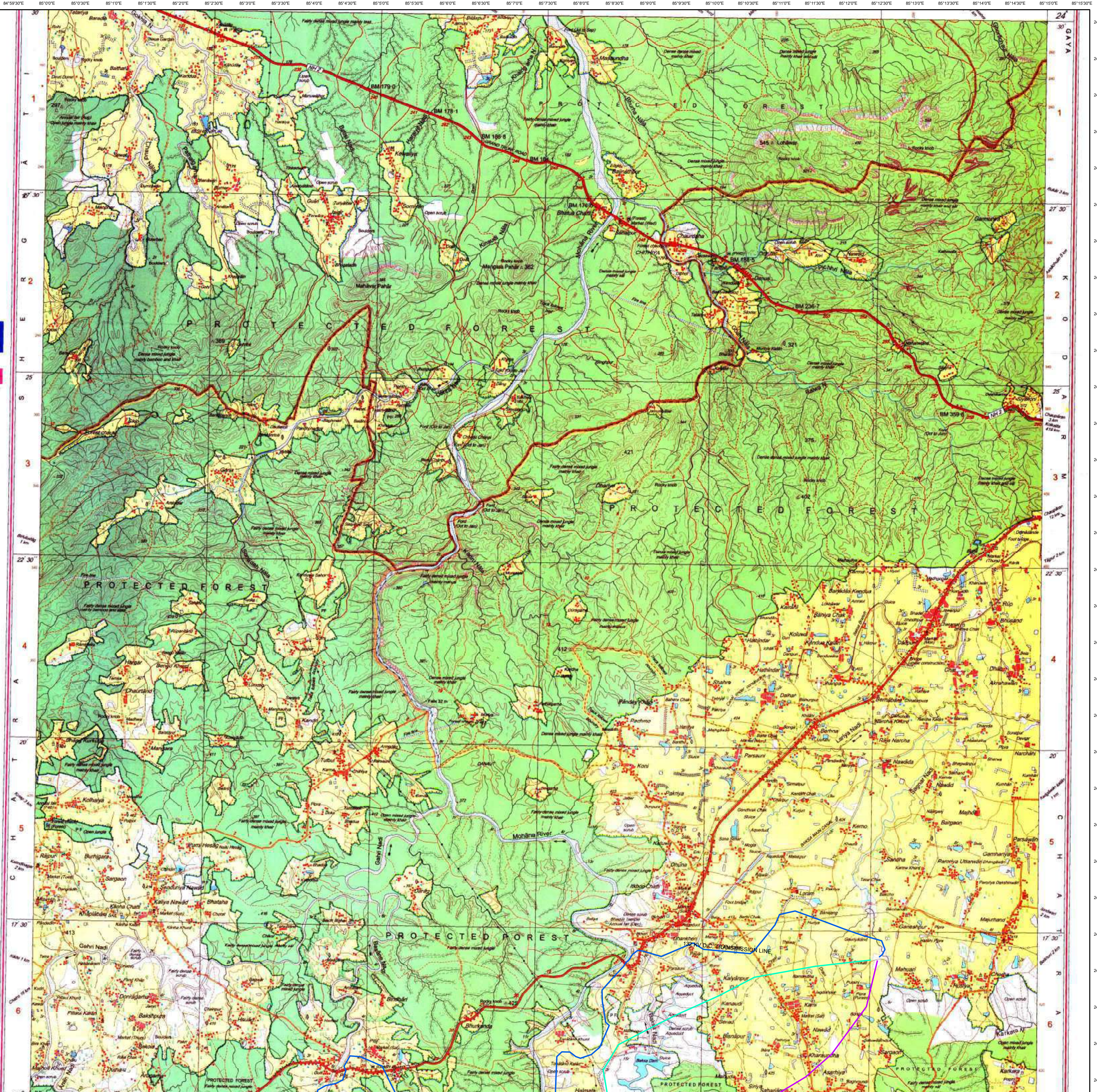
Scale bar: 0 to 2 km

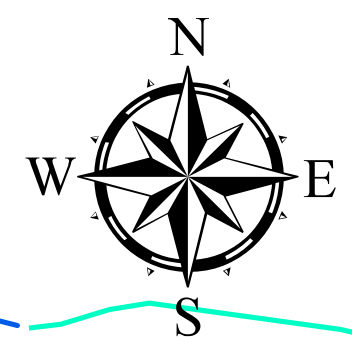
CONTOUR INTERVAL 20 METRES

**Legend**

- ROUTE\_2 (Red line)
- ROUTE\_3 (Green line)
- TRANSMISSION\_LINE (Blue line)

For further details about this map, please contact:  
 Director,  
 Bihar Geo-Spatial Data Centre,  
 Survey of India, 164, Sheikhpura House, Sheikhpura,  
 Patna - 800014.  
 Fax: 0612-2280265





1:50,000

निर्वात के लिए नहीं NOT FOR EXPORT

**OPEN SERIES MAP**

**No. G45T4**  
Scale 1:50,000

G45S15 (72D-15)	G45T3 (72H-3)	G45T7 (72H-7)
G45S16 (72D-16)	<b>G45T4</b> (72H-4)	G45T8 (72H-8)
F45A13 (73A-13)	F45B1 (73E-1)	F45B5 (73E-5)

भारतीय सर्वेक्षण विभाग SURVEY OF INDIA

1st Edition 2009 Price: Rs. 50/-

132 KV D/C ITKHORI TO CHATRA TRANSMISSION LINE (ALTERNATE ROUTE)

**CONVENTIONAL SYMBOLS**

Express highway, with cut, with bridge, with distance stone	
Roads, metalled according to importance	
Roads, double carriageway, according to importance	
Unmetalled road, Cart-track, Path, track with axle, Foot-path	
Sensory: with track in fact, underfoot, Gully	
Ditch, masonry or rock-lined, earthwork, Wall	
Flow: dry with water channel, with island & rocks, Tidal, near	
Submerged rocks, Shoal, Swamp, Rocks	
Wells: lined, unlined, Tube-well, Spring, Tank, perennial, dry	
Conformations: road or rail, tank, Broken ground	
Railways: broad gauge, metric, single with distance stone, do	
Mineral line or conveyor, Kib, Cutting with tunnel	
Contours with sub-features, Rocky slopes, Cliffs	
Sand features: (Wet) (Dried) (barrenness) (Subsiding)	
Forest or thicket: inhabited, deserted, for	
Thicket, permanent, temporary, Thicket, Airports	
Temples, Ghats, Church, Mosque, Ghat, Tank, Urns	
Lighthouses, Lighthouses, Buoys, Light, unlit, Anchorage	
Other: (see in title, Green, Bush)	
Public buildings: Police, Court, Bank, Other, trees	
Ascent, (steepness), (slope), (steepness)	
Boundary: international	
State demarcation, undemarcated	
Boundary: village, sub-division, taluk or taluk, town	
Height: triangulated station, precise, approximate	
Spot height: (station), (precise), (approximate)	
Post office, Telegraph office, Overhead tank	
Rail house or inspection burghouse, Circle house, Police station	
Camping ground, Forest: reserved, protected	
Second class, administrative, locality or tribal	
Hospital, Dispensary, Veterinary, Hospital/Dispensary	
Aerodrome, Helipad, Tanka site	
Power line: with pylons surveyed, with poles (unsurveyed)	

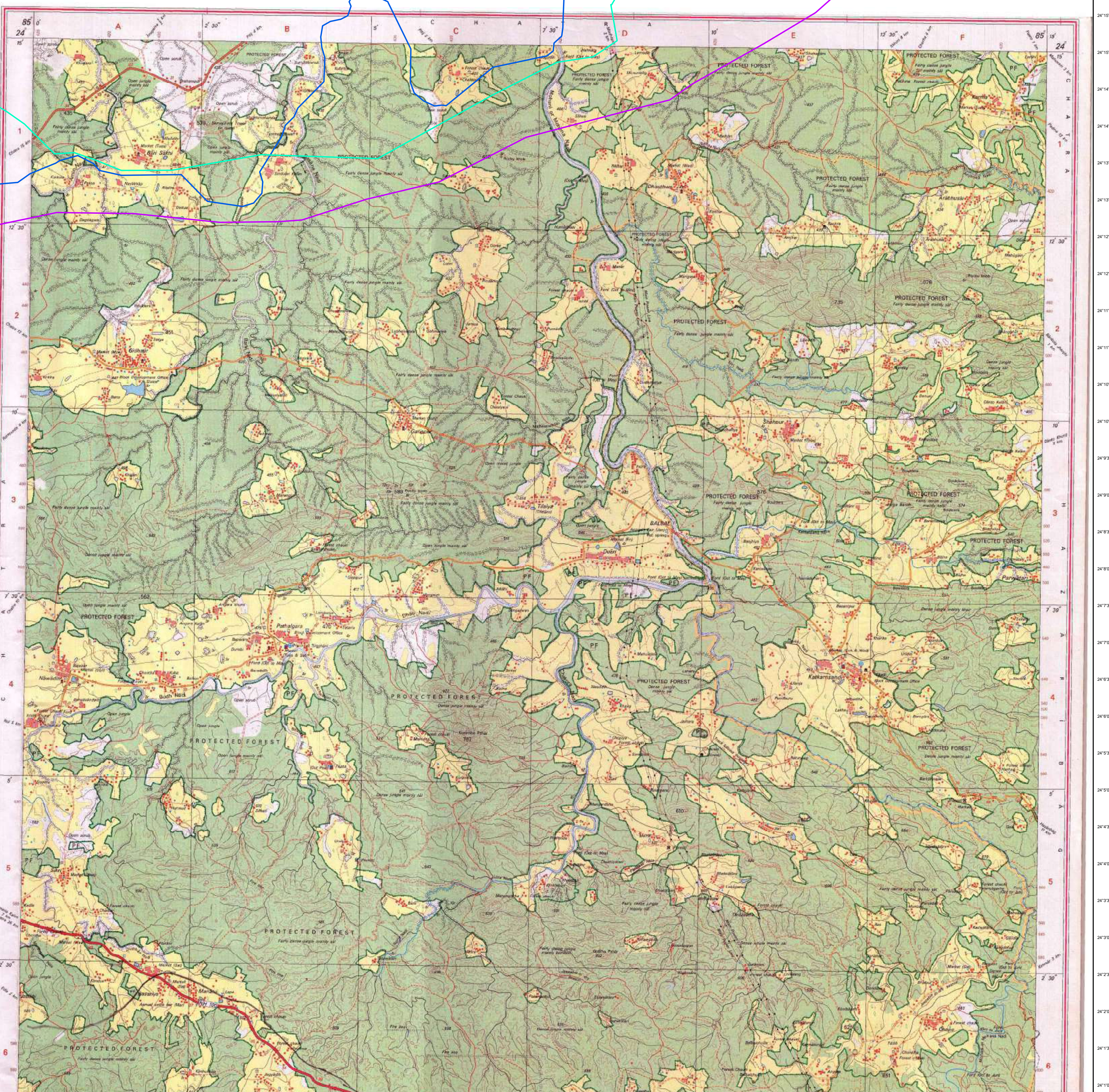
**REFERENCE**  
Nil Nil National Highway No. 100

**NOTES**  
1. Heights are in metres and above Indian mean sea level.  
2. Contours are approximate.  
3. A relative height, or represents the approximate height in metres between the top and bottom of a steep slope.  
4. Dates shown are, in this area, usually between from July to February.  
5. Wells are indicated throughout the sheet; only the important ones have been shown.  
6. The asterisk boundaries of areas of Reserved or Protected Forests are shown by green borders, the alternate stone boundaries along roads are shown in blue type, e.g. 'S' whereas ordinary boundaries are shown in black type, e.g. 'S' whereas ordinary boundaries are shown in black type, e.g. 'S'.

**COMPILATION INDEX**  
A. Surveyed during 1977-78, updated for major details during 2006-07.

Projection - UTM Datum - WGS 84  
Magnetic Variation from True North about 1/2° West in 2005.  
(Decreases by about 1/2° annually)

Scale 1:50,000  
300 m to 1 cm  
3 km to 1 km  
CONTOUR INTERVAL: 20 METRES



**Legend**

- ROUTE\_2
- ROUTE\_3
- TRANSMISSION\_LINE

