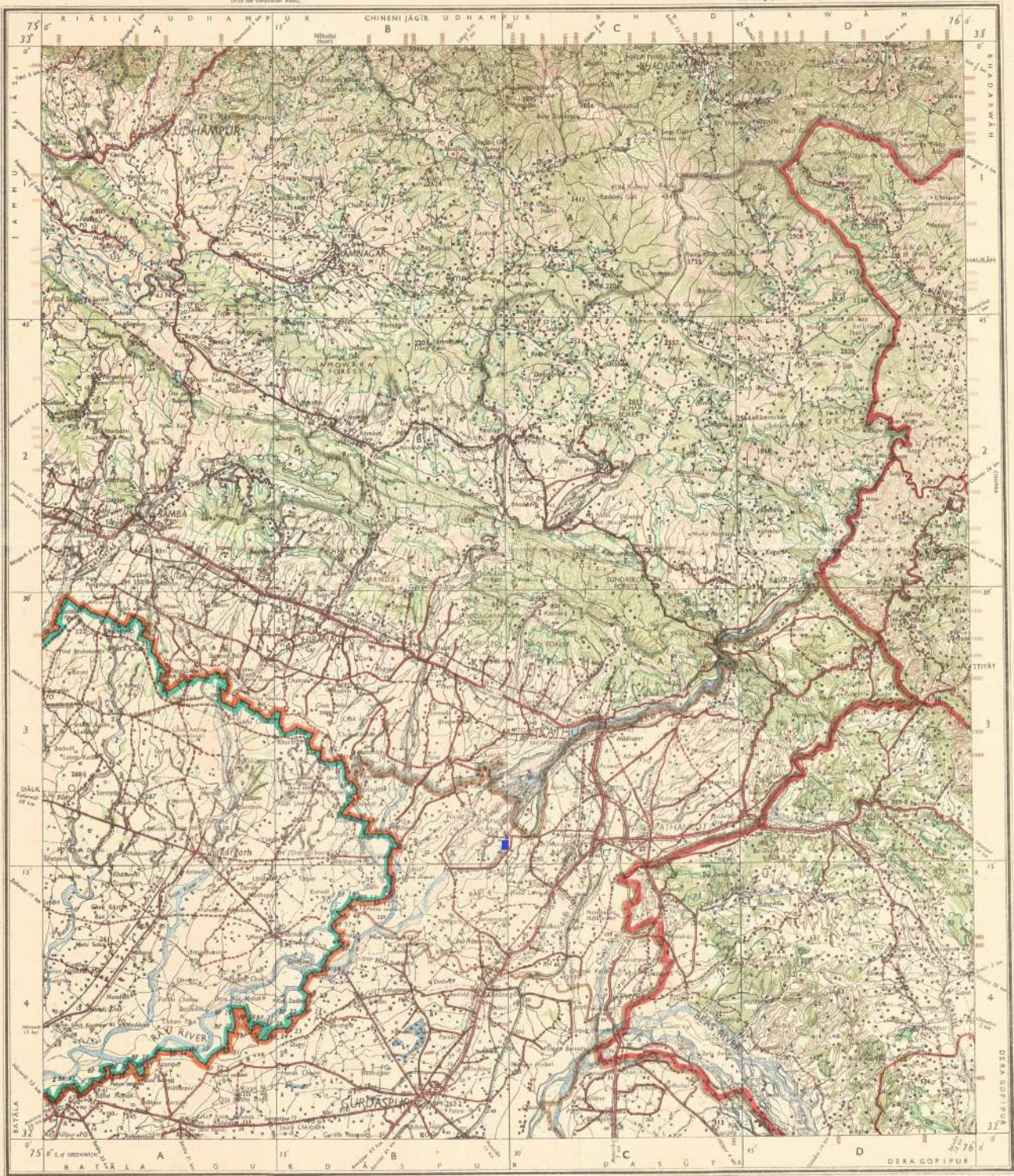


Compiled from various sources.
(See the compilation notes.)

Magnetic Variation from True North about 1 1/2 East in 1970.
(Showing by about 1/2 degree.)



Scale No. 2218 ND773 (D. O. No. 1/250,000-1009-III/75)
1:250,000
1 cm = 2.5 km
1 inch = 6.35 km

Published under the direction of Dr. Hari Mohan, P.W.D., P. O., Director-General of India, 1970.

Scale 1:250,000
1 cm = 2.5 km
1 inch = 6.35 km

Heights & Contours in Metres
Contour Interval 500 Metres

* Major features are shown in blue where they generally coincide with the boundary of the State. The minor features of areas of Jammu or Province of Jammu are shown in green where they coincide with the boundary of the State.

* No. applies.

The unstriped heights and contours in this sheet are on feet related to the height of the geoid (mean sea level) and may not be strictly in accordance with them.

Mean in section C-D & D-E generally reads open from P to H in metres.

The area adjoining the Red and Blue lines are liable to change owing to continued fluctuations in the course of the River.

The main pillars of the Indo-Pakistan boundary are shown larger and secondary smaller.

Small areas in Jammu & Kashmir are demarcated between the two boundaries on those where demarcated boundaries of present and former States in Hindustan are shown where demarcated.

The following areas mentioned along roads are shown in blue (1970-71) where otherwise mentioned are shown in green (1964-65).

The course of the Turakhi in and pillar B has shifted so greatly since the previous survey that adjustment to the Indo-Pakistan boundary is between A) and B) is not possible.

Distance shown along roads where marked are 1,000 feet apart and every twentieth mile is shown.

Unmarked roads along roads where marked are shown by asterisk symbols; these are usually not suitable for passage as no data are available from the trigonometric authorities.

Index to Sheet

41	42	43	44
41	42	43	44
41	42	43	44
41	42	43	44

International numbering

143	144	145
143	144	145
143	144	145
143	144	145

Administrative Index

1	RIASI & K.
2	JAMMU, J & K.
3	CHAMBA, P.P.
4	HOSHIARPUR, PUNJAB.
5	GURDASPUR, PUNJAB.
6	PUNJAB, J & K.

Physical Index

1	200	200	200
2	200	200	200
3	200	200	200
4	200	200	200
5	200	200	200
6	200	200	200

Physical Index (continued)

7	200	200	200
8	200	200	200
9	200	200	200
10	200	200	200
11	200	200	200
12	200	200	200

Physical Index (continued)

13	200	200	200
14	200	200	200
15	200	200	200
16	200	200	200
17	200	200	200
18	200	200	200

Physical Index (continued)

19	200	200	200
20	200	200	200
21	200	200	200
22	200	200	200
23	200	200	200
24	200	200	200

Physical Index (continued)

25	200	200	200
26	200	200	200
27	200	200	200
28	200	200	200
29	200	200	200
30	200	200	200

REFER TO THIS MAP AS— 1:250,000
SHEET 43 P FIRST EDITION
INDIA

REFERENCES

1	W.I. Indian Highway No. 13	Map	1:250,000
2	W.I. Wooden bridge	Map	1:250,000

COMPILED INDEX

A	Modern survey 1945-46	With additions and alterations based on
B	Modern survey 1945-46	on satellite survey carried out
C	Modern survey 1945-46	during 1972-74.
D	Modern survey 1945-46	
E	Modern survey 1945-46	
F	Compiled from various sources.	

Division of 0.824 ha. forest land for construction of approach road to House at Khat to Subana road km 5-1.5 (Khat Village Subana under Forest Division & District Parkaokot, Dist. Sh. Kamalpur No. 58 Parkaok Choud Mohalla Bhakki Dist. Parkaokot J & K No. Proposal PP/PK/Approach/3095/2017

RESTRICTED

The map is NOT to be added, copied or reproduced in part or in whole without the permission of the Controller of Publications, Government of India, New Delhi.

GOVERNMENT OF INDIA COPYRIGHTERS.
Printed by the Government of India, New Delhi.