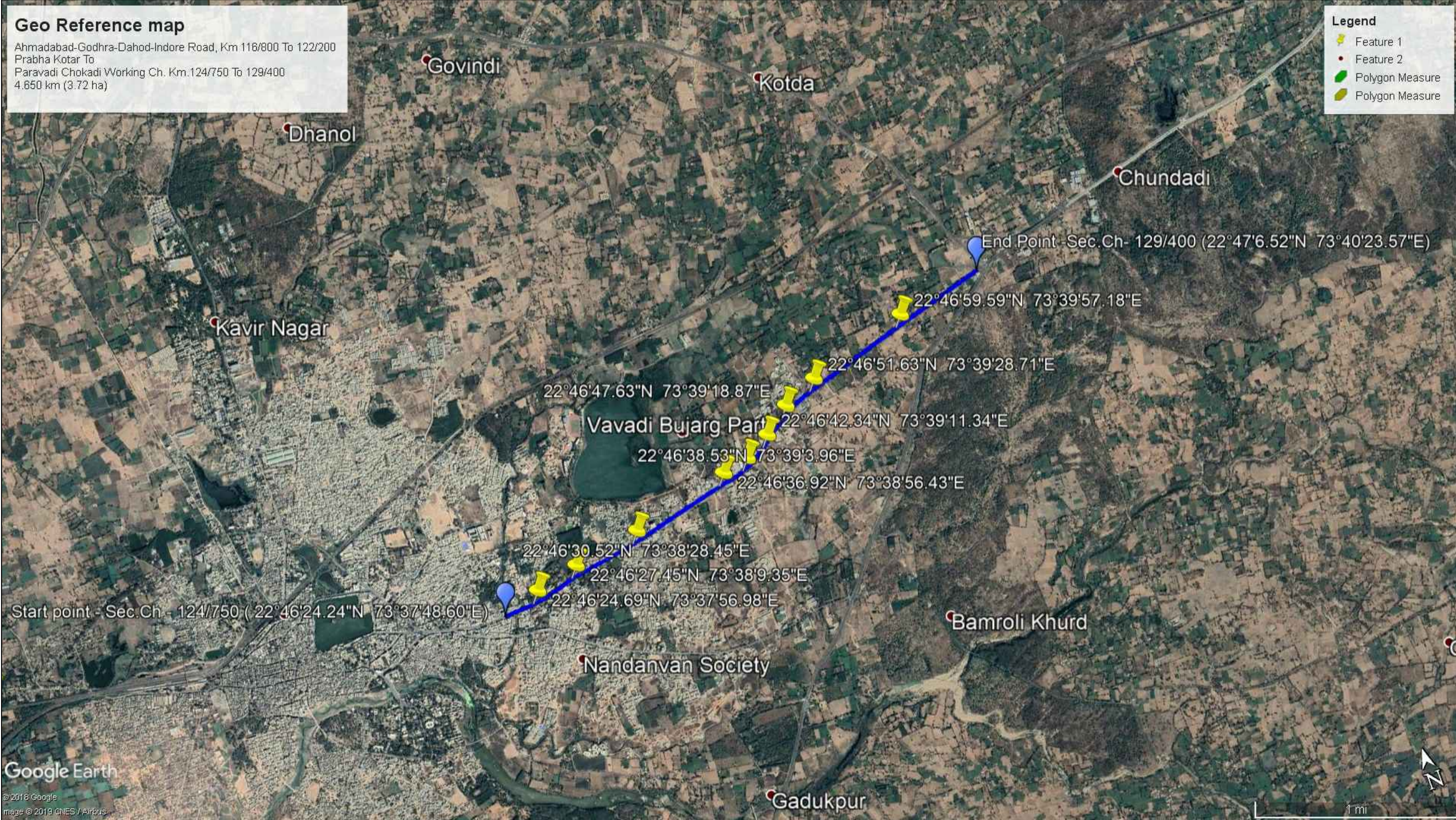


Diversion of 7.40 Ha. Protected Forest Land of Road Side For Four Laning of Ahmadabad-Godhra-Dahod-Indore Road, Km 116/800 To 122/200 (Bhamaiya Crossing To S.T Nagar, Working Ch. Km. 117/600 to 122/200) And Km.124/600 To 129/400(Prabha Kotar To Paravadi Chokadi , Working Ch. Km.124/750 To 129/400), Taluka- Godhra of Panchmahal District.



— Diverted Area

Deputy Executive Engineer
R & B Sub Division
Godhra

Executive Engineer
R & B Division
Godhra