

**Distance of the proposed quarry area from Wild Sanctuaries of SPSR
Nellore District**

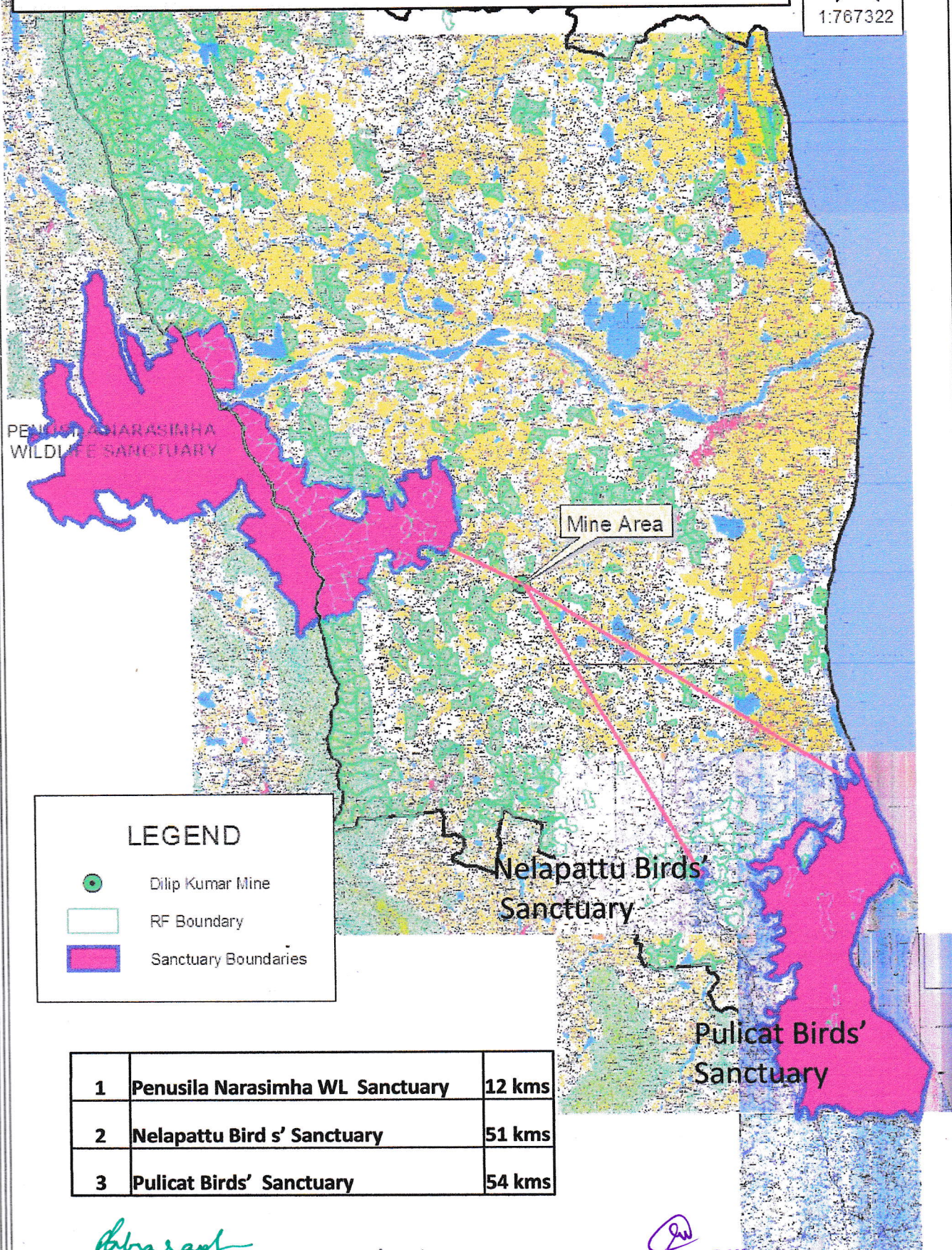
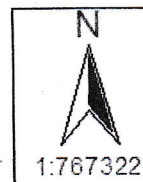
The proposed quarry lease in Compartment No. 121 of Utukuru RF of Venkatagiri Range of Nellore Forest division by Sri P. Dileep Kumar is at the following distance to each Sanctuary of Nellore District.

Sl. No.	Name of the Sanctuary	Distance from the Sanctuary to proposed quarry area (in KM)
1	Sri Penusila Narasimha Wild Life Sanctuary	12
2	Nelapattu Birds' Sanctuary	51
3	Pulicat Birds' Sancatuary	54


Forest Range Officer
VENKATAGIRI.


District Forest Officer,
SPSR Nellore.

Map showing the distance from Sanctuary to proposed quarry lease by Sri P. Dileep Kumar in 4.89 ha of Utukuru forest land in compartment No.121 Chaganam Beat, Venkatagiri Range of Nellore Division, SPSR Nellore District,



[Signature]
Forest Range Officer
VENKATAGIRI.

[Signature]

[Signature]
District Forest Officer
SPSR NELLORE