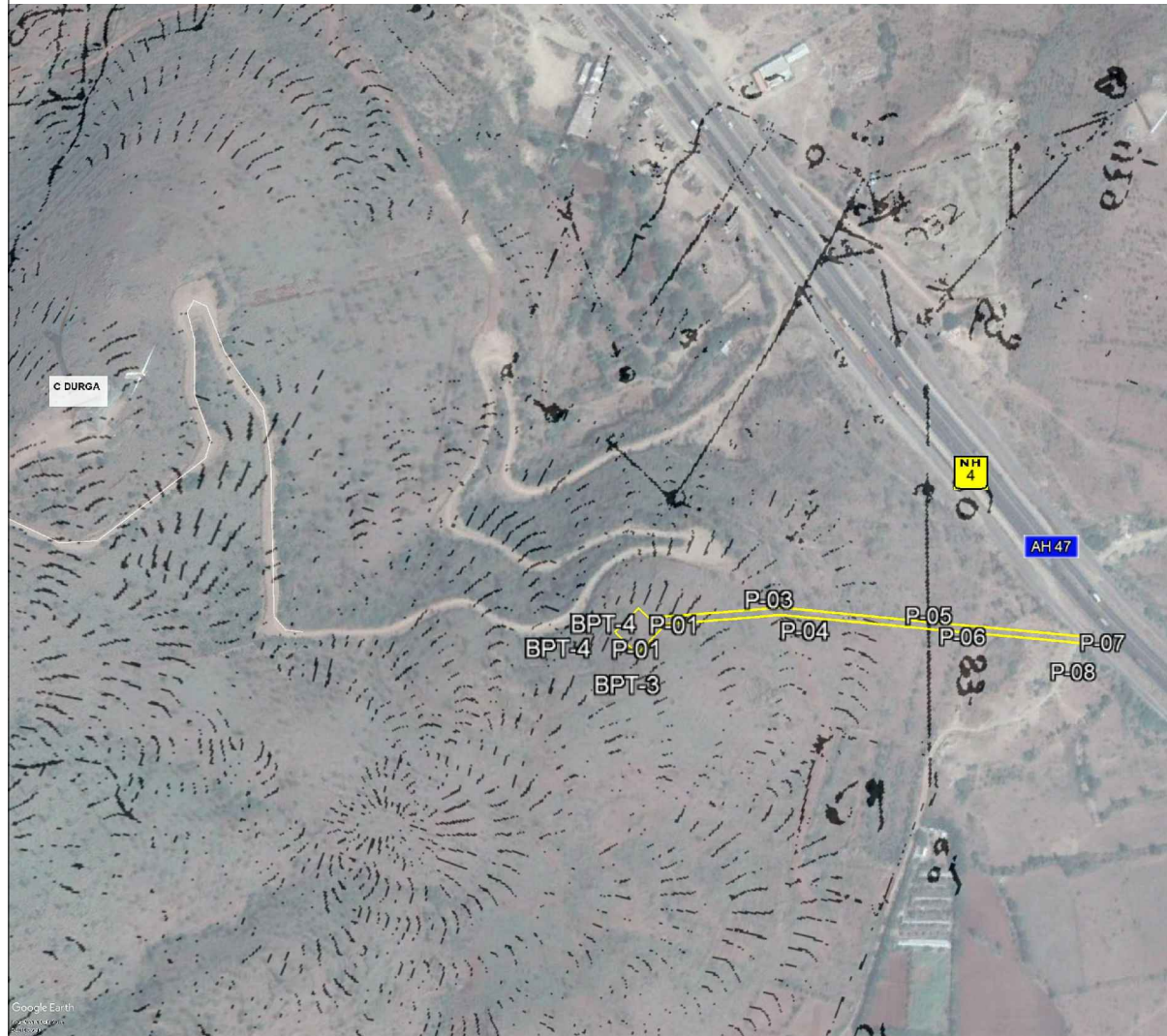


# GOOGLE MAP OF CHITRADURGA VILLAGE MAP OVER LAY FOR THE WORK OF CONSTRUCTION OF B.P.T AND RAISING MAIN & GRAVITY MAIN PIPE LINE, (UNDER AMRUTH SCHEME) IN JOGIMATTI S.F. IN CHITRADURGA.



AREA DETAILS OF B.P.T AND RAISING MAIN & GRAVITY MAIN PIPE LINE IN JOGIMATTI S.F. IN F.Sy. No.33 OF CHITRADURGA VILLAGE (NEMAKAL GARAGE) CHITRADURGA.								
SL. NO.	DESCRIPTION	SIZE (LENGTH X WIDTH) IN MTRS	EXTENT IN Ha.	F. SY. NO.	VILLAGE	HOBBI	TALUK	DISTRICT
1	AREA FOR PROPOSED BPT (5 Laks Ltr capacity)	24.175M X 24.175 M	0.0584	33	CHITRADURGA	KASABA	CHITRADURGA	CHITRADURGA
2	PROPOSED AREA FOR RAISING MAIN & GRAVITY MAIN PIPE LINE	232.9 M X 6 M	0.1397	33	CHITRADURGA	KASABA	CHITRADURGA	CHITRADURGA
TOTAL EXTENT IN Ha.			0.1981					

AREA DETAILS OF RAISING MAIN & GRAVITY MAIN PIPE LINE IN R.Sy. No.85, Sy. No. 70 & 71 OF KUNCHIGANALU VILLAGE (NEMAKAL GARAGE) CHITRADURGA TALUK.										
SL. NO.	DESCRIPTION	SIZE (LENGTH X WIDTH) IN MTRS	EXTENT IN Ha.	F. SY. NO.	VILLAGE	HOBLI	TALUK	DISTRICT		
1	PROPOSED AREA FOR RAISING MAIN & GRAVITY MAIN PIPE LINE IN REVENUE LAND	45.0 M X 6 M	0.0270	85	KUNCHIGANALU	KASABA	C	C		
									H	H
									I	I
									T	T
2	PROPOSED AREA FOR RAISING MAIN & GRAVITY MAIN PIPE LINE IN PRIVATE LAND	32.0 M X 6 M	0.0192	71			R	R		
							A	A		
							D	D		
							U	U		
3		49.0 M X 6 M	0.0294	70			R	R		
							G	G		
							A	A		
TOTAL EXTENT IN Ha.			0.0756							

GPS DETAILS OF B.P.T AND RAISING MAIN & GRAVITY MAIN PIPE LINE IN JOGIMATTI S.F. IN F.Sy. No.33 OF CHITRADURGA VILLAGE & R. Sy. No.85 , Sy. No. 70 & 71 OF KUNCHIGANALU VILLAGE IN CHITRADURGA TALUK.							
SL. NO.	GPS ID	NORTHING	EASTING	LATITUDE (UTM)	LONGITUDE (UTM)	REMARKS	
1	BPT-1	N14 11 55.73	E76 25 43.42	654170.1351	1570186.0479	GPS BOUNDARY POINTS OF PROPOSED BPT (5 Laks Ltr capacity)	
2	BPT-2	N14 11 55.19	E76 25 44.04	654188.7105	1570169.3160		
3	BPT-3	N14 11 54.59	E76 25 43.48	654170.9786	1570150.7406		
4	BPT-4	N14 11 55.13	E76 25 42.86	654153.4032	1570167.4725		
5	P-01	N14 11 55.49	E76 25 43.70	654178.4052	1570178.5985	GPS POINTS OF PROPOSED RAISING MAIN & GRAVITY MAIN PIPE LINE IN FOREST	
6	P-02	N14 11 55.31	E76 25 43.90	654184.5614	1570173.0533		
7	P-03	N14 11 55.73	E76 25 47.11	654280.5164	1570186.4349		
8	P-04	N14 11 55.53	E76 25 47.10	654280.4167	1570180.4096		
9	P-05	N14 11 55.22	E76 25 51.52	654412.9507	1570171.8506		
10	P-06	N14 11 55.03	E76 25 51.50	654412.3395	1570165.8816	GPS POINTS OF RAISING MAIN & GRAVITY MAIN PIPE LINE IN REVENUE & PRIVATE LAND	
11	P-05	N14 11 55.22	E76 25 51.52	654412.9507	1570171.8506		
12	P-06	N14 11 55.03	E76 25 51.50	654412.3395	1570165.8816		
13	P-07	N14 11 54.81	E76 25 55.70	654538.2827	1570159.9866		
14	P-08	N14 11 54.60	E76 25 55.83	654542.1604	1570153.5928		