

निर्यात के लिए नहीं NOT FOR EXPORT

मध्य प्रदेश MADHYA PRADESH

FIRST EDITION

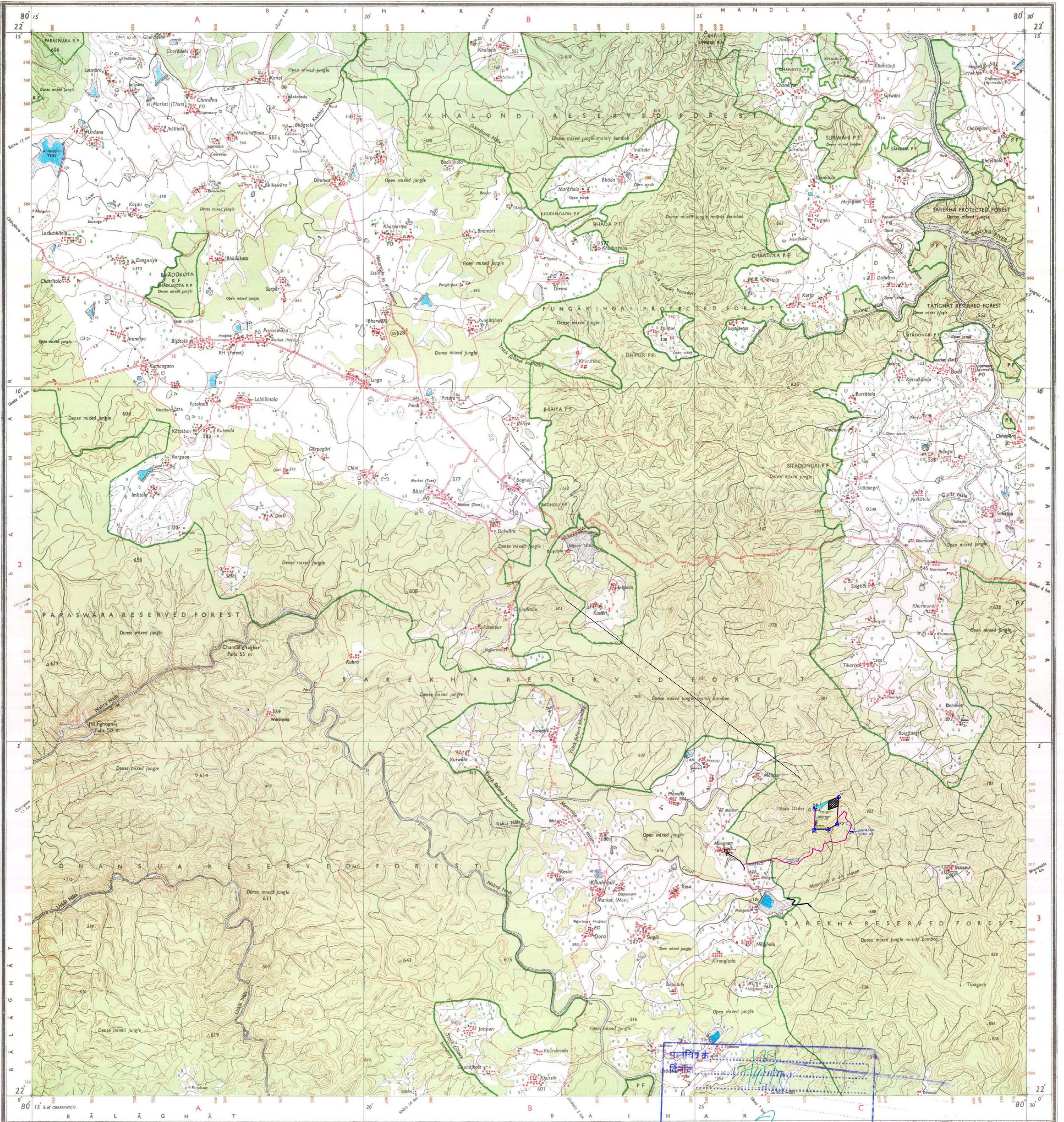
भारत INDIA
REFER TO THIS MAP AS - I:50,000
SHEET 64 B/8 FIRST EDITION

BALAGHAT & MANDLA DISTRICTS.

Surveyed 1974-75.

Magnetic Variation from True North about 7' West in 1975.
(Decreasing by about 1' annually).

No. 64 B/8

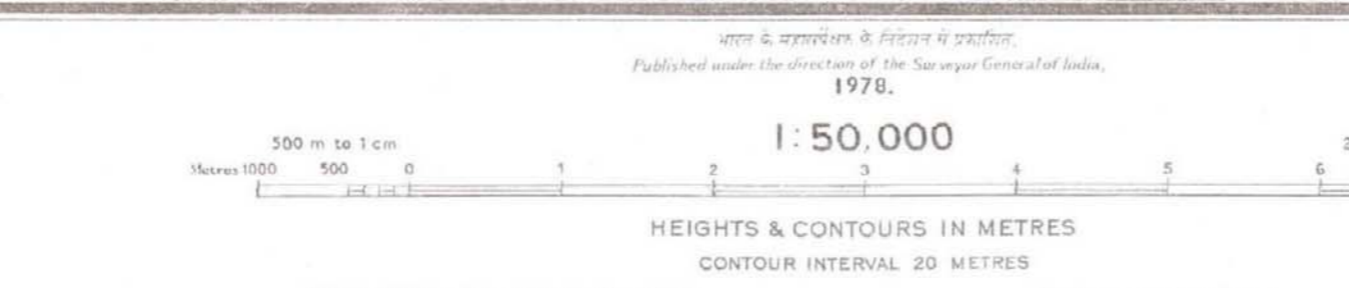


REG. No. 7173, NPG. 12/786/G. 61-133,333-2612/81-3610/91, Hq. 56/98

| | | |
|---|-----------------------|--------|
| Roads, metalled: according to importance: distance stone | unmetalled, ditto | bridge |
| Cut-tracks: Pack-track and pass | Foot-path with bridge | |
| Bridges: with pieris, masonry, Causeway, Ford or Ferry | | |
| Streams: with track in bed, unfordable, Canal | | |
| Dams: masonry or rock-filled, earthwork, With | | |
| River banks: shelving, steep, 3 to 6 metres, over 6 metres | | |
| any with water channel, with bridge, rock, tidal river | | |
| Submerged rocks, Shoal, Swamp, Road | | |
| Wells: hand, out-laid, Tube-well, Spring, Tank, perennial, dry | | |
| Embankments: road or rail, tank, Broken Ground | | |
| Railways, broad gauge: double single with station, under construction | | |
| other gauge: ditto, ditto, ditto, ditto, ditto, ditto, ditto, ditto | | |
| Mineral lines or tramway, Telegraph lines, Cables, with tunnel | | |
| Contours with sub-features: Rocky slopes, Cliffs | | |
| Sand features: dunes, dunes, hills and dunes, surveyed, ditto, ditto | | |

Index to Sheets

| | | |
|------|-------|-------|
| 64/3 | 64/4 | 64/5 |
| 64/6 | 64/7 | 64/8 |
| 64/9 | 64/10 | 64/11 |



PRINTED AT THE NORTHERN PRINTING GROUP OF SURVEY OF INDIA

| | |
|--|--|
| Seems or Villages: inhabited, deserted, Fort | |
| Ports: permanent, temporary, Tower, Fortification | |
| Temples, Churches, Mosques, Igars, Tanks, Graves | |
| Lighthouses, Lightships, Buoys, Light-buoys, Anchorage | |
| Line: Wire on trestle, Grass, Scrub | |
| Alms: pauper, other, Plantain, Cane, Bamboo, Other trees | |
| Boundary: international | |
| State boundaries, unmetalled, metalled | |
| districts, sub-division, taluk, or taluk, forest | |
| Boundary pillars: surveyed, unmetalled, village, trigonometric | |
| Height: triangulated station, pole: approximate, 200, 200, 200 | |
| Benchmark: geodetic, levelling, signal, BM 633, 648, 633, 643 | |
| Post office, telegraph office, Combined office, Police station, P.O., T.O., P.O., T.O. | |
| Bungalow, dak or travellers' inspection, Post-house, D.B. (Post), S.H. (Post) | |
| Circuit house, Camping ground, Forest, reserved, protected, C.H. (S), R.F. P.F. | |
| Spaced names: administrative, locality or tribal, (KIKRI), NAGA | |

REFER TO THIS MAP AS - I:50,000
SHEET 64 B/8 FIRST EDITION
INDIA भारत

GOVERNMENT OF INDIA COPYRIGHT, 1975.
No. 43 (Rs. Eighty Five)