



Shop :- 01907-221551

Mob :- 94180-44351

E mail :- msnegiksg@gmail.com

# **BHAGWATI HYDRO POWER PROJECT (OPC) PRIVATE LIMITED**

H.O. Village Mumail P.O. & Teh. Karsog- Distt. Mandi (HP) 175011

Ref. ....

Dated 22/05/2024

## **Detial List of the Up Stream and Down Stream Projects of Nearby Kandha SHEP**

Sr. No.	Name of the Project	Capacity In MW	River	Stream/ Nallah	Weir Elevation	Power House Elevetaion	Remarks
1	Kandha	0.40 MW	Satluj	Kau Khad	1065 m	1040 m	Proposed
2	Chaira	4.30 MW	Satluj	Chaira	1030 m.	855 m	Proposed

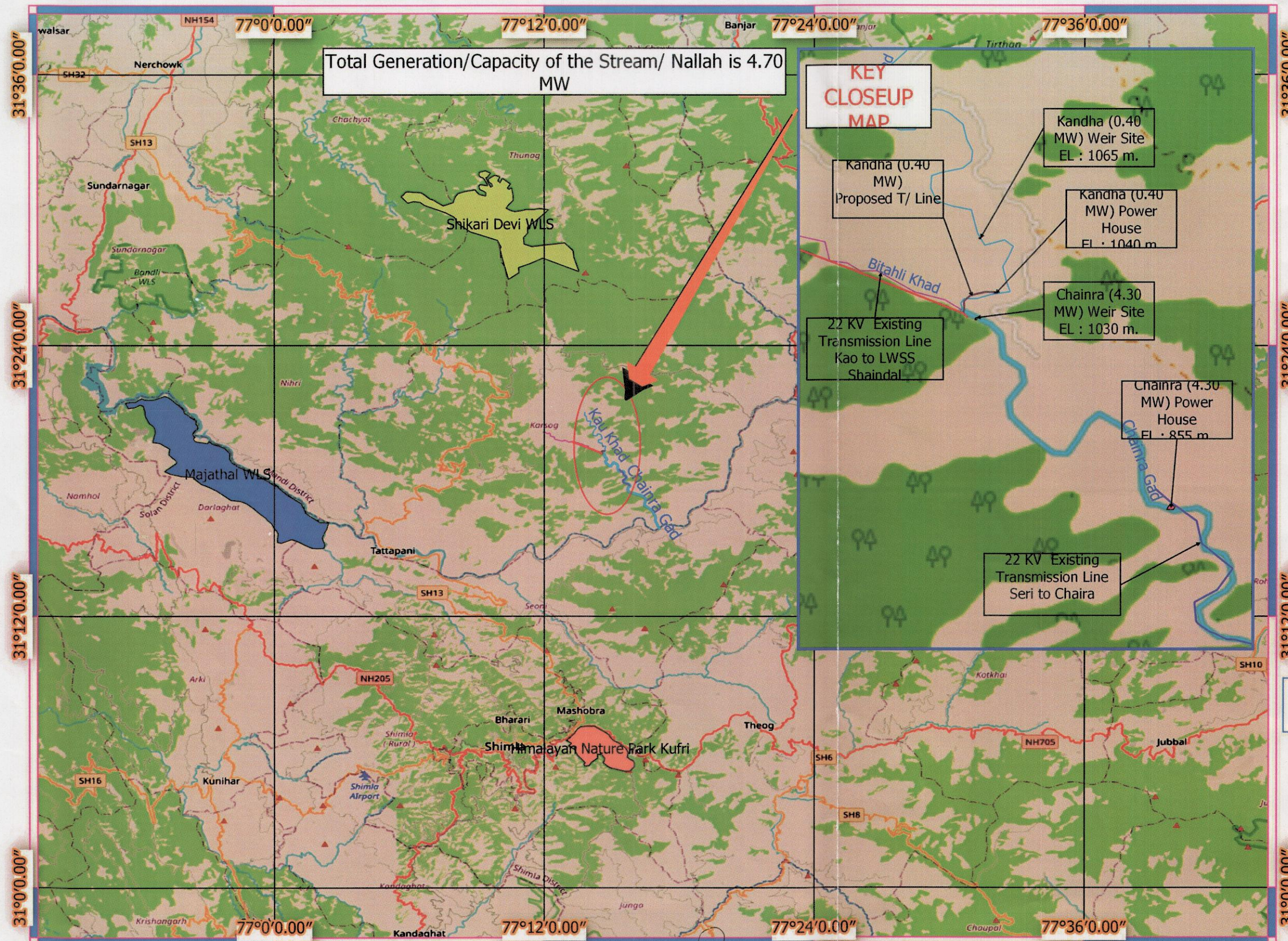
**Total Capacity of the Nalla is 4.70 MW**

Authorized Signatory

  
MANAGING DIRECTOR  
BHAGWATI HYDRO POWER PROJECT  
(OPC) PRIVATE LIMITED  
H.O. Village Mumail P.O. & Teh. Karsog  
Distt. Mandi (H.P.) - 175011



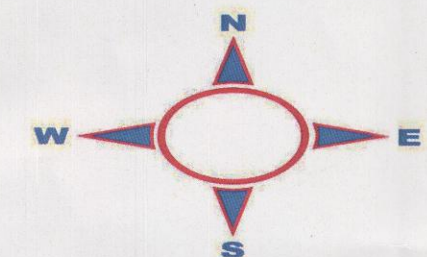
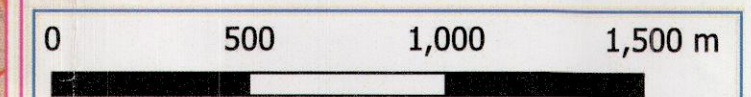
# Digital Map of Proposed/Existing/ Commissioned Project in the river basin area/ Landscape showing Transmission line Nearby Kandha SHEP (0.40 MW).



## LEGEND

- Up Stream & Down Stream Projects
  - Chainra (4.30 MW) Power House
  - Chainra (4.30 MW) Weir Site
  - Kandha (0.40 MW) Power House
  - Kandha (0.40 MW) Weir Site
- Transmission Line
  - 22 kV Existing Transmission Line Kao to LWSS Shaindal
  - 22 KV Existing Transmission Line Seri To Chaira
  - Kandha SHEP
  - Proposed Transmission Line
- WLS
  - Himalayan Nature Park Kufri
  - Majathal WLS
  - Shikari Devi WLS
- River
  - Chainra Gad
- Stream/ Nallah
  - Bitahli Khad
  - Kau Khad

Scalebar Unit = Meter  
Label Unit Multiplier = 15.00



## AFFINITY ENGINEERING & WORKS



Prepared / Designed By : Hem Raj Thakur  
Checked / Approved By : Mohan Thakur

Mail ID : affinityhydro@gmail.com

Divisional Forest Officer,  
Karsog Forest Division, H.P.

MANAGING DIRECTOR  
BHAGWATI HYDRO POWER PROJECT  
(OPC) PRIVATE LIMITED  
H.O. Village Mumail P.O. & Teh. Karsog  
Distt. Mandi (H.P.) - 175011

Developer  
Bhagwati Hydro Power Project (OPC) Pvt. Ltd.



Toposheet Map of Proposed/Existing/ Commissioned Project in the river basin area/ Landscape showing Transmission line Nearby Kandha SHEP (0.40 MW).

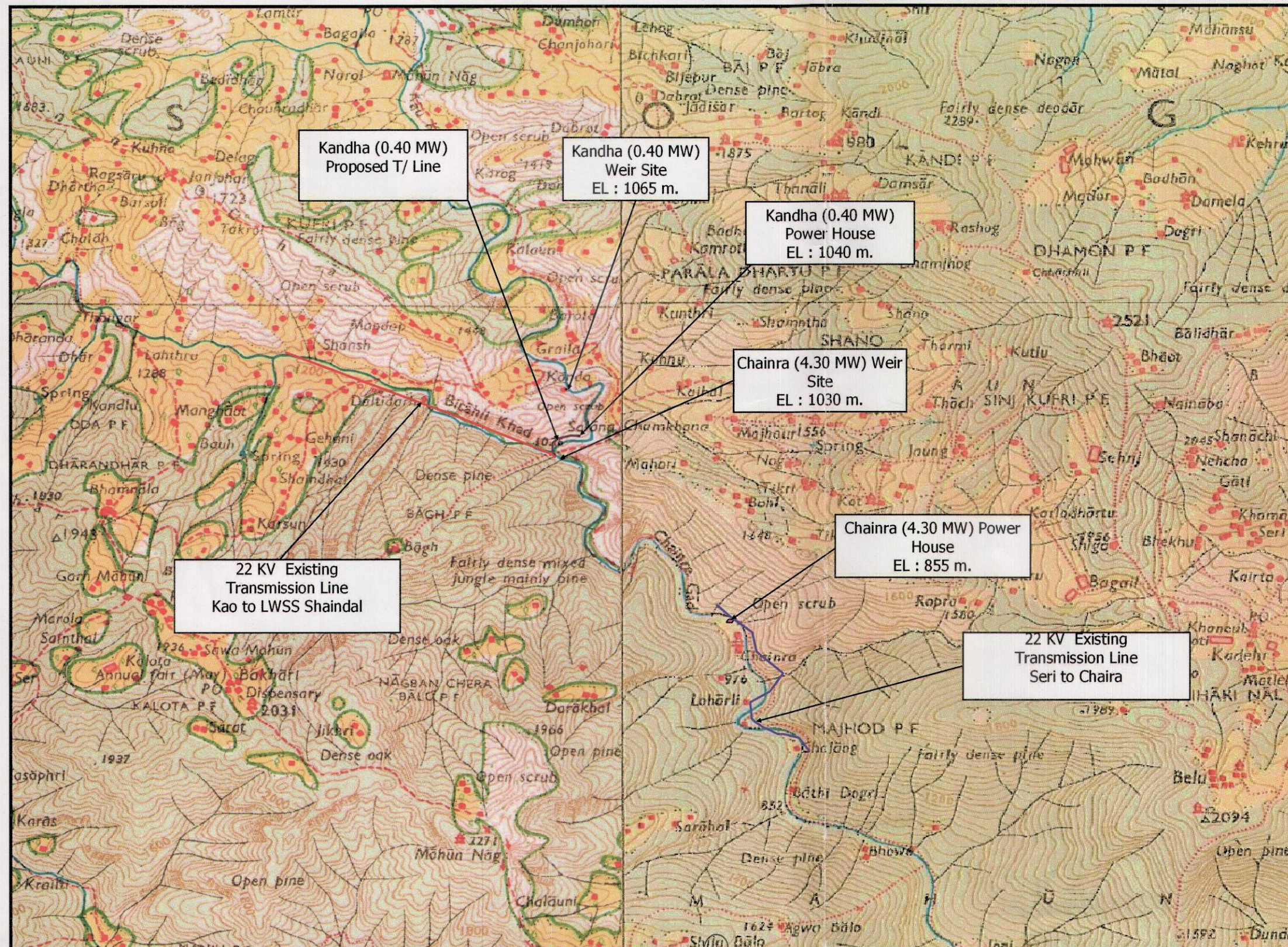
Total Generation/Capacity of the Stream/ Nallah is 4.70 MW

LEGEND

- Up Stream & Down Stream Projects
- Chainra (4.30 MW) Power House
- Chainra (4.30 MW) Weir Site
- Kandha (0.40 MW) Power House
- Kandha (0.40 MW) Weir Site
- Transmission Line
- 22 kv Existing Transmission Line Kao to LWSS Shaindal
- 22 KV Existing Transmission Line Seri To Chaira
- Kandha SHEP
- Proposed Transmission Line
- WLS
- Himalayan Nature Park Kufri
- Majathal WLS
- Shikari Devi WLS
- River
- Chainra Gad
- Stream/ Nallah
- Bitahli Khad
- Kau Khad

Scalebar Unit = Meter  
Label Unit Multiplier = 15.00

0 500 1,000 1,500 m



AFFINITY ENGINEERING & WORKS



Prepared / Designed By : Hem Raj Thakur  
Checked / Approved By : Mohan Thakur

Mail ID : affinityhydro@gmail.com

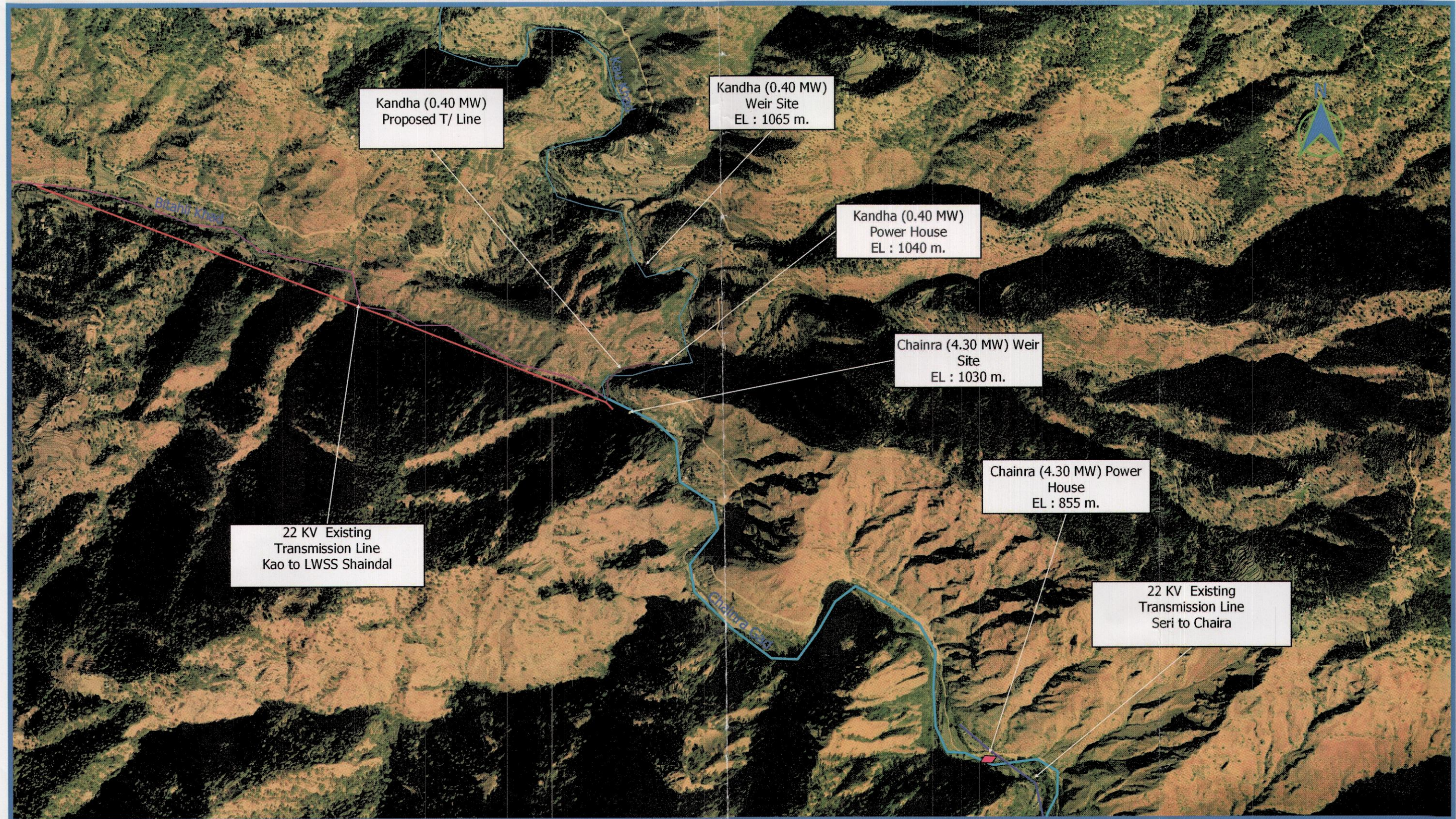
Divisional Forest Officer,  
Karsog Forest Division, H.P.

MANAGING DIRECTOR  
BHAGWATI HYDRO POWER PROJECT  
(OPC) PRIVATE LIMITED  
H.O. Village Mumail P.O. & Teh. Karsog  
Distt. Mandi (H.P.) - 175011

Developer  
Bhagwati Hydro Power Project (OPC) Pvt. Ltd.



Satellite Map of Proposed/Existing/ Commissioned Project in the river basin area/ Landscape showing Transmission line Nearby Kandha SHEP (0.40 MW).



Divisional Forest Officer,  
Karsog Forest Division, H.P.

0 500 1,000 1,500 2,000 m

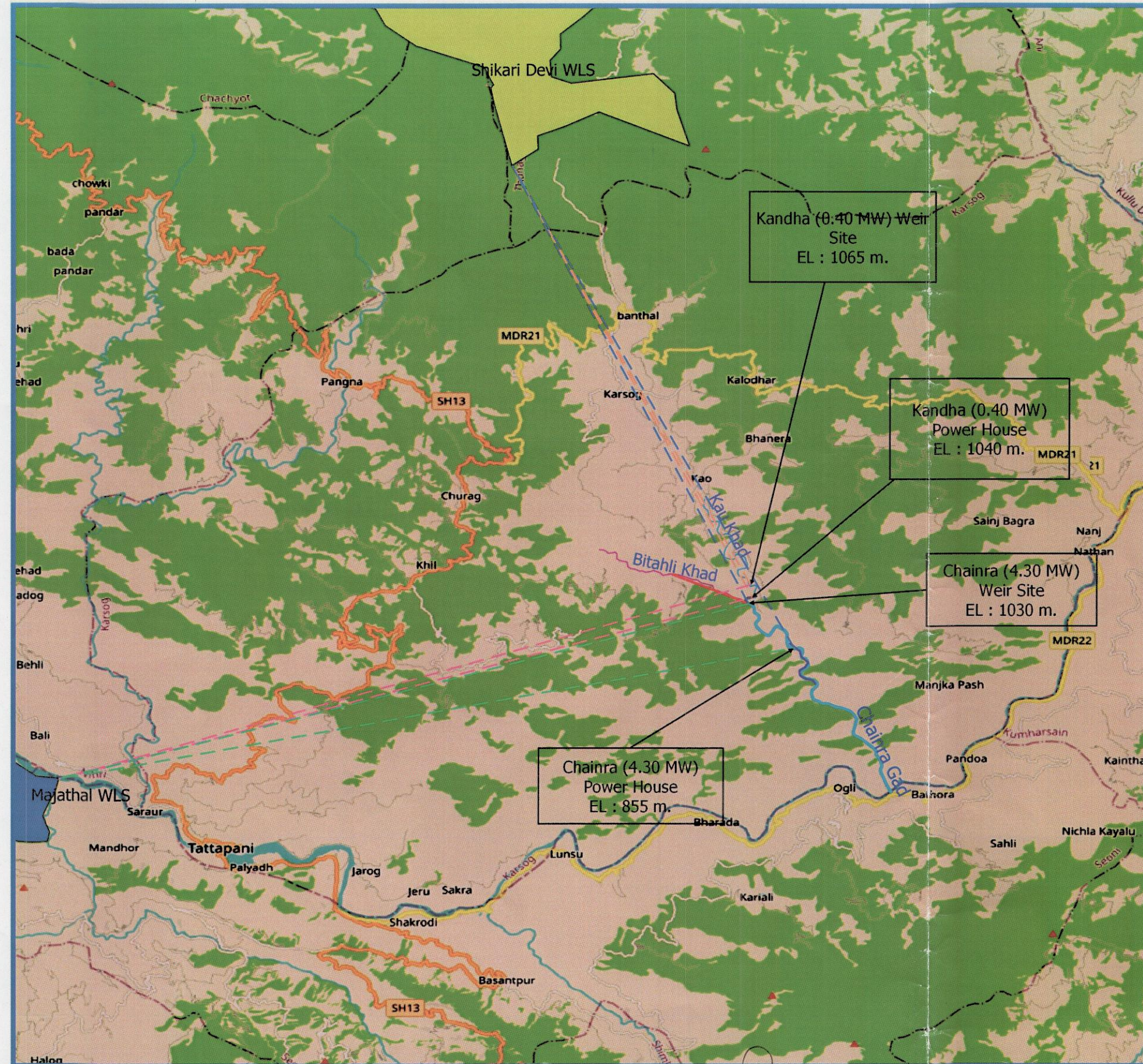
**AFFINITY ENGINEERING & WORKS**  
Prepared / Designed By : Hem Raj Thakur  
Checked / Approved By : Mohan Thakur  
Mail ID : affinityhydro@gmail.com

MANAGING DIRECTOR  
BHAGWATI HYDRO POWER PROJECT  
(OPC) PRIVATE LIMITED  
H.O. Village Mumail P.O. & Teh. Karsog  
Distt. Mandi (H.P.) - 175011

**Developer**  
**Bhagwati Hydro Power Project (OPC) Pvt. Ltd.**



# Aerial Distance Map of Proposed/Existing/ Commissioned Project in the river basin area/ Landscape showing Transmission line Nearby Kandha SHEP (0.40 MW).



## LEGEND

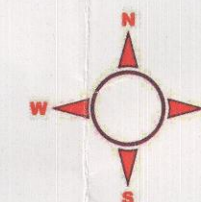
- Up Stream & Down Stream Projects
- Chainra (4.30 MW) Power House
- Chainra (4.30 MW) Weir Site
- Kandha (0.40 MW) Power House
- Kandha (0.40 MW) Weir Site
- Transmission Line
- 22 KV Existing Transmission Line Kao to LWSS Shaindal
- 22 KV Existing Transmission Line Seri To Chaira
- Kandha SHEP
- Proposed Transmission Line
- WLS
- Himalayan Nature Park Kufri
- Majathal WLS
- Shikari Devi WLS
- River
- Chainra Gad
- Stream/ Nallah
- Bitahli Khad
- Kau Khad

## Aerial Distance From Nearest WLS

Aerial Distance show in Km.

- Distance from Kandha Weir to Shikari Devi WLS is 15.189 Km. & ESZ is 13.189 Km., Majhthal WLS is 20.402 Km. & ESZ is 18.402 Km.
- Distance from Kandha Power House to Shikari Devi WLS is 15.586 km. & ESZ is 13.586 Km., Majhthal WLS is 20.336 Km. & ESZ is 18.336 Km.
- Distance from Chainra Weir to Shikari Devi WLS is 15.720 Km. & ESZ is 13.720 Km., Majhthal WLS is 20.161 Km. & ESZ is 18.161 Km.
- Distance from Chainra Power House to Shikari Devi WLS is 17.581 Km. & ESZ is 15.581 Km., Majhthal WLS is 21.065 Km. & ESZ is 19.065 Km.

0 2.5 5 7.5 10 km



## AFFINITY ENGINEERING & WORKS



Prepared / Designed By : Hem Raj Thakur  
Checked / Approved By : Mohan Thakur

Mail ID : affinityhydro@gmail.com

Divisional Forest Officer,  
Karsog Forest Division, H.P.

MANAGING DIRECTOR  
BHAGWATI HYDRO POWER PROJECT  
(OPC) PRIVATE LIMITED  
H.O. Village Mumail P.O. & Teh. Karsog  
Distt. Mandi (H.P.) - 175011

Developer  
Bhagwati Hydro Power Project (OPC) Pvt. Ltd.