

KAWADDARI (CH 220+872 to 221+472)				
Sr.No	Northing	Easting	Latitude	Longitude
1	2250328.200	722803.6727	20° 20' 16.76"	77° 8' 2.99"
2	2250417.687	722936.0826	20° 20' 19.61"	77° 8' 7.59"
3	2250419.479	723114.8611	20° 20' 19.59"	77° 8' 13.75"
4	2250529.937	723102.1756	20° 20' 23.19"	77° 8' 13.36"
5	2250558.803	723359.1933	20° 20' 24.02"	77° 8' 22.23"
6	2250390.819	723110.6346	20° 20' 18.66"	77° 8' 13.59"
7	2250246.237	722896.7028	20° 20' 14.05"	77° 8' 6.15"

KAWADDARI (CH 221+700 to 223+200)				
Sr.No	Northing	Easting	Latitude	Longitude
1	2249366.207	721379.7636	20° 19' 46.08"	77° 7' 13.48"
2	2249585.652	721704.9553	20° 19' 53.08"	77° 7' 24.79"
3	2249809.637	722036.3771	20° 20' 0.22"	77° 7' 36.31"
4	2249921.63	722202.088	20° 20' 3.76"	77° 7' 42.07"
5	2250070.587	722422.4935	20° 20' 8.54"	77° 7' 49.73"
6	2249977.403	722441.1123	20° 20' 5.51"	77° 7' 50.33"
7	2249993.588	722458.0614	20° 20' 6.03"	77° 7' 50.9"
8	2250092.022	722454.2106	20° 20' 9.23"	77° 7' 50.84"
9	2250181.041	722585.9284	20° 20' 12.07"	77° 7' 55.41"
10	2250073.032	722542.4076	20° 20' 8.57"	77° 7' 53.87"
11	2250009.755	722546.7891	20° 20' 6.51"	77° 7' 53.99"
12	2249709.687	722102.7908	20° 19' 56.95"	77° 7' 38.55"
13	2249485.701	721771.2374	20° 19' 49.80"	77° 7' 27.03"
14	2249282.523	721470.5523	20° 19' 43.32"	77° 7' 16.57"
15	2249305.721	721476.0622	20° 19' 44.08"	77° 7' 16.77"
16	2249325.681	721467.5154	20° 19' 44.73"	77° 7' 16.49"

KAWADDARI (CH 223+438 to 223+700)				
Sr.No	Northing	Easting	Latitude	Longitude
1	2249105.614	720966.2414	20° 19' 37.79"	77° 6' 59.12"
2	2249216.486	721147.7194	20° 19' 41.31"	77° 7' 5.42"
3	2249196.027	721174.2846	20° 19' 40.64"	77° 7' 6.33"
4	2249143.331	721146.1016	20° 19' 38.94"	77° 7' 5.33"
5	2249125.1	721227.8625	20° 19' 38.31"	77° 7' 8.14"
6	2249026.546	721067.7318	20° 19' 35.17"	77° 7' 2.58"
7	2249107.229	721015.5581	20° 19' 37.82"	77° 7' 0.82"

KAWADDARI (CH 223+900)				
Sr.No	Northing	Easting	Latitude	Longitude
1	2248974.829	720740.232	20° 19' 33.63"	77° 6' 51.27"
2	2248992.415	720771.4341	20° 19' 34.19"	77° 6' 52.35"
3	2248973.672	720772.6879	20° 19' 33.58"	77° 6' 52.39"
4	2248938.501	720767.1799	20° 19' 32.44"	77° 6' 52.18"

KAWADDARI (CH 224+200 to 224+250)				
Sr.No	Northing	Easting	Latitude	Longitude
1	2248833.739	720479.8418	20° 19' 29.15"	77° 6' 42.23"
2	2248853.04	720516.5792	20° 19' 29.76"	77° 6' 43.51"
3	2248787.396	720567.1118	20° 19' 27.61"	77° 6' 45.22"
4	2248731.65	720543.5703	20° 19' 25.80"	77° 6' 44.38"
5	2248833.739	720479.8418	20° 19' 29.15"	77° 6' 42.23"

KAWADDARI (CH 224+300 to 224+600)				
Sr.No	Northing	Easting	Latitude	Longitude
1	2248665.709	720142.5018	20° 19' 23.83"	77° 6' 30.53"
2	2248692.416	720198.7335	20° 19' 24.67"	77° 6' 32.48"
3	2248702.819	720488.1186	20° 19' 24.89"	77° 6' 42.46"
4	2248616.893	720317.643	20° 19' 22.17"	77° 6' 36.55"
5	2248653.183	720164.1739	20° 19' 23.41"	77° 6' 31.27"

Sr. No	District	Taluka	Village	Compartment No.	Survey No. / Gutt No.	Chainage	Affected Gutt No. area in Sq.m	Affected Gutt No. area in Ha	Forest Area in Sq.m	Forest Area in Ha
1	Washim	Malegaon	Kawaddari	106	10	220+872 to 221+400	67900.00	6.79	235100.00	23.51
2				105	66	221+700 to 224+600	2000.00	0.20		
3				103	87,10		165200.00	16.52		

VILLAGE :- KAWADDARI
TALUKA :- MALEGAON
DISTRICT :- WASHIM
SCALE :- 1:10,000



LEGEND:	
	AFFECTED FOREST
	COMPARTMENT BOUNDARY
	CENTER LINE
	CARRIAGEWAY
	PROPOSED ROW
	VILLAGE BOUNDARY

NO.	DATE	REVISION	DRAWN	CHECKED	APPROVED

SCALE:
1:10000

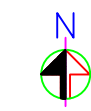
OWNER CLIENT:
MAHARASHTRA STATE ROAD
DEVELOPMENT CORPORATION LTD.

DESIGN CONSULTANT:
STUP Consultants Pvt. Ltd.
In joint venture with
Ernest & Young LLP

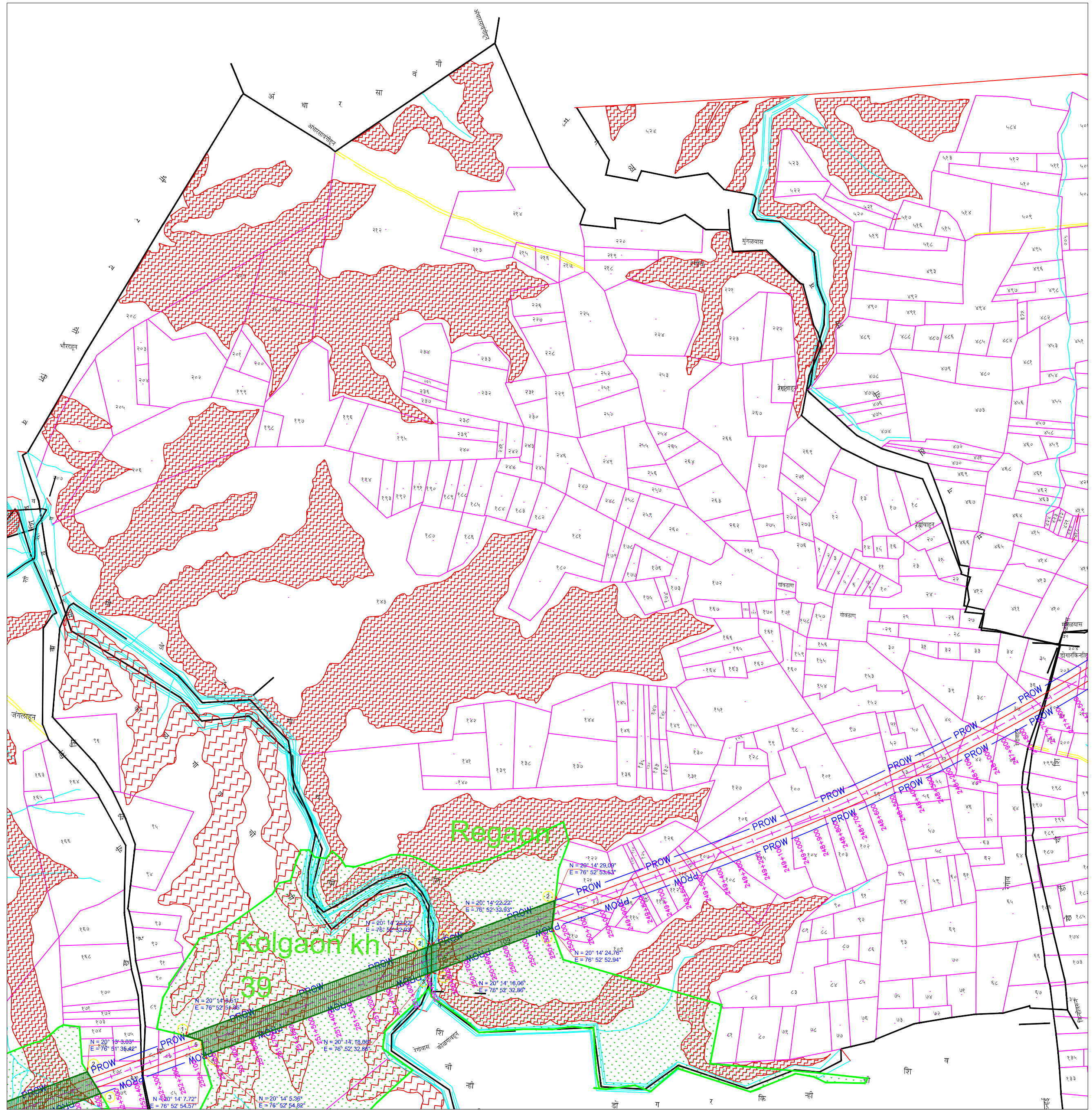
PROJECT:
CONSULTANCY SERVICES FOR PREPARATION OF
FEASIBILITY STUDY AND DETAILED PROJECT REPORT OF
ACCESS CONTROLLED NAGPUR - MUMBAI
SUPER COMMUNICATION EXPRESSWAY
PKG-II - AMRAVATI REVENUE DIVISION.

TITLE:
GEO REFERENCE MAP WITH
COMPARTMENT BOUNDARY
AT CH. 220+872 to 224+600
(VILLAGE - KAWADDARI)

PURPOSE OF ISSUE		FOR APPROVAL	
DRG. NO.	8200-00/E/HD-0828 (R0)	DRAWN	KSP
DATE	25.11.16	CHECKED	APPROVED
DESIGN	SLS	DBJ	MKG



VILLAGE :- REGAON
TALUKA :- MALEGAON
DISTRICT :- WASHIM
SCALE :- 1:10,000



REGAON (CH 250+200 to 250+900)				
Sr.No	Northing	Easting	Latitude	Longitude
1	2239096.416	695948.4623	20° 14' 22.22"	76° 52' 32.93"
2	2239314.554	696543.9575	20° 14' 29.09"	76° 52' 53.53"
3	2239181.06	696528.4093	20° 14' 24.76"	76° 52' 52.94"
4	2238968.378	695947.8049	20° 14' 18.06"	76° 52' 32.86"

Sr. No	District	Taluka	Village	Compartment No.	Survey No. / Gutt No.	Chainage	Forest Area in Sq.m	Forest Area in Ha
1	Washim	Malegaon	Regaon	39	109	250+200 to 250+900	77200.00	7.72

LEGEND:	
	AFFECTED FOREST
	COMPARTMENT BOUNDARY
	CENTER LINE
	CARRIAGEWAY
	PROPOSED ROW
	VILLAGE BOUNDARY



NO.	DATE	REVISION	DRAWN	CHECKED	APPROVED

SCALE:
1:10000

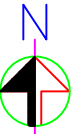
OWNER CLIENT:
 MAHARASHTRA STATE ROAD DEVELOPMENT CORPORATION LTD.

DESIGN CONSULTANT:
 STUP Consultants Pvt. Ltd.
In joint venture with Ernest & Young LLP

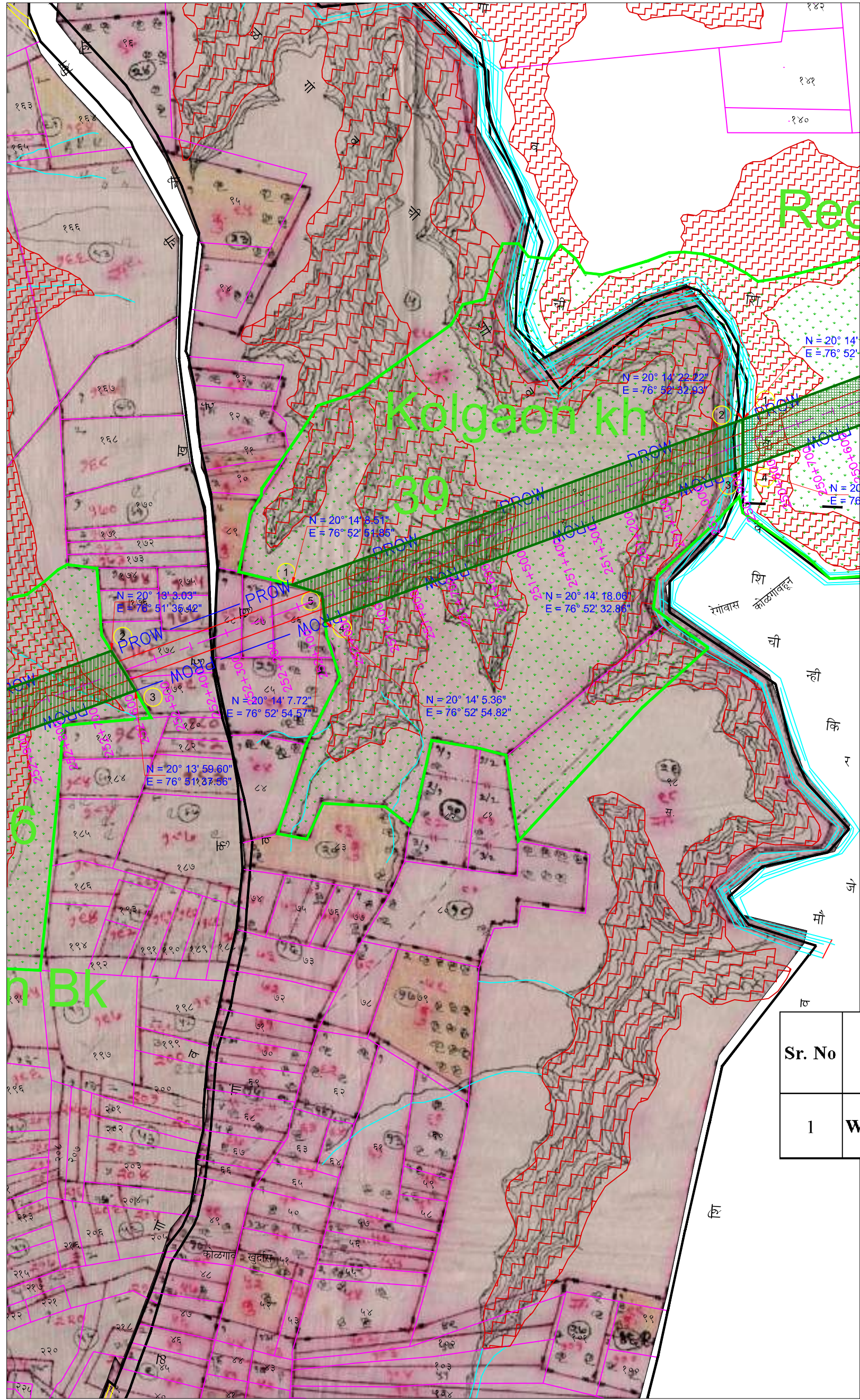
PROJECT:
CONSULTANCY SERVICES FOR PREPARATION OF FEASIBILITY STUDY AND DETAILED PROJECT REPORT OF ACCESS CONTROLLED NAGPUR - MUMBAI SUPER COMMUNICATION EXPRESSWAY PKG-II - AMRAVATI REVENUE DIVISION.

TITLE:
GEO REFERENCE MAP WITH COMPARTMENT BOUNDARY AT CH. 250+200 to 250+900 (VILLAGE - REGAON)

PURPOSE OF ISSUE		FOR APPROVAL
DRG. NO. 8200-00/E/HD-0829 (R0)		
DATE : 25.11.16		DRAWN KSP
DESIGN	CHECKED	APPROVED
SLS	DBJ	MKG



VILLAGE : - KOLGAON KH
TALUKA : - MALEGAON
DISTRICT : - WASHIM
SCALE :- 1:10,000



KOLGAON KH (CH 250+900 to 252+100)				
Sr.No	Northing	Easting	Latitude	Longitude
1	2238661.412	694760.9414	20° 14' 8.51"	76° 52' 51.85"
2	2239096.416	695948.4623	20° 14' 22.22"	76° 52' 32.93"
3	2238968.378	695947.8049	20° 14' 18.06"	76° 52' 32.86"
4	2238565.529	694848.0643	20° 14' 5.36"	76° 52' 54.82"
5	2238637.744	694840.0691	20° 14' 7.72"	76° 52' 54.57"

Sr. No	District	Taluka	Village	Compartment No.	Survey No. / Gutt No.	Chainage	Forest Area in Sq.m	Forest Area in Ha
1	Washim	Malegaon	Kolgaon Kh	39	97	250+900 to 252+100	137700.00	13.77



LEGEND:	
	AFFECTED FOREST
	COMPARTMENT BOUNDARY
	CENTER LINE
	CARRIAGEWAY
	PROPOSED ROW
	VILLAGE BOUNDARY

NO.	DATE	REVISION	DRAWN	CHECKED	APPROVED

SCALE: 1:10000

OWNER CLIENT:

MAHARASHTRA STATE ROAD DEVELOPMENT CORPORATION LTD.

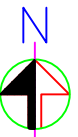
DESIGN CONSULTANT:

STUP Consultants Pvt. Ltd.
In joint venture with Ernest & Young LLP

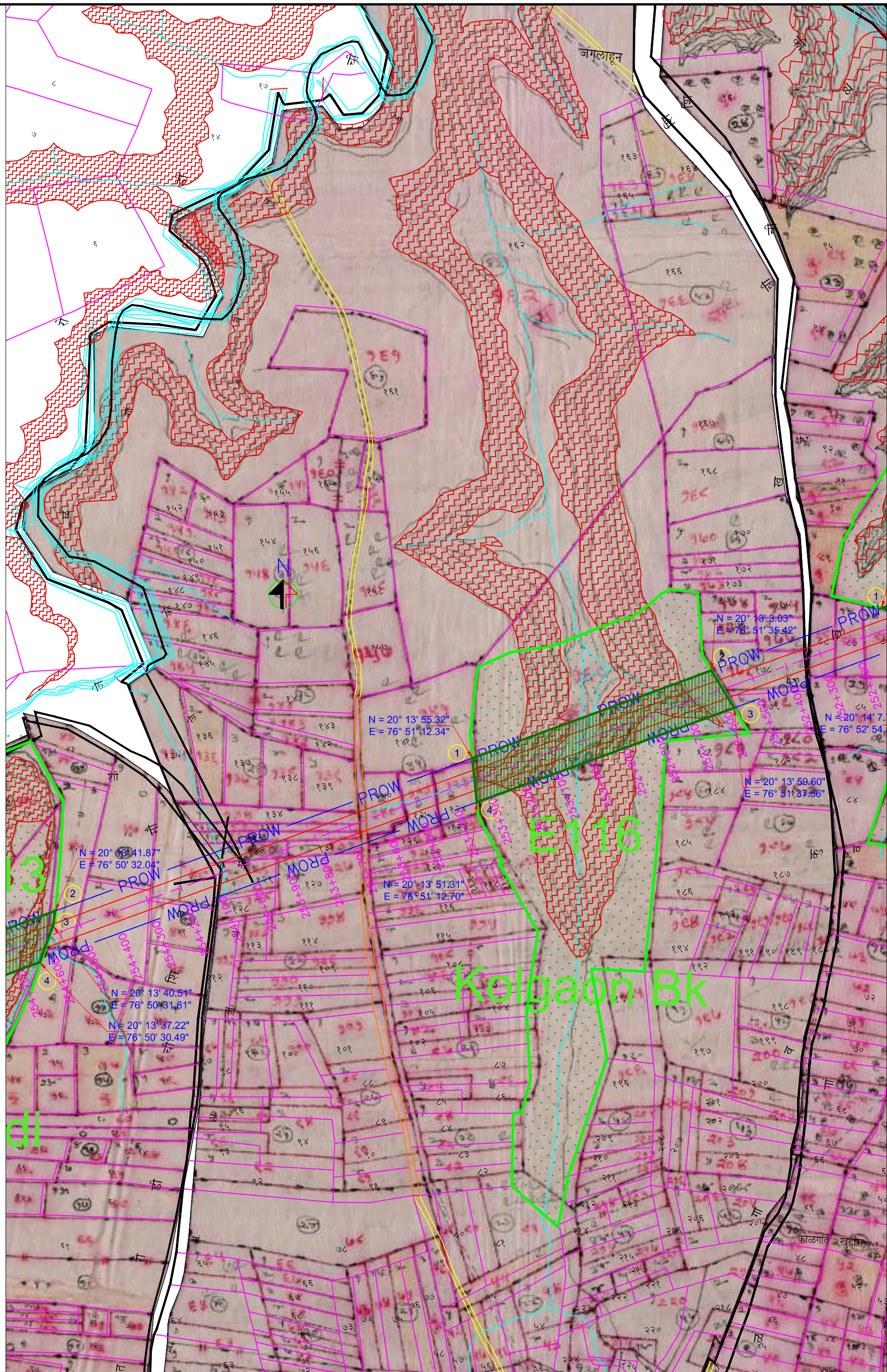
PROJECT:
CONSULTANCY SERVICES FOR PREPARATION OF FEASIBILITY STUDY AND DETAILED PROJECT REPORT OF ACCESS CONTROLLED NAGPUR - MUMBAI SUPER COMMUNICATION EXPRESSWAY PKG-II - AMRAVATI REVENUE DIVISION.

TITLE:
GEO REFERENCE MAP WITH COMPARTMENT BOUNDARY AT CH. 250+900 to 252+100 (VILLAGE - KOLGAON KH)

PURPOSE OF ISSUE		FOR APPROVAL	
DRG. NO.	8200-00/E/HD-0830 (R0)	DATE : 25.11.16	DRAWN KSP
DESIGN	CHECKED	APPROVED	
SLS	DBJ	MKG	



VILLAGE :- KOLGAON BK
TALUKA :- MALEGAON
DISTRICT :- WASHIM
SCALE :- 1:10,000



KOLGAON BK (CH 252+577 to 253+342)				
Sr.No	Northing	Easting	Latitude	Longitude
1	2238242.895	693618.4284	20° 13' 55.32"	76° 51' 12.34"
2	2238487.319	694285.6823	20° 13' 3.03"	76° 51' 35.42"
3	2238382.752	694349.1000	20° 13' 59.60"	76° 51' 37.56"
4	2238119.527	693630.5209	20° 13' 51.31"	76° 51' 12.70"

Sr. No	District	Taluka	Village	Compartment No.	Survey No. / Gutt No.	Chainage	Forest Area in Sq.m	Forest Area in Ha
1	Washim	Malegaon	Kolgaon Bk	E116	169	252+577 to 253+100	86700.00	8.67



LEGEND:	
	AFFECTED FOREST
	COMPARTMENT BOUNDARY
	CENTER LINE
	CARRIAGEWAY
	PROPOSED ROW
	VILLAGE BOUNDARY

NO.	DATE	REVISION	DRAWN	CHECKED	APPROVED

SCALE:	1:10000
--------	---------

OWNER CLIENT:	MAHARASHTRA STATE ROAD DEVELOPMENT CORPORATION LTD.
---------------	---

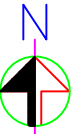
DESIGN CONSULTANT:	STUP Consultants Pvt. Ltd. In joint venture with Ernest & Young LLP
--------------------	--

PROJECT:	CONSULTANCY SERVICES FOR PREPARATION OF FEASIBILITY STUDY AND DETAILED PROJECT REPORT OF ACCESS CONTROLLED NAGPUR - MUMBAI SUPER COMMUNICATION EXPRESSWAY PKG-II - AMRAVATI REVENUE DIVISION.
----------	---

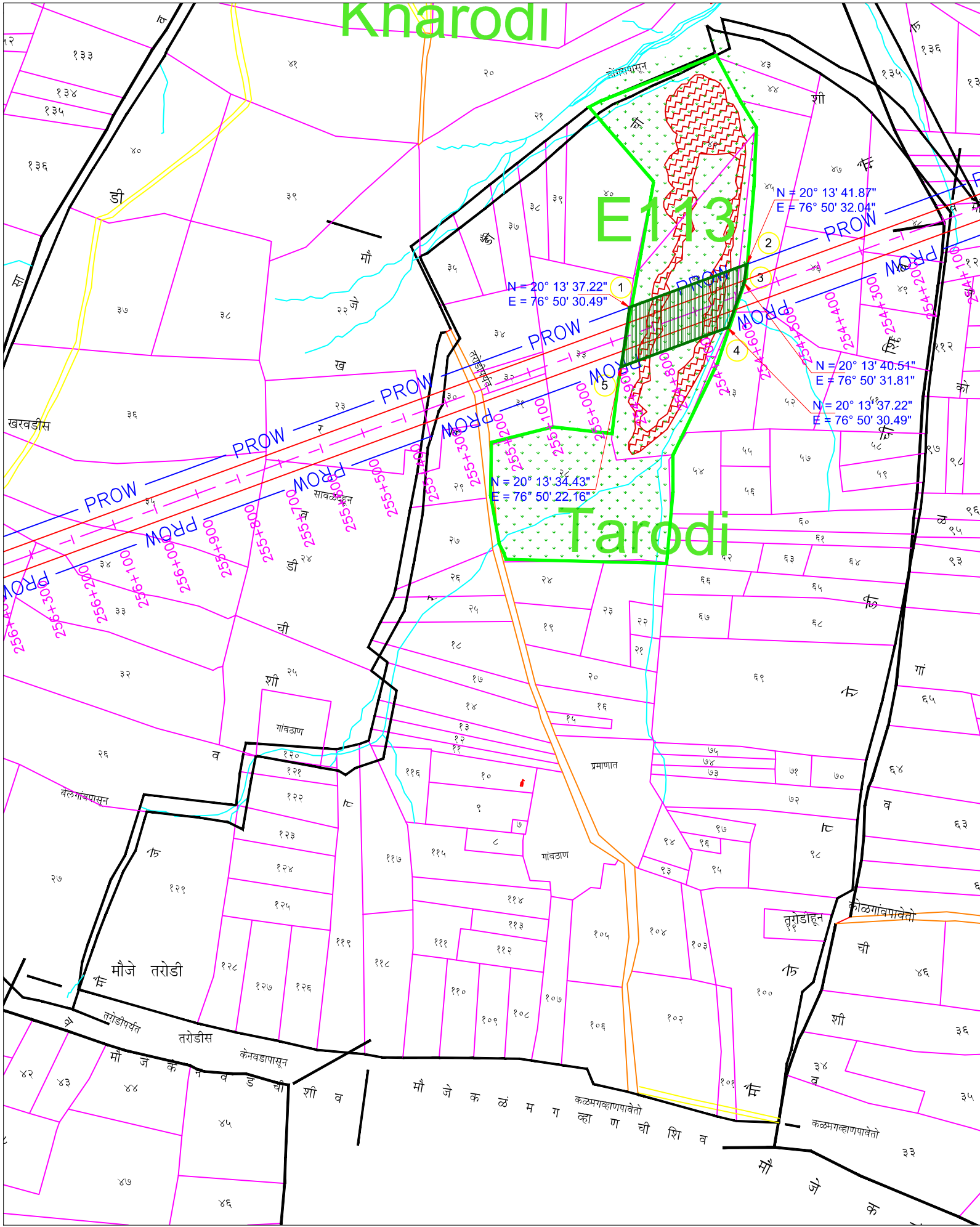
TITLE:	GEO REFERENCE MAP WITH COMPARTMENT BOUNDARY AT CH. 252+577 to 253+342 (VILLAGE - KOLGAON BK)
--------	--

TITLE:	GEO REFERENCE MAP WITH COMPARTMENT BOUNDARY AT CH. 252+577 to 253+342 (VILLAGE - KOLGAON BK)
--------	---

DESIGN	CHECKED	APPROVED
SLS	DBJ	MKG

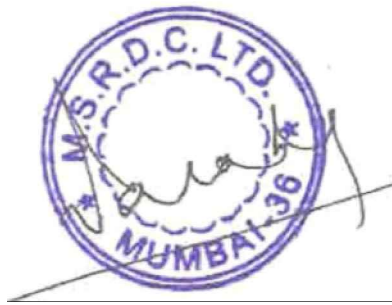


VILLAGE : - TARODI
TALUKA : - MALEGAON
DISTRICT : - WASHIM
SCALE :- 1:10,000



TARODI (CH 254+550 to 254+900)				
Sr.No	Northing	Easting	Latitude	Longitude
1	2237672.497	692410.1677	20° 13' 37.22"	76° 50' 30.49"
2	2237816.092	692453.293	20° 13' 41.87"	76° 50' 32.04"
3	2237774.100	692447.100	20° 13' 40.51"	76° 50' 31.81"
4	2237672.497	692410.1677	20° 13' 37.22"	76° 50' 30.49"
5	2237584.215	692169.1675	20° 13' 34.43"	76° 50' 22.16"

Sr. No	District	Taluka	Village	Compartment No.	Survey No. / Gutt No.	Chainage	Forest Area in Sq.m	Forest Area in Ha
1	Washim	Malegaon	Tarodi	E113	41	254+550 to 254+900	32300.00	3.23



LEGEND:	
	AFFECTED FOREST
	COMPARTMENT BOUNDARY
	CENTER LINE
	CARRIAGEWAY
	PROPOSED ROW
	VILLAGE BOUNDARY

NO.	DATE	REVISION	DRAWN	CHECKED	APPROVED

SCALE:	1:10000
--------	---------

--

OWNER CLIENT:
MAHARASHTRA STATE ROAD DEVELOPMENT CORPORATION LTD.

DESIGN CONSULTANT:
STUP Consultants Pvt. Ltd. In joint venture with Ernest & Young LLP

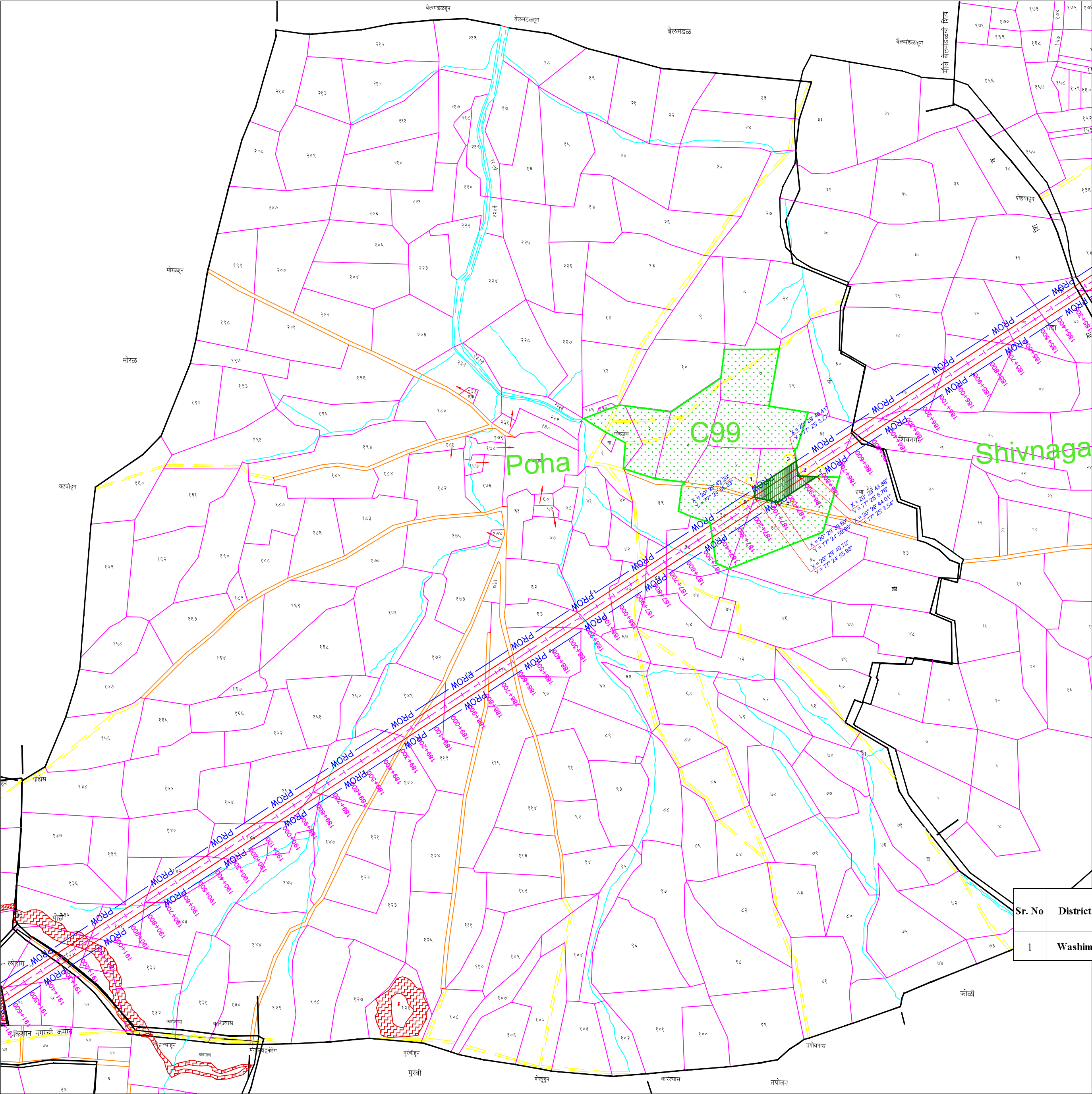
PROJECT:
CONSULTANCY SERVICES FOR PREPARATION OF FEASIBILITY STUDY AND DETAILED PROJECT REPORT OF ACCESS CONTROLLED NAGPUR - MUMBAI SUPER COMMUNICATION EXPRESSWAY PKG-II - AMRAVATI REVENUE DIVISION.

TITLE:
GEO REFERENCE MAP WITH COMPARTMENT BOUNDARY AT CH. 254+550 to 254+900 (VILLAGE - TARODI)

PURPOSE OF ISSUE	FOR APPROVAL
DRG. NO. 8200-00/E/HD-0832 (RO)	
DATE : 25.11.16	DRAWN KSP
DESIGN SLS	CHECKED DBJ
	APPROVED MKG



VILLAGE :- POHA
TALUKA :- KARANJA
DISTRICT :- WASHIM
SCALE :- 1:10,000



POHA (CH 186+835 to 187+150)				
Sr.No	Northing	Easting	Latitude	Longitude
1	2268128.822	751943.9585	20° 29' 42.20"	77° 24' 56.23"
2	2268261.435	752146.1339	20° 29' 46.41"	77° 25' 3.27"
3	2268187.543	752154.9754	20° 29' 44.01"	77° 25' 3.54"
4	2268185.055	752248.4791	20° 29' 43.88"	77° 25' 6.76"
5	2268056.686	752052.7748	20° 29' 39.80"	77° 24' 59.95"
6	2268083.062	751937.4651	20° 29' 40.72"	77° 24' 55.98"

Sr. No	District	Taluka	Village	Compartment No.	Survey No. / Gutt No.	Chainage	Affected area in Sq.m	Forest Area in Ha
1	Washim	Karanja	Poha	C99	5	186+835 to 187+150	26600.00	2.66



LEGEND:	
	AFFECTED FOREST
	COMPARTMENT BOUNDARY
	CENTER LINE
	CARRIAGEWAY
	PROPOSED ROW
	VILLAGE BOUNDARY

NO.	DATE	REVISION	DRAWN	CHECKED	APPROVED

SCALE:
1:10000

OWNER CLIENT:

MAHARASHTRA STATE ROAD
DEVELOPMENT CORPORATION LTD.

DESIGN CONSULTANT:

STUP Consultants Pvt. Ltd.
In joint venture with
Ernest & Young LLP

PROJECT:
CONSULTANCY SERVICES FOR PREPARATION OF
FEASIBILITY STUDY AND DETAILED PROJECT REPORT OF
ACCESS CONTROLLED NAGPUR - MUMBAI
SUPER COMMUNICATION EXPRESSWAY
PKG-II - AMRAVATI REVENUE DIVISION.

TITLE:
GEO REFERENCE MAP WITH
COMPARTMENT BOUNDARY
AT CH. 186+835 to 187+150
(VILLAGE - POHA)

PURPOSE OF ISSUE		FOR APPROVAL
DRG. NO. 8200-00/E/HD-0833 (R0)		KSP
DATE : 29.11.2016		DESIGN
SLS	DBJ	APPROVED