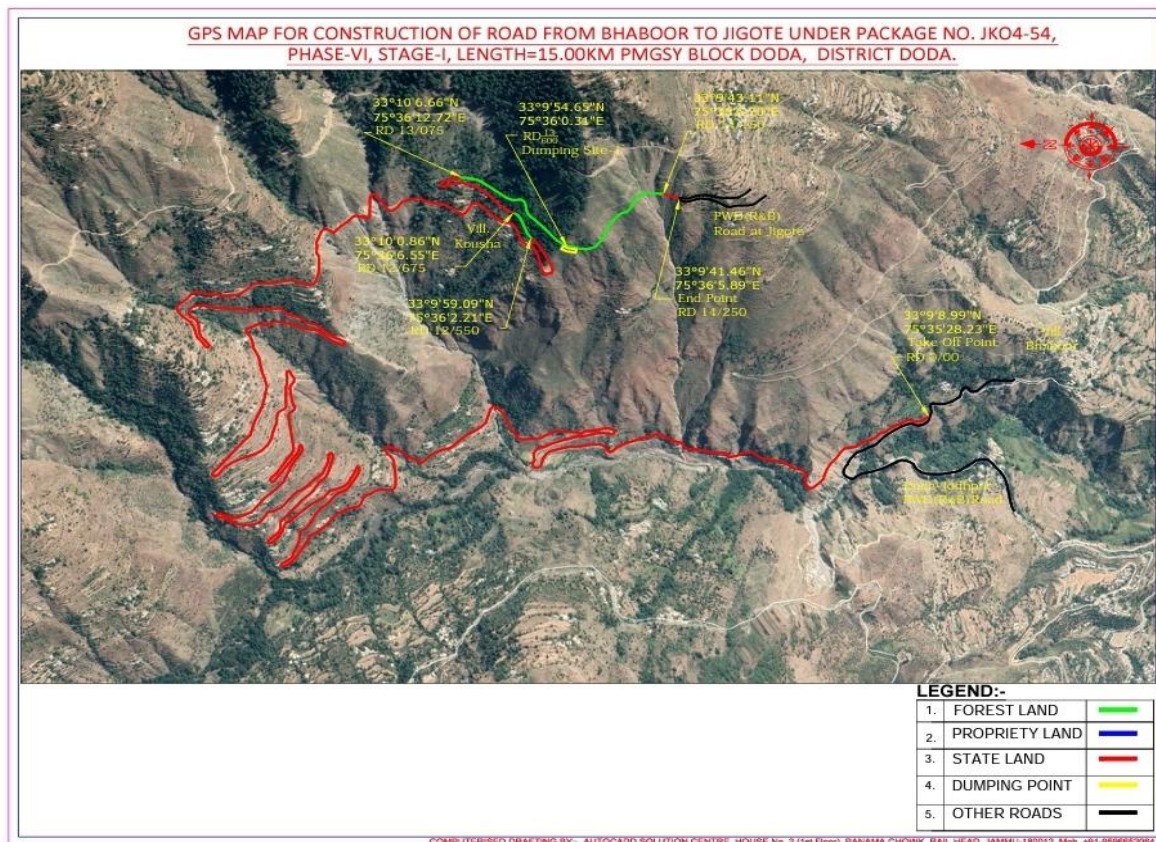


# LAYOUT PLAN OF MUCK DUMPING SITES




## IMPLEMENTATION OF ENGINEERING MEASURES AT MUCK DUMPING SITES

It has been observed that after disposal of muck, it creates problem as it is susceptible to scattering unless the muck disposal yards are supported with engineering measures such as protective walls/Gabion walls. All the dumping sites need proper handling to avoid spilling of muck while dumping and in the post dumping stages. All the muck disposal sites have to be developed from the ground level either by providing stone masonry or by gabion structures. Gabion walls will be provided to support disposed muck. In all the muck dumping sites, the muck brought in by dumpers shall be dumped and manually spread and roller compacted in such a way that rock mass is properly stacked behind the Gabions with minimum of voids.

## BUDGETS FOR MUCK DISPOSAL PLAN

An estimate has been made for engineering measures of Muck Disposal Plan at Rs. 2.42 lacs. Proposed Gabion Drawing copy Enclosed.

  
Executive Engineer  
PMGSY Division  
Doda