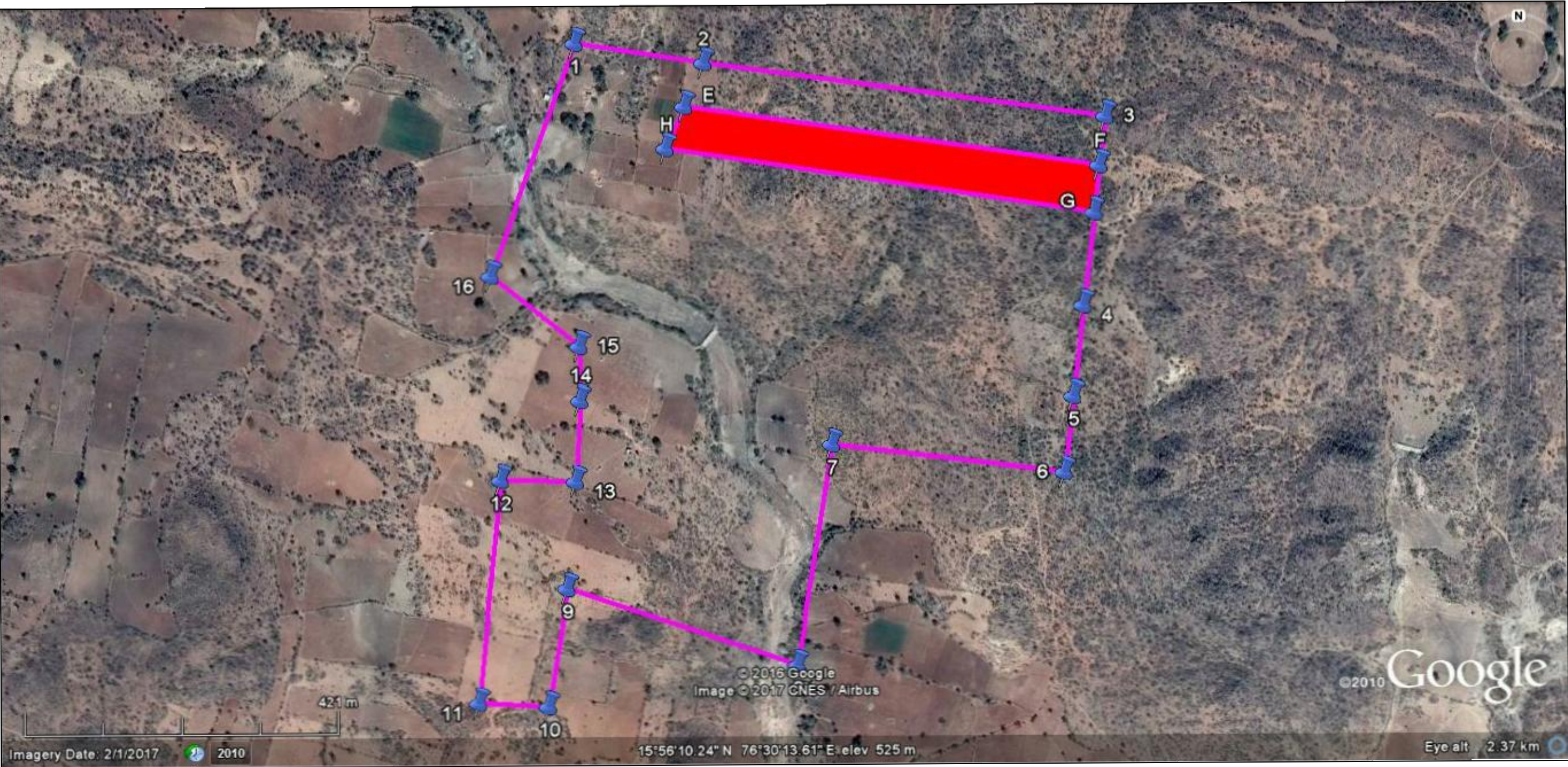

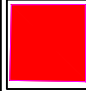


GOOGLE MAP SHOWING THE AREA FOR CA LAND BY M/S JSW STEEL LTD.,
OVER AN EXTENT OF **4.74ha. (11.71Acres.)** IN TIMMAPURA VILLAGE OF LINGASUGUR TALUK, RAICHUR DISTRICT
IN LIEU OF APPROACH ROAD IN ML NO.2366 (**TUNGA IRON ORE MINES**)



Legend

-  Boundary of CA Land 47.78 ha.(118.08 acres) identified by JSW Steel Ltd.
-  Area-4.74 ha.(11.71acres.)earmarked as a CA land in lieu of approach road in ML No.2366 Tunga Iron Ore Mines.

Project Proponent
for JSW Steel Ltd.