

To

Hon PCCF

Aranya Bhavan

Bangalore-18

From

Excutive Engineer

Public Works Port and

Inland Water Transport Department,

Udupi Division, Udupi,

Udupi Taluk & District

PIN-576101

DIVERSION OF 0.808 Ha OF FOREST LAND FOR PROPOSED FOR DIVERSION OF PROPOSED ROAD IN SY.NO 268 OF PADUVARI VILLAGE, BAINDUR RANGE KUNDAPURA FOREST DIVISION.

Honorable Sir,

I Undersigned person applied for Diversion of 0.808 Ha forest land for Diversion of Proposed Road passing through Baidur Rf Extn Block Forest Area for a distance of 2155.00 x 3.75 m=0.808 Ha in Sy.No 268 of Paduvari Veillage Baidur Range Kundapura Forest Division. To undertake to bear the cost of raising and maintenance of compensatory afforstation and other statutory payments as per government norms

Date 12/05/2016

Place – Udupi

Yours faitl:fully

(Excutive Engineer) 12/5

JUSTIFICATION CERTIFICATE

The said location has been selected duly considering the site specificity that Proposed Road passing Through Baindur Rf Extn Block. The Proposed Road width is 3.75 m. The Proposed Road NH 169 to Utthinane IB. So the 3.75 m Black Topping of road width is applied. Length of the Proposed Road 2155.00 m x 3.75 m=0.808 Ha. we have also considered issues related to movement of men and material along with a Existing road Location. The same have been depicted in the land use map enclosed.

Date :- 12-05-2016
Place:- Udupi


(Executive Engineer) 12/5

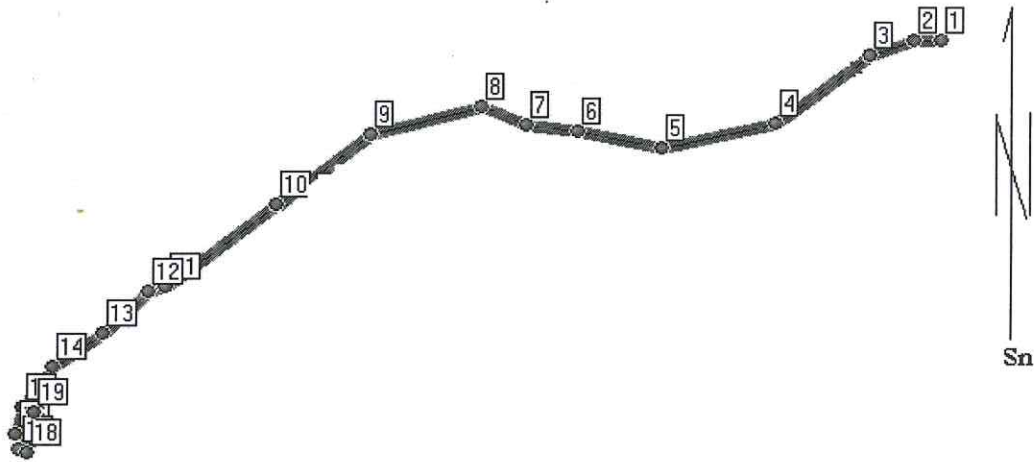
Authorisation Certificate

I Executive Engineer PWD Udupi Divison have applied for the said Area. Hence, my self is authorized.

Date :- 12-05-2016
Place :- Udupi


(Executive Engineer) 12/5

**GPS SKETCH SHOWING THE SURVEYED PROPOSED ROAD PASSING THROUGH
BAINDUR RF EXTN BLOCK SY.NO 268 OF PADUVARI VILLAGE.
TOTAL EXT 2155.00 m x 3.75 m= 0.808 Ha.**



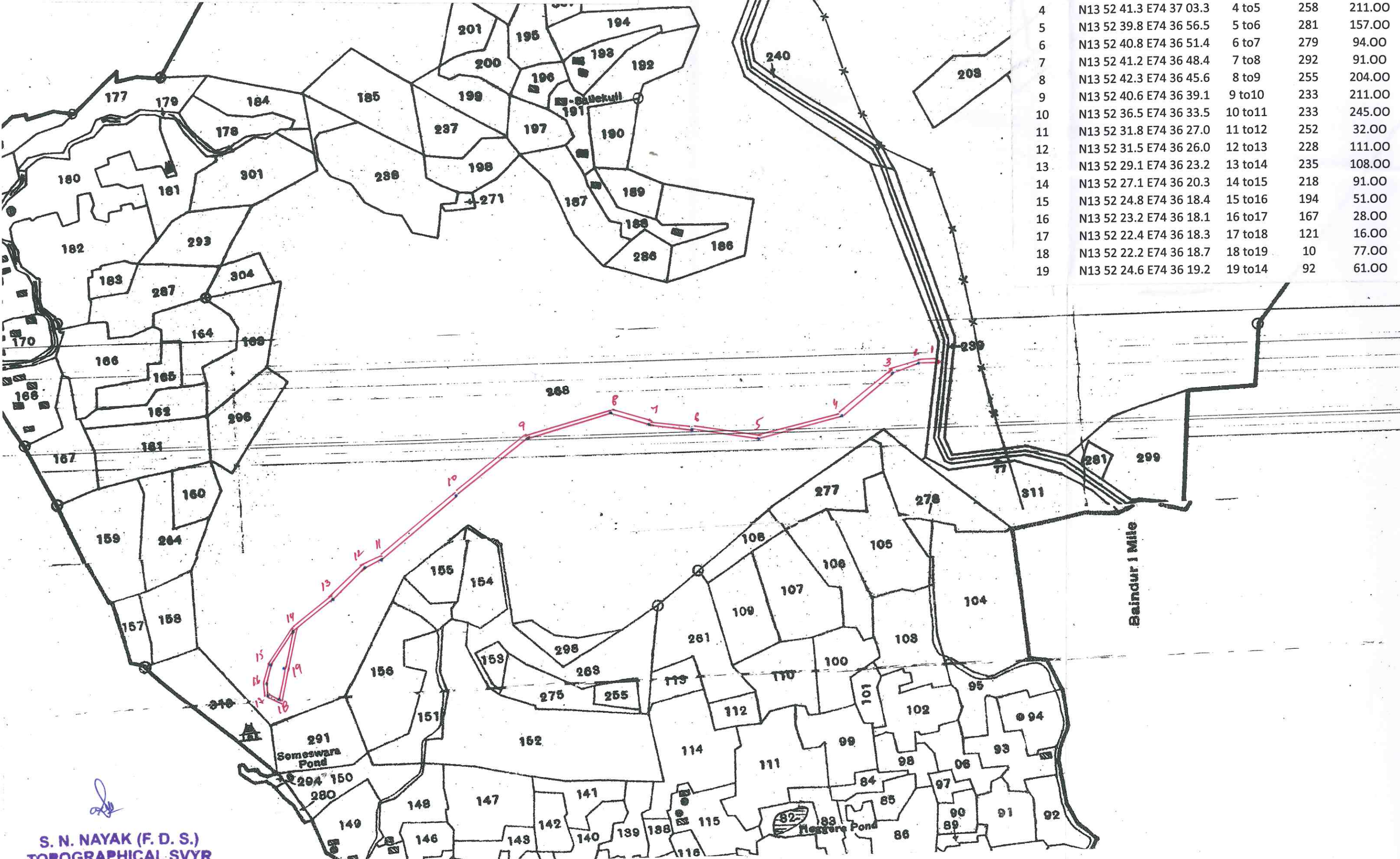
<u>Stn No's</u>	<u>Latitude /Longitude</u>	<u>From-To</u>	<u>Bearing</u>	<u>Distance</u>
1	N13 52 46.2 E74 37 13.1	1 to 2	270	49.00
2	N13 52 46.2 E74 37 11.5	2 to 3	250	83.00
3	N13 52 45.3 E74 37 08.9	3 to 4	234	210.00
4	N13 52 41.3 E74 37 03.3	4 to 5	258	211.00
5	N13 52 39.8 E74 36 56.5	5 to 6	281	157.00
6	N13 52 40.8 E74 36 51.4	6 to 7	279	94.00
7	N13 52 41.2 E74 36 48.4	7 to 8	292	91.00
8	N13 52 42.3 E74 36 45.6	8 to 9	255	204.00
9	N13 52 40.6 E74 36 39.1	9 to 10	233	211.00
10	N13 52 36.5 E74 36 33.5	10 to 11	233	245.00
11	N13 52 31.8 E74 36 27.0	11 to 12	252	32.00
12	N13 52 31.5 E74 36 26.0	12 to 13	228	111.00
13	N13 52 29.1 E74 36 23.2	13 to 14	235	108.00
14	N13 52 27.1 E74 36 20.3	14 to 15	218	91.00
15	N13 52 24.8 E74 36 18.4	15 to 16	194	51.00
16	N13 52 23.2 E74 36 18.1	16 to 17	167	28.00
17	N13 52 22.4 E74 36 18.3	17 to 18	121	16.00
18	N13 52 22.2 E74 36 18.7	18 to 19	10	77.00
19	N13 52 24.6 E74 36 19.2	19 to 14	92	61.00

S. N. NAYAK

**S. N. NAYAK (F. D. S.)
TOPOGRAPHICAL SVYR
(EX. ARMY)**

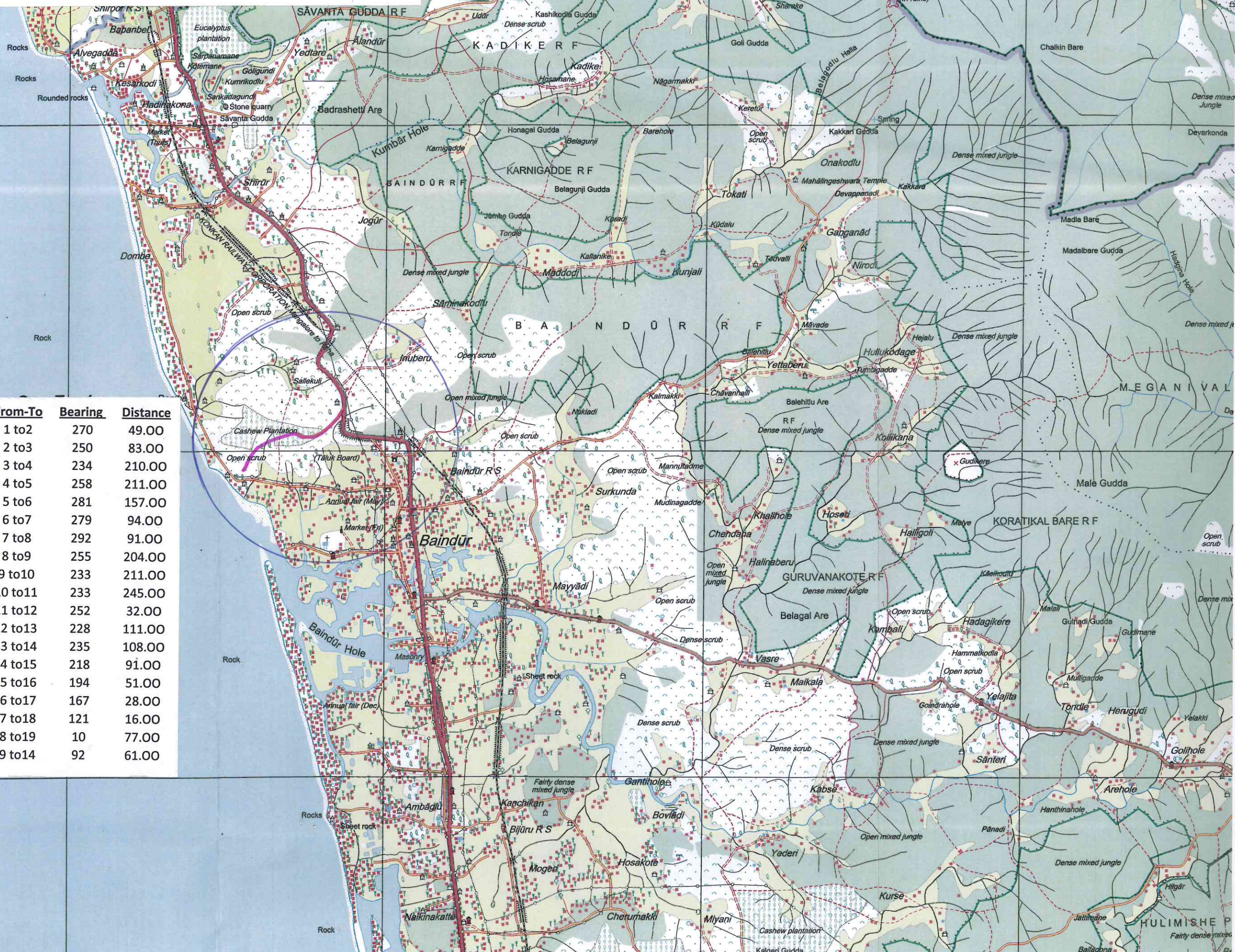
EXTRACT OF PADUVARI VILLAGE MAP SHOWING THE SURVEYED PROPOSED ROAD PASSING THROUGH
 SY.NO 268 OF PADUVARI VILLAGE, BAINBUR RF EXTN BLOCK, KUNDAPURA FOREST DIVISION.
 TOTALEXT 2155.00 m x 3.75 m=0.808 Ha. VILLAGE MAP SCALE 1:7920.

Stn No's	Latitude / Longitude	From-To	Bearing	Distance
1	N13 52 46.2 E74 37 13.1	1 to2	270	49.00
2	N13 52 46.2 E74 37 11.5	2 to3	250	83.00
3	N13 52 45.3 E74 37 08.9	3 to4	234	210.00
4	N13 52 41.3 E74 37 03.3	4 to5	258	211.00
5	N13 52 39.8 E74 36 56.5	5 to6	281	157.00
6	N13 52 40.8 E74 36 51.4	6 to7	279	94.00
7	N13 52 41.2 E74 36 48.4	7 to8	292	91.00
8	N13 52 42.3 E74 36 45.6	8 to9	255	204.00
9	N13 52 40.6 E74 36 39.1	9 to10	233	211.00
10	N13 52 36.5 E74 36 33.5	10 to11	233	245.00
11	N13 52 31.8 E74 36 27.0	11 to12	252	32.00
12	N13 52 31.5 E74 36 26.0	12 to13	228	111.00
13	N13 52 29.1 E74 36 23.2	13 to14	235	108.00
14	N13 52 27.1 E74 36 20.3	14 to15	218	91.00
15	N13 52 24.8 E74 36 18.4	15 to16	194	51.00
16	N13 52 23.2 E74 36 18.1	16 to17	167	28.00
17	N13 52 22.4 E74 36 18.3	17 to18	121	16.00
18	N13 52 22.2 E74 36 18.7	18 to19	10	77.00
19	N13 52 24.6 E74 36 19.2	19 to14	92	61.00



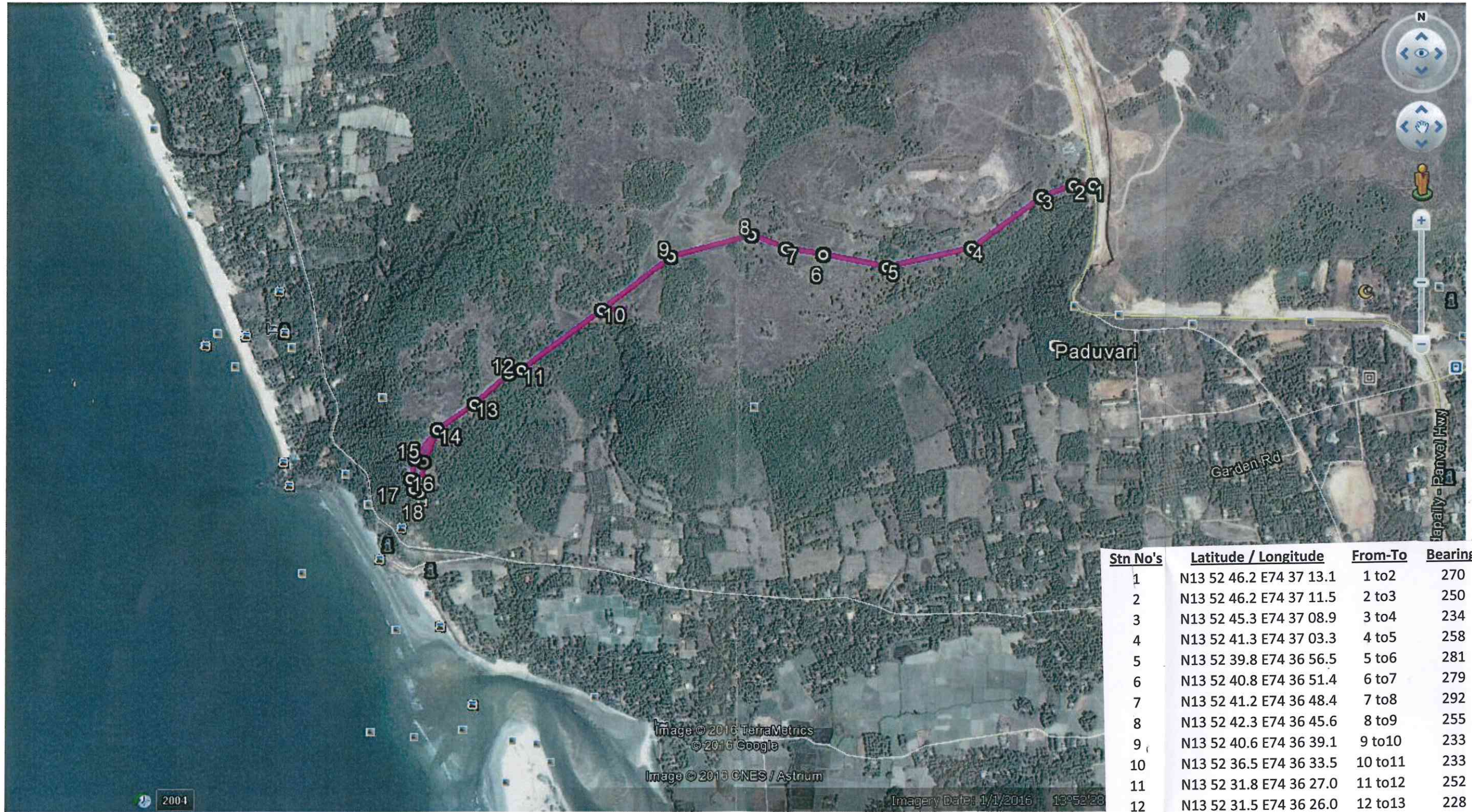
S. N. NAYAK (F. D. S.)
 TOPOGRAPHICAL SVYR
 (EX. ARMY)

EXTRACT OF TOPOSHEET NO 48 K/9 MAP SHOWING THE SURVEYED PROPOSED ROAD PASSING THROUGH SY.NO 268 OF PADUVARI VILLAGE, BAINDUR RF EXTN BLOCK, KUNDAPURA FOREST DIVISION. TOTALEXT 2155.00 m x 3.75 m=0.808 Ha. TOPO SHEET MAP SCALE 1:50,000.




Stn No's	Latitude / Longitude	From-To	Bearing	Distance
1	N13 52 46.2 E74 37 13.1	1 to2	270	49.00
2	N13 52 46.2 E74 37 11.5	2 to3	250	83.00
3	N13 52 45.3 E74 37 08.9	3 to4	234	210.00
4	N13 52 41.3 E74 37 03.3	4 to5	258	211.00
5	N13 52 39.8 E74 36 56.5	5 to6	281	157.00
6	N13 52 40.8 E74 36 51.4	6 to7	279	94.00
7	N13 52 41.2 E74 36 48.4	7 to8	292	91.00
8	N13 52 42.3 E74 36 45.6	8 to9	255	204.00
9	N13 52 40.6 E74 36 39.1	9 to10	233	211.00
10	N13 52 36.5 E74 36 33.5	10 to11	233	245.00
11	N13 52 31.8 E74 36 27.0	11 to12	252	32.00
12	N13 52 31.5 E74 36 26.0	12 to13	228	111.00
13	N13 52 29.1 E74 36 23.2	13 to14	235	108.00
14	N13 52 27.1 E74 36 20.3	14 to15	218	91.00
15	N13 52 24.8 E74 36 18.4	15 to16	194	51.00
16	N13 52 23.2 E74 36 18.1	16 to17	167	28.00
17	N13 52 22.4 E74 36 18.3	17 to18	121	16.00
18	N13 52 22.2 E74 36 18.7	18 to19	10	77.00
19	N13 52 24.6 E74 36 19.2	19 to14	92	61.00

S.N.
S. N. NAYAK (F. D. S.)
TOPOGRAPHICAL SVYR
(EX. ARMY)



Stn No's	Latitude / Longitude	From-To	Bearing	Distance
1	N13 52 46.2 E74 37 13.1	1 to2	270	49.00
2	N13 52 46.2 E74 37 11.5	2 to3	250	83.00
3	N13 52 45.3 E74 37 08.9	3 to4	234	210.00
4	N13 52 41.3 E74 37 03.3	4 to5	258	211.00
5	N13 52 39.8 E74 36 56.5	5 to6	281	157.00
6	N13 52 40.8 E74 36 51.4	6 to7	279	94.00
7	N13 52 41.2 E74 36 48.4	7 to8	292	91.00
8	N13 52 42.3 E74 36 45.6	8 to9	255	204.00
9	N13 52 40.6 E74 36 39.1	9 to10	233	211.00
10	N13 52 36.5 E74 36 33.5	10 to11	233	245.00
11	N13 52 31.8 E74 36 27.0	11 to12	252	32.00
12	N13 52 31.5 E74 36 26.0	12 to13	228	111.00
13	N13 52 29.1 E74 36 23.2	13 to14	235	108.00
14	N13 52 27.1 E74 36 20.3	14 to15	218	91.00
15	N13 52 24.8 E74 36 18.4	15 to16	194	51.00
16	N13 52 23.2 E74 36 18.1	16 to17	167	28.00
17	N13 52 22.4 E74 36 18.3	17 to18	121	16.00
18	N13 52 22.2 E74 36 18.7	18 to19	10	77.00
19	N13 52 24.6 E74 36 19.2	19 to14	92	61.00


S. N. NAYAK (F. D. S.)
TOPOGRAPHICAL SVYR
(EX. ARMY)