

No. F44P16

Scale 1:50,000

F44P11 (64G/11)	F44P15 (64G/15)	F44Q3 (64K/3)
F44P12 (64G/12)	Raipur CHHATTISGARH F44P16 (64G/16)	Mahasamund CHHATTISGARH F44Q4 (64K/4)
F44V9 (64H/9)	F44V13 (64H/13)	F44W1 (64L/1)

1 Durg, CHHATTISGARH.

भारतीय सर्वेक्षण विभाग SURVEY OF INDIA

1st Edition 2009.

Price : Rs. 50/-

CONVENTIONAL SYMBOLS

Express highway, with toll, with bridge, with distance stone	
Roads, metalled, according to importance	
Unmetalled road, Cart-track, Path-track with pass, Foot-path	
Streams with track in bed, underfed, Canal	
Dams, masonry or rock-filled, earthwork, Weir	
Rivers, dry with water channel, with island & rocks, Tidal river	
Submerged rocks, Shoal, Swamp, Reeds	
Wells, lined, unlined, Tube-well, Spring, Tanks, perennial, dry	
Embankments, road or rail, tank, Broken ground	
Railways, broad gauge, double, single with station, under constr.	
Railways, other gauges, double, single with distance station, etc.	
Mineral line or tramway, Kin, Cutting with tunnel	
Contours with sub-features, Rocky slopes, Cliffs	
Sand features (1) flat, (2) dune, (3) permanent, (4) shifting	
Towns or Villages, inhabited, deserted, Fort	
Huts, permanent, temporary, Tower, Antiquities	
Temples, Church, Mosque, Sigh, Tomb, Graves	
Lighthouse, Lightship, Buoy, Light, unlighted, Anchorage	
Mine, View on hills, Grass, Sand, etc.	
Palms, palmry, other Plantain, Conifer, Bamboo, Other trees	
Areas, cultivated, wooded, Surveyed line	
Boundary, international	
state, demarcated, undemarcated	
district, subdivision, taluk or taluk, forest	
Boundary Pillars, surveyed, uncoloured	
Heights, triangulated, station, point, approximate	
Bench-mark, geodetic, tertiary, canal	
Post office, Telegraph office, Overhead tank	
Rest house or inspection bungalow, Circuit house, Police station	
Camping ground, Forest, reserved, protected	
Spotted names, administrative locality or tribal	
Hospital, Dispensary, Veterinary Hospital / Dispensary	
Airplane, Helipad, Tourist site	
Power line, with pylons surveyed, with poles unsurveyed	

REFERENCES

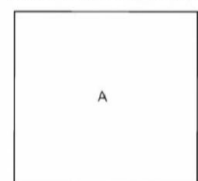
NH-8 National Highway No. 6 S.E.C.R. South East Central Railway

NOTES :-

Heights are in metres and above Indian mean sea level.
Contours are approximate.
A relative height e.g., 30, represents the approximate height, in metres, between the top and bottom of a steep slope.
Tanks shown dry in this area usually contain water from July to December.
Cultivation is periodic and dependent on rainfall.
The kilometre stone numbers along roads, railways and canals are shown in short type, e.g., 20 where the station numbers are shown in long type, e.g., 19.
The triangulated heights and contours in this sheet have not been adjusted to the heights of the spirit-levelled bench-marks and may not be strictly in accordance with them.
Forest boundaries are not clearly demarcated but have been surveyed as pointed out by the local officials on the ground.

COMPILATION INDEX

A. Surveyed during 1970-80. Updated for major details during 2003-04.



Projection - UTM Datum - WGS 84

Magnetic Variation from True North about 3° West in 2005.
(Decreasing by about 1° annually)

1:50,000

500 m to 1 cm
Metres 1000 500 0 1 2 3 Kilometres

CONTOUR INTERVAL 10 METRES

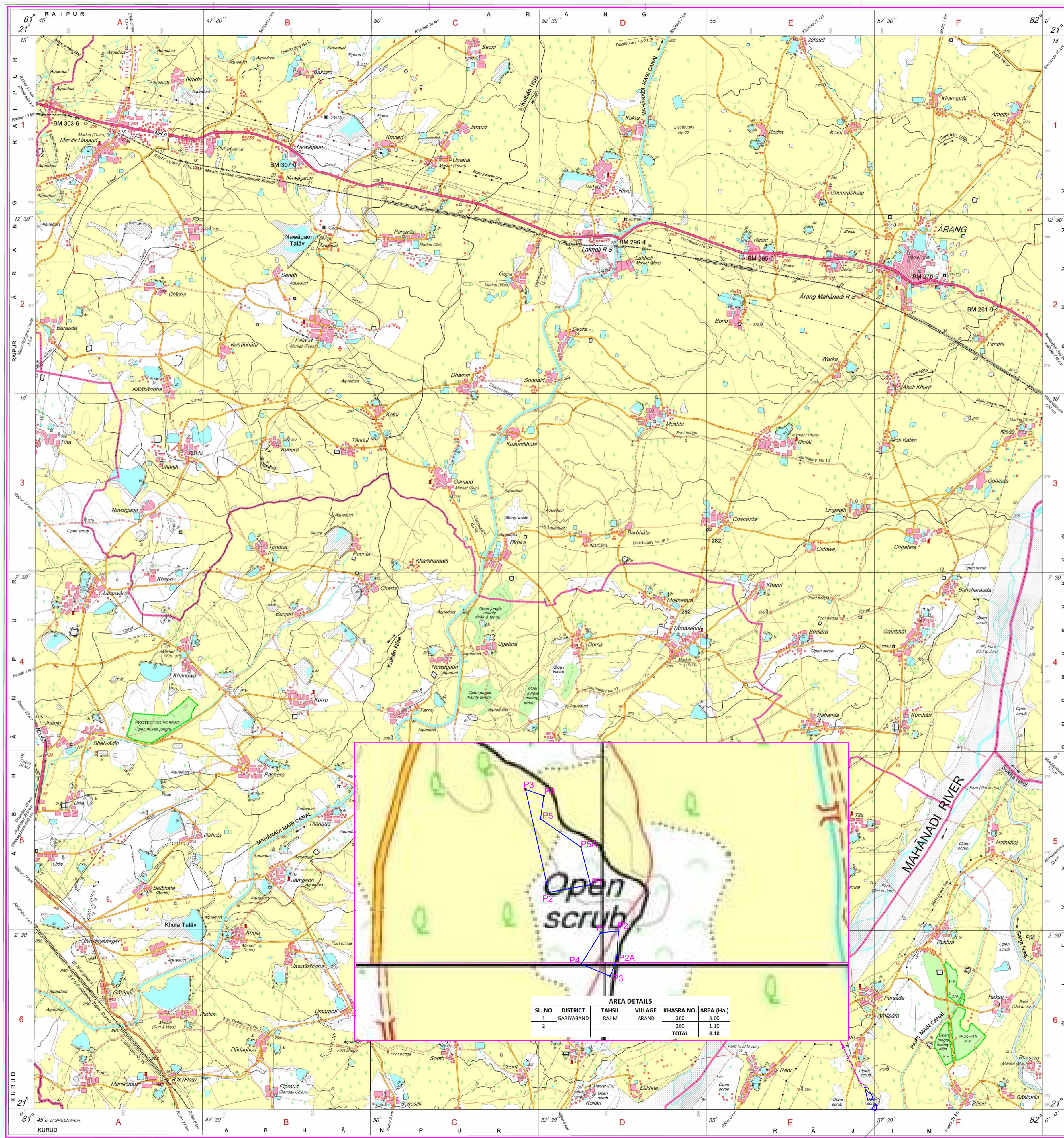
For further details about this map, please contact

Director
Chhattisgarh Geo-Spatial Data Centre
Survey of India, Pachpedi Naka
Raipur.

WEBSITE - www.surveyofindia.gov.in

Reproduction in whole or part by any means is prohibited
without the written permission of Survey of India, the
National Mapping Agency.

GOVERNMENT OF INDIA COPYRIGHT, 2009.



REG. NO. WPS 0750 (Chhattisgarh GDC 1:50,000)

भारत के सर्वेक्षण के अधिनियम के अन्तर्गत,
Published Under the direction of Surveyor General of India,
Survey of India, Hattibankala Estate, Post Box No. 37, Dehra Dun-248001 (Uttarakhand),
Department of Science & Technology, Government of India.



Project Manager
Amit Kumar PWD
G.O.R.P. TAWAR

Deputy Survey Officer
Deputy Survey Officer

PRINTED AT THE WESTERN PRINTING GROUP OF SURVEY OF INDIA



No. F44V13
Scale 1:50,000

F44P12 (64G/12)	F44P16 (64G/16)	Mahāsmund CHHATTISGARH F44Q4 (64K/4)
F44V9 (64H/9)	F44V13 (64H/13)	F44W1 (64L/1) Raipur CHHATTISGARH
F44V10 (64H/10)	Dhamtari CHHATTISGARH F44V14 (64H/14)	F44W2 (64L/2)

1 Durg, CHHATTISGARH.
2 Kanker, CHHATTISGARH.

भारतीय सर्वेक्षण विभाग SURVEY OF INDIA

1st Edition 2010.

Price : Rs. 70/-

CONVENTIONAL SYMBOLS

- Express highway with toll with bridge with distance stone
Roads, metalled, according to importance
Roads, double carriageway, according to importance
Unmetalled road, Cart track, Pack track with pass. Foot path
Streams with track in bed, underfed. Canal
Dams: masonry or rock-filled, earthenwork, Weir
River, dry with water channel, with island & rocks. Total river
Swampy area, Shrub, Swamp, Ponds
Wells: lined, unlined, Tube well, Spring, Tanks: perennial, dry
Embankments: road or rail, tank, broken ground
Railways, broad gauge, double, single with station, under constr.
Railways, other gauges, double, single with distance stone, do.
Mineral line or tramway. Kiri. Cutting with tunnel
Contours with sub-features. Rocky slopes, Cliffs
Sand features (1) Flat. (2) Sand hillock (3) Sand (spring)
Towns or Villages: inhabited, deserted, Fort.
Hubs: permanent, temporary, Tower, Antiquities
Temple, Chhatri, Church, Mosque, Ghat, Tomb, Graves
Lighthouse, Lightship, Buoy, Lighted, unlighted, Anchorage
Mine, Vine on trails, Grass, Scrub
Palms, palmrya, other, Plantain, Conifer, Bamboo, Other trees
Areas: cultivated, wooded, Surveyed tree
Boundary, international
state, unoccupied, unoccupied
district, subdivision, tank or lake, forest
Boundary pillars: surveyed, unoccupied
Heights, triangulated station, point, approximate
Bench-mark: geodetic, tertiary, canal
Post office, Telegraph office, Overhead tank
Rest house or inspection bungalow, Circuit house, Police station
Camping ground, Forest reserved, protected
Spaced names: administrative, locality or tribal
Hospital, Dispensary, Veterinary hospital / Dispensary
Aerodrome, heliport, Tourist site
Power line with pylons surveyed, with poles unsurveyed

REFERENCES

PWD: Public Works Department. SECR: South East Central Railway.

NOTES :-

Heights are in metres and above Indian mean sea level.
Contours are approximate.
A relative height, e.g., 2r, represents the approximate height, in metres, between the top and bottom of a steep slope.
Tanks, shown dry, in this area usually contain water from July to December.
Tube-wells are numerous throughout the sheet, only the important ones have been shown.
Unmetalled roads and cart tracks in this sheet are generally metable in dry season. Permission to use those along canals is required from irrigation authorities.

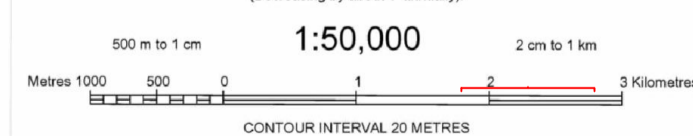
COMPILATION INDEX

A. Surveyed during 1976-77. Updated for major details during 2003-04.



Projection - UTM Datum - WGS 84

Magnetic Variation from True North about 1° West in 2005.
(Decreasing by about 1° annually)



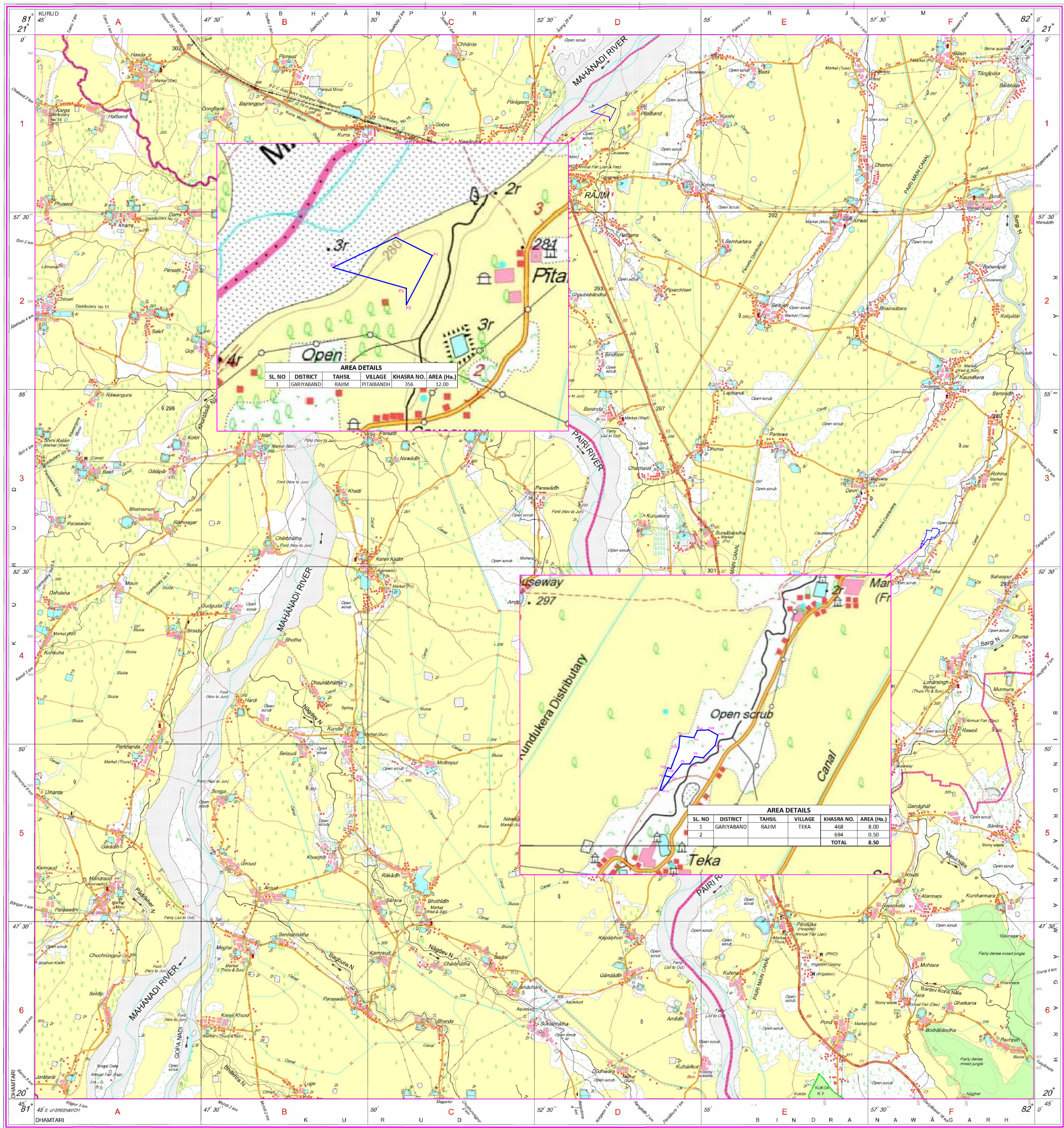
CONTOUR INTERVAL 20 METRES

For further details about this map, please contact
Director
Chhattisgarh Geo-Spatial Data Centre
Survey of India, Pachpedi Naka
Raipur.

WEBSITE - www.surveyofindia.gov.in

Reproduction in whole or part by any means is prohibited
without the written permission of Survey of India, the
National Mapping Agency.

GOVERNMENT OF INDIA COPYRIGHT, 2010.



SL. NO.	DISTRICT	TAHSIL	VILLAGE	KHASRA NO.	AREA (Ha.)
1	GARIYABAND	RAJIM	PITABANDH	356	12.00

SL. NO.	DISTRICT	TAHSIL	VILLAGE	KHASRA NO.	AREA (Ha.)
1	GARIYABAND	RAJIM	TEKA	458	8.00
2				694	0.50
				TOTAL	8.50

भारत के सर्वेक्षण विभाग द्वारा तैयार, प्रकाशित, और प्रसारित।
Published under the direction of: Swarna Subba Rao, B.E., Surveyor General of India,
Survey of India, Hattibari Estate, Post Box No. 37, Dabra Dm-48601 (Uttarakhand),
Department of Science & Technology, Government of India.

PRINTED AT THE SOUTHERN PRINTING GROUP OF SURVEY OF INDIA.



Project Manager
AGU Project PWD
C.O.R.P. RAIPUR

Divisional Forest Officer
Gajaband Division Garaband