

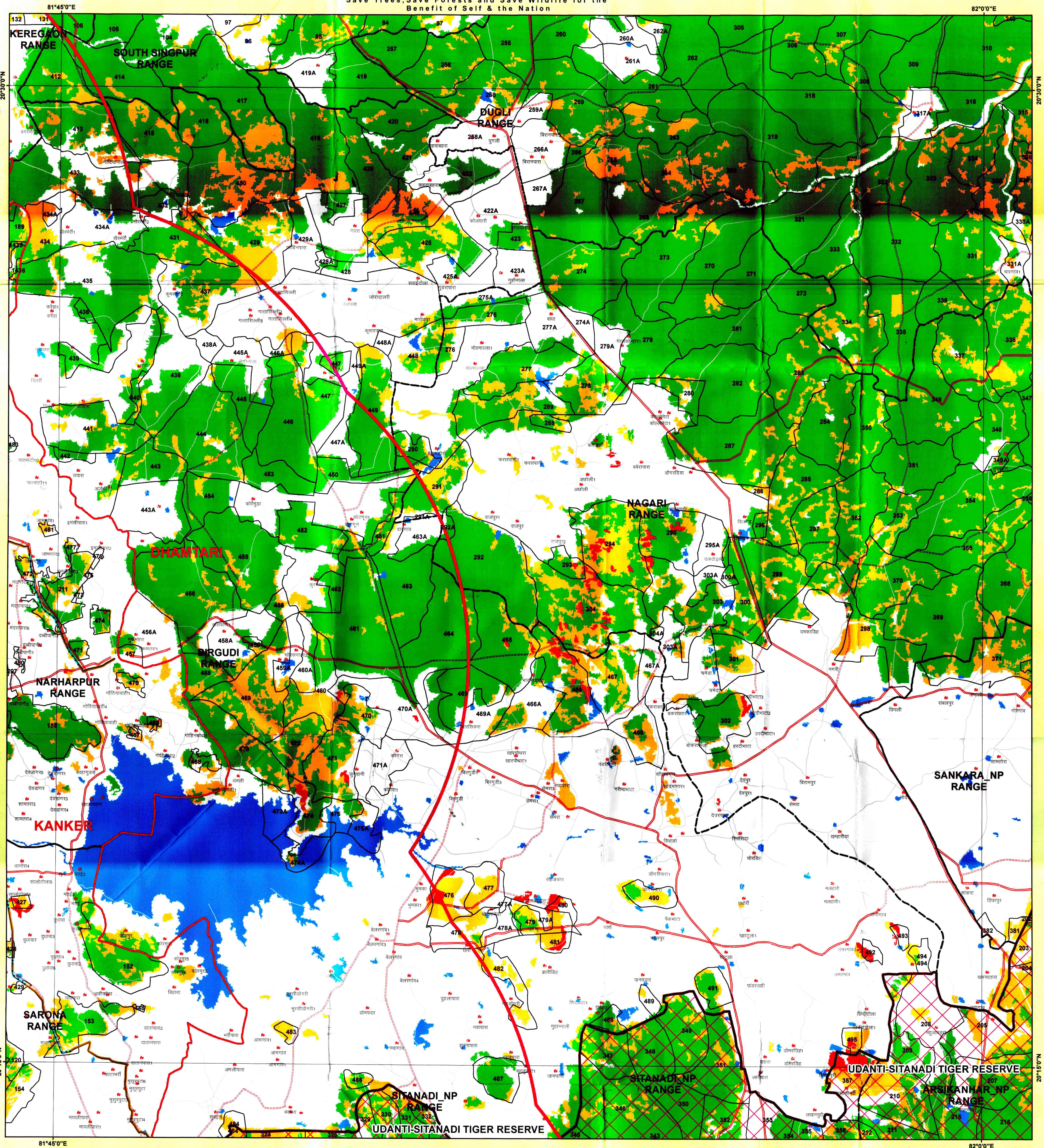
Chhattisgarh Forest Department

Forest Cover Map

Sheet. No. 64 H 15

Save Trees, Save Forests and Save Wildlife for the
Benefit of Self & the Nation

TOPOSHEET NO. 64 H 15



LEGEND

- TOWN / VILLAGE
- DGPS Points
- Road Corridor
- Railway Line
- ROAD_TYPE
 - Cart Track
 - Metalled Road
 - UnMetalled Road
 - Proposed_Forest_Diversion_Area
 - Non_Forest_Area
 - 10_KM_Buffer_Dissolve
 - Procted Area
- Forest Compartment Boundary
- Forest Range Boundary
- Division
- Forest Cover
 - MDF
 - NON FOREST
 - OPEN FOREST
 - SCRUB
 - VDF
 - WATER
 - CGGrid_15m_region

1:50,000

0 0.5 1 2 3 4 Km

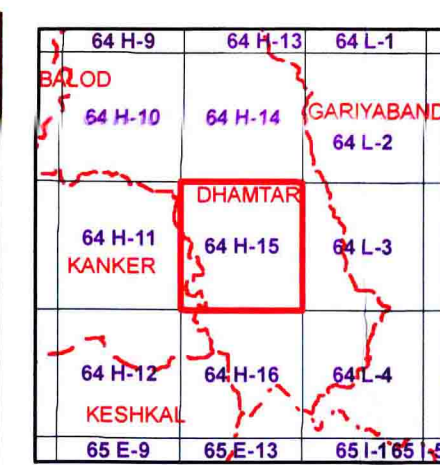
MAP PREPARED FOR:-

GENERAL MANAGER,
JIO DIGITAL FIBRE PRIVATE LIMITED,
4TH FLOOR, OFFICE NO.- 401-405,
AMBUJA MALL, RAIPUR (C.G.)

REG.No. :- FP/CG/OFC/87496/2020

Diversion of forest land for non-forest purpose under Forest Conservation Act, 1980
Proposed for Jio Digital Fibre Private Ltd., Raipur Laying of Optical Fibre Cable (OFC)
line in Kanker Forest Division under Chhattisgarh Sanchar Kranti Yojana (SKY), Area-
2.119 ha.

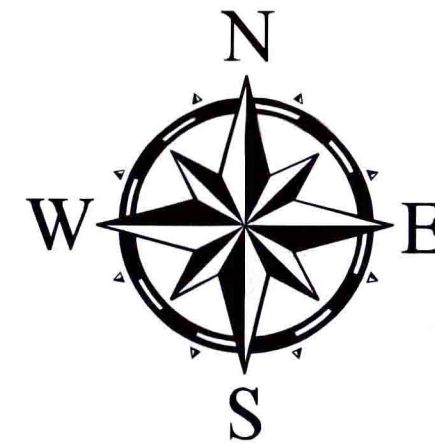
Note :- Shapefile provided by user agencies.



Sheet to Index

Data Source:- 1. Compartment Boundary from Stock Map
2. Forest Cover Based on Digital Interpretation of Data Period Oct 2017 to
Dec 2017 USS-II from Resourceat-2 and IRS-P6 (Resourceat-I)
FSI Report 2019.
3. General Features are based on SOI Digital Data (Scale 1: 50,000)
and Chhattisgarh GeoDatabase.

Source:- FOREST SURVEY OF INDIA FOREST COVER CLASSIFICATION SCHEME.
Very Dense Forest:- All land with tree cover (including Mangrove
cover) of canopy density of 70 % and above.
Moderately Dense Forest:- All land with tree cover (including
Mangrove Cover) of canopy density between 40% and 70% above.
Open Forest:- All land with tree cover (including Mangrove Cover)
of canopy density between 10-40%.
Scrub:- All forest lands with poor tree growth mainly of small or
stunted trees having canopy density less than 10%.
Non Forest:- Any Area not included in the above classes.



SCALE 1:50000

TOPOSHEET NO. 64 H 15

NOT FOR EXPORT

Disclaimer:- The Map provided is subject to the best of the available information and is not a guarantee of accuracy. The user agency is advised to use the features of map subject to prior authentication & supervision by the authorized person of the concerned forest division. The FMIS division shall not be responsible for any complications (Legal or otherwise), arising out of this maps.



Prepared and Printed by:- GIS Cell,
Forest Management Information System Division, Raipur