

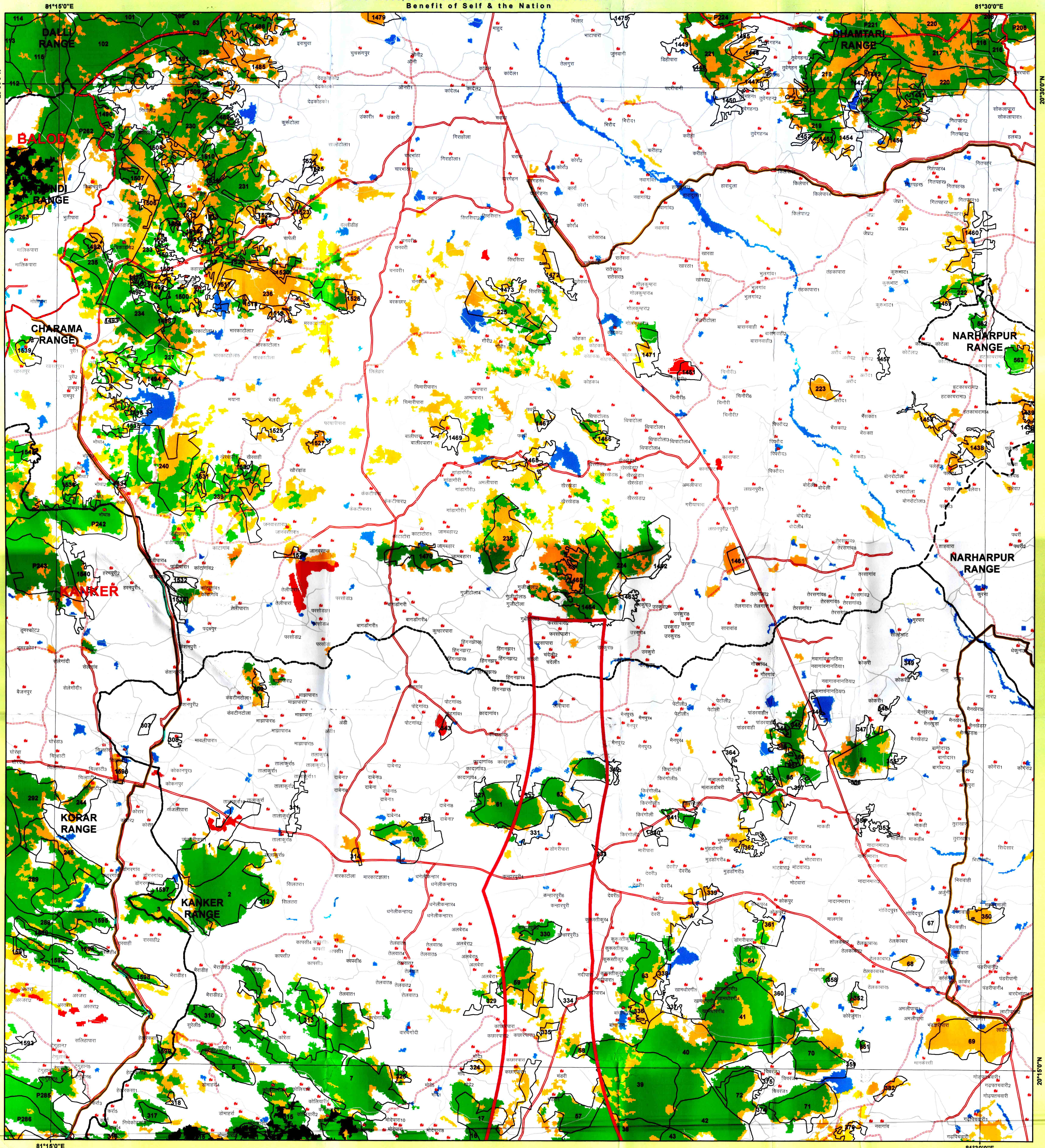
# Chhattisgarh Forest Department

## Forest Cover Map

### Sheet. No. 64 H 07

Save Trees, Save Forests and Save Wildlife for the  
Benefit of Self & the Nation

TOPOSHEET NO. 64 H 07



#### LEGEND

- TOWN / VILLAGE
- DGPS Points
- Road Corridor
- Railway Line
- ROAD\_TYPE
  - Cart Track
  - Metalled Road
  - UnMetalled Road
  - Proposed\_Forest\_Diversion\_Area
  - Non\_Forest\_Area
  - 10\_KM\_Buffer\_Dissolve
  - Procted Area
- Forest Compartment Boundary
- Forest Range Boundary
- Division
- Forest Cover
  - MDF
  - NON FOREST
  - OPEN FOREST
  - SCRUB
  - VDF
  - WATER
  - CGGrid\_15m\_region

1:50,000

0 0.5 1 2 3 4 Km



MAP PREPARED BY  
Programmer/Asst. Programmer  
Name: Thakur Vikram Singh  
Signature: [Signature]

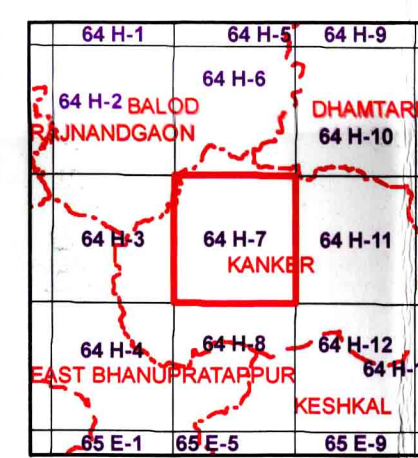
MAP PREPARED FOR:-

GENERAL MANAGER,  
JIO DIGITAL FIBRE PRIVATE LIMITED,  
4TH FLOOR, OFFICE NO. - 401-405,  
AMBUJA MALL, RAIPUR (C.G.)

REG.No. :- FP/CG/OFC/87496/2020

Diversion of forest land for non-forest purpose under Forest Conservation Act, 1980  
Proposed for Jio Digital Fibre Private Ltd., Raipur Laying of Optical Fibre Cable (OFC)  
line in Kanker Forest Division under Chhattisgarh Sanchar Kranti Yojana (SKY), Area-  
2.119 ha.

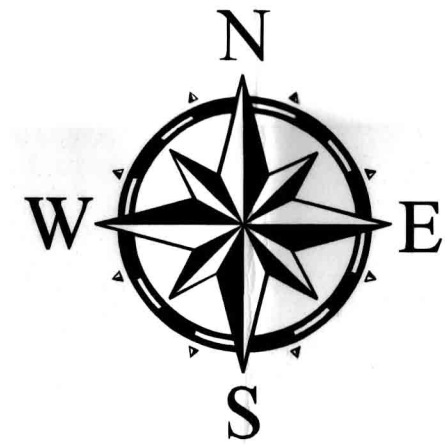
Note :- Shapefile provided by user agencies.



Sheet to Index

Data Source:- 1. Compartment Boundary from Stock Map  
2. Forest Cover Based on Digital Interpretation of Data Period Oct 2017 to  
Dec 2017 LSI-II from ResourceSat-2 and IRS-P6 (ResourceSat-1)  
FSI Report 2018.  
3. General Features are based on SDI Digital Data (Scale 1: 50,000)  
and Chhattisgarh GeoDatabase.

Source:- FOREST SURVEY OF INDIA FOREST COVER CLASSIFICATION SCHEME.  
Very Dense Forest:- All land with tree cover (including Mangrove  
cover) of canopy density of 70 % and above.  
Moderately Dense Forest:- All land with tree cover (including  
Mangrove Cover) of canopy density between 40% and 70% above.  
Open Forest:- All land with tree cover (including Mangrove Cover)  
of canopy density between 10-40%.  
Scrub:- All forest lands with poor tree growth mainly of small  
statured trees having canopy density less than 10%.  
Non Forest:- Any Area not included in the above classes.



SCALE 1:50000

TOPOSHEET NO. 64 H 07

NOT FOR EXPORT

Disclaimer:- The Map provided is subject to inaccuracy in the  
amongst layers associated with incompatibility between different  
platforms of reference (LCC, WGS84 etc) and probable human  
error in digitization. The user agency is advised to use the  
features of map subject to prior authentication & supervision by the  
authorized person of the concerned forest division. The FMS  
division shall not be responsible for any complications (Legal or  
otherwise), arising out of this maps.

Divisional Forest Officer  
Kanker



Prepared and Printed by:- GIS Cell,  
Forest Management Information System Division, Raipur