

CONVENTIONAL SYMBOLS

Express Highway; with toll; with bridge; with distance stone	...	20
Roads, metalled; according to importance	...	7/10
Roads, double carriageway; according to importance
Unmetalled road, Cart-track, Pack-track and pass, Foot-path
Streams: with track in bed; undefined, Canal
Dams: masonry or rock-filled; earthwork, Weir
River: dry with water channel; with island & rocks, Tidal river
Submerged rocks, Shoal, Swamp, Reeds
Wells: lined; unlined, Tube-well, Spring, Tanks: perennial; dry
Embankments: road or rail; tanks, Broken ground
Railways, broad gauge; double; single with station; under constr
Railways, other gauges: double; single with distance stone; do
Mineral line or tramway, Kite, Cutting with tunnel
Contours with sub-features, Rocky slopes, Cliffs
Sand features: (Flat) (Sand-hills) (permanent) (Slideneighbouring)
Towns or Villages: inhabited; deserted, Fort
Huts, permanent; temporary, Tower, Antiquities
Temple, Obelisk, Church, Mosque, Stupa, Tomb, Graves
Lighthouse, Lightship, Buoy; lighted; unlighted, Anchorage
Mine, Vine on trellis, Grass, Scrub
Palms; palmry; other, Plantain, Conifer, Bamboo, Other trees
Areas: cultivated; wooded, Surveyed tree
Boundary, International
state; demarcated; undemarcated
district; subdivision; taluk or taluk; forest
Boundary, Pillars: surveyed; unlocated
Heights, triangulated; station; point; approximate
Bench-mark: geodetic; tertiary; canal
Post office, Telegraph office, Overhead tank
Rest House or Inspection bungalow, Circuit House, Police Station
Camping ground, Forest: reserved; protected
Spaced names: administrative; locality or tribal
Hospital, Dispensary, Veterinary, Hospital / Dispensary
Aerodrome, Helped, Tourist site
Power line: with pylons surveyed; with poles unsurveyed

TOPOSHEET NO-G43F2

REFERENCE

NH 11 B National Highway No. 11 B.

NOTES :-

Heights are in metres and above Indian mean sea level.
Contours are approximate.
A relative height, Δ , represents the approximate height, in metres, between the top and bottom of a steep slope.
The kilometre above numbers along the railway, roads, Pibatti Bindi and canals are shown in slant types, e.g., 'S' whereas milestone numbers are shown in upright types, e.g., '5'.
The common boundaries of Protected Forests and exterior boundary of the Khurda PF have not been shown for want of reliable information.
Wells are numerous throughout the sheet; only the important ones have been shown.
Cart-tracks along canals and unmetalled roads in this sheet are generally motorable in dry season. Permission to use these along canals is required from irrigation authorities.

COMPILATION INDEX

A Surveyed during 1968-69. Updated for major details during 2005-06.

A

Projection - UTM Datum - WGS 84

Magnetic Variation from True North about $\frac{1}{4}^{\circ}$ East in 2005.

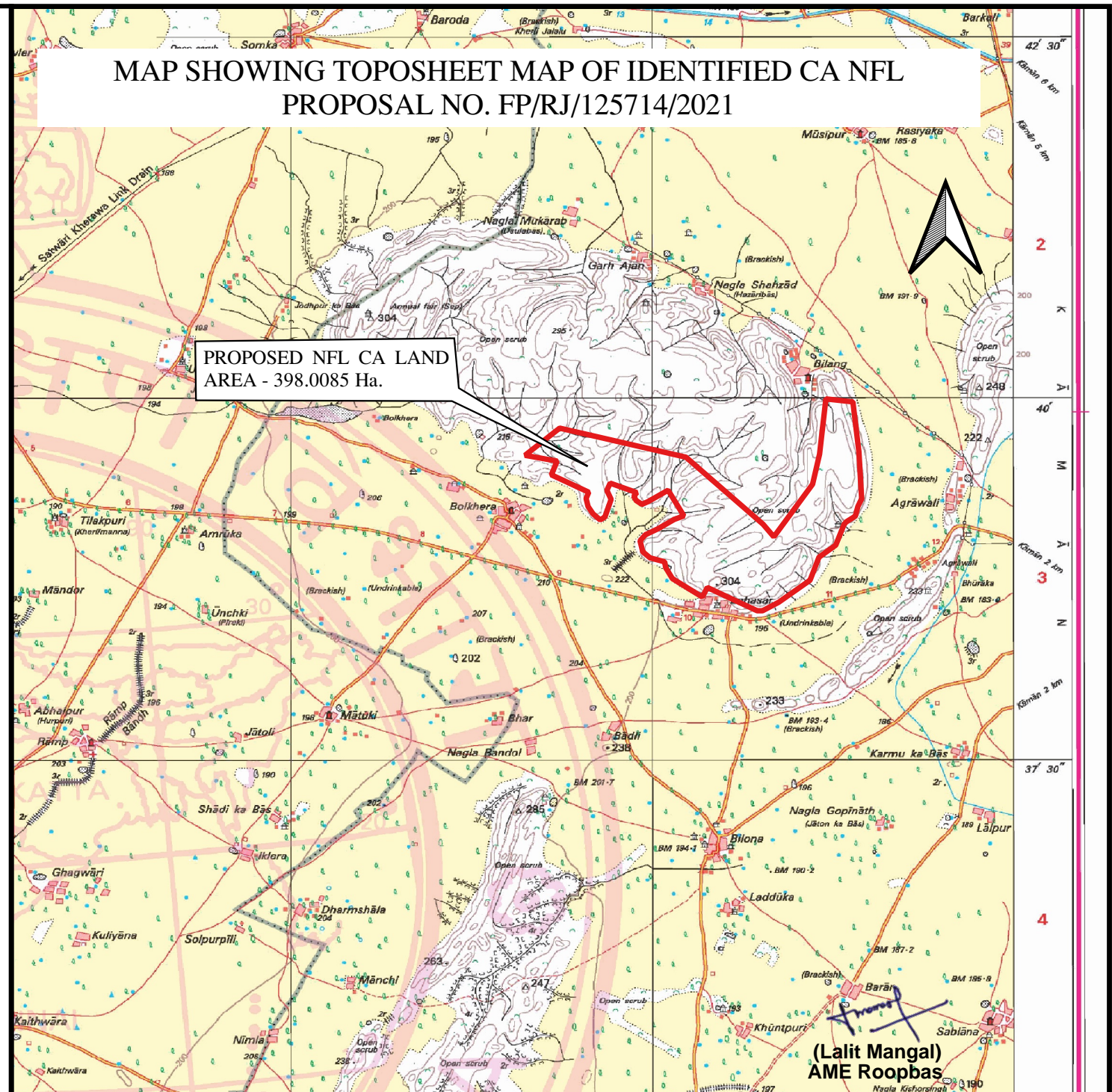
1:50,000

500 m to 1 cm 2 cm to 1 km

CONTOUR INTERVAL 20 METRES

For further details about this map, please contact

Director

Uttarakhand & West Uttar Pradesh Geo-Spatial Data Centre
Survey of India, 17 E.C. Road, Karanpur
Dehra DunMAP SHOWING TOPOSHEET MAP OF IDENTIFIED CA NFL
PROPOSAL NO. FP/RJ/125714/2021PROPOSED NFL CA LAND
AREA - 398.0085 Ha.(Lalit Mangal)
AME Roopbas