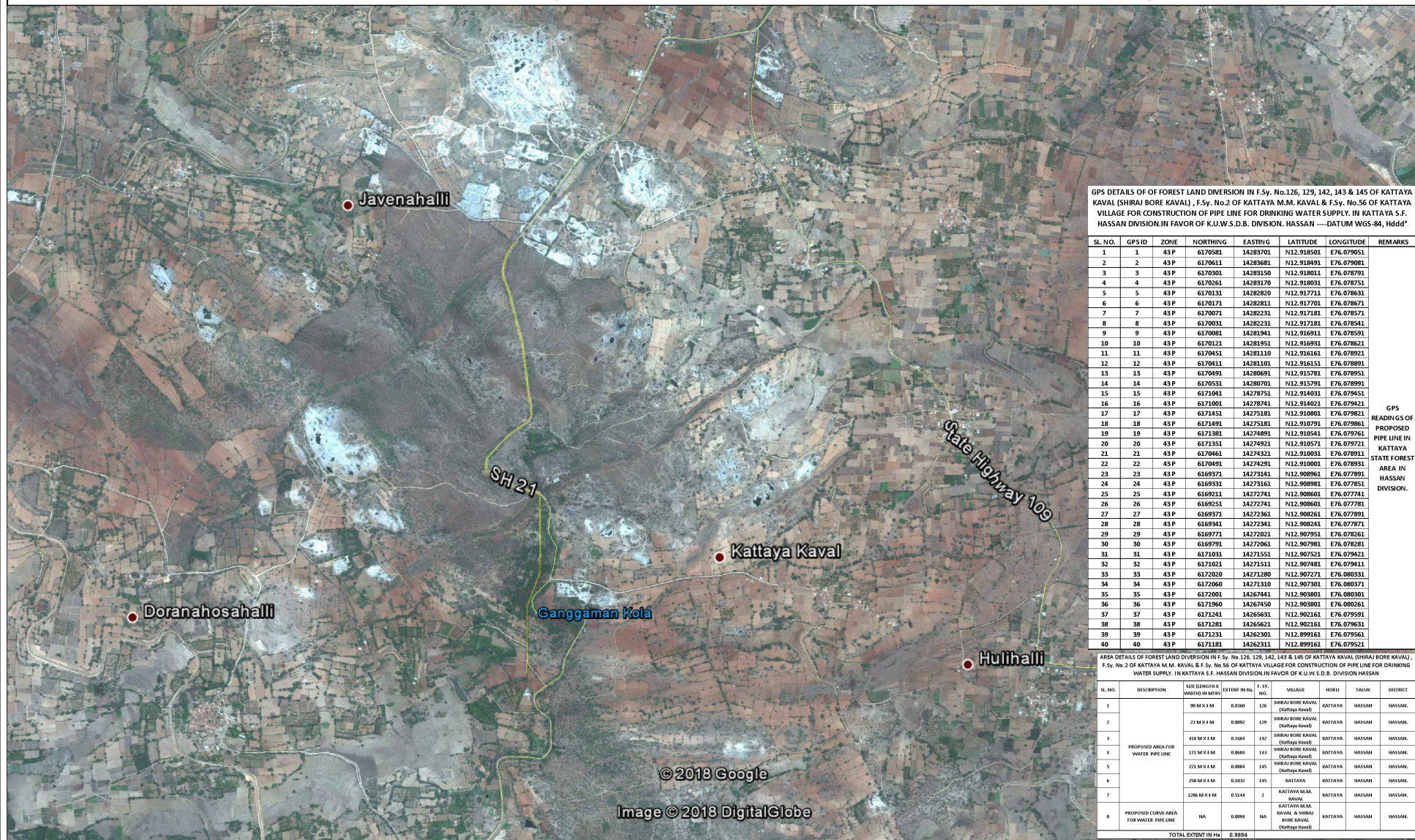


THE GOOGLE-1 MAP SHOWING FOR REQUIREMENT OF FOREST LAND DIVERSION IN F.Sy. No.126, 129, 142, 143 & 145 OF KATTAYA KAVAL (SHIRAJ BORE KAVAL) , F.Sy. No.2 OF KATTAYA M.M. KAVAL & F.Sy. No.56 OF KATTAYA VILLAGE FOR CONSTRUCTION OF PIPE LINE FOR DRINKING WATER SUPPLY. IN KATTAYA S.F. HASSAN DIVISION. (IN FAVOR OF K.U.W.S.D.B. DIVISION HASSAN)



GPS DETAILS OF OF FOREST LAND DIVERSION IN F.Sy. No.126, 129, 142, 143 & 145 OF KATTAYA KAVAL (SHIRAJ BORE KAVAL) , F.Sy. No.2 OF KATTAYA M.M. KAVAL & F.Sy. No.56 OF KATTAYA VILLAGE FOR CONSTRUCTION OF PIPE LINE FOR DRINKING WATER SUPPLY. IN KATTAYA S.F. HASSAN DIVISION. IN FAVOR OF K.U.W.S.D.B. DIVISION. HASSAN — DATUM WGS-84, Hddd°

SL. NO.	GPS ID	ZONE	NORTHING	EASTING	LATITUDE	LONGITUDE	REMARKS
1	1	43 P	6170581	14283701	N12.918501	E76.079051	GPS READINGS OF PROPOSED PIPE LINE IN KATTAYA STATE FOREST AREA IN HASSAN DIVISION.
2	2	43 P	6170611	14283681	N12.918491	E76.079081	
3	3	43 P	6170601	14283510	N12.918011	E76.079791	
4	4	43 P	6170261	14283170	N12.918031	E76.078751	
5	5	43 P	6170131	14282820	N12.917711	E76.078631	
6	6	43 P	6170171	14282811	N12.917701	E76.078671	
7	7	43 P	6170071	14282231	N12.917181	E76.078571	
8	8	43 P	6170031	14282231	N12.917181	E76.078541	
9	9	43 P	6170081	14281941	N12.916911	E76.078591	
10	10	43 P	6170121	14281951	N12.916931	E76.078621	
11	11	43 P	6170451	14281110	N12.916161	E76.078921	
12	12	43 P	6170411	14281101	N12.916151	E76.078891	
13	13	43 P	6170491	14280691	N12.915781	E76.078951	
14	14	43 P	6170531	14280701	N12.915791	E76.078991	
15	15	43 P	6171041	14278751	N12.914031	E76.079451	
16	16	43 P	6171001	14278741	N12.914021	E76.079421	
17	17	43 P	6171451	14275181	N12.910801	E76.079921	
18	18	43 P	6171491	14275181	N12.910791	E76.079861	
19	19	43 P	6171381	14274891	N12.910541	E76.079761	
20	20	43 P	6171351	14274921	N12.910571	E76.079721	
21	21	43 P	6170461	14274321	N12.910031	E76.078911	
22	22	43 P	6170491	14274291	N12.910001	E76.078931	
23	23	43 P	6169371	14273141	N12.908961	E76.077891	
24	24	43 P	6169331	14273161	N12.908981	E76.077851	
25	25	43 P	6169211	14272741	N12.908601	E76.077741	
26	26	43 P	6169251	14272741	N12.908601	E76.077781	
27	27	43 P	6169371	14272361	N12.908261	E76.077891	
28	28	43 P	6169341	14272341	N12.908241	E76.077871	
29	29	43 P	6169771	14272021	N12.907951	E76.078261	
30	30	43 P	6169791	14272061	N12.907981	E76.078281	
31	31	43 P	6171031	14271551	N12.907721	E76.079421	
32	32	43 P	6171021	14271511	N12.907481	E76.079411	
33	33	43 P	6172020	14271280	N12.907271	E76.080331	
34	34	43 P	6172060	14271310	N12.907301	E76.080371	
35	35	43 P	6172001	14267441	N12.903801	E76.080301	
36	36	43 P	6171960	14267450	N12.903801	E76.080261	
37	37	43 P	6171241	14265631	N12.902161	E76.079591	
38	38	43 P	6171281	14265621	N12.902161	E76.079561	
39	39	43 P	6171231	14262301	N12.899161	E76.079561	
40	40	43 P	6171181	14262311	N12.899161	E76.079521	

AREA DETAILS OF FOREST LAND DIVERSION IN F.Sy. No.126, 129, 142, 143 & 145 OF KATTAYA KAVAL (SHIRAJ BORE KAVAL) , F.Sy. No.2 OF KATTAYA M.M. KAVAL & F.Sy. No.56 OF KATTAYA VILLAGE FOR CONSTRUCTION OF PIPE LINE FOR DRINKING WATER SUPPLY. IN KATTAYA S.F. HASSAN DIVISION. IN FAVOR OF K.U.W.S.D.B. DIVISION. HASSAN

S. NO.	DESCRIPTION	SIZE LENGTH X WIDTH IN METER	EXTENT IN Ha.	F. Sy. NO.	VILLAGE	HOBLI	TALUK	DISTRICT
1	PROPOSED AREA FOR WATER PIPE LINE	90 M X 4 M	0.3600	126	SHIRAJ BORE KAVAL (Kattaya Kaval)	KATTAYA	HASSAN	HASSAN
2		73 M X 4 M	0.2892	129	SHIRAJ BORE KAVAL (Kattaya Kaval)	KATTAYA	HASSAN	HASSAN
3		816 M X 4 M	0.1364	142	SHIRAJ BORE KAVAL (Kattaya Kaval)	KATTAYA	HASSAN	HASSAN
4		171 M X 4 M	0.0864	143	SHIRAJ BORE KAVAL (Kattaya Kaval)	KATTAYA	HASSAN	HASSAN
5		221 M X 4 M	0.0884	145	SHIRAJ BORE KAVAL (Kattaya Kaval)	KATTAYA	HASSAN	HASSAN
6		258 M X 4 M	0.1032	145	KATTAYA	KATTAYA	HASSAN	HASSAN
7		1286 M X 4 M	0.5144	2	KATTAYA M.M. KAVAL & SHIRAJ BORE KAVAL (Kattaya Kaval)	KATTAYA	HASSAN	HASSAN
8	PROPOSED CURVE AREA FOR WATER PIPE LINE	NA	0.0094	NA	KATTAYA	KATTAYA	HASSAN	HASSAN
TOTAL EXTENT IN Ha.			0.9854					