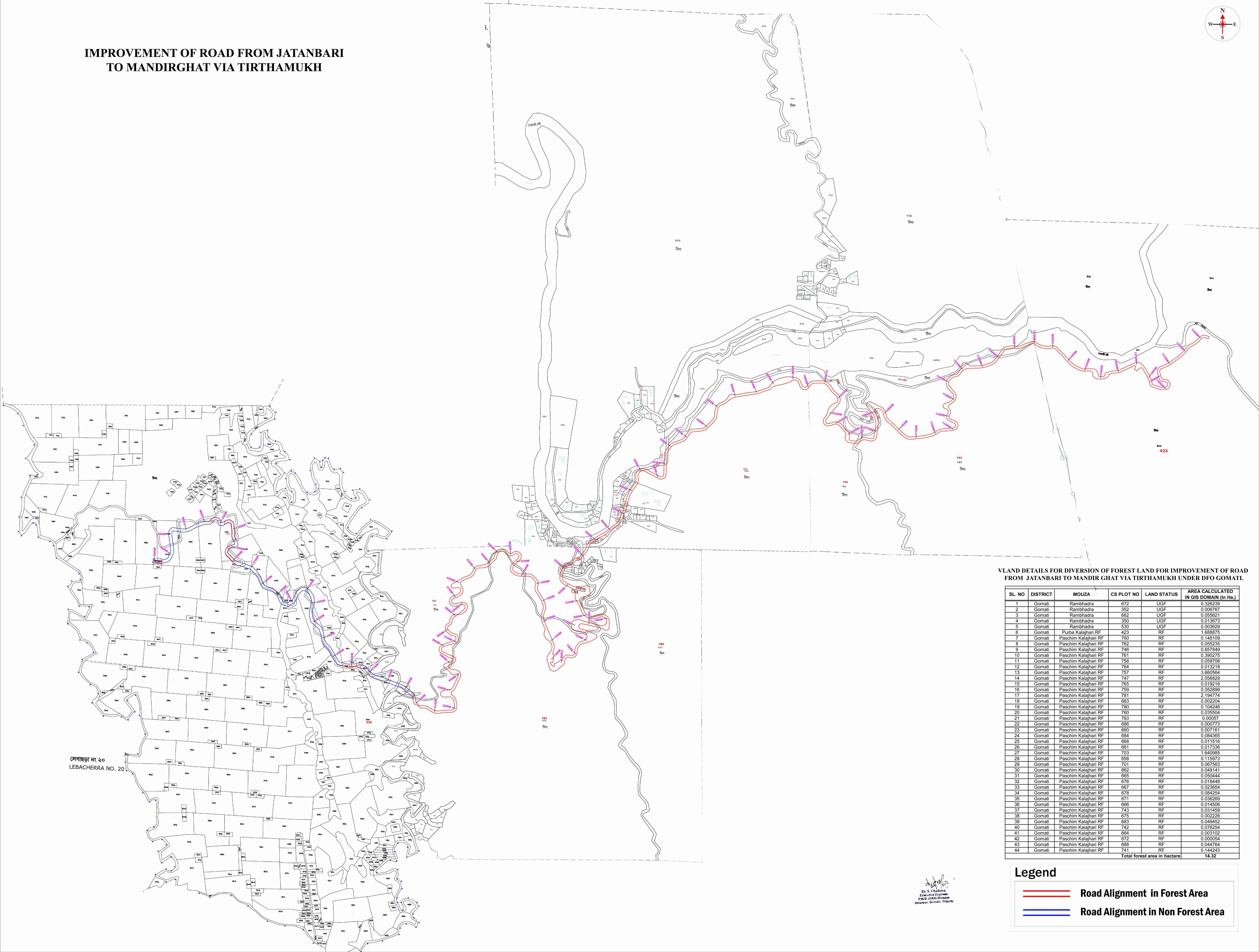
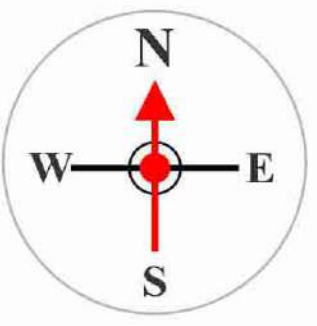


IMPROVEMENT OF ROAD FROM JATANBARI  
TO MANDIRGHAT VIA TIRTHAMUKH



VLAND DETAILS FOR DIVERSION OF FOREST LAND FOR IMPROVEMENT OF ROAD  
FROM JATANBARI TO MANDIR GHAT VIA TIRTHAMUKH UNDER DFO GOMATI.

SL. NO	DISTRICT	MOUZA	CS PLOT NO	LAND STATUS	AREA CALCULATED IN GIS DOMAIN (in Ha.)
1	Gomati	Rambhadra	672	UGF	0.326239
2	Gomati	Rambhadra	352	UGF	0.006767
3	Gomati	Rambhadra	662	UGF	0.055621
4	Gomati	Rambhadra	350	UGF	0.013673
5	Gomati	Rambhadra	530	UGF	0.003629
6	Gomati	Purba Kalajhari RF	423	RF	1.888875
7	Gomati	Paschim Kalajhari RF	760	RF	0.148109
8	Gomati	Paschim Kalajhari RF	762	RF	0.055235
9	Gomati	Paschim Kalajhari RF	746	RF	0.857849
10	Gomati	Paschim Kalajhari RF	761	RF	0.390275
11	Gomati	Paschim Kalajhari RF	758	RF	0.059706
12	Gomati	Paschim Kalajhari RF	764	RF	0.013218
13	Gomati	Paschim Kalajhari RF	757	RF	3.680564
14	Gomati	Paschim Kalajhari RF	747	RF	2.056829
15	Gomati	Paschim Kalajhari RF	765	RF	0.019216
16	Gomati	Paschim Kalajhari RF	759	RF	0.052899
17	Gomati	Paschim Kalajhari RF	781	RF	2.194774
18	Gomati	Paschim Kalajhari RF	663	RF	0.002204
19	Gomati	Paschim Kalajhari RF	780	RF	0.104246
20	Gomati	Paschim Kalajhari RF	760	RF	0.035504
21	Gomati	Paschim Kalajhari RF	763	RF	0.00057
22	Gomati	Paschim Kalajhari RF	686	RF	0.000773
23	Gomati	Paschim Kalajhari RF	660	RF	0.007161
24	Gomati	Paschim Kalajhari RF	684	RF	0.084365
25	Gomati	Paschim Kalajhari RF	668	RF	0.011516
26	Gomati	Paschim Kalajhari RF	661	RF	0.017336
27	Gomati	Paschim Kalajhari RF	703	RF	1.640665
28	Gomati	Paschim Kalajhari RF	658	RF	0.115973
29	Gomati	Paschim Kalajhari RF	701	RF	0.067563
30	Gomati	Paschim Kalajhari RF	662	RF	0.049141
31	Gomati	Paschim Kalajhari RF	665	RF	0.050444
32	Gomati	Paschim Kalajhari RF	676	RF	0.018448
33	Gomati	Paschim Kalajhari RF	667	RF	0.023654
34	Gomati	Paschim Kalajhari RF	678	RF	0.084254
35	Gomati	Paschim Kalajhari RF	671	RF	0.036269
36	Gomati	Paschim Kalajhari RF	666	RF	0.014506
37	Gomati	Paschim Kalajhari RF	743	RF	0.031459
38	Gomati	Paschim Kalajhari RF	675	RF	0.002226
39	Gomati	Paschim Kalajhari RF	683	RF	0.049452
40	Gomati	Paschim Kalajhari RF	742	RF	0.076254
41	Gomati	Paschim Kalajhari RF	664	RF	0.003102
42	Gomati	Paschim Kalajhari RF	672	RF	0.000054
43	Gomati	Paschim Kalajhari RF	688	RF	0.044764
44	Gomati	Paschim Kalajhari RF	741	RF	0.144243
Total forest area in hectare					14.32

Legend

- Road Alignment in Forest Area
- Road Alignment in Non Forest Area

Dr. S. Chakma  
Executive Engineer  
P.W.D. (R&B) Division  
Jamtara, Gomati, Tripura