

Telangana Drinking Water Supply Project - Adilabad

Objectives and Scope:

Telangana drinking water supply project (TDWSP) is the flagship programme of the newly constituted state of Telangana. The State Government has embarked on a vision to provide safe, adequate, permanent and sustainable water supply to rural, urban and industrial areas by 2019. Apart from water for domestic use, the project is planned to meet the water needs of commercial entities, industrial units, Special Economic Zones, etc.

The project will be integrated with the existing and ongoing water supply schemes which are sustainable. Balance surface water requirements will be planned from the proposed Telangana Drinking Water Supply Project. The requirement of water for drinking, cooking, domestic need will be taken into account at 100 liters per capita per day (LPCD) for rural areas, 135 LPCD for municipalities/Nagar Panchayaths and 150 LPCD for municipal corporations. It is planned to supply water at the door step of every household. Samithis headed by women will manage the rural water supply systems at village level.

Need of the Project

The proposed project is to supply water needs of rural, urban, institutional, commercial and industrial excluding GHMC and its surrounding habitations within ORR of Hyderabad.

The following are major challenges in the water supply which promote to go for state wide several water networks(Grid)utilizing surface water sources mainly major irrigation projects and perennial rivers.

i) Ground water depletion

One of the major problems in this sector is depletion of ground water mainly due to over exploitation and short fall in rainfall.

ii) Ground Water Quality

In parts of Telngana ground water contains high concentration of fluoride and iron deposits in the subsurface strata. With depletion of ground water, the concentration of fluoride, iron and salinity is increasing in the ground water outside range of acceptable standard limits for drinking water which leads to provide surface treated water for human consumption. Total 115 quality affected habitations are identified in the districts with excess fluoride (60 Habs), salinity (47 Habs), TDS(0Habs.), Nitrates (7 Habs.) and Iron (1 Habs).However, some of these quality affected habitations are covered in the existing schemes/ongoing schemes with limited supply of quality water.

iii) Ground water pollution

Pollution is also a critical problem both from natural resources, Industrial pollutions, Agriculture pesticides, nitrates and improper disposal of solid and liquid waste etc.,

iv) Sustainability

In water supply sector sustainability of drinking water sources and systems is a major challenge in view of demand for irrigation and adverse seasonal conditions.

v) Increasing demand

Due to change in life styles & urbanization, most of the villagers are demanding household connections and increased level of water supply at their door step. Change in perception of people for better living standards is also leading to increased demand.


vi) Rural Areas and Urban Areas

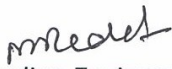
Presently separate network from even from the same water source is planned for rural areas and urban areas due to which the cost of the project is increasing as the urban areas.

NRDWP Guidelines provides for "Gradual shift from over dependence on ground water to surface water sources, and conjunctive use of ground water, surface water and rainwater".

SALIENT FEATURES OF SEGMENT - 22

The Segment 22 covers 1819 habitations spreaded over 21 Mandals and Kaghaznagar & Bellampally Municipalities in 4 Assembly constituencies namely Sirpur, Bellampalli, Asifabad & Khanapur. The raw water will be collected from Komarambheem reservoir near Ada village from where the water will be pumped to headwork's near Manikguda of Asifabad Mandal & Dhanora of Kerimeri Mandal. Manikguda Gutta 1600KL GLBR serves 11 Mandals namely Bellampalli, Tandur, Bheemini, Nennel, Vemanapally, Kasipet, Kaghaznagar, Dahegaon, Sirpur T, Kowatala, Bejjur and Manikguda Gutta 350 KL GLBR serves 3 mandals namely Asifabad, Wankidi, Rebbana. Whereas the clear water sump at Dhanora Head works serves 7 mandals namely Kerimeri, Jainoor, Sirpur U, Tiryani, Narnoor, Utnoor, Indervelly.


Executive Engineer
RWS&S TDWSP
Asifabad


Superintending Engineer
RWS&S TDWSP,
Nirmal (Circle).


"Counter Signed"

Chief Engineer
RWS&S TDWSP, Hyderabad

Details of survey instruments

S.No	Name of the agency	Details of instrument used	Persons involved	Duration of survey
1	Vardhaman Engineers and consultance	DGPS instrument: OMNISTAR(Trimble), LEICA	Mr.Amarendher Mr.praveen Mr.Upendher	Nov, Dec 2015 & Jan 2016


Executive Engineer,
TDWSP, Asifabad


Superintending Engineer,
TDWSP, Nirmal

"Counter Signed"


Chief Engineer,
TDWSP, Hyderabad.

AREA STATEMENT - ASIFABAD SEGMENT - 22 /9- ADBD						
Set	Structure type	Pipe Dia	width m	Length in m	Area_Ha	Total area in Ha
1	PIPELINE	63.000	0.700	864.455	0.061	0.693
	PIPELINE	63.000	0.700	2081.699	0.146	
	PIPELINE	63.000	0.700	2890.961	0.202	
	PIPELINE	63.000	0.700	398.569	0.028	
	PIPELINE	63.000	0.700	3661.425	0.256	
2	PIPELINE	63.000	0.700	2556.088	0.179	0.210
	PIPELINE	63.000	0.700	440.036	0.031	
3	PIPELINE	1600.000	10.000	1001.896	1.002	2.885
	PIPELINE	110.000	0.700	619.503	0.043	
	PIPELINE	2600.000	10.000	628.698	0.629	
	PIPELINE	1200.000	6.000	242.514	0.146	
	GLBR	-	-	-	0.783	
	GLBR	-	-	-	0.282	
4	PIPELINE	63.000	0.700	1440.688	0.101	0.101
5	PIPELINE	75.000	0.700	1845.041	0.129	0.129
6	PIPELINE	63.000	0.700	427.710	0.030	0.140
	PIPELINE	110.000	0.700	1577.443	0.110	
TOTAL				20676.726	4.158	4.158

medel

DETAILS OF FOREST AREA INVOLVED IN ASIFABAD SEG-22/9, ADILABAD DISTRICT

S.NO	DIVISION	RANGE	SECTION	BEAT	BLOCK	COMP_NO	Set	Dia	Length_mt	Width_mts	Area
1	2	3	4	5	6	7	8	9	10	11	12
1	BELLAMPALLY	ASIFABAD	KHAMANA	WELGI	GARLAPET[PART]	260	1	63	3661.425	0.70	0.256
2	BELLAMPALLY	ASIFABAD	KHAMANA	WELGI	GARLAPET[PART]	262	1	63	2890.961	0.70	0.202
3	BELLAMPALLY	ASIFABAD	KHAMANA	WELGI	GARLAPET[PART]	263	1	63	864.455	0.70	0.061
4	BELLAMPALLY	ASIFABAD	KHAMANA	WELGI	GARLAPET[PART]	263	1	63	398.569	0.70	0.028
5	BELLAMPALLY	ASIFABAD	KHAMANA	WELGI	GARLAPET[PART]	266	1	63	2081.699	0.70	0.146
6	BELLAMPALLY	ASIFABAD	KHAMANA	WELGI	GARLAPET[PART]	268	2	63	2556.088	0.70	0.179
7	BELLAMPALLY	ASIFABAD	KHAMANA	WELGI	GARLAPET[PART]	268	2	63	440.036	0.70	0.031
8	BELLAMPALLY	ASIFABAD	ASIFABAD	ASIFABAD	ADA	121	3	1600	1001.896	10.00	1.002
9	BELLAMPALLY	ASIFABAD	ASIFABAD	ASIFABAD	DHANORA	79	3	110	619.503	0.70	0.043
10	BELLAMPALLY	ASIFABAD	ASIFABAD	ASIFABAD	DHANORA	79	3	2600	628.698	10.00	0.629
11	BELLAMPALLY	ASIFABAD	ASIFABAD	ASIFABAD	DHANORA	79	3	1200	242.514	6.00	0.146
12	BELLAMPALLY	ASIFABAD	ASIFABAD	ASIFABAD	ADA	72	4	63	1440.688	0.70	0.101
13	BELLAMPALLY	ASIFABAD	KHAMANA	KANERGOAN	GARLAPET[PART]	270	5	75	1845.041	0.70	0.129
14	BELLAMPALLY	ASIFABAD	CHIRRAKUNTA	CHIRRAKUNTA	TIRYANI	105	6	63	427.710	0.70	0.030
15	BELLAMPALLY	ASIFABAD	CHIRRAKUNTA	CHIRRAKUNTA	TIRYANI	105	6	110	1577.443	0.70	0.110
						TOTAL			20676.726		3.093

S.NO	DIVISION	RANGE	SECTION	BEAT	BLOCK	COMP_NO	Set	STRUCTURE	Area in Ha
1	BELLAMPALLY	ASIFABAD	ASIFABAD	ASIFABAD	DHANORA	79	3	GLBR	0.783
2	BELLAMPALLY	ASIFABAD	ASIFABAD	ASIFABAD	DHANORA	79	3	GLBR	0.282
						TOTAL			1.065

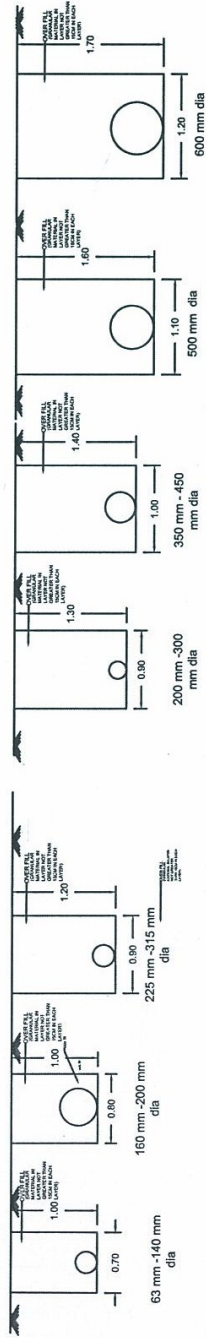
Executive Engineer
TDWSP, Asifabad

Superintending Engineer,
TDWSP, Nirmal

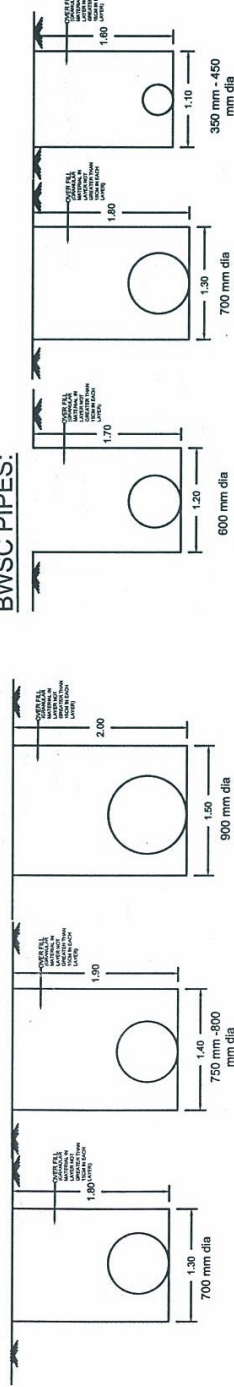
'Counter Signed"
Chief Engineer,
TDWSP, Hyderabad

TELANGANA DRINKING WATER SUPPLY PROJECT SEGMENT- 22 ADIL ABAD DIST. SECTION SHOWING THE PIPELINE CROSS SECTIONS

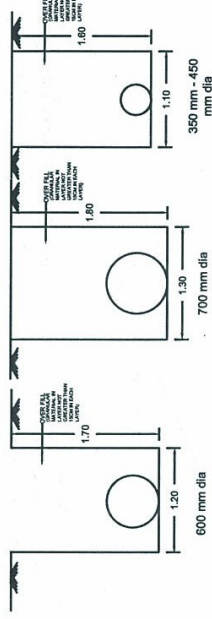
HDPE PIPES:



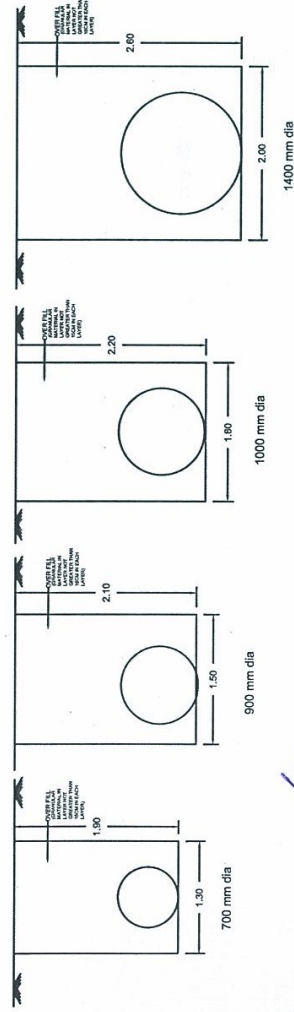
DI PIPES:



BWSC PIPES:



MS PIPES:

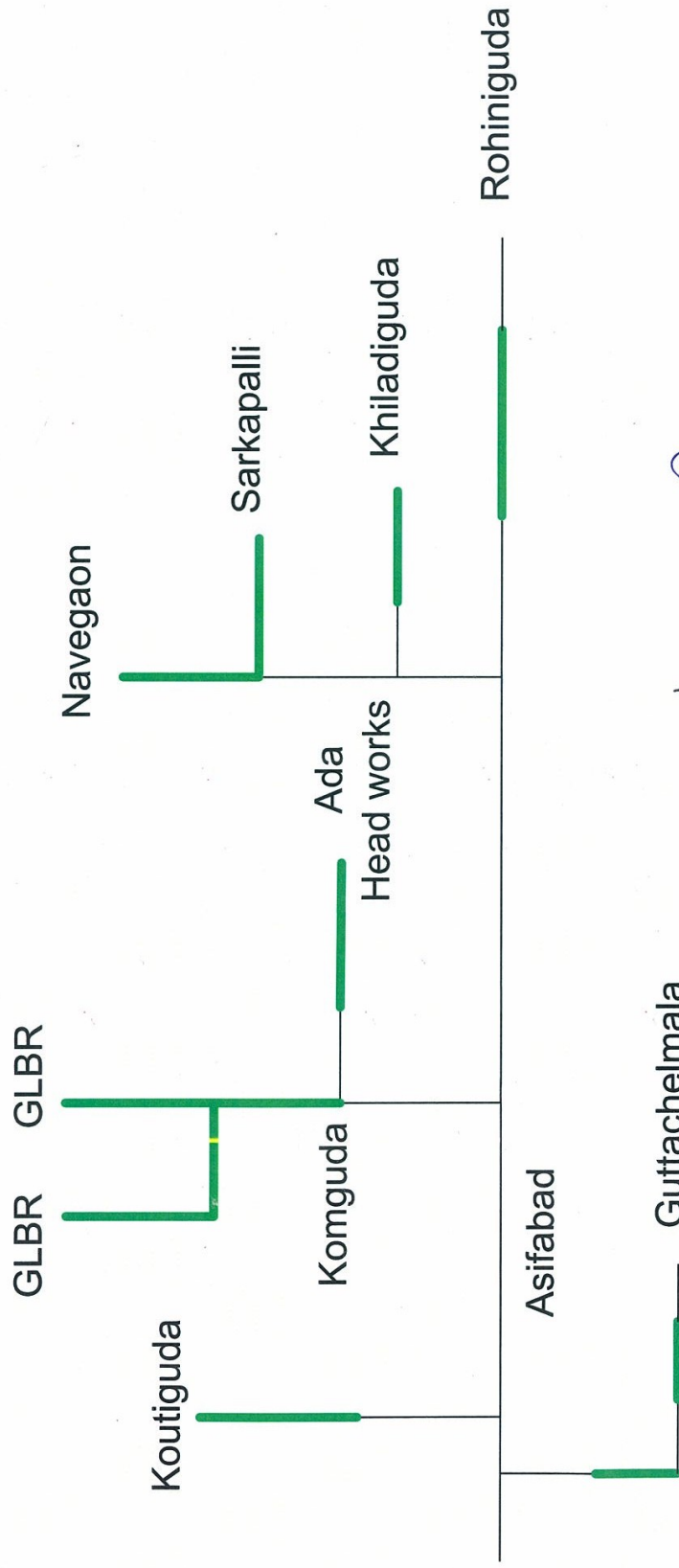


ALL DIMENSIONS ARE IN METRES
UNLESS OTHERWISE SPECIFIED

Handwritten signature

FLOWCHART SHOWING PIPELINE UNDER ASIFABAD SEGMENT-22/9,

ADILABAD DISTRICT



Guttachelmala

marked

Phy