



Project: Roll out of 4th Generation (4G) Broadband Services in West Bengal.

Reliance Jio Infocom Ltd (RJIL), a subsidiary of Reliance Industries Ltd. (RIL), has won Broadband Wireless Access (BWA) Spectrum for the entire country from Government of India in the Auction held in June 2010. Ours is the only Company holding Pan-India Wireless Broadband Spectrum which would be used to provide state of the art 4G services with an objective to become a nationwide service provider in the info-com space, more specifically the promising Broadband market in India.

In line with these objectives, Reliance Jio Infocomm Limited (RJIL) has set about an ambitious network rollout plan comprising of active and passive network elements comprising of Masts, Optic fiber etc. so as to provide wireless and wire-line broadband services. Our network rollout is already under progress in most states at a very rapid pace. We would use Long Term Evolution Time Division Duplex (LTE-TDD) technology to launch our wireless broadband services whereas for Wire-line Broadband network we would use Fiber-to-the-home (FTTH) technology, which are the most advanced, state of the art technologies which would provide fast, far reaching and economic data services to the people of this country.

Now Reliance Jio Infocomm Limited (RJIL) has prepared detailed plan to implement 4G wireless and wire-line broadband services in the state of West Bengal. Reliance Jio Infocomm Limited intend to launch services in West Bengal, by the end of this year. This project has potential to create employment direct and indirect jobs. Starting with all the major cities in West Bengal, effort would allow RJIL to connect homes, offices and buildings with wireless access infrastructure as well as fiber optic cables providing highest bandwidth to every customer. This can also be effectively used by the Government for improving e-governance, Tele-education, improving health care using Telemedicine facilities etc. Keeping the above in view to cover the area in different forest location, telecom infrastructure are required to be deployed consisting Cable Network and Transmission facilities.

TRANSMISSION FACILITIES

- To cover area under forest, as per the plan, several Towers / Masts are to be constructed.
- Towers are to be constructed as per the transmission capacity requirement. Hence, in most of the places, we shall be erecting up to 40M high towers in general. With some variation of erecting Masts of 25M high, for all of which, we shall be requiring 10M x 10M space to 15M x 15M space. The towers will be having solar power/ DG sets installed for ensuring power backup.
- Photograph along with a sample design diagram is appended below:

As per the system, allocation of space on lease and grant of the right of way for area as proposed will enable RJIL to provide seamless high speed broadband services to the users in the entire areas of North Bengal.

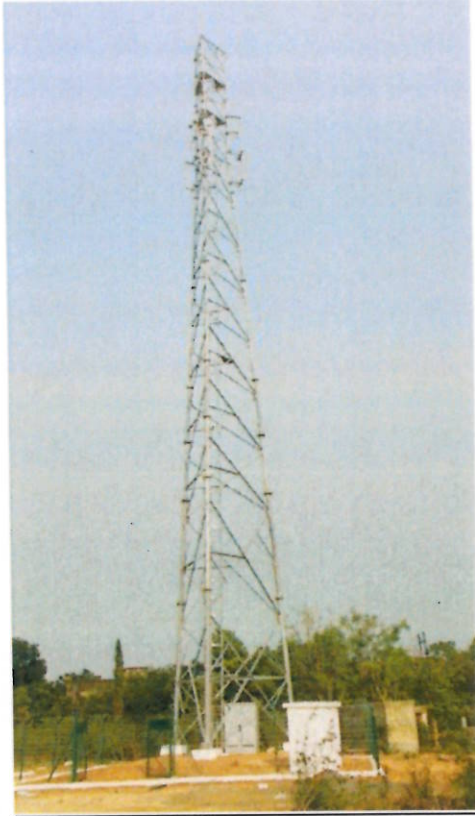
Reliance Jio Infocomm Limited: CIN U72900MH2007PLC234712

Local Office Address: Godrej Waterside Building, Tower-II, 17th & 18th Floor, Sector-V, Saltlake, Kolkata-700091.

Registered Office: 9th Floor, Maker Chambers IV, 222, Nariman Point, Mumbai – 400 021, Maharashtra, India.

Tel no: 022-22785000, www.jio.com

TRANSMISSION FACILITY




B. B. B. B.

[illegible]

Reliance Jio Infocomm Limited: CIN U72900MH2007PLC234712
Local Office Address: Godrej Waterside Building, Tower-II, 17th & 18th Floor, Sector-V, Saltlake, Kolkata-700091.
Registered Office: 9th Floor, Maker Chambers IV, 222, Nariman Point, Mumbai – 400 021, Maharashtra, India.
Tel no: 022-22785000, www.jio.com

Justification for selection of sites in forest area in North Bengal

North Bengal is also the proposed area of the Project : **"Roll out of 4th Generation (4G) Broadband Services in West Bengal"**. North Bengal has 29.99 % forest cover and 37.76% vegetative cover.

To make available high speed broadband service in those areas with great values in terms of making essential service available for business, education, healthcare, e-governance, nature conservation, safety & security & so on, Reliance Jio Infocomm Limited needs access in forest area for setting up network for better and effective connectivity.

Apart from-- considering technical parameter for improve and effective 4G network, nominal (Lat & Long) of the site is selected which also falls in forest areas.



Dy. General Manager
Reliance Jio Infocomm Limited