



**No. D43J10**  
Scale 1:50,000

D43J5 (48N/5)	D43J9 (48N/9)	Bellary KARNATAKA D43J13 (48N/13)
D43J6 (48N/6)	D43J10 (48N/10) Haveri KARNATAKA	D43J14 (48N/14)
D43J7 (48N/7) Shimoga KARNATAKA	D43J11 (48N/11)	D43J15 (48N/15) Davanagere KARNATAKA

1 Gadag, KARNATAKA.

भारतीय सर्वेक्षण विभाग SURVEY OF INDIA

1st Edition 2009. Price : Rs. 50/-

**CONVENTIONAL SYMBOLS**

Express highway, with tol. with bridge, with distance stone	
Roads, metalled, according to importance	
Roads, double carriageway, according to importance	
Unmetalled road, Cart-track, Rick-track with path, Foot-path	
Streams, with track in bed, unconfined, Canal	
Dams, masonry or rock-filled, earthwork, Weir	
River, dry with water channel, with island & rocks, Tidal river	
Submerged rocks, Shoal, Swamp, Reeds	
Wells, lined, unlined, Tube-well, Spring, Tank, panislat, dry	
Embankments, road or rail, tank, Broken ground	
Railways, broad gauge, double, single with station, under constn.	
Railways, other gauges, double, single with distance stone, do.	
Mineral line or tramway, Kin, Cutting with tunnel	
Contours with sub-features, Rocky slopes, Cliffs	
Sand features (1/4M, (2/4M, (3/4M, (4/4M, (5/4M, (6/4M, (7/4M, (8/4M, (9/4M, (10/4M)	
Towns or Villages, inhabited, deserted, Fort	
Hill, permanent, temporary, Tower, Antenna, Mast	
Temples, Churches, Mosques, High, Tomb, Graves	
Lighthouses, Lightships, Buoys, lighted, unlighted, Anchorage	
Mine, View on hills, Grass, Soil	
Palms, palms, other, Plantain, Coffee, Bamboo, Other trees	
Areas cultivated, wooded, Surveyed tree	
Boundary, international	
state, demarcated, undemarcated	
district, subdivision, taluk or taluk forest	
Boundary pillars, surveyed, uncalced	
Height, Mangulated, station, point, approximate, $\Delta 200$ , $\Delta 200$ , $\Delta 200$	
Bench-mark, geodetic, barometric, $BM 63-3$ , $BM 62-7$	
Post office, Telegraph office, Overhead tank	
Rest house or inspection bungalow, Circuit house, Police station	
Camping ground, Forest, reserved, protected	
Spaced names, administrative, locality or street	
Hospital, Dispensary, Veterinary Hospital / Dispensary	
Aerodrome, heliport, Tourist site	
Power line, with pylons surveyed, with poles unsurveyed	

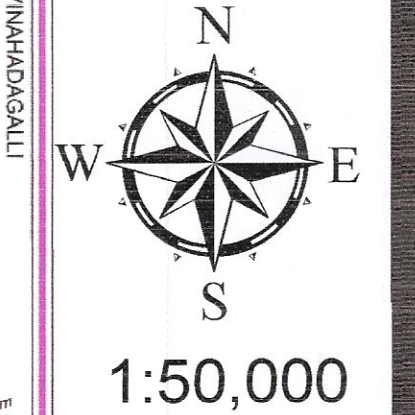
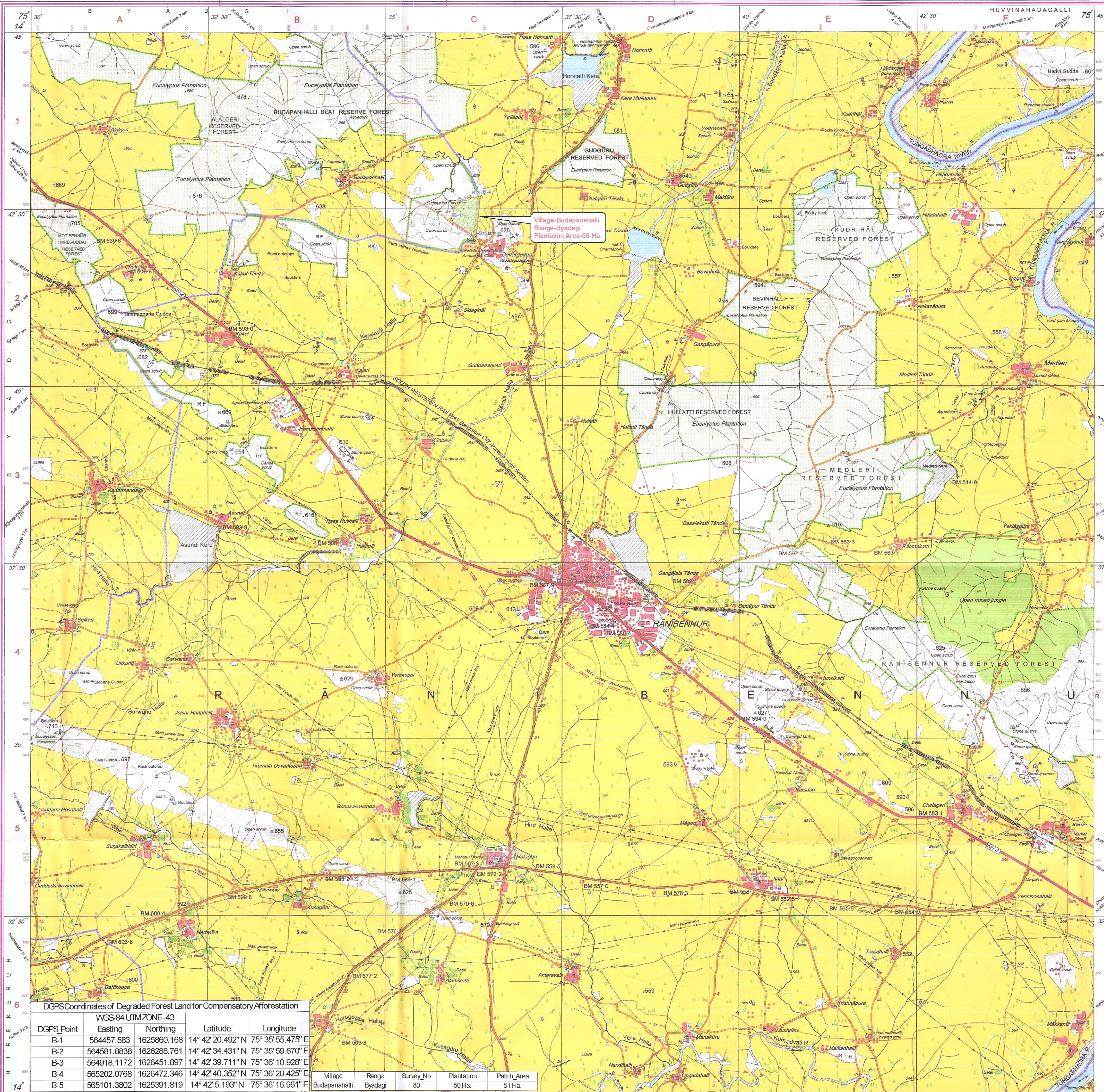
REFERENCE  
M.P. National Highway No. 4.

**NOTES :-**  
Heights are in metres and above Indian mean sea level.  
Contours are approximate.  
A relative height, e.g., 50, represents the approximate height, in metres, between the top and bottom of a steep slope.  
Tanks, shown dry, in this area usually contain water from July to December.  
Unmetalled roads are metalled and most of the cart-tracks are metalled in dry season.  
The triangulated heights and contours in this sheet have not been adjusted to the heights of the spirit-levelled bench-marks and may not be strictly in accordance with them.  
The kilometre stone numbers along roads and railway are shown in stout type, e.g., 5, whereas milestone numbers are shown in upright type, e.g., 5.  
The majority of the wells in this sheet are brackish.

COMPILATION INDEX  
A. Surveyed during 1975-76 and updated for major details during 2005-06.

Projection - UTM Datum - WGS 84  
Magnetic Variation from True North about 1° West in 2005.  
(Decreasing by about 1' annually)  
Scale 1:50,000  
500 m to 1 cm  
2 cm to 1 km  
3 Kilometres  
CONTOUR INTERVAL 20 METRES

For further details about this map, please contact  
Director  
Karnataka Geo-Spatial Data Centre  
Survey of India, Koramangala II Block  
Bangalore.



DGPS Coordinates of Degraded Forest Land for Compensatory Afforestation

DGPS Point	Eastings	Northings	Latitude	Longitude
B-1	564457.583	1625860.168	14° 42' 20.492" N	75° 35' 55.475" E
B-2	564561.8638	1626288.761	14° 42' 34.431" N	75° 35' 59.670" E
B-3	564918.1172	1626451.897	14° 42' 39.711" N	75° 36' 10.928" E
B-4	565202.0768	1626472.346	14° 42' 40.352" N	75° 36' 20.425" E
B-5	565101.3802	1625391.819	14° 42' 5.193" N	75° 36' 16.961" E

Village	Range	Survey No	Plantation	Patch Area
Budapanahalli	Byadagi	80	50 Ha.	51 Ha.

Range Forest Officer  
Byadgi Range Byadgi

Assistant Conservator of Forests  
Haveri Sub division, Haveri.

Deputy Conservator of Forests  
Haveri Division, Haveri.