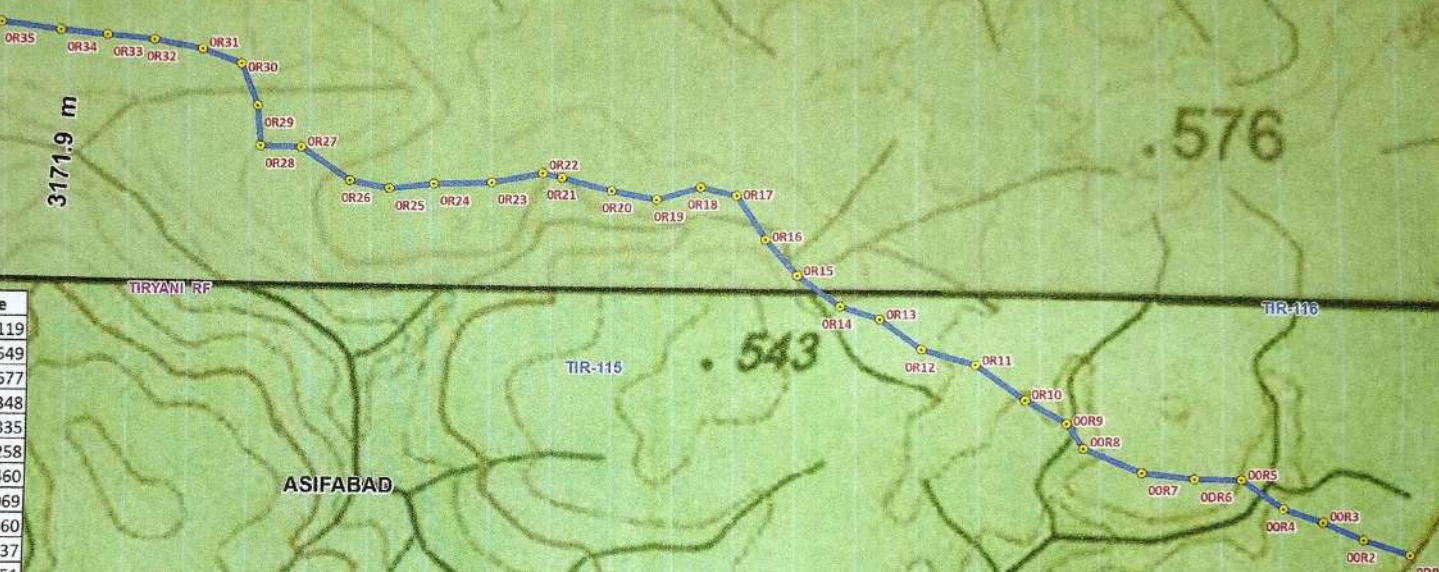


Map showing Forest area proposed for Diversion for road works from Raghavapur to govana road km 0/0 to 9/234 in Asifabad Division sanctioned under RCPLWE in favour of EE, R&B, Asifabad

Length of line = 3171.9 m
Width in mts= 5.50 m
Area in Ha= 1.745Ha

3171.9 m

Name	Easting	Northing	Longitude	Latitude
OOR2	301723.907	2129099.109	79.11362103	19.24578119
OOR3	301642.597	2129132.575	79.11284431	19.24607549
OOR4	301562.424	2129157.943	79.11207923	19.24629677
OOR5	301477.674	2129213.856	79.11126748	19.24679348
OOR7	301283.699	2129225.915	79.10942150	19.24688335
OOR8	301169.102	2129272.468	79.10832685	19.24729258
OOR9	301135.176	2129320.668	79.10799922	19.24772460
ODR1	301817.734	2129070.358	79.11451629	19.24553069
ODR6	301386.182	2129214.421	79.11039731	19.24678960
OR10	301054.038	2129365.257	79.10722297	19.24811937
OR11	300957.309	2129432.864	79.10629605	19.24872051
OR12	300852.228	2129462.797	79.10529361	19.24898052
OR13	300772.014	2129522.566	79.10452455	19.24951248
OR14	300696.029	2129547.575	79.10379932	19.24973088
OR15	300611.679	2129608.216	79.10299083	19.25027030
OR16	300550.079	2129679.606	79.10239758	19.25090906
OR17	300493.850	2129765.352	79.10185391	19.25167800
OR18	300423.211	2129782.284	79.10118035	19.25182397
OR19	300336.811	2129758.476	79.10036113	19.25160040
OR20	300248.131	2129776.461	79.09951589	19.25175408
OR21	300149.237	2129802.622	79.09857265	19.25198060
OR22	300111.671	2129812.062	79.09821440	19.25206215
OR23	300010.408	2129793.284	79.09725331	19.25188252
OR24	299896.748	2129790.149	79.09617269	19.25184296
OR25	299807.977	2129779.782	79.09532954	19.25174053
OR26	299730.059	2129794.848	79.09458694	19.25186890
OR27	299634.323	2129860.144	79.09366964	19.25244918
OR28	299553.748	2129861.462	79.09290321	19.25245311
OR29	299548.649	2129940.578	79.09284646	19.25316721
OR30	299515.984	2130022.542	79.09252724	19.25390430
OR31	299439.922	2130050.783	79.09180091	19.25415184
OR32	299345.505	2130068.625	79.09090110	19.25430362
OR33	299252.559	2130076.913	79.09001627	19.25436925
OR34	299161.501	2130085.153	79.08914941	19.25443463
OR35	299045.235	2130099.956	79.08804212	19.25455678



se jungle mainly teak and bamboo

Handwritten signature
JEE/APP

Handwritten signature
DISTRICT R&B OFFICER
Executive Engineer
Kumram Bheem-Asifabad

Legend

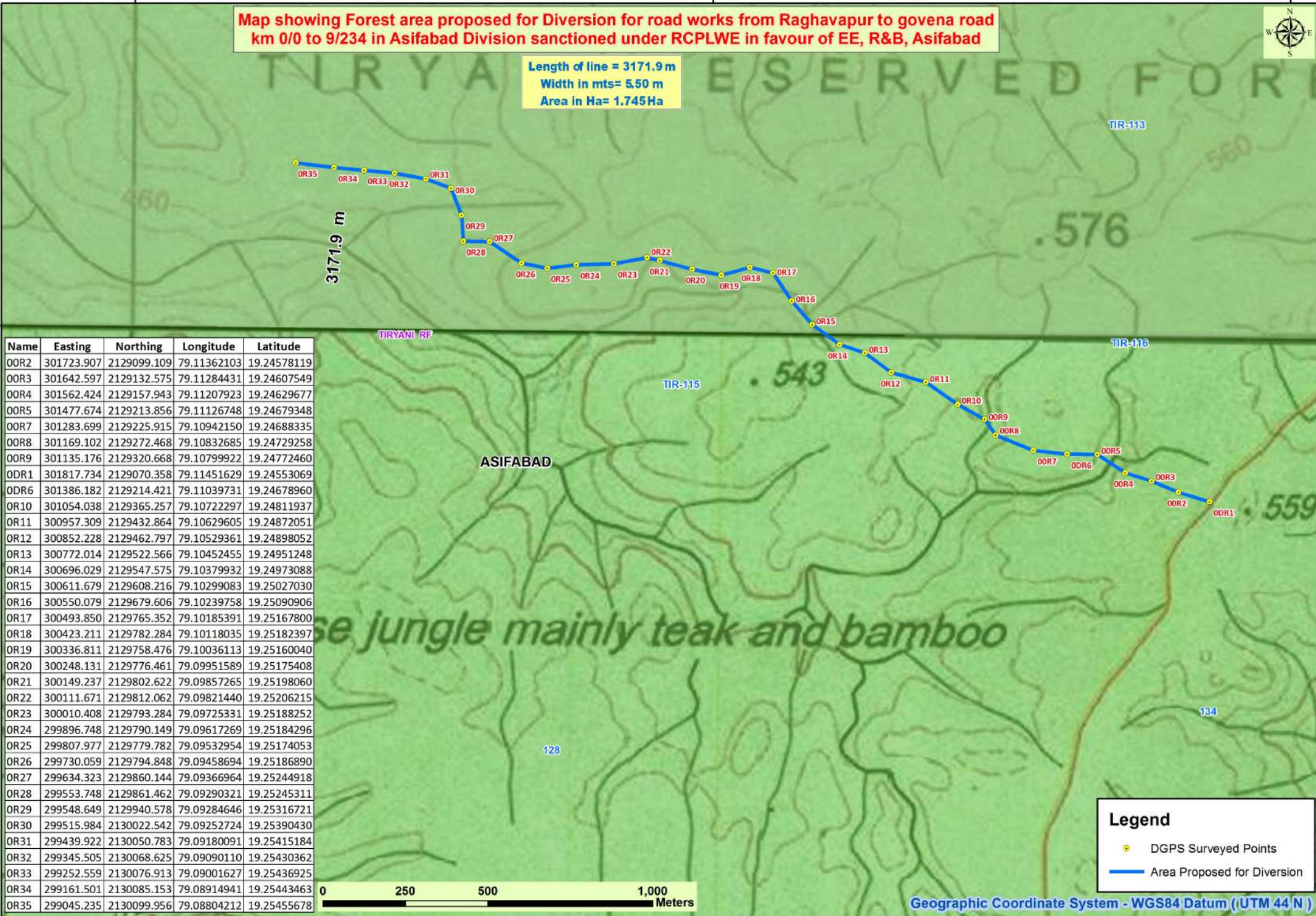
- DGPS Surveyed Points
- Area Proposed for Diversion

Geographic Coordinate System - WGS84 Datum (UTM 44 N)

Tagged to nearest SOI GCP

Map showing Forest area proposed for Diversion for road works from Raghavapur to govana road km 0/0 to 9/234 in Asifabad Division sanctioned under RCPLWE in favour of EE, R&B, Asifabad

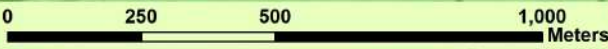
Length of line = 3171.9 m
 Width in mts= 5.50 m
 Area in Ha= 1.745Ha



Name	Easting	Northing	Longitude	Latitude
OOR2	301723.907	2129099.109	79.11362103	19.24578119
OOR3	301642.597	2129132.575	79.11284431	19.24607549
OOR4	301562.424	2129157.943	79.11207923	19.24629677
OOR5	301477.674	2129213.856	79.11126748	19.24679348
OOR7	301283.699	2129225.915	79.10942150	19.24688335
OOR8	301169.102	2129272.468	79.10832685	19.24729258
OOR9	301135.176	2129320.668	79.10799922	19.24772460
ODR1	301817.734	2129070.358	79.11451629	19.24553069
ODR6	301386.182	2129214.421	79.11039731	19.24678960
OR10	301054.038	2129365.257	79.10722297	19.24811937
OR11	300957.309	2129432.864	79.10629605	19.24872051
OR12	300852.228	2129462.797	79.10529361	19.24898052
OR13	300772.014	2129522.566	79.10452455	19.24951248
OR14	300696.029	2129547.575	79.10379932	19.24973088
OR15	300611.679	2129608.216	79.10299083	19.25027030
OR16	300550.079	2129679.606	79.10239758	19.25090906
OR17	300493.850	2129765.352	79.10185391	19.25167800
OR18	300423.211	2129782.284	79.10118035	19.25182397
OR19	300336.811	2129758.476	79.10036113	19.25160040
OR20	300248.131	2129776.461	79.09951589	19.25175408
OR21	300149.237	2129802.622	79.09857265	19.25198060
OR22	300111.671	2129812.062	79.09821440	19.25206215
OR23	300010.408	2129793.284	79.09725331	19.25188252
OR24	299896.748	2129790.149	79.09617269	19.25184296
OR25	299807.977	2129779.782	79.09532954	19.25174053
OR26	299730.059	2129794.848	79.09458694	19.25186890
OR27	299634.323	2129860.144	79.09366964	19.25244918
OR28	299553.748	2129861.462	79.09290321	19.25245311
OR29	299548.649	2129940.578	79.09284646	19.25316721
OR30	299515.984	2130022.542	79.09252724	19.25390430
OR31	299439.922	2130050.783	79.09180091	19.25415184
OR32	299345.505	2130068.625	79.09090110	19.25430362
OR33	299252.559	2130076.913	79.09001627	19.25436925
OR34	299161.501	2130085.153	79.08914941	19.25443463
OR35	299045.235	2130099.956	79.08804212	19.25455678

Legend

- DGPS Surveyed Points
- Area Proposed for Diversion



Geographic Coordinate System - WGS84 Datum (UTM 44 N)

Tagged to nearest SOI GCP