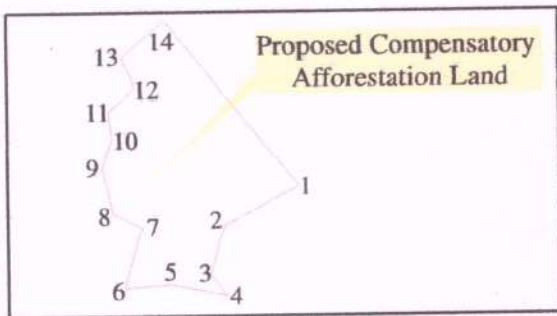
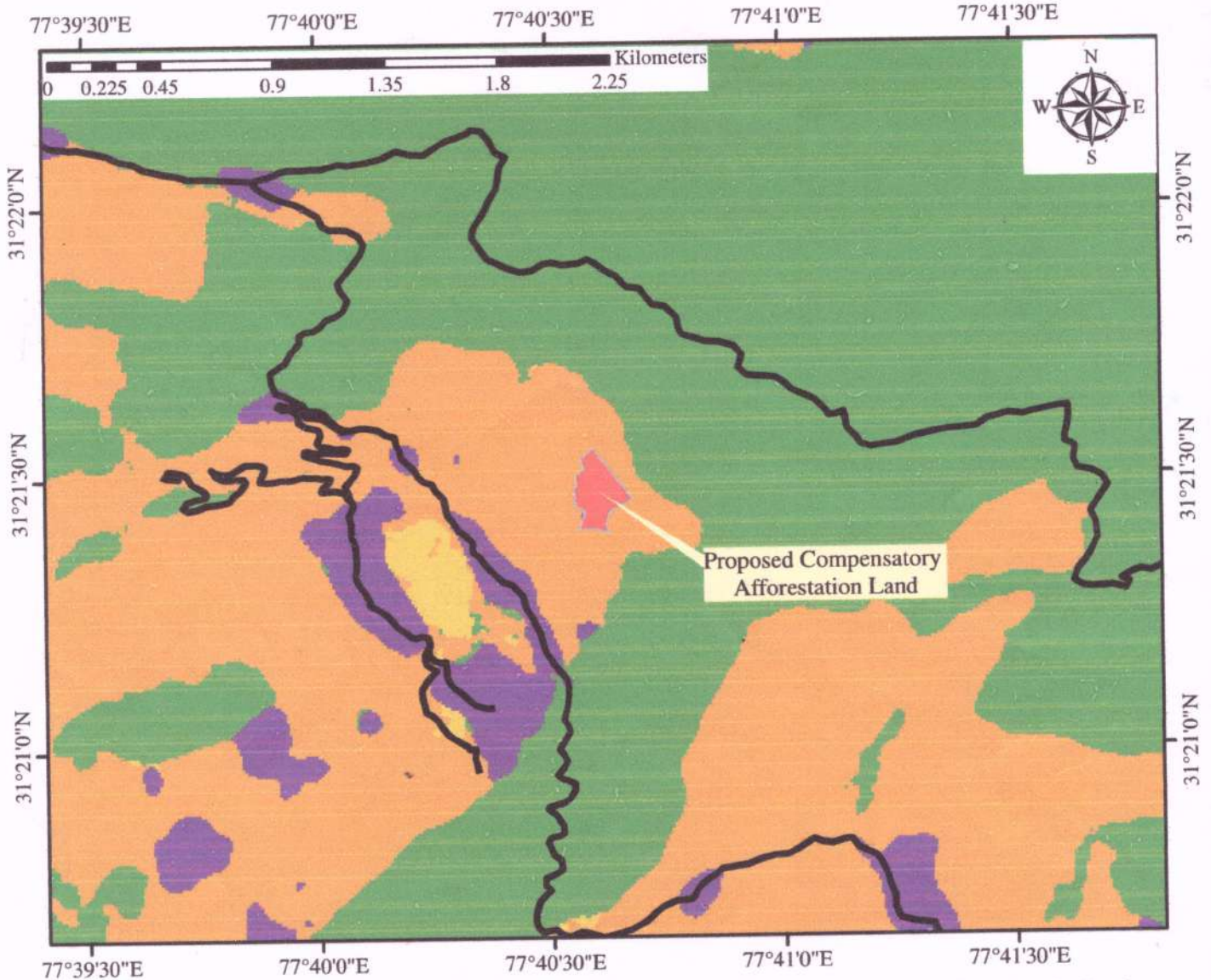


Digital Landuse Map depicting Compensatory Afforestation Site of 3.0894 Hectare in DPF Nehra (D-48) For Construction of PHV Kainchi Nehra to Nagadhar Via Growth Road KM 0/000 to KM 3/146.



Detail of Co-Ordinate for Land

Point No.	Longitude	Latitude
1.	31°21'27.52"N	77°40'40.75"E
2.	31°21'26.27"N	77°40'37.80"E
3.	31°21'24.67"N	77°40'37.22"E
4.	31°21'23.95"N	77°40'37.82"E
5.	31°21'24.36"N	77°40'35.64"E
6.	31°21'24.27"N	77°40'33.87"E
7.	31°21'26.26"N	77°40'34.60"E
8.	31°21'26.78"N	77°40'33.47"E
9.	31°21'28.32"N	77°40'33.10"E
10.	31°21'29.26"N	77°40'33.57"E
11.	31°21'30.14"N	77°40'33.45"E
12.	31°21'30.93"N	77°40'34.52"E
13.	31°21'31.96"N	77°40'33.99"E
14.	31°21'33.15"N	77°40'35.69"E

Legend

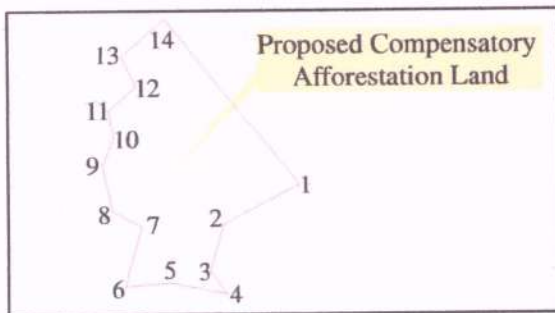
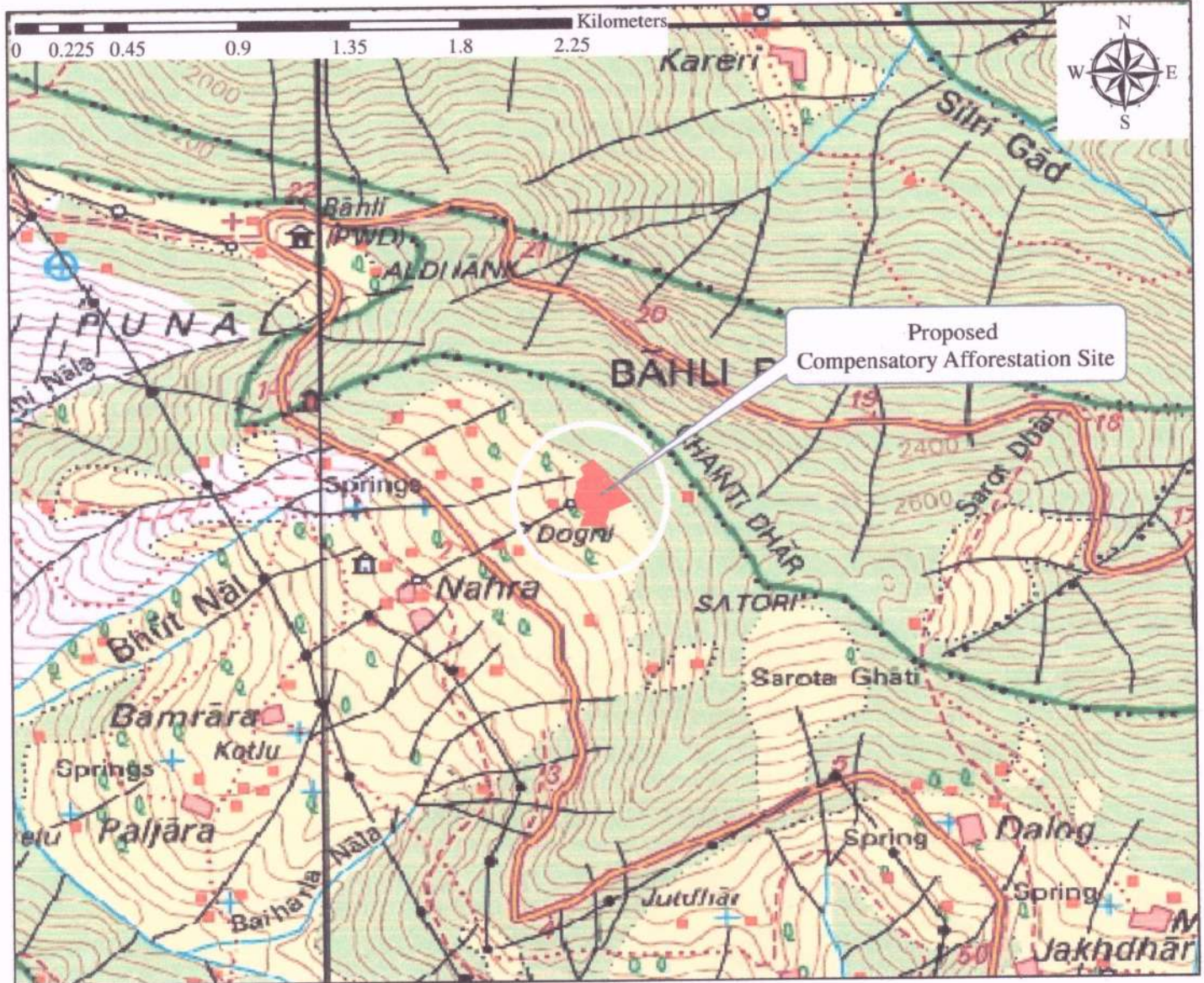
- Existing Road Alignments
- Proposed Compensatory Afforestation Land
- Forest Land
- Agricultural Land
- Built-Up Area Land
- Water Bodies
- Waste/Shrub Land

Place : Rampur Bsr.
Date: 28-03-2022

Divisional Forest Officer,
Rampur Forest Division,
District Shimla (Himachal Pradesh)

Executive Engineer,
HPPWD Division Rampur Bsr.,
District Shimla (Himachal Pradesh)

Toposheet of Showing depicting Compensatory Afforestation Site of 3.0894 Hectare in DPF Nehra (D-48) For Construction of PHC Kainchi Nehra to Nagadhar Via Growth Road KM 0/000 to KM 3/146



Legend

Proposed Compensatory Afforestation Land

Toposheet No. 53 E 11

Detail of Co-Ordinate for Land

Point No.	Longitude	Latitude
1.	31°21'27.52"N	77°40'40.75"E
2.	31°21'26.27"N	77°40'37.80"E
3.	31°21'24.67"N	77°40'37.22"E
4.	31°21'23.95"N	77°40'37.82"E
5.	31°21'24.36"N	77°40'35.64"E
6.	31°21'24.27"N	77°40'33.87"E
7.	31°21'26.26"N	77°40'34.60"E
8.	31°21'26.78"N	77°40'33.47"E
9.	31°21'28.32"N	77°40'33.10"E
10.	31°21'29.26"N	77°40'33.57"E
11.	31°21'30.14"N	77°40'33.45"E
12.	31°21'30.93"N	77°40'34.52"E
13.	31°21'31.96"N	77°40'33.99"E
14.	31°21'33.15"N	77°40'35.69"E