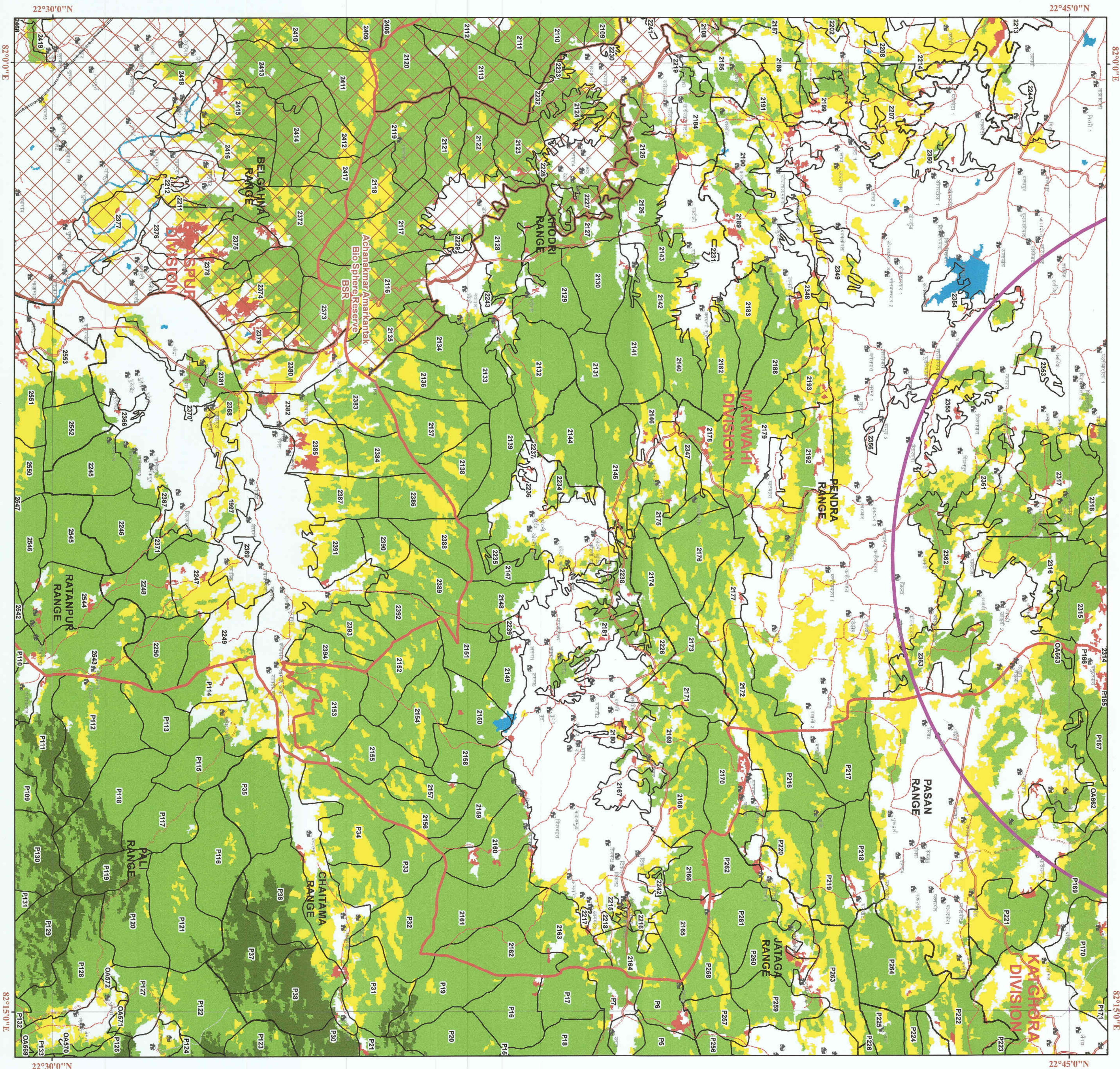




छत्तीसगढ़ वन विभाग वन आवरण मानचित्र

Toposheet No. - 64 J 02

Save Trees, Save Forests and Save Wildlife for the
Benefit of Self & the Nation



LEGEND

- Town / City
- Village
- PILLAR DETAIL
- PLACE-DETAIL
- Cart Tracks
- Metalled Road
- Tracks
- UnMetalled Road
- Rail
- CA Land Boundary
- 10_KM_Buffer
- Compartment Boundary
- Range Boundary
- NP/WLS Boundary
- Division Boundary
- CGGrid_15m_region
- Forest Cover
- ISFR 2021
- MDF
- NON FOREST
- OPEN FOREST
- SCRUB
- VDF
- WATER

1 cm = 1 km

MAP PREPARED FOR:-

कार्यालय अभियांता, (अति उच्च वार संचार)
समान छग्रायिका, मराठा कोखा (छा.)

FP/CG/TRANS/43092/2019

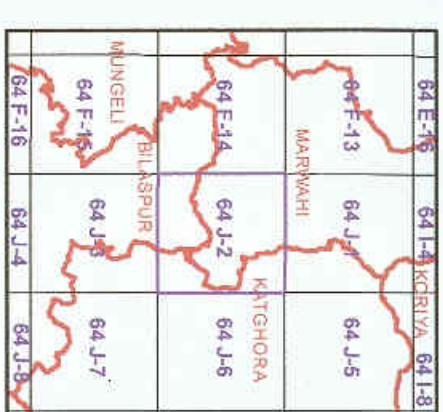
CA Land

DIVISIONAL FOREST OFFICER

MARWAH DIVISION RAIPUR (C.G.)

Division of Forest land for non forest purpose under forest conservation act, 1980 Proposed
for Modification of 220 KV Transmission Line, New BC Electrified East West Rail Corridor
from Gevra road-Pendra road Railway Line Between location no. 278-281 ha. 2.128 ha.
Regarding

Note :- Shapfile provided by user agencies.

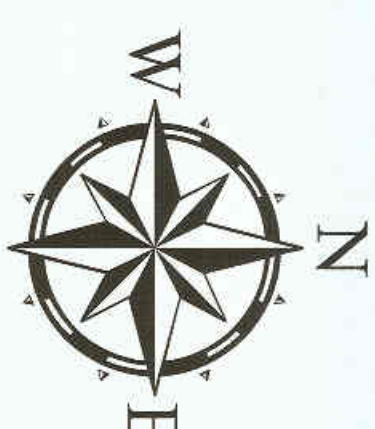


Sheet to Index

Map Source:- 1. Uninterrupted Boundary from Shaded Map
2. Forest Cover Based on Digital Interpretation of Aerial Photograph (Sat. 2005 to
Dec 2005) ISSR II from Resource-2 and IRS-P6 (Resource-1)
3. Uninterrupted features are based on SSI Digital Data (Scale: 1:50,000)
and Digitization Database.

Map Source:- 1. Uninterrupted Boundary from Shaded Map

Map Source:- 1. Uninterrupted Boundary from Shaded Map



1:50,000

NOT FOR EXPORT



Prepared and Printed by:- GIS Cell,
Forest Management Information System Division, Raipur