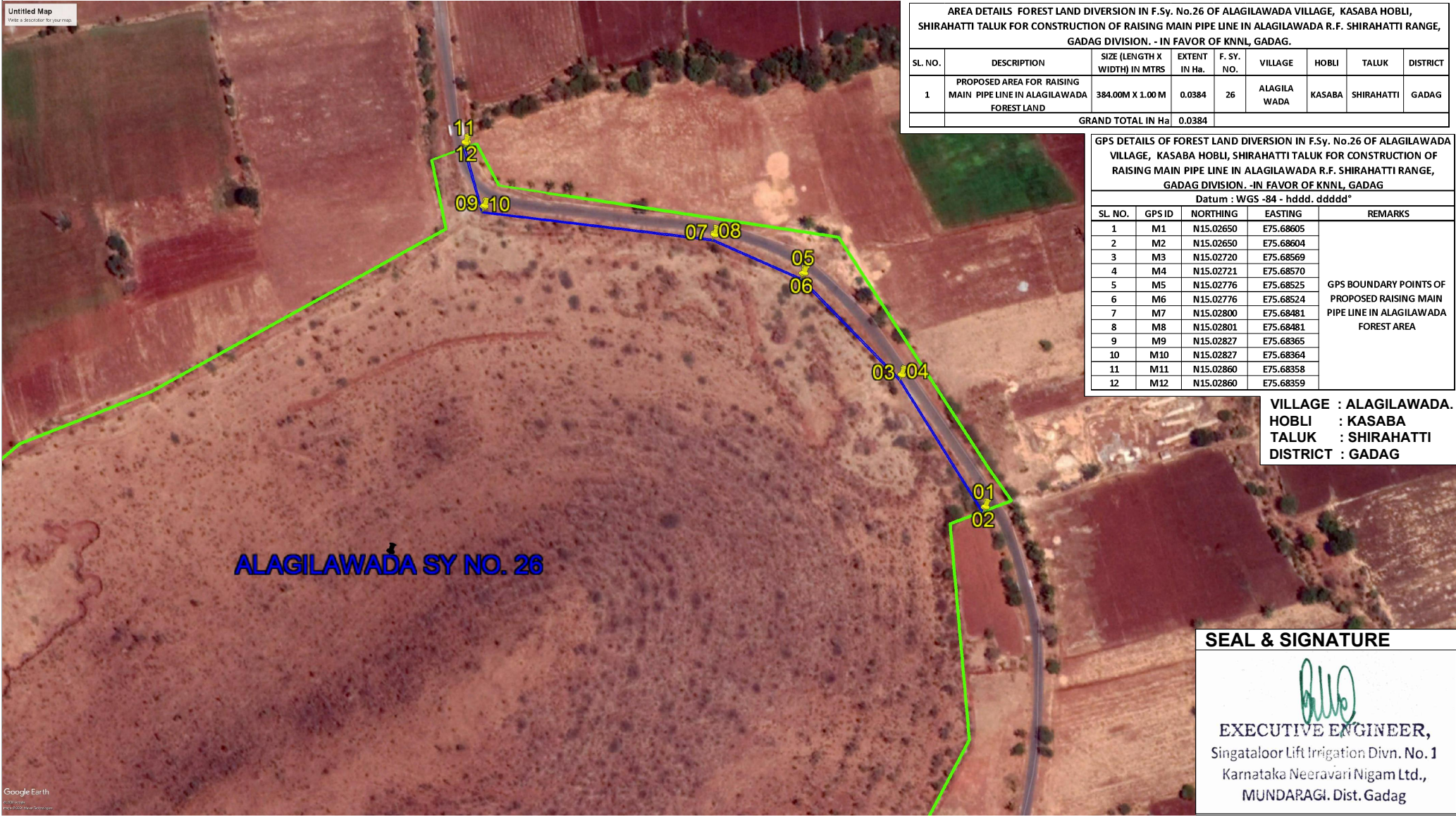


THE GOOGLE MAP SHOWING THE AREA REQUIREMENT OF FOREST LAND DIVERSION IN F.Sy. No. 26 OF ALAGILAWADA VILLAGE, KASABA HOBLI, SHIRAHATTI TALUK, GADAG DISTRICT FOR CONSTRUCTION OF RAISING MAIN PIPE LINE IN ALAGILAWADA R.F. IN THE SCHEME OF SHIRAHATTI LIFT IRRIGATION IN SHIRAHATTI RANGE, GADAG DIVISION. -IN FAVOR OF KNNL, GADAG.





**THE GOOGLE MAP SHOWING THE AREA REQUIREMENT OF FOREST LAND DIVERSION IN F.Sy. No.69 & 71 OF BELLATTI VILLAGE, KASABA HOBLI, SHIRAHATTI TALUK ,GADAG DISTRICT FOR CONSTRUCTION OF STORAGE/ DISTRIBUTOR TANK AND RAISING MAIN AND GRAVITY MAIN PIPE LINE IN BELLATTI FOREST IN THE SCHEME OF SHIRAHATTI LIFT IRRIGATION IN SHIRAHATTI RANGE, GADAG DIVISION. -IN FAVOR OF KNNL, GADAG..**

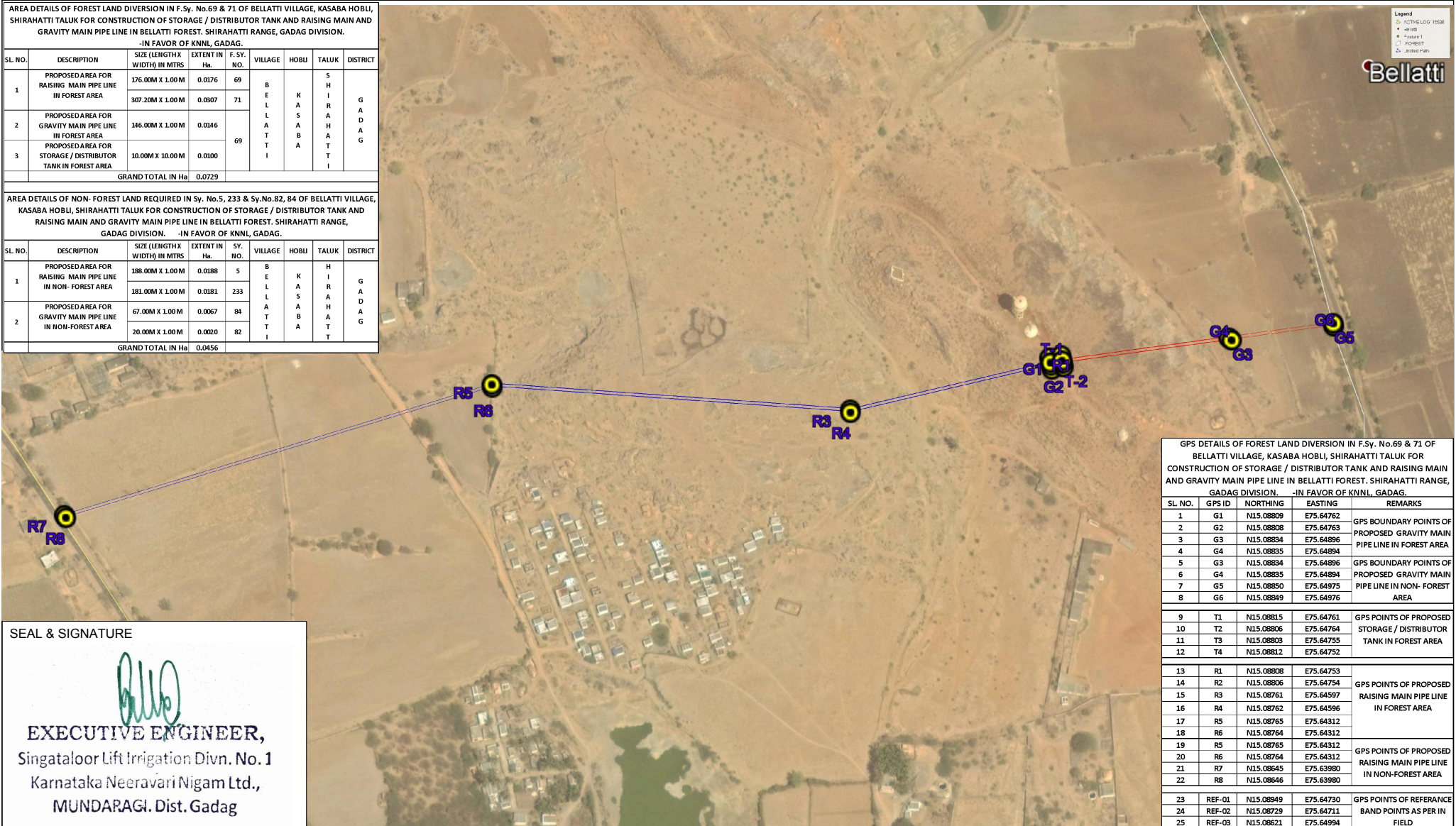
AREA DETAILS OF FOREST LAND DIVERSION IN F.Sy. No.69 & 71 OF BELLATTI VILLAGE, KASABA HOBLI, SHIRAHATTI TALUK FOR CONSTRUCTION OF STORAGE / DISTRIBUTOR TANK AND RAISING MAIN AND GRAVITY MAIN PIPE LINE IN BELLATTI FOREST. SHIRAHATTI RANGE, GADAG DIVISION.

-IN FAVOR OF KNNL, GADAG.

SL. NO.	DESCRIPTION	SIZE (LENGTH X WIDTH) IN MTRS	EXTENT IN Ha.	F. SY. NO.	VILLAGE	HOBLI	TALUK	DISTRICT
1	PROPOSED AREA FOR RAISING MAIN PIPE LINE IN FOREST AREA	176.00M X 1.00 M	0.0176	69	B E L L A T T I	K A S A B A	S H I R A H A T T I	G A D A G
		307.20M X 1.00 M	0.0307	71				
2	PROPOSED AREA FOR GRAVITY MAIN PIPE LINE IN FOREST AREA	146.00M X 1.00 M	0.0146	69				
3	PROPOSED AREA FOR STORAGE / DISTRIBUTOR TANK IN FOREST AREA	10.00M X 10.00 M	0.0100					
		GRAND TOTAL IN Ha	0.0729					

AREA DETAILS OF NON- FOREST LAND REQUIRED IN Sy. No.5, 233 & Sy.No.82, 84 OF BELLATTI VILLAGE, KASABA HOBLI, SHIRAHATTI TALUK FOR CONSTRUCTION OF STORAGE / DISTRIBUTOR TANK AND RAISING MAIN AND GRAVITY MAIN PIPE LINE IN BELLATTI FOREST. SHIRAHATTI RANGE, GADAG DIVISION. -IN FAVOR OF KNNL, GADAG.

SL. NO.	DESCRIPTION	SIZE (LENGTH X WIDTH) IN MTRS	EXTENT IN Ha.	SY. NO.	VILLAGE	HOBLI	TALUK	DISTRICT
1	PROPOSED AREA FOR RAISING MAIN PIPE LINE IN NON- FOREST AREA	188.00M X 1.00 M	0.0188	5	B	E	H	G A D A G
		181.00M X 1.00 M	0.0181	233	L	K	I	
2	PROPOSED AREA FOR GRAVITY MAIN PIPE LINE IN NON-FOREST AREA	67.00M X 1.00 M	0.0067	84	L	A	R	
		20.00M X 1.00 M	0.0020	82	A	S	A	
					A	A	A	
					T	B	T	
GRAND TOTAL IN Ha		0.0456						



GPS DETAILS OF FOREST LAND DIVERSION IN F.Sy. No.69 & 71 OF BELLATTI VILLAGE, KASABA HOBLI, SHIRAHATTI TALUK FOR CONSTRUCTION OF STORAGE / DISTRIBUTOR TANK AND RAISING MAIN AND GRAVITY MAIN PIPE LINE IN BELLATTI FOREST. SHIRAHATTI RANGE, GADAG DIVISION. -IN FAVOR OF KNNL, GADAG.

SL. NO.	GPS ID	NORTHING	EASTING	REMARKS
1	G1	N15.08809	E75.64762	GPS BOUNDARY POINTS OF PROPOSED GRAVITY MAIN PIPE LINE IN FOREST AREA
2	G2	N15.08808	E75.64763	
3	G3	N15.08834	E75.64896	
4	G4	N15.08835	E75.64894	
5	G3	N15.08834	E75.64896	GPS BOUNDARY POINTS OF PROPOSED GRAVITY MAIN PIPE LINE IN NON- FOREST AREA
6	G4	N15.08835	E75.64894	
7	G5	N15.08850	E75.64975	
8	G6	N15.08849	E75.64976	
9	T1	N15.08815	E75.64761	GPS POINTS OF PROPOSED STORAGE / DISTRIBUTOR TANK IN FOREST AREA
10	T2	N15.08806	E75.64764	
11	T3	N15.08803	E75.64755	
12	T4	N15.08812	E75.64752	
13	R1	N15.08808	E75.64753	GPS POINTS OF PROPOSED RAISING MAIN PIPE LINE IN FOREST AREA
14	R2	N15.08806	E75.64754	
15	R3	N15.08761	E75.64597	
16	R4	N15.08762	E75.64596	
17	R5	N15.08765	E75.64312	
18	R6	N15.08764	E75.64312	
19	R5	N15.08765	E75.64312	GPS POINTS OF PROPOSED RAISING MAIN PIPE LINE IN NON-FOREST AREA
20	R6	N15.08764	E75.64312	
21	R7	N15.08645	E75.63980	
22	R8	N15.08646	E75.63980	
23	REF-01	N15.08949	E75.64730	GPS POINTS OF REFERENCE BAND POINTS AS PER IN FIELD
24	REF-02	N15.08729	E75.64711	
25	REF-03	N15.08621	E75.64994	

SEAL & SIGNATURE

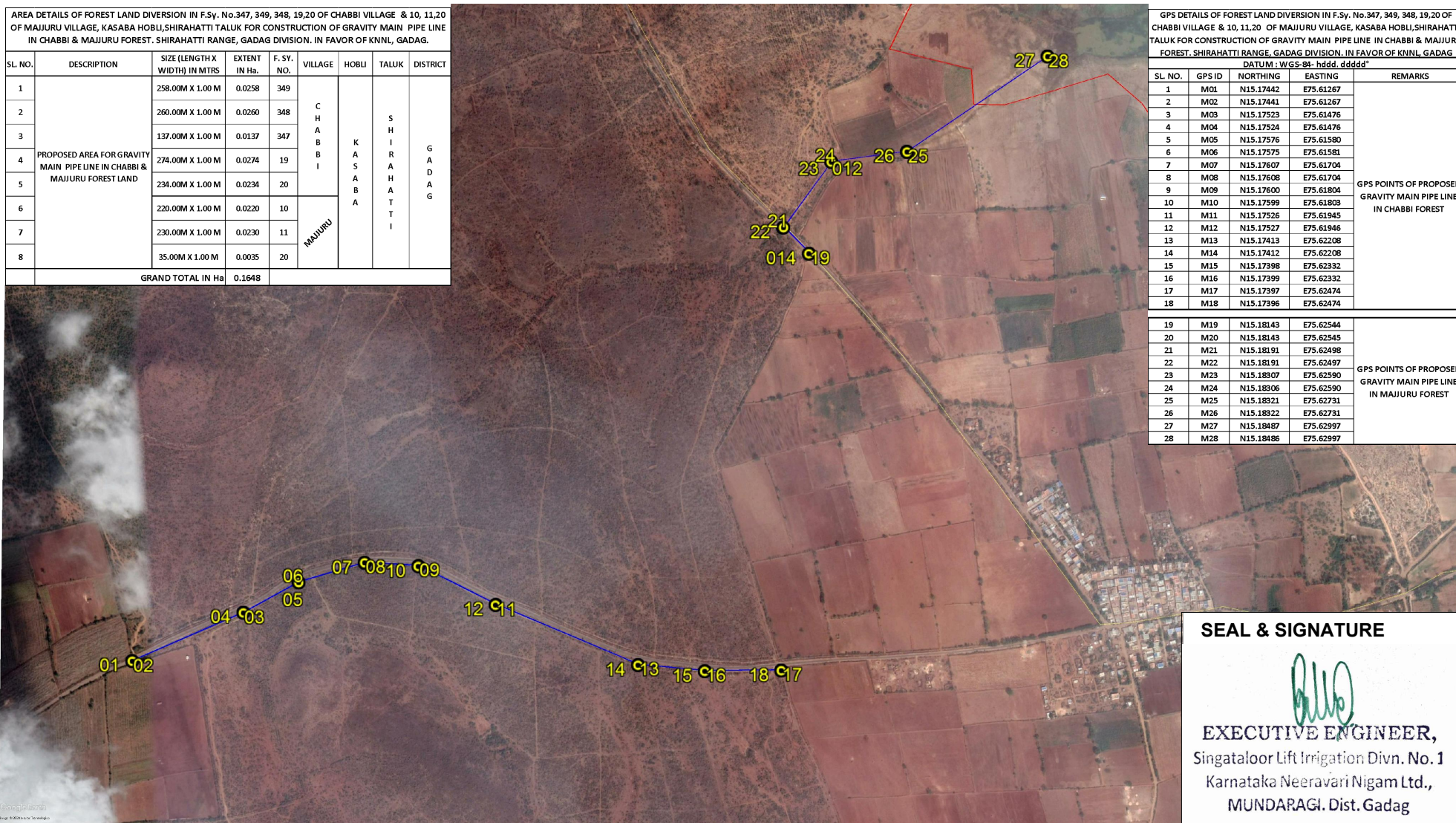
**EXECUTIVE ENGINEER,**  
Singataloor Lift Irrigation Divn. No. 1  
Karnataka Neeravari Nigam Ltd.,  
MUNDARAGI. Dist. Gadag



**THE GOOGLE MAP SHOWING THE AREA REQUIREMENT OF FOREST LAND DIVERSION IN F.Sy. No.347, 349, 348,19,20 OF CHABBI VILLAGE &10, 11,20 OF MAJJURU VILLAGE, KASABA HOBLI,SHIRAHATTI TALUK FOR CONSTRUCTION OF RAISING MAIN PIPE LINE IN CHABBI &MAJJURU FOREST IN THE SCHEME OF SHIRAHATTI LIFT IRRIGATION IN SHIRAHATTI RANGE, GADAG DIVISION. -IN FAVOR OF KNNL, GADAG.**

AREA DETAILS OF FOREST LAND DIVERSION IN F.Sy. No.347, 349, 348, 19,20 OF CHABBI VILLAGE & 10, 11,20 OF MAJJURU VILLAGE, KASABA HOBLI,SHIRAHATTI TALUK FOR CONSTRUCTION OF GRAVITY MAIN PIPE LINE IN CHABBI & MAJJURU FOREST. SHIRAHATTI RANGE, GADAG DIVISION. IN FAVOR OF KNNL, GADAG.

SL. NO.	DESCRIPTION	SIZE (LENGTH X WIDTH) IN MTRS	EXTENT IN Ha.	F. SY. NO.	VILLAGE	HOBLI	TALUK	DISTRICT
1	PROPOSED AREA FOR GRAVITY MAIN PIPE LINE IN CHABBI & MAJJURU FOREST LAND	258.00M X 1.00 M	0.0258	349	CHABBI	KASABA	SHIRAHATTI	GADAG
2		260.00M X 1.00 M	0.0260	348				
3		137.00M X 1.00 M	0.0137	347				
4		274.00M X 1.00 M	0.0274	19				
5		234.00M X 1.00 M	0.0234	20	MAJJURU			
6		220.00M X 1.00 M	0.0220	10				
7		230.00M X 1.00 M	0.0230	11				
8		35.00M X 1.00 M	0.0035	20				
	GRAND TOTAL IN Ha		0.1648					



GPS DETAILS OF FOREST LAND DIVERSION IN F.Sy. No.347, 349, 348, 19,20 OF CHABBI VILLAGE & 10, 11,20 OF MAJJURU VILLAGE, KASABA HOBLI,SHIRAHATTI TALUK FOR CONSTRUCTION OF GRAVITY MAIN PIPE LINE IN CHABBI & MAJJURU FOREST. SHIRAHATTI RANGE, GADAG DIVISION. IN FAVOR OF KNNL, GADAG

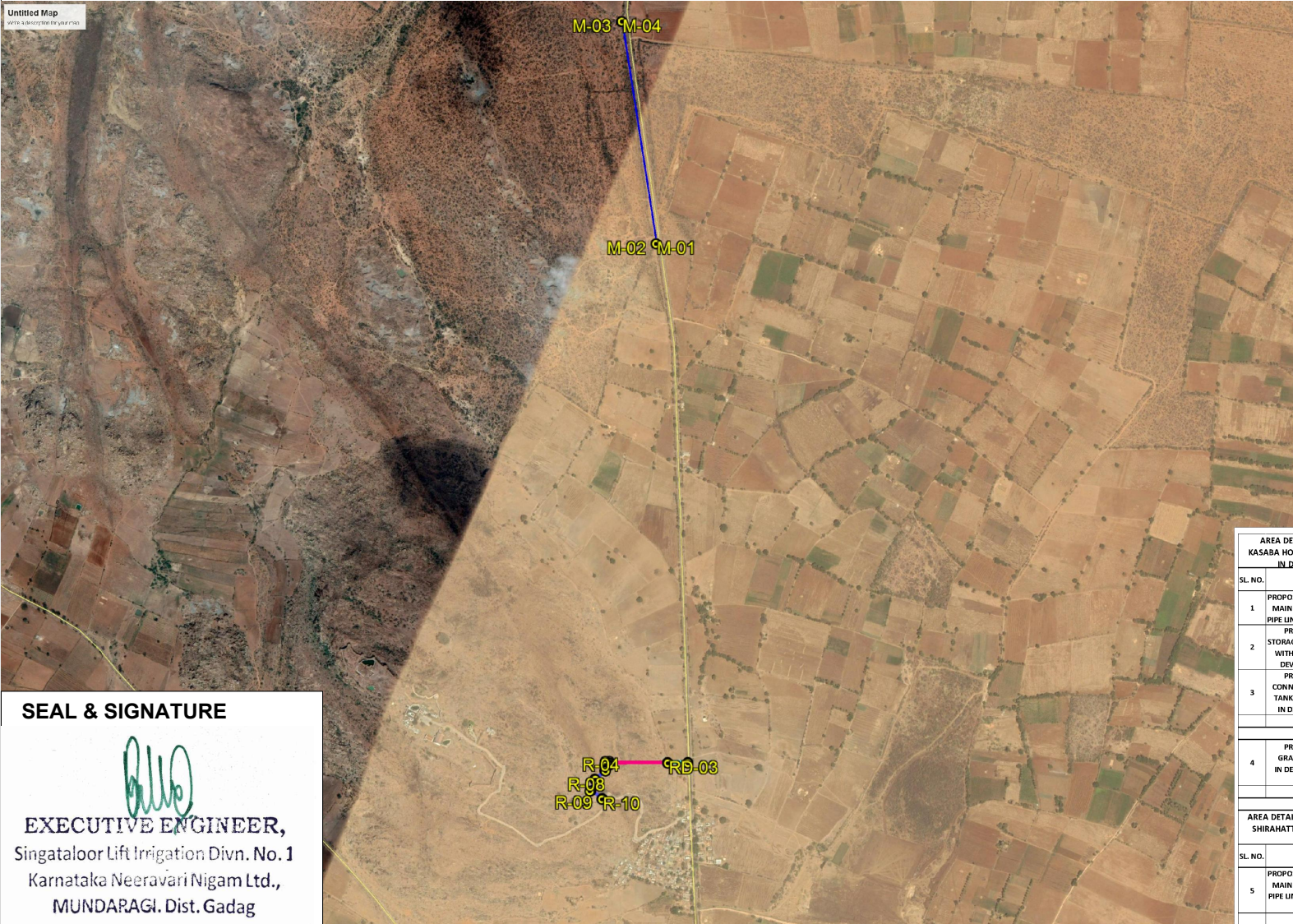
DATUM: WGS-84- hddd. dddd"				REMARKS
SL. NO.	GPS ID	NORTHING	EASTING	
1	M01	N15.17442	E75.61267	GPS POINTS OF PROPOSED GRAVITY MAIN PIPE LINE IN CHABBI FOREST
2	M02	N15.17441	E75.61267	
3	M03	N15.17523	E75.61476	
4	M04	N15.17524	E75.61476	
5	M05	N15.17576	E75.61580	
6	M06	N15.17575	E75.61581	
7	M07	N15.17607	E75.61704	
8	M08	N15.17608	E75.61704	
9	M09	N15.17600	E75.61804	
10	M10	N15.17599	E75.61803	
11	M11	N15.17526	E75.61945	
12	M12	N15.17527	E75.61946	
13	M13	N15.17413	E75.62208	
14	M14	N15.17412	E75.62208	
15	M15	N15.17398	E75.62332	
16	M16	N15.17399	E75.62332	
17	M17	N15.17397	E75.62474	
18	M18	N15.17396	E75.62474	
19	M19	N15.18143	E75.62544	GPS POINTS OF PROPOSED GRAVITY MAIN PIPE LINE IN MAJJURU FOREST
20	M20	N15.18143	E75.62545	
21	M21	N15.18191	E75.62498	
22	M22	N15.18191	E75.62497	
23	M23	N15.18307	E75.62590	
24	M24	N15.18306	E75.62590	
25	M25	N15.18321	E75.62731	
26	M26	N15.18322	E75.62731	
27	M27	N15.18487	E75.62997	
28	M28	N15.18486	E75.62997	

**SEAL & SIGNATURE**

**EXECUTIVE ENGINEER,**  
Singataloor Lift Irrigation Divn. No.1  
Karnataka Neeravari Nigam Ltd.,  
MUNDARAGI. Dist. Gadag



**THE GOOGLE MAP SHOWING THE AREA REQUIREMENT OF FOREST LAND DIVERSION IN F.Sy.No.168, 32, 50, 49 & 48 OF DEVIHALA VILLAGE, KASABA HOBBLI, SHIRAHATTI TALUK,GADAG DISTRICT FOR CONSTRUCTION OF STORAGE / DISTRIBUTOR TANK WITH INSPECTION PATH & RAISING MAIN & GRAVITY MAIN PIPE LINE IN DEVIHALA R.F. IN THE SCHEME OF SHIRAHATTI LIFT IRRIGATION IN SHIRAHATTI RANGE, GADAG DIVISION. -IN FAVOR OF KNNL, GADAG.**



GPS DETAILS OF FOREST LAND DIVERSION IN F.Sy. No.168, 32, 50, 49 & 48 OF DEVIHALA VILLAGE, KASABA HOBBLI, SHIRAHATTI TALUK FOR CONSTRUCTION OF STORAGE / DISTRIBUTOR TANK WITH INSPECTION PATH & RAISING MAIN AND GRAVITY MAIN PIPE LINE IN DEVIHALA FOREST, SHIRAHATTI RANGE, GADAG DIVISION. -IN FAVOR OF KNNL, GADAG.				
DATUM : WGS-84- hddd. dddd"				
SL. NO.	GPS ID	NORTHING	EASTING	REMARKS
1	R/D-1	N15.11656	E75.61822	GPS BOUNDARY POINTS OF PROPOSED RAISING MAIN PIPE & GRAVITY MAIN PIPE LINE IN FOREST
2	R/D-2	N15.11654	E75.61823	
3	R/D-3	N15.11633	E75.61772	
4	R/D-4	N15.11635	E75.61770	
5	R/D-5	N15.11575	E75.61620	
6	R/D-6	N15.11573	E75.61620	
7	T1	N15.11579	E75.61618	GPS POINTS OF STORAGE / DISTRIBUTOR TANK WITH INSPECTION PATH IN FOREST LAND
8	T2	N15.11569	E75.61622	
9	T3	N15.11564	E75.61612	
10	T4	N15.11574	E75.61608	
11	R1	N15.11567	E75.61619	GPS POINTS OF CONNECTIVITY ROAD FROM TANK TO EXISTING CC ROAD IN FOREST LAND
12	R2	N15.11566	E75.61616	
13	R3	N15.11550	E75.61616	
14	R4	N15.11550	E75.61619	
15	R5	N15.11518	E75.61602	
16	R6	N15.11519	E75.61599	
17	R7	N15.11483	E75.61599	
18	R8	N15.11486	E75.61602	
19	R9	N15.11478	E75.61639	
20	R10	N15.11476	E75.61640	
21	REF-01	N15.12044	E75.61136	GPS POINTS OF REFERENCE BAND POINTS AS PER IN FIELD
22	REF-02	N15.11936	E75.61439	
23	REF-03	N15.11536	E75.61831	
24	M01	N15.12917	E75.61189	GPS POINTS OF PROPOSED RAISING MAIN PIPE LINE IN FOREST
25	M02	N15.12917	E75.61188	
26	M03	N15.13436	E75.60862	
27	M04	N15.13437	E75.60863	

AREA DETAILS OF FOREST LAND DIVERSION IN F.Sy. No.168, 32, 50, 49 & 48 OF DEVIHALA VILLAGE, KASABA HOBBLI,SHIRAHATTI TALUK FOR CONSTRUCTION OF RAISING MAIN AND GRAVITY MAIN PIPE LINE IN DEVIHALA FOREST, SHIRAHATTI RANGE, GADAG DIVISION. -IN FAVOR OF KNNL, GADAG.									
SL. NO.	DESCRIPTION	SIZE (LENGTH X WIDTH) IN MTRS	EXTENT IN Ha.	F. SY. NO.	VILLAGE	HOBBLI	TALUK	DISTRICT	
1	PROPOSED AREA FOR RAISING MAIN & DISTRIBUTOR MAIN PIPE LINE IN DEVIHALA FOREST	176.00M X 2.50 M	0.0440						
2	PROPOSED AREA FOR STORAGE / DISTRIBUTOR TANK WITH INSPECTION PATH IN DEVIHALA FOREST LAND	12.00M X 12.00 M	0.0144						
3	PROPOSED AREA FOR CONNECTIVITY ROAD FROM TANK TO EXISTING CC ROAD IN DEVIHALA FOREST LAND	137.00M X 3.00 M	0.0411						
GRAND TOTAL IN Ha			0.0995						
4	PROPOSED AREA FOR GRAVITY MAIN PIPE LINE IN DEVIHALA FOREST LAND	102.00 M X 1.00 M 353.00 M X 1.00 M 66.00 M X 1.00 M 151.00 M X 1.00 M	0.0102 0.0353 0.0066 0.0151	32 50 49 48	DEVIHALA	KASABA	SHIRAHATTI	GADAG	
GRAND TOTAL IN Ha			0.0672						
AREA DETAILS OF NON-FOREST LAND REQUIRED FOR IN Sy. No.12 OF DEVIHALA VILLAGE,KASABA HOBBLI, SHIRAHATTI TALUK FOR CONSTRUCTION OF RAISING MAIN AND GRAVITY MAIN PIPE LINE IN DEVIHALA FOREST, SHIRAHATTI RANGE, GADAG DIVISION. -IN FAVOR OF KNNL, GADAG.									
SL. NO.	DESCRIPTION	SIZE (LENGTH X WIDTH) IN MTRS	EXTENT IN Ha.	F. SY. NO.	VILLAGE	HOBBLI	TALUK	DISTRICT	
5	PROPOSED AREA FOR RAISING MAIN & DISTRIBUTOR MAIN PIPE LINE IN DEVIHALA FOREST LAND	60.00M X 2.50 M	0.0150	12	DEVIHALA	KASABA	SHIRAHATTI	GADAG	
GRAND TOTAL IN Ha			0.0150						

**SEAL & SIGNATURE**

*[Signature]*

**EXECUTIVE ENGINEER,**  
Singataloor Lift Irrigation Divn. No.1  
Karnataka Neeravari Nigam Ltd.,  
MUNDARAGI. Dist, Gadag







**THE GOOGLE MAP SHOWING THE AREA REQUIREMENT OF FOREST LAND DIVERSION IN F.Sy. No. 7 OF HOSUR VILLAGE, KASABA HOBLI, SHIRAHATTI TALUK, GADAG DISTRICT FOR CONSTRUCTION OF RAISING MAIN PIPE LINE IN HOSUR R.F. IN THE SCHEME OF SHIRAHATTI LIFT IRRIGATION IN SHIRAHATTI RANGE, GADAG DIVISION. -IN FAVOR OF KNNL, GADAG.**



AREA DETAILS OF FOREST LAND DIVERSION IN F.Sy. No.7 OF HOSUR VILLAGE, KASABA HOBLI, SHIRAHATTI TALUK FOR CONSTRUCTION OF RAISING MAIN PIPE LINE IN HOSUR R.F. SHIRAHATTI RANGE, GADAG DIVISION. -IN FAVOR OF KNNL, GADAG.								
SL. NO.	DESCRIPTION	SIZE (LENGTH X WIDTH) IN MTRS	EXTENT IN Ha.	F. SY. NO.	VILLAGE	HOBLI	TALUK	DISTRICT
1	PROPOSED AREA FOR RAISING MAIN PIPE LINE IN FOREST AREA	448.00M X 1.00 M	0.0448	7	HOSUR	KASABA	SHIRAHATTI	GADAG
GRAND TOTAL IN Ha			0.0448					

GPS DETAILS OF FOREST LAND DIVERSION IN F.Sy. No.7 OF HOSUR VILLAGE, KASABA HOBLI, SHIRAHATTI TALUK FOR CONSTRUCTION OF RAISING MAIN PIPE LINE IN HOSUR R.F. SHIRAHATTI RANGE, GADAG DIVISION. -IN FAVOR OF KNNL, GADAG.				
Datum : WGS -84 - hddd. dddd°				
SL. NO.	GPS ID	NORTHING	EASTING	REMARKS
1	M1	N15.04801	E75.68347	GPS BOUNDARY POINTS OF PROPOSED RAISING MAIN PIPE LINE IN HOSUR FOREST AREA
2	M2	N15.04801	E75.68346	
3	M3	N15.04937	E75.68335	
4	M4	N15.04938	E75.68336	
5	M5	N15.05000	E75.68285	
6	M6	N15.04999	E75.68285	
7	M7	N15.05015	E75.68250	
8	M8	N15.05015	E75.68251	
9	M3	N15.04937	E75.68335	GPS BOUNDARY POINTS OF PROPOSED RAISING MAIN PIPE LINE IN HOSUR
10	M4	N15.04938	E75.68336	
11	M9	N15.04821	E75.68433	
12	M10	N15.04821	E75.68432	

VILLAGE : HOSUR.  
HOBLI : KASABA  
TALUK : SHIRAHATTI  
DISTRICT : GADAG

**SEAL & SIGNATURE**



**EXECUTIVE ENGINEER,**  
Singataloor Lift Irrigation Divn. No.1  
Karnataka Neeravari Nigam Ltd.,  
MUNDARAGI. Dist. Gadag



**THE GOOGLE MAP SHOWING THE AREA REQUIREMENT OF FOREST LAND DIVERSION IN F.Sy.No.54 OF NADIGATTI VILLAGE, KASABA HOBLI, LAKSMESHVARA TALUK, GADAG DISTRICT FOR CONSTRUCTION OF GRAVITY MAIN PIPE LINE IN NADIGATTI R.F. IN THE SCHEME OF SHIRAHATTI LIFT IRRIGATION IN LAKSMESHVARA RANGE, GADAG DIVISION. -IN FAVOR OF KNNL, GADAG.**

