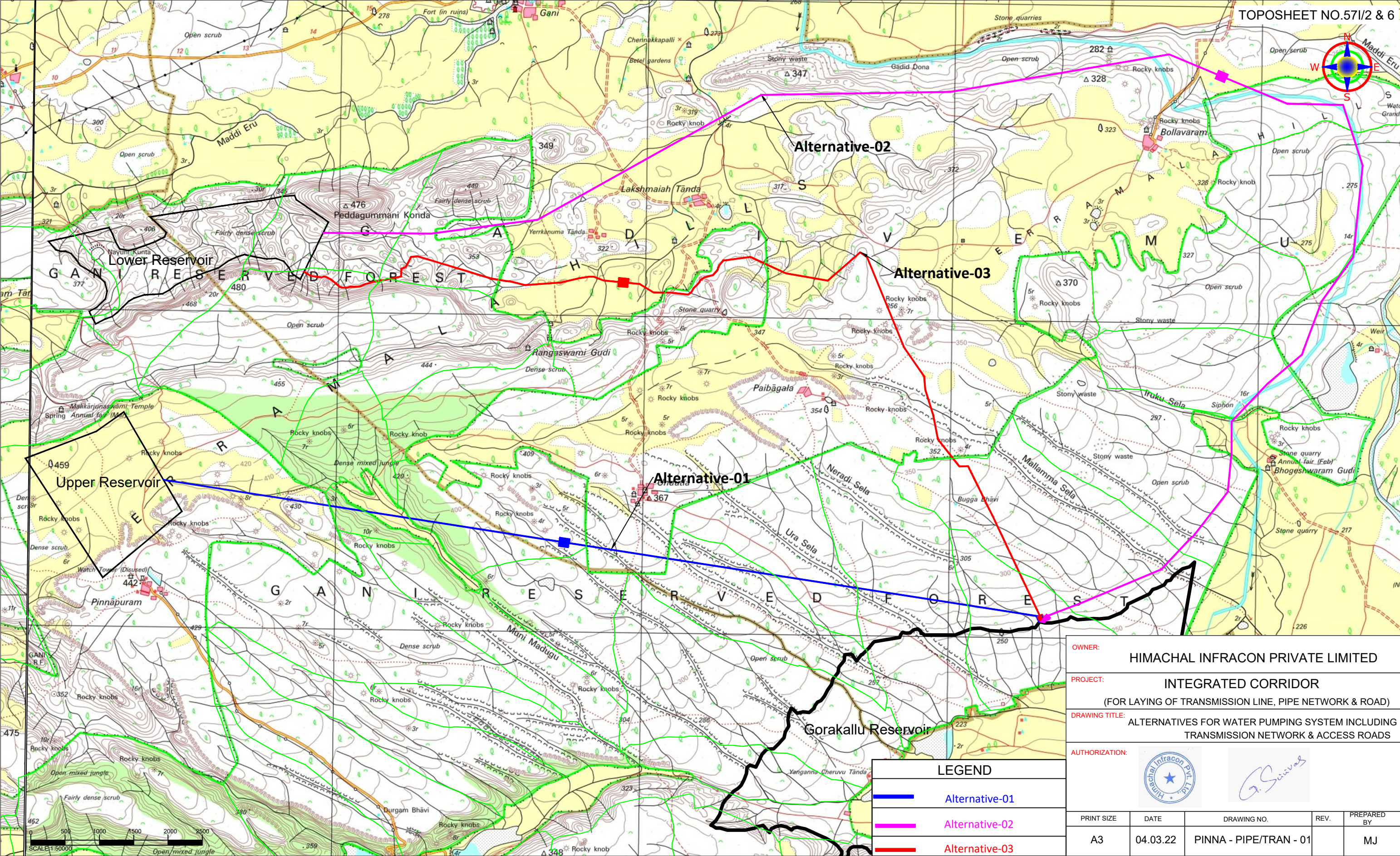




MAP SHOWING ALTERNATIVES FOR WATER PUMPING SYSTEM INCLUDING TRANSMISSION NETWORK & ACCESS ROADS



OWNER: HIMACHAL INFRACON PRIVATE LIMITED				
PROJECT: INTEGRATED CORRIDOR (FOR LAYING OF TRANSMISSION LINE, PIPE NETWORK & ROAD)				
DRAWING TITLE: ALTERNATIVES FOR WATER PUMPING SYSTEM INCLUDING TRANSMISSION NETWORK & ACCESS ROADS				
AUTHORIZATION:  				
PRINT SIZE	DATE	DRAWING NO.	REV.	PREPARED BY
A3	04.03.22	PINNA - PIPE/TRAN - 01		MJ