

Four Laning from Existing Km 182.195 to Km 219.956 (Design chainage from Km 182.556 to Km 224.000 of Sangli – Bargaon Section of NH – 166.

USER AGENCY : NATIONAL HIGHWAYS AUTHORITY OF INDIA - PIU SOLAPUR

विनिर्गत के लिए नहीं NOT FOR EXPORT

OPEN SERIES MAP

No. E43U9

Scale 1:50,000

E43O8 (47K/8)	E43O12 (47K/12) Sangli MAHARASHTRA	E43O16 (47K/16)
E43U5 (47L/5)	E43U9 (47L/9)	E43U13 (47L/13)
Kulharpur MAHARASHTRA E43U6 (47L/6)	E43U10 (47L/10)	E43U14 (47L/14) Bargaul KARNATAKA

1 Solapur, MAHARASHTRA.

भारतीय सर्वेक्षण विभाग SURVEY OF INDIA

1st Edition 2010. Price : Rs. 70/-

- CONVENTIONAL SYMBOLS
- Express highway with toll with bridge with distance stone
 - Roads, double category according to importance
 - Unimproved road, Cart-track, Road with pass, Foot-path
 - Stream with track in bed, water level, Canal
 - Canal, temporary or rock-lined, dry, water
 - Railway, other gorges, double single with distance stone
 - Wells, lined, unlined, Tube-well, Spring, Tanks, perennial, dry
 - Endowment, road or not, bank, River, ground
 - Highway, level, grade, double single with distance stone
 - Railway, other gorges, double single with distance stone
 - Mineral line or tramway, K.M. Cutting with tunnel
 - Contours with tick marks, Rocky slopes, Cliffs
 - Sand dunes (1:50,000), (1:25,000), (1:10,000)
 - Trees or thicket, (1:50,000), (1:25,000), (1:10,000)
 - High permanent, temporary, Tower, Antenna
 - Temples, Ghats, Church, Mosque, Jugal, Tomb, Grave
 - Lighthouse, Light, Signal, Lighted, Anchorage
 - Mini, line, track, Green, Sand
 - Palms, papyrus, other, Forest, Conifer, Deciduous, Other trees
 - Areas, cultivated, wooded, Surveyed trees
 - Boundary, international
 - State, international, international
 - State, international, international
 - Boundary, international, international
 - Height, triangulation station, point, approximate
 - Bench mark, geodetic, tertiary, canal
 - Post office, (1:50,000), (1:25,000), (1:10,000)
 - Rail houses or inspection, Central house, Police station
 - Camping ground, Forest, reserved, protected
 - Special name, administrative, locality or village
 - Highway, (1:50,000), (1:25,000), (1:10,000)
 - Airplane, Helicopter, Transport
 - Power line, with poles, surveyed, with poles, unsurveyed

NOTES :-

Heights are in metres and above Indian mean sea level

Contours are approximate

The triangulation heights and contours in this sheet have not been adjusted to the heights of the earth

Traverse, shown only, in the area usually correct to within 100 metres

All unimproved roads are indicated and are shown in dry season

A is the height, B is the height, C is the height, D is the height, E is the height, F is the height, G is the height, H is the height, I is the height, J is the height, K is the height, L is the height, M is the height, N is the height, O is the height, P is the height, Q is the height, R is the height, S is the height, T is the height, U is the height, V is the height, W is the height, X is the height, Y is the height, Z is the height

COMPILED INDEX

A. Compiled from 1:250,000 survey, 1972-73 and 1:50,000 survey, 1975-76

B. Surveyed during 1975-76

Projection - UTM Datum - WGS 84

Magnetic Variation from True North about 11° West in 1995

Decreases to about 7° annually

1:50,000

Scale 1:50,000

CONTOUR INTERVAL 20 METRES

For further details about this map, please contact

Director

Maharashtra & Goa Geo-Spatial Data Centre

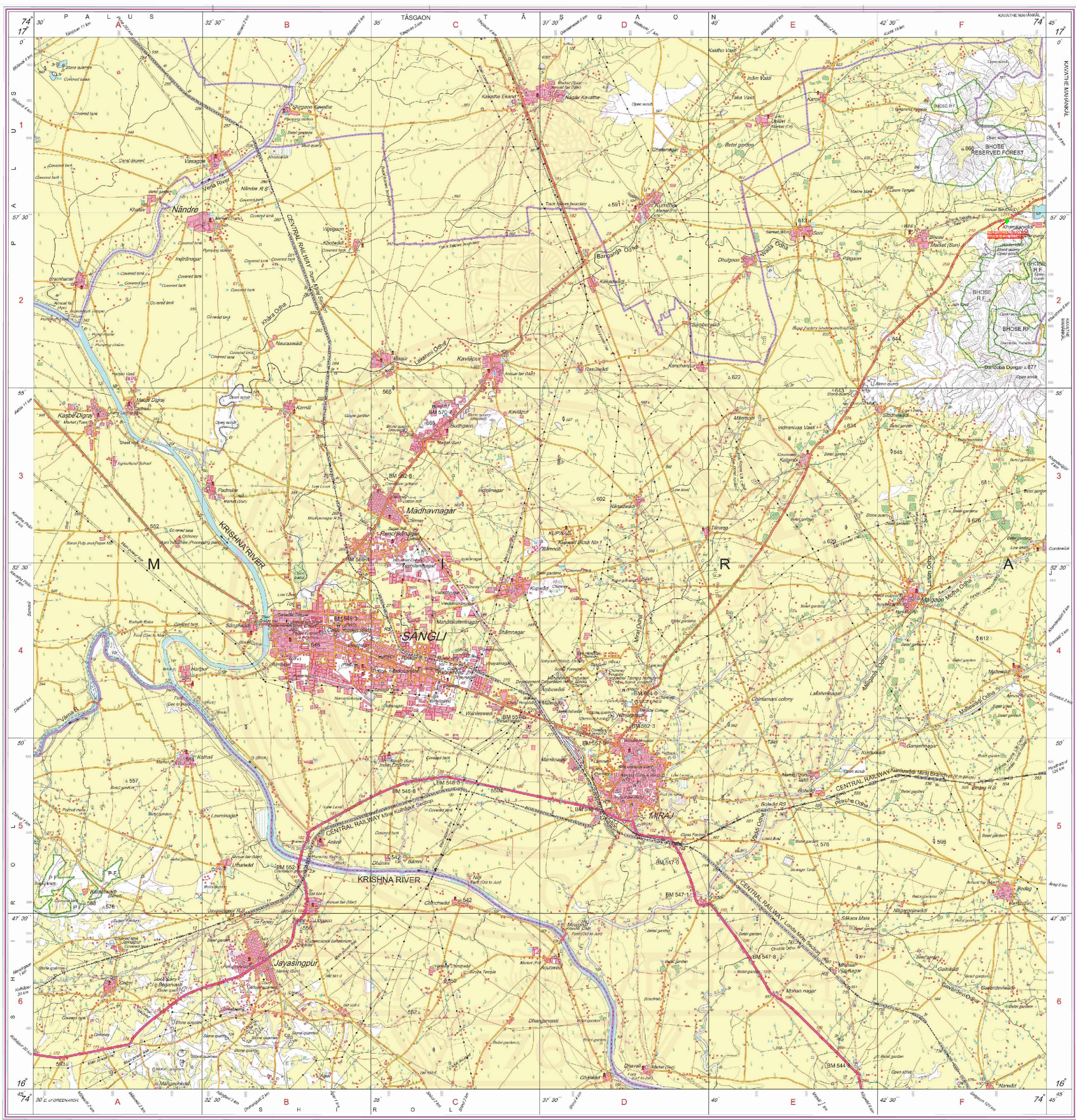
Survey of India, Phulnagar, Ahmed Road

Pune.

WEBSITE : www.surveyofindia.gov.in

Reproduction in whole or part by any means is prohibited without the written permission of Survey of India, the National Mapping Agency.

GOVERNMENT OF INDIA COPYRIGHT 2010.



REPRODUCED FROM THE SURVEY OF INDIA MAPS

MAHARASHTRA & GOA GEO-SPATIAL DATA CENTRE

SURVEY OF INDIA, PHULNAGAR, AHMED ROAD, PUNE.

PRINTED AT THE SOUTH EAST PRINTING GROUP OF SURVEY OF INDIA.

USER AGENCY : NATIONAL HIGHWAYS AUTHORITY OF INDIA - PIU SOLAPUR

