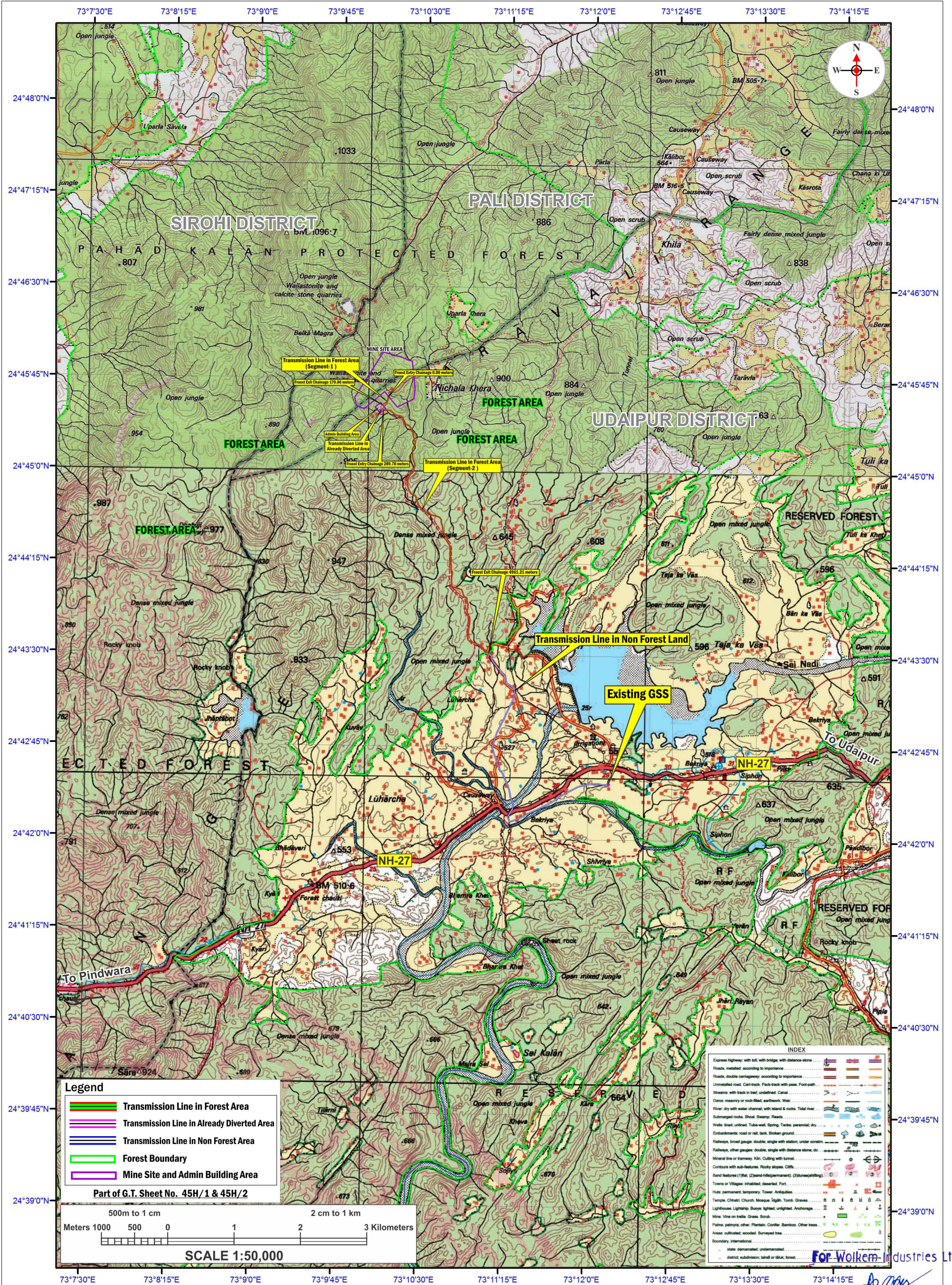


**MAP SHOWING GEO REFERENCED SOI TOPOSHEET MAP WITH PROPOSED TRANSMISSION LINE ALIGNMENT**

Project Name : Construction of 11 KV HT line from 33/11 KV Bekariya Substation to Wolkem Industries Ltd. Kheratarla Mine Situated near Uparla and Nichala Khera, Tehsil - Bali & Kotra , Dist. - Pali & Udaipur, Raj.

Proposal No. : FP/R J/TRANS/142368/2021 (Applied Area - 3.3896 Hectare)



**Legend**

- Transmission Line in Forest Area
- Transmission Line in Already Diverted Area
- Transmission Line in Non Forest Area
- Forest Boundary
- Mine Site and Admin Building Area

Part of G.T. Sheet No. 45H/1 & 45H/2

500m to 1 cm      2 cm to 1 km

Meters 1000 500 0 1 2 3 Kilometers

**SCALE 1:50,000**

**INDEX**

Express highway, with toll, with bridge, with distance stone	
Roads, metalled, according to importance	
Roads, double cartway, according to importance	
Unmetalled road, Cart-track, Pack-track with pass, Foot-path	
Streams, with track in bed, undefined, Canal	
Dams, masonry or rock-filled, earthenwork, Weir	
River, dry with water channel, with island & rocks, Tidal river	
Submerged rocks, Shoal, Swamp, Reeds	
Wells, lined, unlined, Tube-well, Spring, Tanks, perennial, dry	
Embankments: road or rail, bank, Broken ground	
Railways, broad gauge, double, single with station, under constn.	
Railways, other gauge: double, single with distance stone, do.	
Mineral line or tramway, Kin, Cutting with tunnel	
Contours with sub-features, Rocky slopes, Cliffs	
Sand features: (1)flat, (2)band-hill(permanent), (3)hills(spring)	
Towns or Villages: inhabited, deserted, Fort	
Huts: permanent, temporary, Tower, Antiquities	
Temple, Chhatra, Church, Mosque, Igloo, Tomb, Graves	
Lighthouse, Lightship, Buoy: lighted, unlighted, Anchorage	
Mine, Ore on trails, Grass, Scrub	
Palms: palmyra; other, Plantain, Conifer, Bamboo, Other trees	
Areas: cultivated, wooded, Surveyed tree	
Boundary, international	
state, demarcated, undemarcated	
district, subdivision, taluk or taluk, forest	

For Wolkem Industries Ltd.

*[Signature]*  
**DIRECTOR**