

MAPS

Village Map Showing Diversion of Forest Land For Laying of OFC Duct & Cable Within ROW of Existing Road Patan to Shevalwadi, Tal- Patan & Karad, Dist- Satara.



Legend

- OFC in ROW of Road
- in Forest Land
- OFC in ROW of Road
- in Non-Forest Land

Symbol	Description
○	Water
○	Well
○	Open Well
○	Hand Pump
○	Electric Pump
○	Water Tank
○	Water Treatment Plant
○	Water Distribution Point
○	Water Meter
○	Water Valve
○	Water Stop
○	Water Tap
○	Water Connection
○	Water Pipe
○	Water Main
○	Water Branch
○	Water Outlet
○	Water Inlet
○	Water Junction
○	Water Crossing
○	Water Overhead Tank
○	Water Underground Tank
○	Water Reservoir
○	Water Dam
○	Water Barrage
○	Water Weir
○	Water Sluice
○	Water Lock
○	Water Gate
○	Water Dam
○	Water Barrage
○	Water Weir
○	Water Sluice
○	Water Lock
○	Water Gate



No. E43N15
Scale 1:50,000

E43N10 (47G/10) Ratnagiri MAHARASHTRA	E43N14 (47G/14) Sikara MAHARASHTRA	E43O2 (47K/2)
E43N11 (47G/11)	E43N15 (47G/15)	E43O3 (47K/3)
E43N12 (47G/12)	E43N16 (47K/16)	E43O4 (47K/4) Sangli MAHARASHTRA

1 Kolhapur, MAHARASHTRA.

भारतीय सर्वेक्षण विभाग SURVEY OF INDIA

1st Edition 2011. Price: ₹ 77/-

CONVENTIONAL SYMBOLS

- Express highway; with toll; with bridge; with distance stone
- Roads, metalled; according to importance
- Roads, double carriageway; according to importance
- Unmetalled Road, Cart-track, Pack-track with pass, Foot-path
- Streams; with track in bed; undefined, Canal
- Dam; masonry or rock-filled; earthwork, Wall
- River; dry with water channel; with island & rocks, Tidal river
- Submerged rocks, Shoal, Swamp, Reeds
- Wells; lined; undefined, Tube-well, Spring, Tanks; permanent; dry
- Embankments; road or rail; tanks, Broken ground
- Railways, broad gauge; double; single with distance stone; do
- Railways, other gauges; double; single with distance stone; do
- Mineral line or tramway, Kin, Cutting with tunnel
- Contours with sub-features, Rocky slopes, Cliffs
- Sand features; (Flat, Dune-hills, permanent), (Dunes, shifting)
- Towns or Villages; inhabited; deserted, Fort
- Hole; permanent; temporary, Tower, Antenna
- Temples, Church, Mosque, Light, Tomb, Tower
- Lighthouses, Lightships, Buoys; lighted; unlighted, Anchorage
- Mine; View on trails, Grass, Scrub
- Palms; palmyra; other, Plantain, Conifer, Bamboo, Other trees
- Areas, cultivated; wooded, Surveyed tree
- Boundary, international
- state; demarcated; undemarcated
- district; subdivision, taluk or taluk; forest
- Boundary, pillars; surveyed; unlocated
- Height, triangulated; station; point; approximate
- Bench-mark; geodetic; tertiary; canal
- Post office, Overhead tank
- Rest house or inspection bungalow, Circuit house, Police station
- Camping ground, Forest; reserved; protected
- Speed names; administrative; locality or tribal
- Hospital, Dispensary, Veterinary; Hospital / Dispensary
- Aerodrome, Helipad, Tourist site
- Power line; with pylons surveyed; with poles unsurveyed

NOTES :-

Heights are in metres and above Indian mean sea level.
Contours are approximate.
A relative height, e.g., 50, represents the approximate height, in metres, between the top and bottom of a steep slope.
Inhabited buildings are shown in black.
Unmetalled roads are generally motorable and cart-tracks are jeppable in dry season.
The triangulated heights and contours in this sheet have not been adjusted to the heights of the spirit-levelled bench marks and may not be strictly in accordance with them.
This sheet has been compiled from 1:25,000 sheets.

COMPILATION INDEX

A. Surveyed during 1963-64, Updated for major details during 2005-06.

Projection - UTM Datum - WGS 84

Magnetic Variation from True North about 1 1/4 West in 2005.



For further details about this map, please contact
Director,
Maharashtra & Goa Geo-Spatial Data Centre,
Survey of India, Phule Nagar, Alandi Road,
Pune.

WEBSITE - www.surveyofindia.gov.in

Reproduction in whole or part by any means is prohibited
without the written permission of Survey of India, the
National Mapping Agency.

GOVERNMENT OF INDIA COPYRIGHT, 2011.

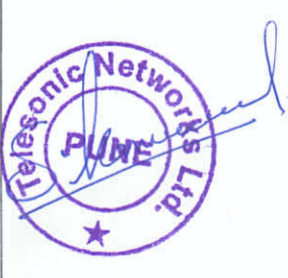


REG. No. -SPG D/11 (Maharashtra & Goa GDC-1:50,000)

भारत के महासर्वेक्षण सर्वेक्षण विभाग, बी.ई., के निदेशन में प्रकाशित,
Published under the direction of Swarna Subba Rao, B.E., Surveyor General of India,
Survey of India, Hithibarkala Estate, Post Box No. 37, Dehra Dun - 248009 (Uttarakhand)
Department of Science & Technology, Government of India.

Legend
 OFC in ROW of Road in Forest Land
 OFC in ROW of Road in Non-Forest Land

PRINTED AT THE SOUTHERN PRINTING GROUP OF SURVEY OF INDIA.



E43N15	E43O3	E43O7
Sátara MAHARASHTRA		
E43N16	E43O4	E43O8
Sangli MAHARASHTRA		
E43T13	E43U1	E43U5
Kolhapur MAHARASHTRA		

1 Ratnagiri, MAHARASHTRA.

भारतीय सर्वेक्षण विभाग SURVEY OF INDIA

1st Edition 2009. Price : Rs. 50/-

CONVENTIONAL SYMBOLS

- Express highway: with toll; with bridge; with distance stone
- Roads, metalled: according to importance
- Roads, double carriageway: according to importance
- Unmetalled road: Cart-track; Pack-track with pass; Foot-path
- Streams: with track in bed; undefined; Canal
- Dams: masonry or rock-filled; earthwork; Weir
- River: dry with water channel; with island & rocks; Tidal river
- Submerged rocks; Shoal; Swamp; Reeds
- Wells: lined; unlined; Tube-well; Spring; Tanks: perennial; dry
- Embankments: road or rail; tank; Broken ground
- Railways, broad gauge: double; single with station; under constn
- Railways, other gauges: double; single with distance stone, do
- Mineral line or tramway: Kin; Cutting with tunnel
- Contours with sub-levels: Rocky slopes: Cliffs
- Sand features (1 feet (2sand-hill/penamneri); (2) dunes/shifting)
- Towns or Villages: inhabited; deserted; Fort
- Huts: permanent; temporary; Tower; Antiquities
- Temples; Chhatri; Church; Mosque; Ghat; Tomb; Graves
- Lighthouse; Buoy; Lighted; unlighted; Anchorage
- Mine: Vine on malle; Grass; Scrub
- Palms: palmyra; other; Plantain; Conifer; Bamboo; Other trees
- Areas: cultivated; wooded; Surveyed tree
- Boundary: international
- state: demarcated; undemarcated
- district: subdivision; taluk; or taluk; forest
- Boundary pillars: surveyed; uncollocated
- Heights, triangulated: station; point; approximate
- Bench-mark: geodetic; tertiary; canal
- Post office; Telegraph office; Overhead tank
- Rest house or inspection bungalow; Circuit house; Police station
- Camping ground: Forest; reserved; protected
- Spaced names: administrative; locality or tribal
- Hospital; Dispensary; Veterinary hospital
- Aerodrome; Helipad; Tourist site
- Power line: with pylons surveyed; with poles unsurveyed

REFERENCES

NH 4 National Highway No. 4. CR Central Railway.

NOTES :-

Contours are approximate.
 Heights are in metres and above Indian mean sea level.
 A relative height, 'r', represents the approximate height, in metres, between the top and bottom of a steep slope.
 The triangulated heights and contours in this sheet have not been adjusted to the heights of the spirit-levelled bench-marks and may not be strictly in accordance with them.
 Wells are numerous throughout the sheet; only the important ones have been shown.
 Unmetalled roads are generally not shown in dry season.
 Tanks, shown dry, in this area usually contain water from June to January.
 Hand pump shown thus

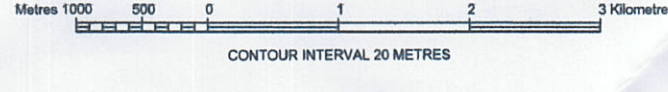
COMPILATION INDEX

A	Surveyed during 1991-92. Updated for major details during 2005-06.
---	--

Projection - UTM Datum - WGS 84

Magnetic Variation from True North about 1 1/2° West in 2005.
 (Decreasing by about 1" annually).

Scale 1:50,000



For further details about this map, please contact
 Director
 Maharashtra & Goa Geo-Spatial Data Centre
 Survey of India, Phulnagar, Alandi Road
 Pune.
 Fax : 020 - 26614665

WEBSITE - www.surveyofindia.gov.in

Reproduction in whole or part by any means is prohibited without the written permission of Survey of India, the National Mapping Agency.

GOVERNMENT OF INDIA COPYRIGHT, 2009.



REG. No. - WPG D76 (Maharashtra & Goa GDC-1:50,000). भारत के सर्वेक्षण के विभाग ने प्रकाशित, Published under the direction of Surveyor General of India, Survey of India, Hattibankala Estate, Post Box No.37, Dehra Dun-248001 (Uttarakhand) Department of Science & Technology, Government of India. PRINTED AT THE WESTERN PRINTING GROUP OF SURVEY OF INDIA

Toposheet Map Showing Diversion of Forest Land For Laying of OFC Duct & Cable Within ROW of Existing Road Patan to Shevalwadi, Tal- Patan & Karad, Dist- Satara.

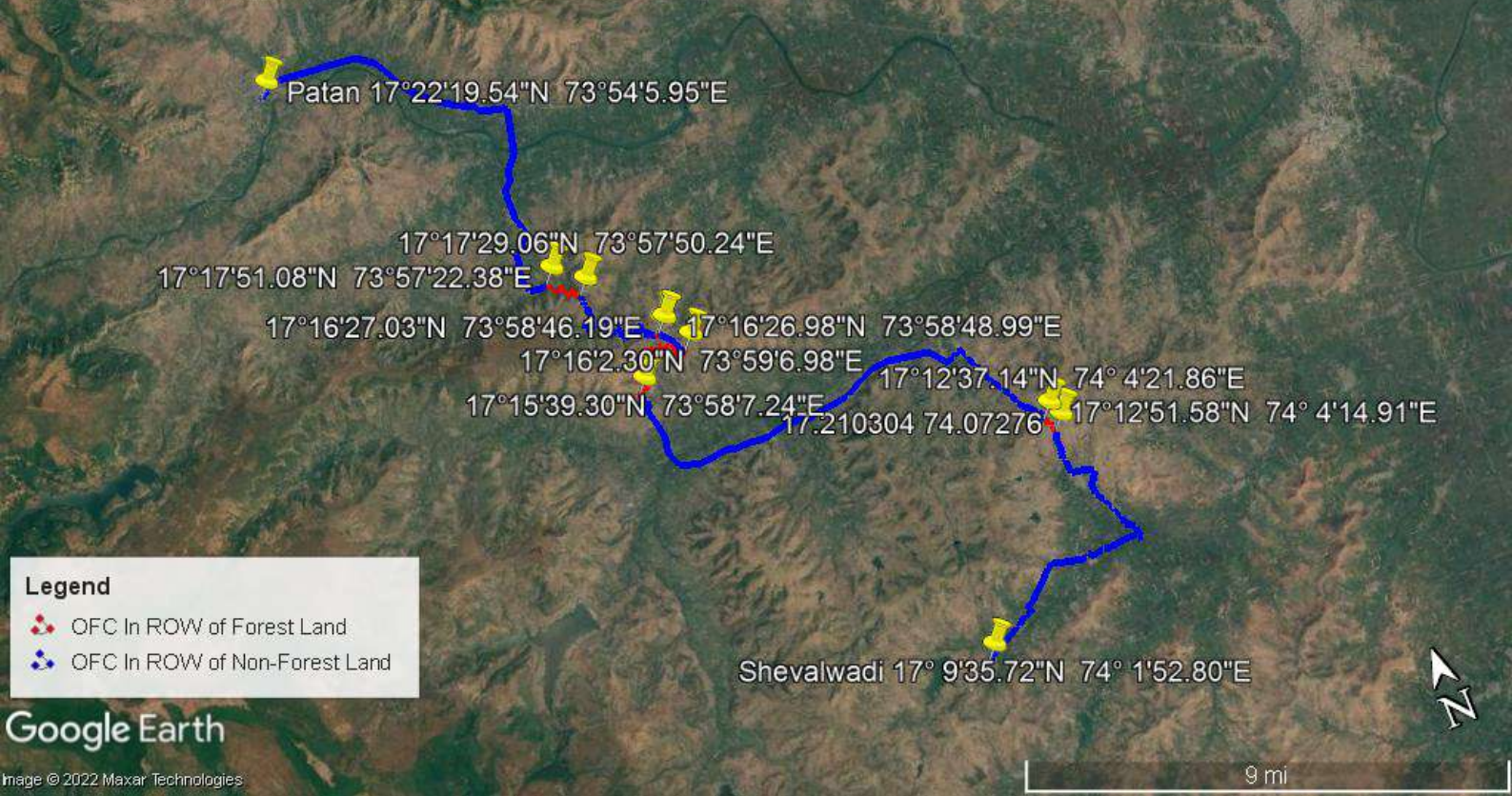


Legend

- OFC in ROW of Road In Forest Land.
- OFC in ROW of Road In Non-Forest Land

Geo Reference Map Showing Diversion of Forest Land For Laying of OFC Duct & Cable Within ROW of Existing Road Patan to Shevalwadi, Tal- Patan & Karad, Dist- Satara

Address description for your map



Legend

- OFC In ROW of Forest Land
- OFC In ROW of Non-Forest Land

Google Earth

Image © 2022 Maxar Technologies

9 mi