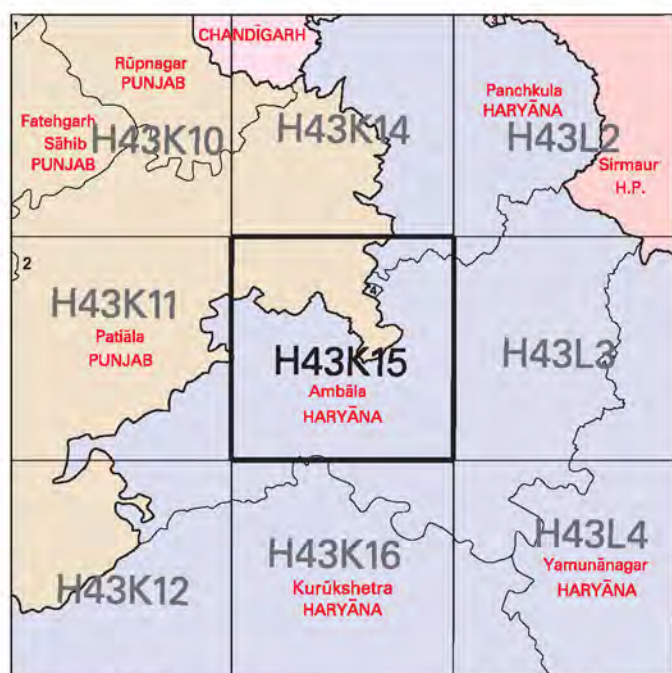


NOT FOR EXPORT

OPEN SERIES
MAP

No. H43K15

Scale 1:50,000



1 Rūpnagar, PUNJAB.	3 Solan, HIMĀCHAL PRADESH.
2 Fatehgarh Sahib, PUNJAB.	4 Panchkula, HARYĀNA.

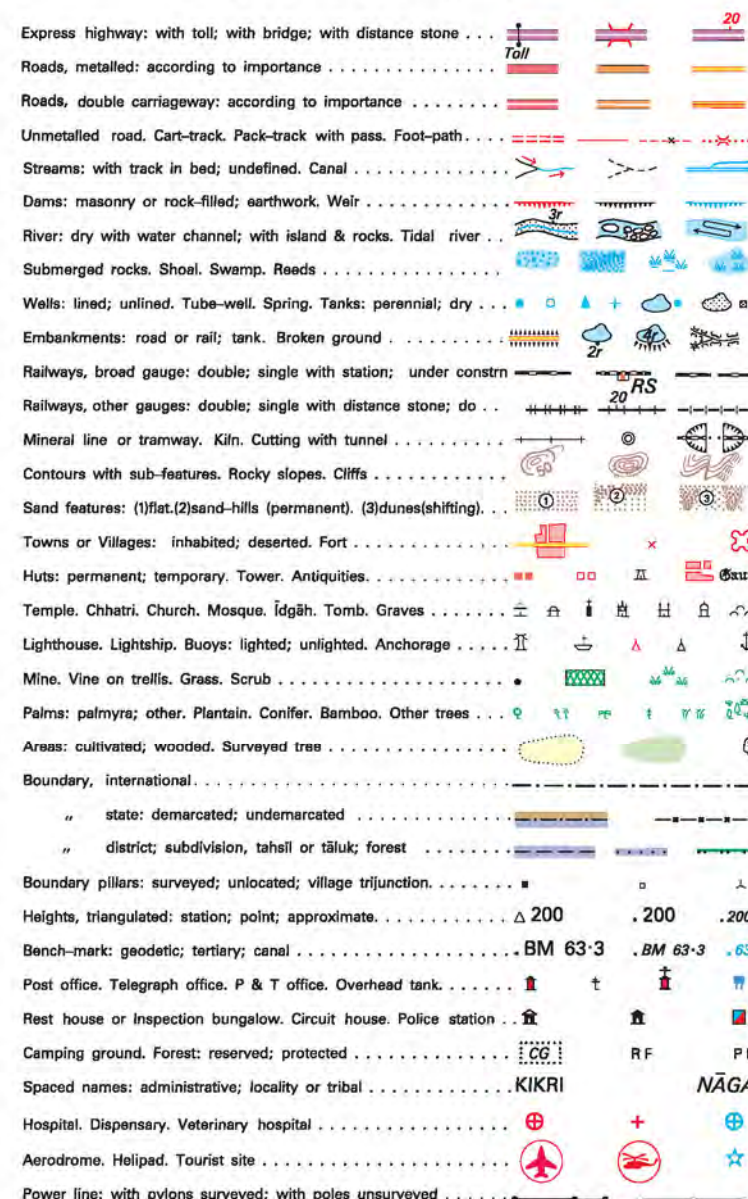
भारतीय सर्वेक्षण विभाग

SURVEY OF INDIA

1st Edition 2006.

Price : Rs. 50/-

CONVENTIONAL SYMBOLS



REFERENCES

NH-1 National Highway No. 1

NOTES :-

heights and contours are in metres and above Indian mean sea level.

Contours are approximate.

The course of Dangl Nadi, Ghagghar and Milkandwa Rivers are liable to continual change owing to shifting of the river bed.

Tanks shown dry, in this area usually contain water from July to March.

Tube-wells are numerous throughout the sheet, only the important ones have been shown.

Unsettled roads and cut-tracks in this sheet are generally motorable in dry season. Permission to use roads during rains and over embankments is required from the Irrigation authorities.

The triangular heights shown in contours in this area have not been adjusted to the heights of spirit-levelled bench-marks and may not be in accordance with height.

The administrative boundaries and names have been brought up-to-date to 2002.

The state boundary between Punjab and Haryana States has been surveyed as pointed out by the local officials on the ground but has not been verified by the Governments concerned.

COMPILATION INDEX

A. Compiled from 1:25,000 survey of 1997-98

Projection – UTM Datum – WGS 84

Magnetic Variation from True North about 1° East in 2000.
(Increase by about $1'$ annually)

1:50,000

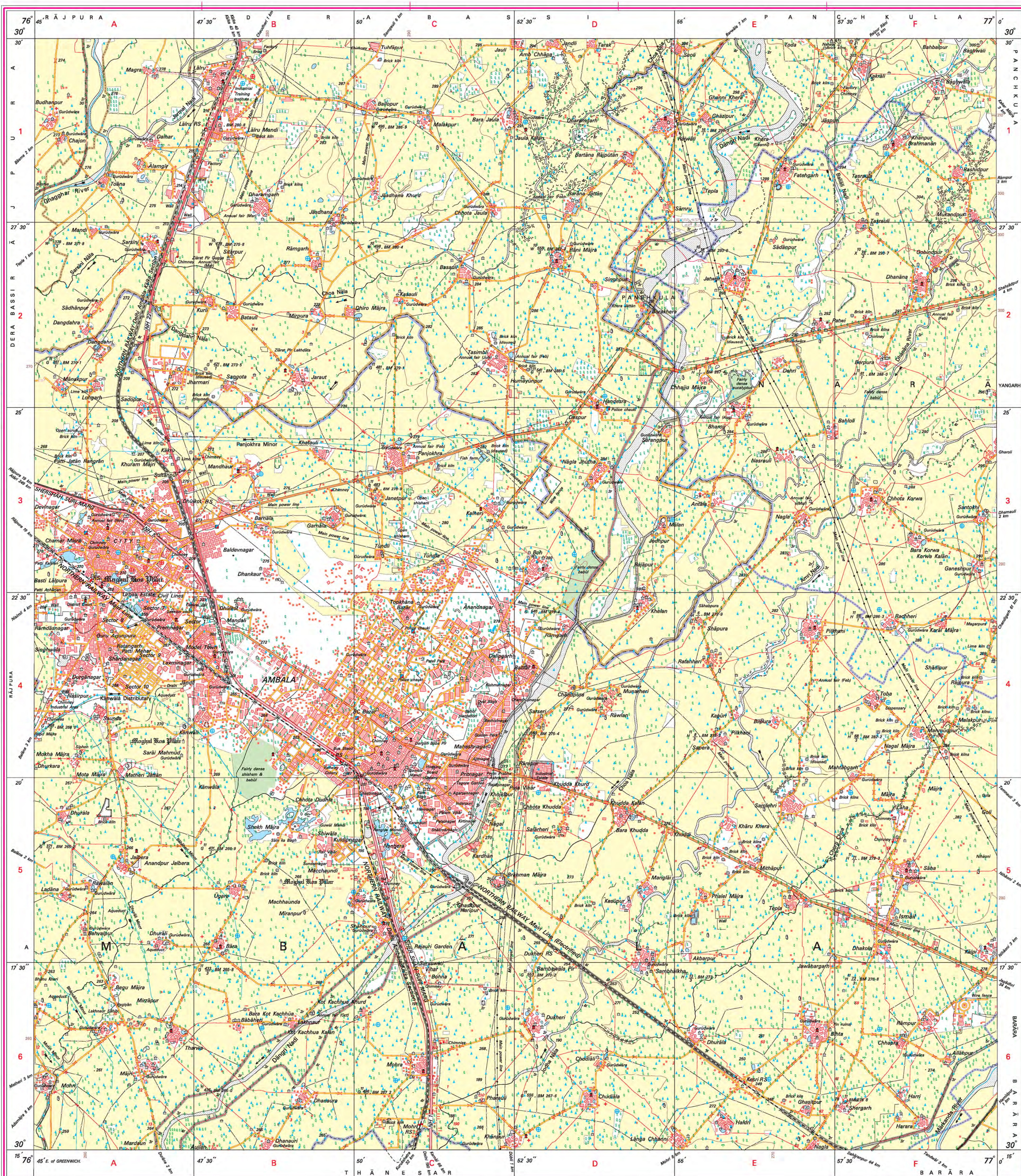
For further details about this map, please contact

Punjab & Chandigarh Geo-Spatial Data Centre
Survey of India, Sector 32 A
Chandigarh.
Fax : 0172 - 2606916

WEBSITE – www.surveyofindia.gov.in

Reproduction in whole or part by any means is prohibited without the written permission of Survey of India, the National Mapping Agency.

© GOVERNMENT OF INDIA COPYRIGHT, 2006



REG. No. -WPG D 06 (P&C GDC-1:50,000)

भारत के महासर्वेक्षक मेजर जनरल एम० गोपाल राव, बी०टेक०, पी. जी. डिप्लो (एरियल फोटो), एम०आईएएमआईए, एम०सीएए, एफ०आईएएस, के निवेदन से प्रकाशित,
Published under the direction of Major General M. Gopal Rao, B.Tech., P.G.Dip. (Aerial Photo), MIM, MCA, FIS, Surveyor General of India
Survey of India, Hāthibarkala Estate, Post Box No. 37, Dehra Dūn - 248001 (Uttarānchal)
Department of Science & Technology, Government of India.

PRINTED AT THE WESTERN PRINTING GROUP OF SURVEY OF INDIA