



निर्यात के लिए नहीं NOT FOR EXPORT

OPEN SERIES
MAP

No. G45J8

Scale 1:50,000

G45J3 (72N/3)	G45J7 (72N/7)	G45J11 (72N/11)
G45J4 (72N/4)	G45J8 (72N/8)	G45J12 (72N/12)
G45P1 (72O/1)	G45P5 (72O/5)	G45P9 (72O/9)

भारतीय सर्वेक्षण विभाग

SURVEY OF INDIA

1st Edition 2009.

Price : Rs. 50 / -

CONVENTIONAL SYMBOLS

Express highway: with toll; with bridge; with distance stone
Roads, metalled: according to importance
Roads, double cartways: according to importance
Unmetalled road, Cart-track, Pack-track with pass, Foot-path
Stream: with track in bed; unforded; Canal
Dam: masonry or rock-filled; earthwork; Weir
River: dry with water channel; with island & rocks; Tidal river
Submerged rocks, Shoal, Swamp, Reeds
Wells: lined; unfired; Tubewell; Spring; Tanks: perennial; dry
Embankments: road or rail; tank; broken ground
Railways, broad gauge: double; single with station; under construction
Railways, other gauges: double; single with station; do
Mineral line or tramway, R.R. Cutting with tunnel
Contours with sub-features, Rocky slopes, Cliffs
Sand features: (If flat) (Dune) (Hill) (Dune) (Hill) (Hill)
Towns or Villages: inhabited; deserted; Fort
Hut: permanent; temporary; Tower, Antiquities
Temple, Chhatra, Church, Mosque, Idgah, Tomb, Graves
Lighthouse, Lightship, Buoy: lighted; unlighted; Anchorages
Mine, Vine on trellis, Grass, Scrub
Palms: Palmyra; other, Plantain, Conifer, Bamboo, Other trees
Areas: cultivated; wooded; Surveyed tree
Boundary, International
State: demarcated; undemarcated
District: subdivision; taluk or tehsil; forest
Boundary pillars: surveyed; unlocated
Height: triangulated; station point; approximate
Bench-mark: geodetic; tertiary; canal
Post office Telegraph office, Overhead tank
Rail house or inspection bungalow, Circuit house, Police station
Camping ground, Forest: reserved; protected
Spaced names: administrative; locality or tribal
Hospital, Dispensary, Veterinary, Hospital / Dispensary
Aerodrome, Helipad, Tourist site
Power line: with pylon surveyed; with poles unsurveyed

REFERENCE

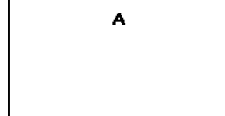
HY 57 National Highway No. 57

NOTES :-

Height and Contour have not been shown.
A relative height, e.g., -20, represents the approximate height, in metres, between the top and bottom of a steep slope.
The kilometre stone numbers along roads, railway and canals are shown in alert type, e.g., 5' where the collection numbers are shown in upright type, e.g., 5'.
A relative height, e.g., -20, marked along a canal, indicates the height of the top of the canal embankment above the adjacent country.

COMPILATION INDEX

A. Surveyed during 1971-72. Updated for major details during 2005-06.



Projection - UTM Datum - WGS 84

Magnetic Variation from True North about 1/4° West in 2005.

1:50,000

500 m to 1 km 2 cm to 1 km 3 Kilometres

For further details about this map, please contact

Director

Bihar Geo-Spatial Data Centre

Survey of India, 164, Sheikhpura House, Sheikhpura

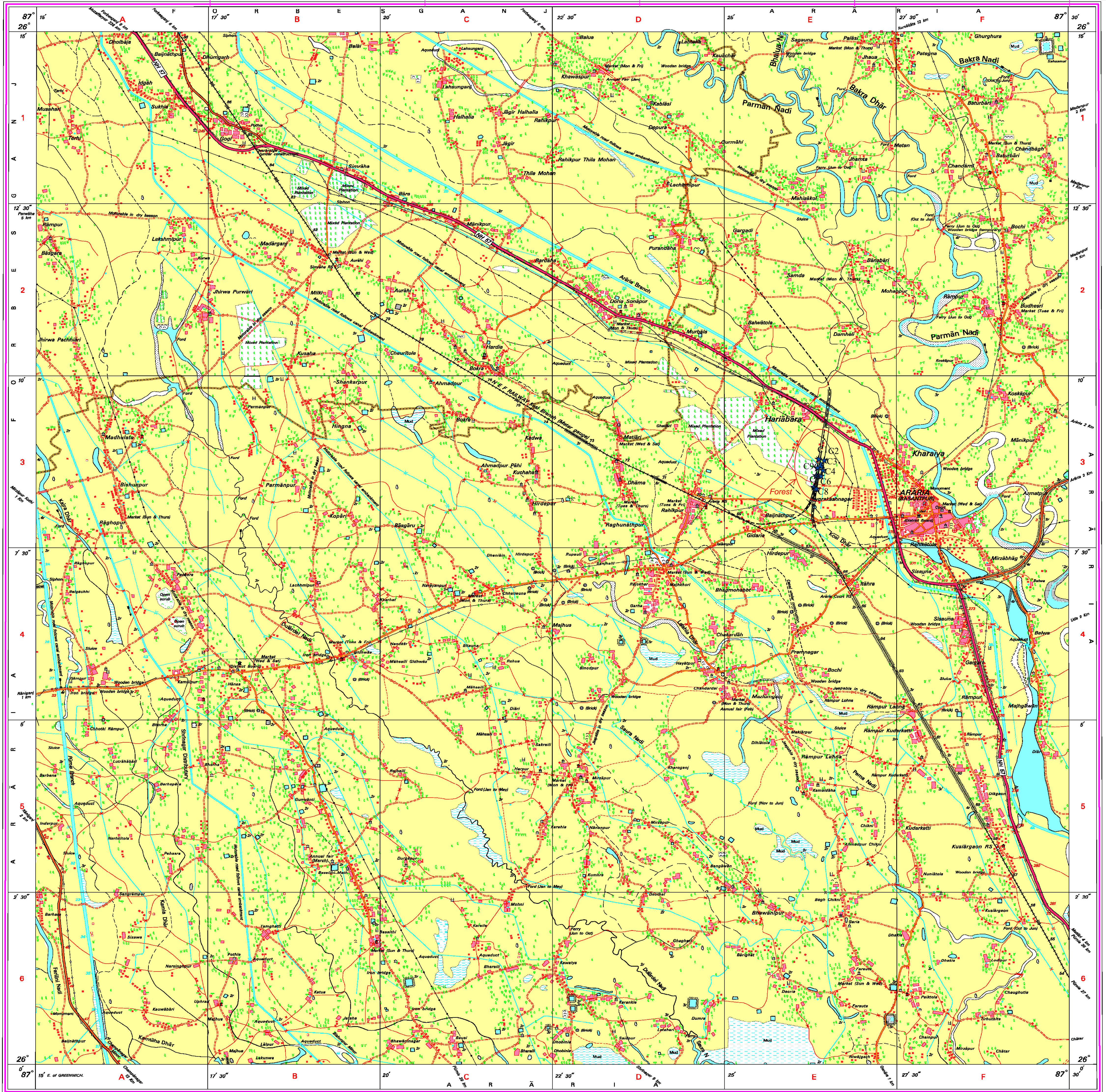
Patna - 800014

Fax : 0612 - 2280265

WEBSITE - www.surveyofindia.gov.in

Reproduction in whole or part by any means is prohibited without the written permission of Survey of India, the National Mapping Agency.

GOVERNMENT OF INDIA COPYRIGHT, 2008.



REG. No. -WPD 059/Bihar GDC-1502(000)-

भारत के सर्वेक्षक के निदेशन में प्रकाशित,
Published under the direction of Surveyor General of India,
Survey of India, Hathi Bunkaria Estate, Post Box No. 37, Dehra Dun - 248001 (Uttarakhand),
Department of Science & Technology, Government of India.

PRINTED AT THE WESTERN PRINTING GROUP OF SURVEY OF INDIA.