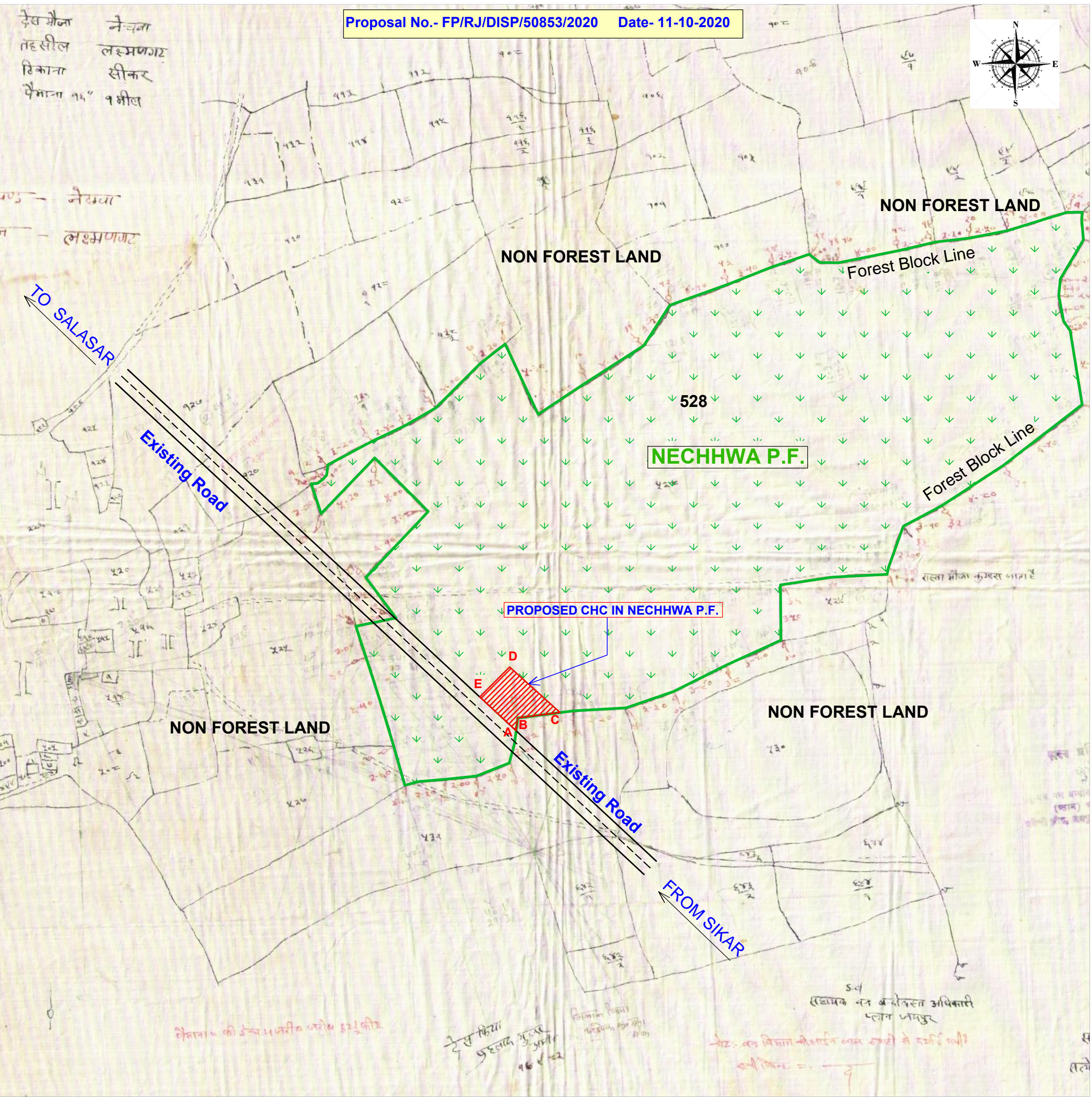


PROPOSED FOREST LAND FOR DIVERSION OF 0.60 HECT. AREA ON NEW KHASARA MAP FOR CONSTRUCTION OF "CHC,NECHHWA" IN FOREST BLOCK -NECHHWA(PF),VILLAGE- NECHHWA, RANGE - LAXMANGARH, TEHSIL-LAXMANGARH, DISTT- SIKAR (RAJ.)
APPLIED BY:- CHC,NECHHWA,SIKAR

SCALE- 1 CM.= 40 METER



INDEX

| SR NO | PARTICULARS | SYMBOL |
|-------|--|--------|
| 1 | FOREST BOUNDARY(F. LINE) | |
| 2 | NON FOREST LAND | |
| 3 | PROPOSED FOREST LAND FOR DIVERSION FOR CONSTRUCTION OF "CHC, NECHHWA", IN VILLAGE- NECHHWA, IN FOREST BLOCK NECHHWA(PF), RANGE - LAXMANGARH, TEHSIL- LAXMANGARH, DISTT- SIKAR (RAJ.) TOTAL AREA=0.60 Ha. | |

LIST OF GEO. COORDINATES

| POINT | LETTITUDE | LONGITUDE |
|-------|---------------|---------------|
| A | 27°36'50.80"N | 74°46'25.93"E |
| B | 27°36'51.23"N | 74°46'26.04"E |
| C | 27°36'51.68"N | 74°46'28.62"E |
| D | 27°36'54.09"N | 74°46'25.52"E |
| E | 27°36'52.41"N | 74°46'23.88"E |

Kuldip
 चिकित्सा अधिकारी प्रभारी
 सामु. स्वा. केन्द्र
 नेछवा (सीकर)

SIGN. OF APPLICANT