



No. F44D1
Scale 1:50,000

| | | |
|--------------------|------------------|------------------|
| G44U16 (63D/16) | G44V4 (63H/4) | G44V8 (63H/8) |
| F44C13 (64A/13) | F44D1 (64E/1) | F44D5 (64E/5) |
| F44C14 (64A/14) | F44D2 (64E/2) | F44D6 (64E/6) |

1 Kaim, MADHYA PRADESH.
2 Sidhi, MADHYA PRADESH.

भारतीय सर्वेक्षण विभाग SURVEY OF INDIA

1st Edition 2010.

Price : Rs. 70/-

CONVENTIONAL SYMBOLS

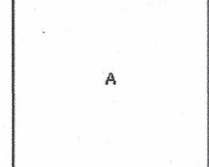
- Express highway with toll; with bridge; with distance stone
Roads, metalled: according to importance
Roads, double carriageway: according to importance
Unmetalled road: Gull-track, Puck-track with pass, Foot-path
Stream: with track in bed, unconfined, Canal
Dam: masonry or rock-filled, weir, Well
River: dry with water channel, with island & rocks, Tidal river
Submerged rocks, Shoal, Swamp, Reeds
Wells: lined, unlined, Tube-well, Spring, Tanks: perennial, dry
Embankments: road or rail, tank, Broken ground
Railways, broad gauge: double, single with station; under construction
Railways, other gauges: double, single with distance stone
Mineral line or tramway, Kin. Cutting with tunnel
Contours with sub-features, Rocky slopes, Cliffs
Sand features: (1) flat, (2) sand-hill (dune), (3) dunes/shifting
Towns or Villages: inhabited, deserted, Fort
Huts: permanent, temporary, Tower, Antiquities
Temple, Chhatra, Church, Mosque, Igth, Tomb, Graves
Light-house, Lighthouse, Buoy, Lighted, unlighted, Anchorage
Mine: Vene on hills, Grass, Scrub
Palms: palmyra, other, Plantain, Coffer, Bamboo, Other trees
Areas: cultivated, wooded, Surveyed tree
Boundary, international
state, demarcated, undemarcated
district, subdivision, taluk or taluk, famel
Boundary pillars: surveyed, uncoloured
Height, triangulated station, point, approximate
Bench-mark geodetic, tertiary, canal
Post office, Telegraph office, Overhead tank
Rest house or inspection bungalow, Circuit house, Police station
Camping ground, Forest: reserved, protected
Special names: administrative, locality or tribal
Hospital, Dispensary, Veterinary, Hospital / Dispensary
Aerodrome, Helipad, Tourist site
Power line: with pylons surveyed; with poles unsurveyed

NOTES

Heights are in metres and above Indian mean sea level.
Contours are approximate.
A relative height e.g., 50' represents the approximate height in metres between the top and bottom of a steep slope.
The triangulated heights and contours in this sheet have not been adjusted to the heights of the spirit-levelled bench-marks and may not be strictly in accordance with them.

COMPILATION INDEX

A Surveyed during 1967-68. Updated for major details during 2005-06.



Projection - UTM Datum - WGS 84

Magnetic Variation from True North about 1° West in 2005.
(Decreasing by about 1' annually)

500 m to 1 cm
1:50,000
2 cm to 1 km
3 Kilometres

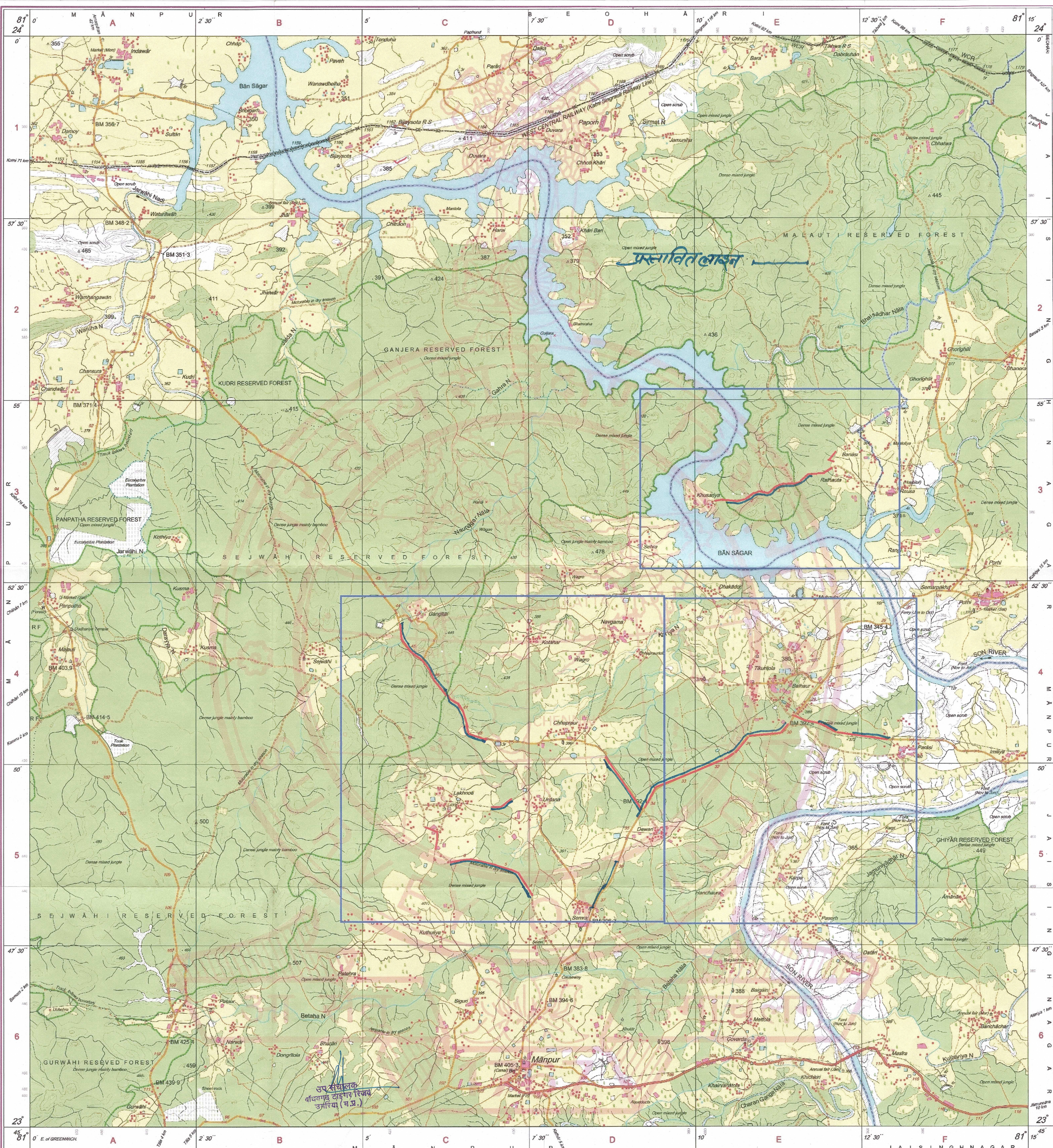
CONTOUR INTERVAL: 20 METRES

For further details about this map, please contact
Director
Madhya Pradesh Geo-Spatial Data Centre
Survey of India
Survey Colony, Vijaynagar
Jabalpur.

WEBSITE - www.surveyofindia.gov.in

Reproduction in whole or part by any means is prohibited
without the written permission of Survey of India, the
National Mapping Agency.

GOVERNMENT OF INDIA COPYRIGHT: 2010.



REG. No. 9330 -SPG D710 (Madhya Pradesh) GDC-1:50,000-101074.

अनुमति के बिना प्रकाशित करने से निषेध है।
Published under the direction of Surveyor General of India,
Survey of India, HMT Banka Estate, Post Box No.37, Dehra Dun-248001 (Uttarakhand),
Department of Science & Technology, Government of India.

General Manager
Madhya Pradesh, Lal Nigam, Jabalpur
P.O. - SHARAD

PRINTED AT THE SOUTHERN PRINTING GROUP OF SURVEY OF INDIA.