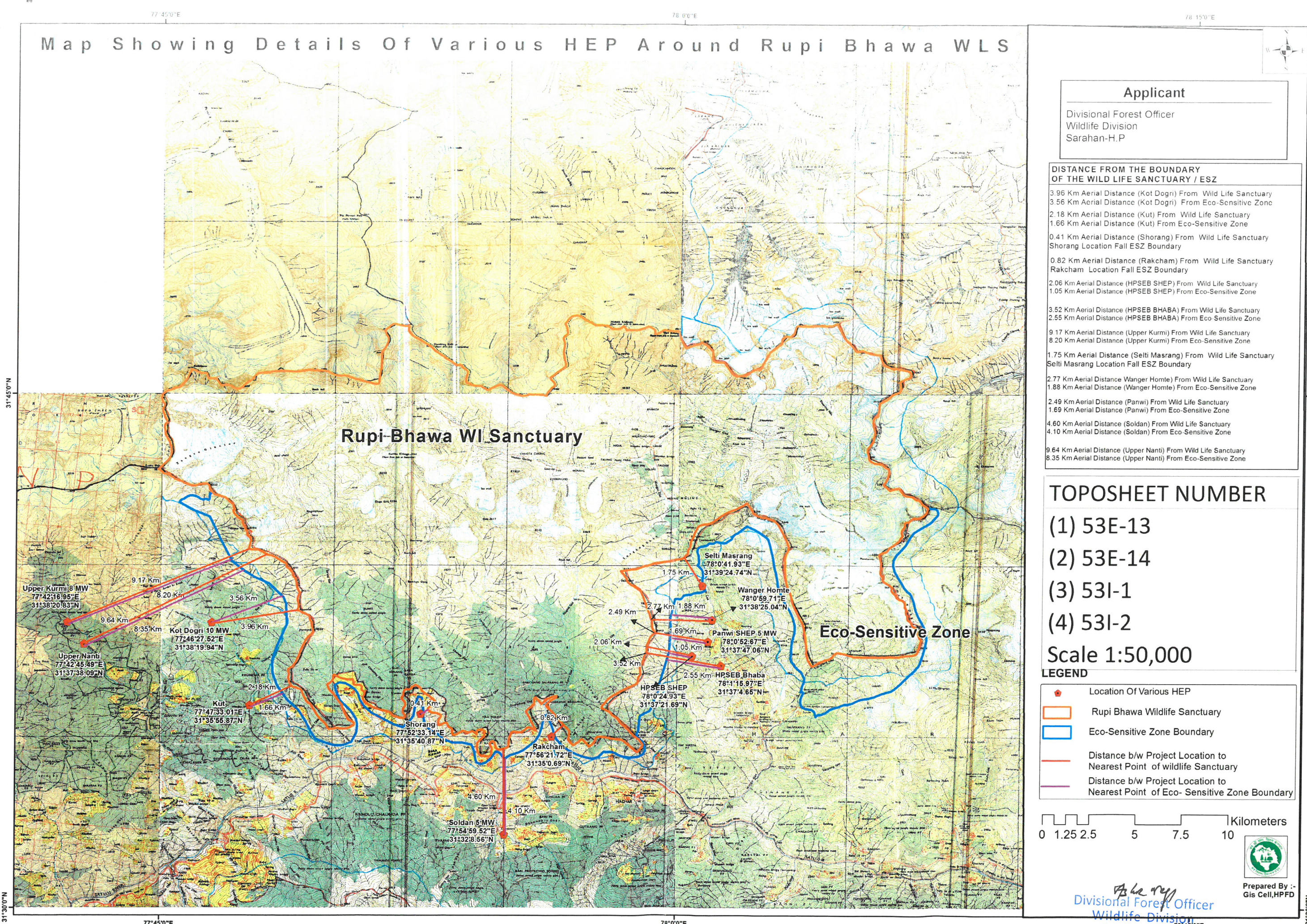


Map Showing Details Of Various HEP Around Rupri Bhawa WLS



Applicant

Divisional Forest Officer
Wildlife Division
Sarhan-H.P

DISTANCE FROM THE BOUNDARY OF THE WILD LIFE SANCTUARY / ESZ

- 3.96 Km Aerial Distance (Kot Dogri) From Wild Life Sanctuary
- 3.56 Km Aerial Distance (Kot Dogri) From Eco-Sensitive Zone
- 2.18 Km Aerial Distance (Kut) From Wild Life Sanctuary
- 1.66 Km Aerial Distance (Kut) From Eco-Sensitive Zone
- 0.41 Km Aerial Distance (Shorang) From Wild Life Sanctuary
- Shorang Location Fall ESZ Boundary
- 0.82 Km Aerial Distance (Rakcham) From Wild Life Sanctuary
- Rakcham Location Fall ESZ Boundary
- 2.06 Km Aerial Distance (HPSEB SHEP) From Wild Life Sanctuary
- 1.05 Km Aerial Distance (HPSEB SHEP) From Eco-Sensitive Zone
- 3.52 Km Aerial Distance (HPSEB BHABA) From Wild Life Sanctuary
- 2.55 Km Aerial Distance (HPSEB BHABA) From Eco-Sensitive Zone
- 9.17 Km Aerial Distance (Upper Kurmi) From Wild Life Sanctuary
- 8.20 Km Aerial Distance (Upper Kurmi) From Eco-Sensitive Zone
- 1.75 Km Aerial Distance (Seldi Masrang) From Wild Life Sanctuary
- Seldi Masrang Location Fall ESZ Boundary
- 2.77 Km Aerial Distance (Wanger Homle) From Wild Life Sanctuary
- 1.88 Km Aerial Distance (Wanger Homle) From Eco-Sensitive Zone
- 2.49 Km Aerial Distance (Panwi) From Wild Life Sanctuary
- 1.69 Km Aerial Distance (Panwi) From Eco-Sensitive Zone
- 4.60 Km Aerial Distance (Soldan) From Wild Life Sanctuary
- 4.10 Km Aerial Distance (Soldan) From Eco-Sensitive Zone
- 9.64 Km Aerial Distance (Upper Nanti) From Wild Life Sanctuary
- 8.35 Km Aerial Distance (Upper Nanti) From Eco-Sensitive Zone

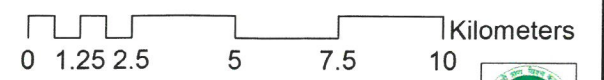
TOPOSHEET NUMBER

- (1) 53E-13
- (2) 53E-14
- (3) 53I-1
- (4) 53I-2

Scale 1:50,000

LEGEND

- Location Of Various HEP
- Rupri Bhawa Wildlife Sanctuary
- Eco-Sensitive Zone Boundary
- Distance b/w Project Location to Nearest Point of wildlife Sanctuary
- Distance b/w Project Location to Nearest Point of Eco- Sensitive Zone Boundary



Divisional Forest Officer
Wildlife Division
Sarhan, H. P.

Prepared By :-
Gis Cell, HPFD