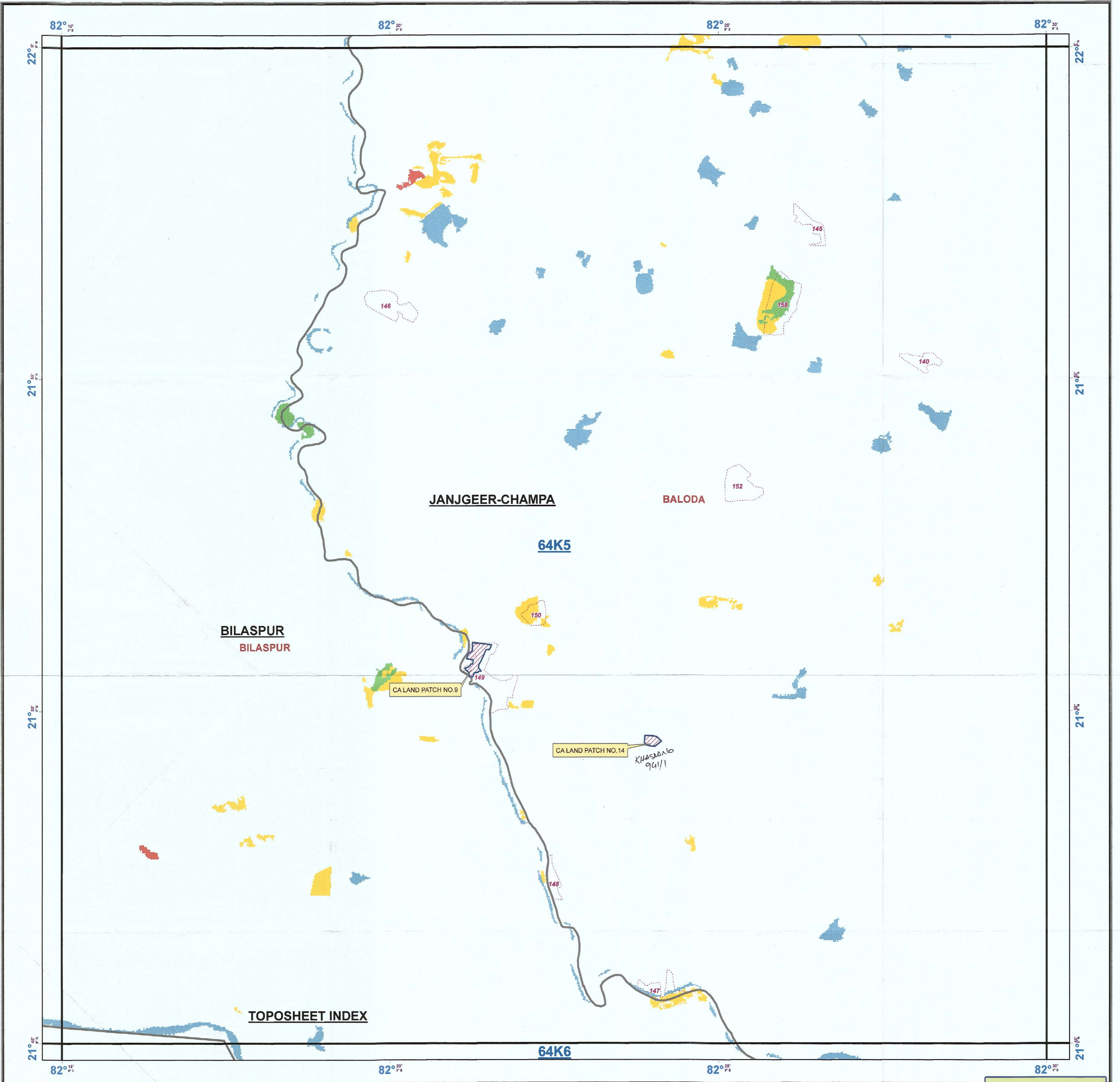
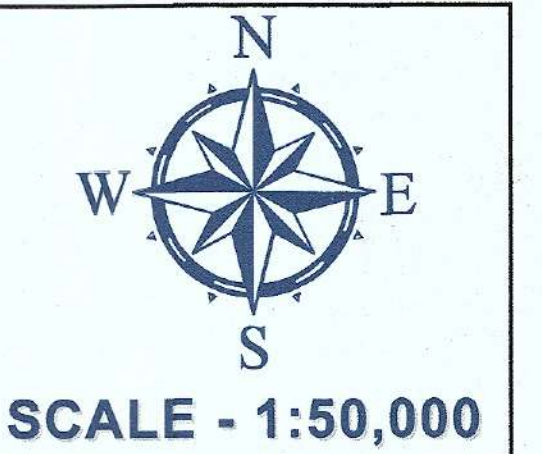


# FOREST COVER MAP

(FOR CA LAND PROPOSED AGAINST DIVERTED FOREST LAND FOR GOA - TAMNAR TRANSMISSION LINE PROJECT)

TOPOSHEET NO. 64-K 5

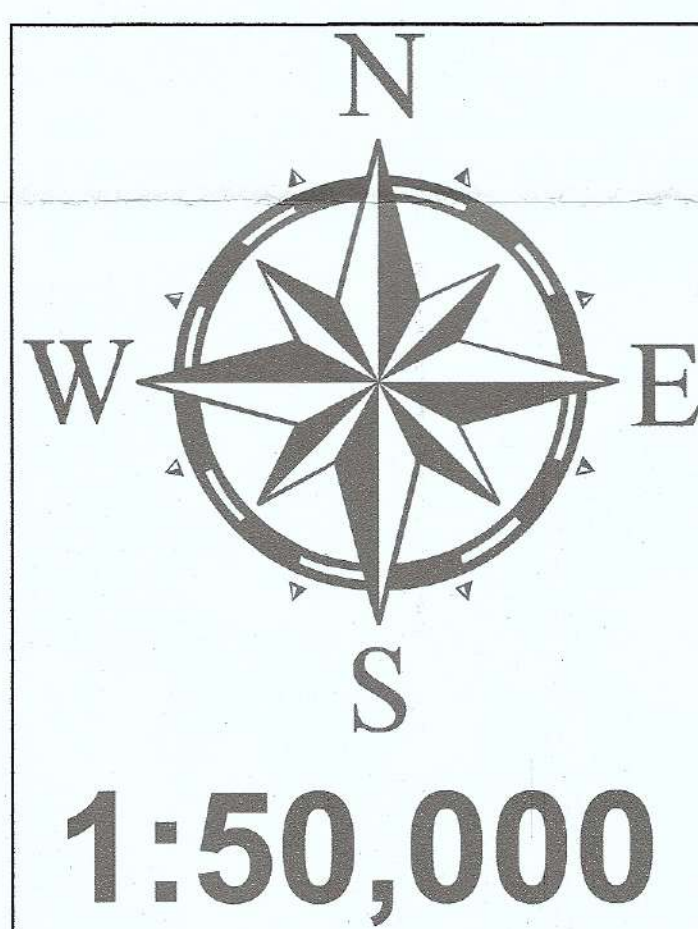


## Legend

- Proposed\_CA\_Land
- Division\_Boundary
- Range\_Boundary
- Compartment\_Boundary
- Vegetation**
  - Moderately Dense Forest
  - Non-Forest
  - Open Forest
  - Scrub
  - Very Dense Forest
  - Water

MAP PREPARED FOR GOA-TAMNAR TRANSMISSION PROJECT LTD.

64J4	64J8	64J12
64K1	64K5	64K9
64K2	64K6	64K10



**NOTE:-**  
\* Forest Cover based on Digital Interpretation of Data Period 2014-15  
IRS P6-LISS-III 23.5 m, IRS-Resourcesat 2 FSI Report 2015. □

निर्यात के लिये नहीं  
NOT FOR EXPORT

REG NO: FP/CG/TRANS/35105/2018-

**MAP SUBJECT:**  
FOREST COVER MAP FOR CA LAND, PROPOSED FOR COMPENSATORY AFFORESTATION AGAINST DIVERTED FOREST LAND TO CONSTRUCT 765KV DOUBLE CIRCUIT TRANSMISSION LINE FROM DHARAMJAIGARH TO RAIGARH, IN FAVOR OF GOA TAMNAR TRANSMISSION PROJECT LTD.

## SHAPEFILE PROVIDED BY USER AGENCY

SCALE 1:50,000	CoOrdinates/Projection System used :
Prepared by RGGS Bilaspur (C.G.)	COORDINATE SYSTEM OF SHAPEFILE: Geographic Coordinate System: GCS_WGS_1984 Datum: D_WGS_1984 Prime Meridian: Greenwich Angular Unit: Degree
Stock Mapping by	FOR AREA CALCULATION: WGS 1984 UTM Zone 44N
Data Source (s) :	1. Forest Boundaries are based on Stock Map (Scale 1: 15000) 2. Natural Features are based on Digital SOI Data (Scale 1: 50000)
Digitally Compiled and Printed at : REGIONAL GEOMATIC CENTER, BILASPUR	

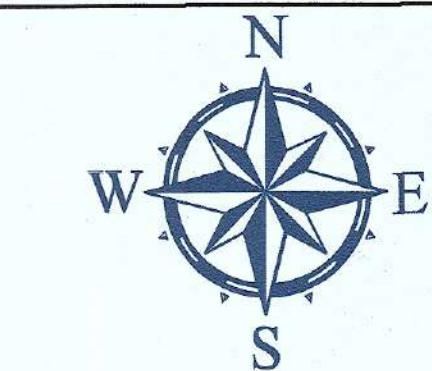
Disclaimer: - The Map provided is subject to inherent discrepancy amongst layers associated with incompatibility between different platforms of reference (L.C.C., W.G.S. 84 etc.) and probable human error angle in digitization. The user agency is advised to use the feature of map subject to prior authentication & supervision by the authorized person of the concerned forest division. The GEOMATIC CENTER BILASPUR shall not be responsible for any complications (legal or otherwise), arising out of this map.



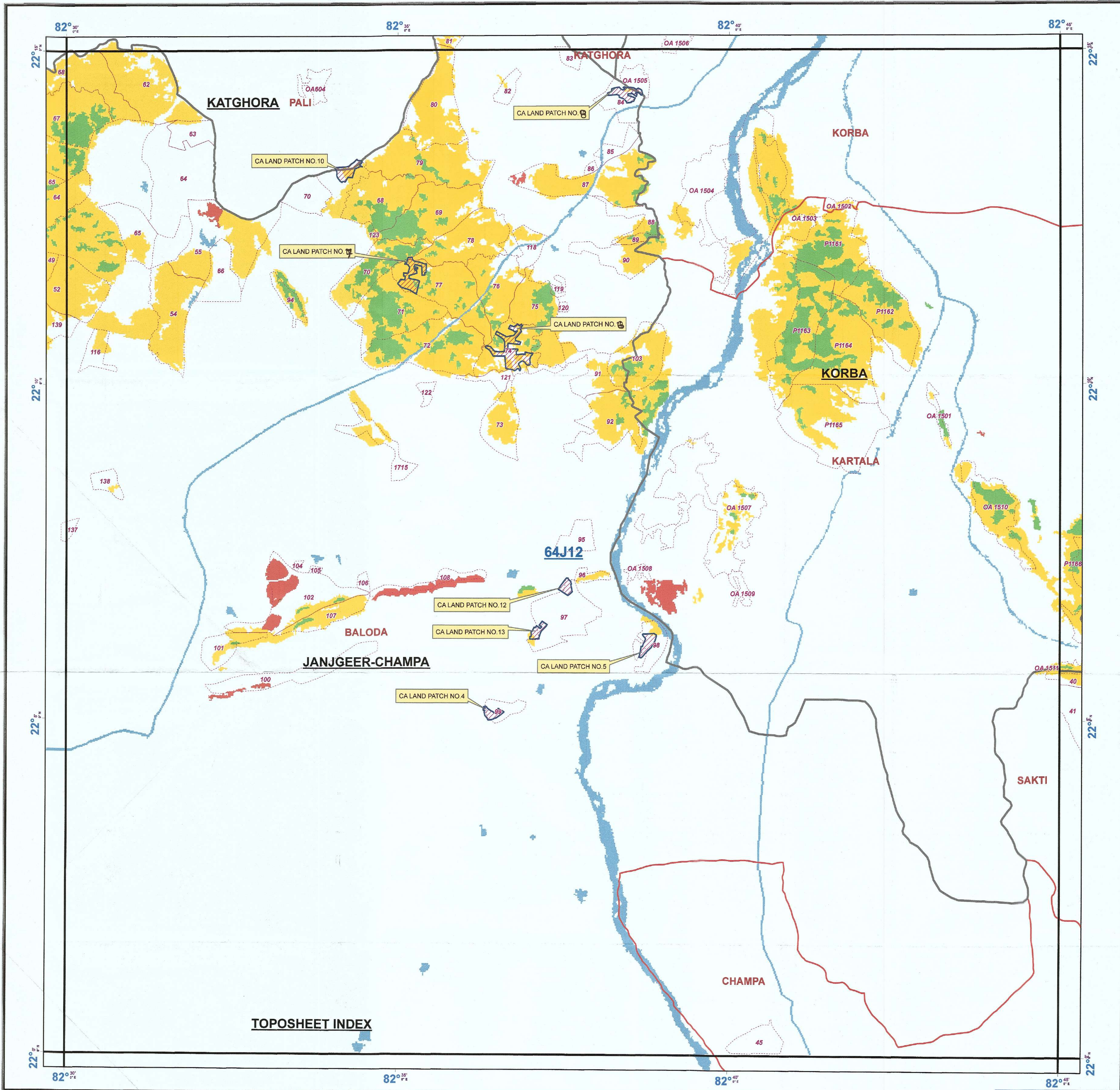
# FOREST COVER MAP

(FOR CA LAND PROPOSED AGAINST DIVERTED FOREST LAND FOR GOA - TAMNAR TRANSMISSION LINE PROJECT)

TOPOSHEET NO. 64-J 12



SCALE - 1:50,000

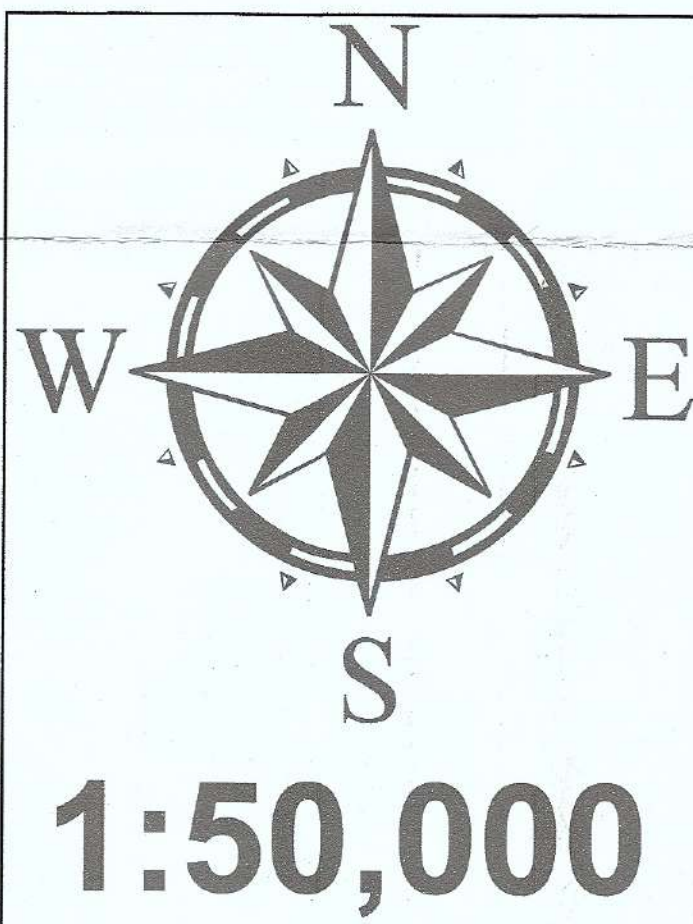


## Legend

- Proposed\_CA\_Land
- Division\_Boundary
- Range\_Boundary
- Compartment\_Boundary
- Vegetation**
  - Moderately Dense Forest
  - Non-Forest
  - Open Forest
  - Scrub
  - Very Dense Forest
  - Water

MAP PREPARED FOR GOA-TAMNAR TRANSMISSION PROJECT LTD.

64J7	64J11	64J15
64J8	64J12	64J16
64K5	64K9	64K13



### NOTE:-

\* Forest Cover based on Digital Interpretation of Data Period 2014-15  
IRS P6-LISS-III 23.5 m, IRS-Resourcesat 2 FSI Report 2015. □

निर्यात के लिये नहीं  
NOT FOR EXPORT

REG NO: FPI/CG/TRANS/35105/2018

MAP SUBJECT:  
FOREST COVER MAP FOR CA LAND, PROPOSED FOR COMPENSATORY  
AFFORESTATION AGAINST DIVERTED FOREST LAND TO CONSTRUCT  
765kV DOUBLE CIRCUIT TRANSMISSION LINE FROM DHARAMJAIGARH TO  
RAIGARH, IN FAVOR OF GOA TAMNAR TRANSMISSION PROJECT LTD.

### SHAPEFILE PROVIDED BY USER AGENCY

SCALE 1:50,000	CoOrdinates/Projection System used :
Prepared by FIC, Bilaspur (C.G.)	COORDINATE SYSTEM OF SHAPEFILE: Geographic Coordinate System: GCS_WGS_1984 Datum: D_WGS_1984 Prime Meridian: Greenwich Angular Unit: Degree
Stock Mapping by	FOR AREA CALCULATION: WGS 1984 UTM Zone 44N

### Data Source (s) :

1. Forest Boundaries are based on Stock Map (Scale 1: 15000)
2. Natural Features are based on Digital SOI Data (Scale 1: 50000)

Digitally Compiled and Printed at : REGIONAL GEOMATIC CENTER, BILASPUR

Disclaimer: - The Map provided is subject to inherent discrepancy amongst layers associated with incompatibility between different platforms of reference (L.C.C., W.G.S. 84 etc.) and probable human error angle in digitization. The user agency is advised to use the feature of map subject to prior authentication & supervision by the authorized person of the concerned forest division. The GEOMATIC CENTER BILASPUR shall not be responsible for any complications (legal or otherwise), arising out of this map.

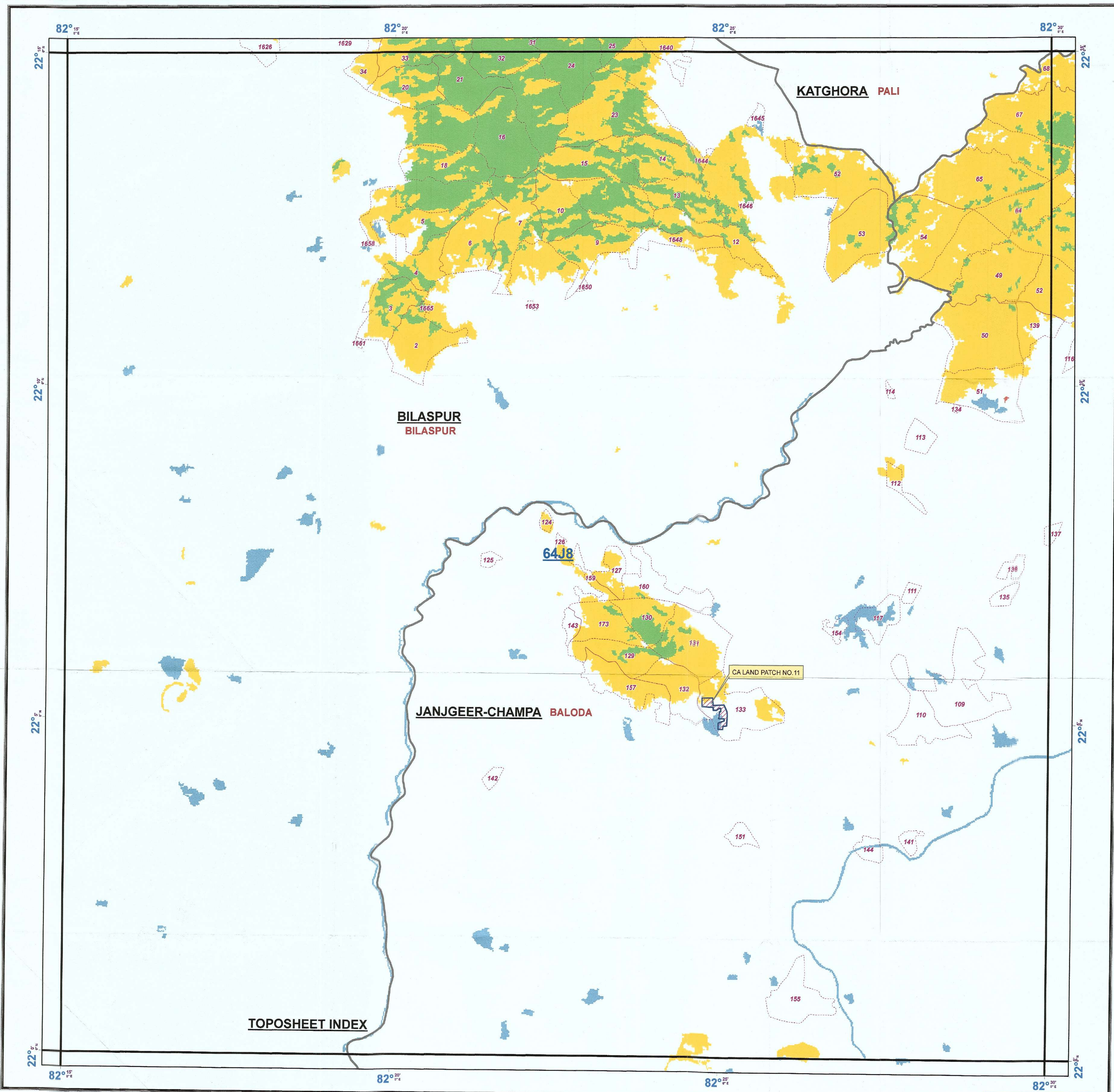


# FOREST COVER MAP

(FOR CA LAND PROPOSED AGAINST DIVERTED FOREST LAND FOR GOA - TAMNAR TRANSMISSION LINE PROJECT)

TOPOSHEET NO. 64-J 8

SCALE - 1:50,000



## Legend

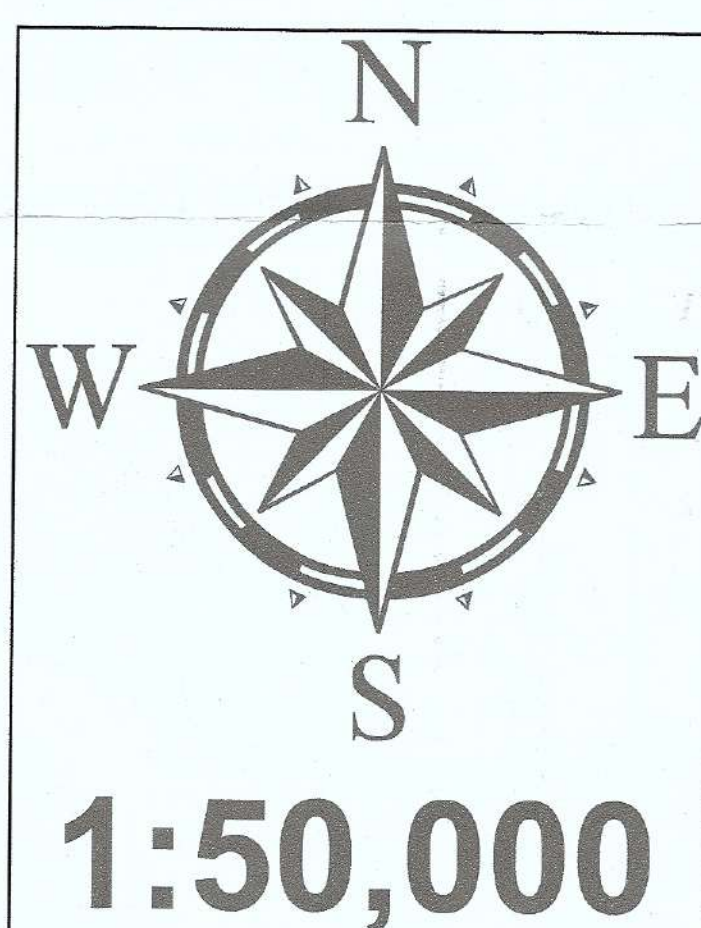
- Proposed\_CA\_Land
- Division\_Boundary
- Range\_Boundary
- Compartment\_Boundary

## Vegetation

- Moderately Dense Forest
- Non-Forest
- Open Forest
- Scrub
- Very Dense Forest
- Water

MAP PREPARED FOR GOA TAMNAR TR. P. LTD.

64J3	64J7	64J11
64J4	64J8	64J12
64K1	64K5	64K9



## NOTE:-

\* Forest Cover based on Digital Interpretation of Data Period 2014-15  
IRS P6-LISS-III 23.5 m, IRS-Resourcesat 2 FSI Report 2015. □

निर्यात के लिये नहीं  
NOT FOR EXPORT

REG NO: PP/CG/TRANS/35105/2018

MAP SUBJECT:  
FOREST COVER MAP FOR CA LAND, PROPOSED FOR COMPENSATORY  
AFFORESTATION AGAINST DIVERTED FOREST LAND TO CONSTRUCT  
765KV DOUBLE CIRCUIT TRANSMISSION LINE FROM DHARAMJAIGARH TO  
RAIGARH, IN FAVOR OF GOA TAMNAR TRANSMISSION PROJECT LTD.

## SHAPEFILE PROVIDED BY USER AGENCY

SCALE 1:50,000	CoOrdinates/Projection System used :
Prepared by RGC, Bilaspur (C.G.)	COORDINATE SYSTEM OF SHAPEFILE: Geographic Coordinate System: GCS_WGS_1984 Datum: D_WGS_1984 Prime Meridian: Greenwich Angular Unit: Degree
Stock Mapping by	FOR AREA CALCULATION: WGS 1984 UTM Zone 44N
Data Source (s) : 1. Forest Boundaries are based on Stock Map (Scale 1: 15000) 2. Natural Features are based on Digital SOI Data (Scale 1: 50000)	
Digitally Compiled and Printed at : REGIONAL GEOMATIC CENTER, BILASPUR	

Disclaimer: - The Map provided is subject to inherent discrepancy amongst layers associated with incompatibility between different platforms of reference (L.C.C., W.G.S. 84 etc.) and probable human error angle in digitization. The user agency is advised to use the feature of map subject to prior authentication & supervision by the authorized person of the concerned forest division. The GEOMATIC CENTER BILASPUR shall not be responsible for any complications (legal or otherwise), arising out of this map.