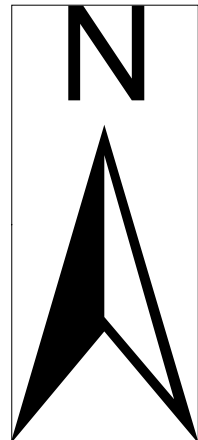
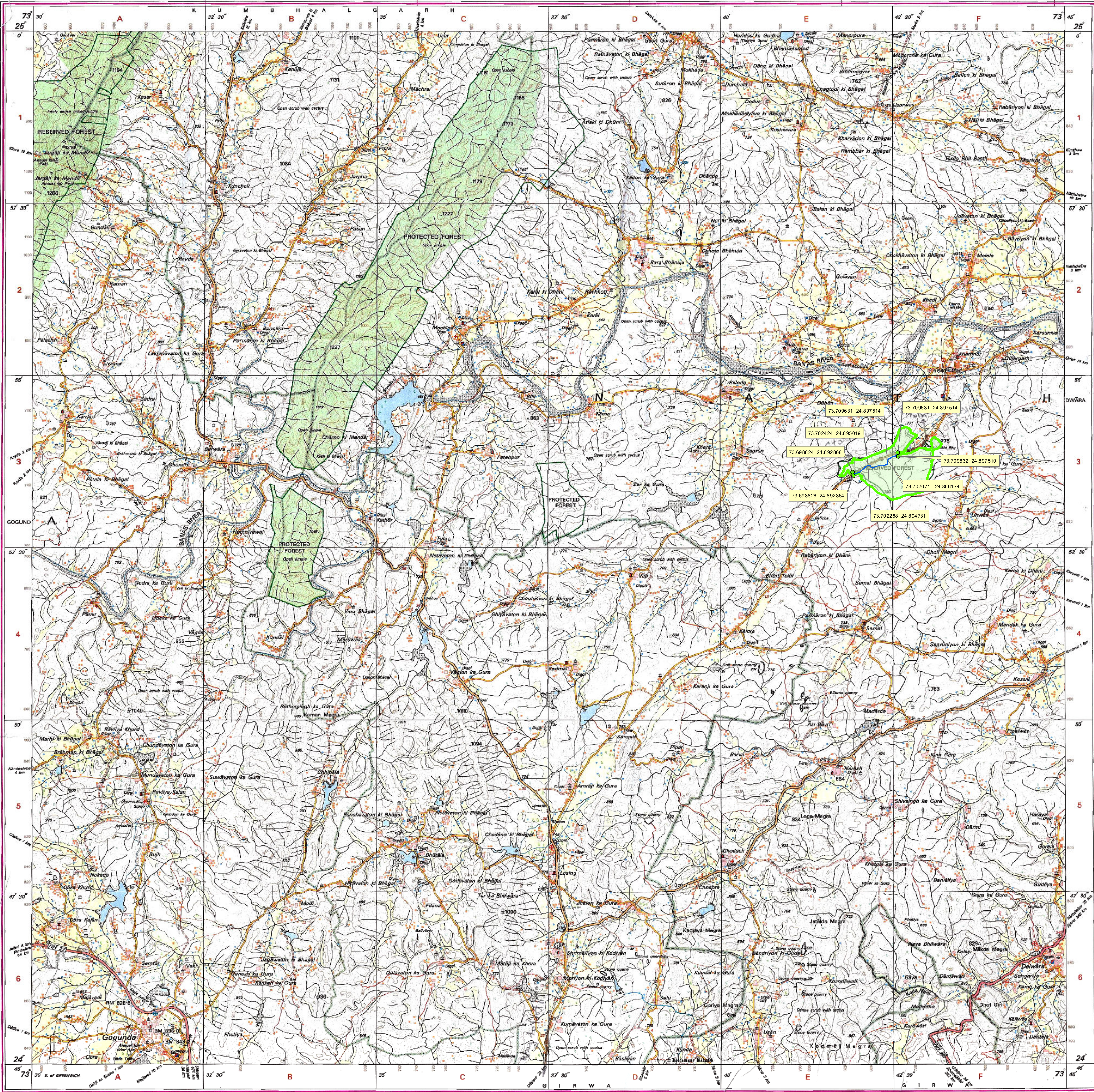


GPS MAP

FP/RJ/OFC/153375/2022 Dated 11 March 22  
Permission for laying underground OFC in ROW of existing along PWD road Nathdwara to Iswal from  
Lat/ Long 24°53' 51.08" N/ 73°42' 33.72" E to 24°53' 34.36" N/ 73°41' 55.73" in Rajsamand District.  
Total length & area in Forest area are 1.365 KM & 0.06143 ha  
respectively in Rajsamand District, Rajasthan.



PART OF TOPOSHEET NO. 45H/9



Lat/Long	Lat/Long	Width	OFC Length inside Forest Boundary	Area in Forest Boundary	OFC Length outside Forest Boundary	Area outside Forest Boundary
From	To	(m)	(m)	ha	(m)	ha
24°53'51.08" N/ 73°42'33.72" E	24°53'34.36" N/ 73°41'55.73" E	0.45	1365	0.06143	-	-
Total			1365	0.06143	-	-

For Jio Digital Fiber (Pvt.) Limited

Authorized Signatory

SCALE 1:50,000

0 2 4 8 Kilometers

Counter signed  
Deputy Conservator of Forest (Wildlife)  
Rajsamand

Legend

- Coordinate Point
- Proposed Alignment of OFC in Forest
- Forest Boundary