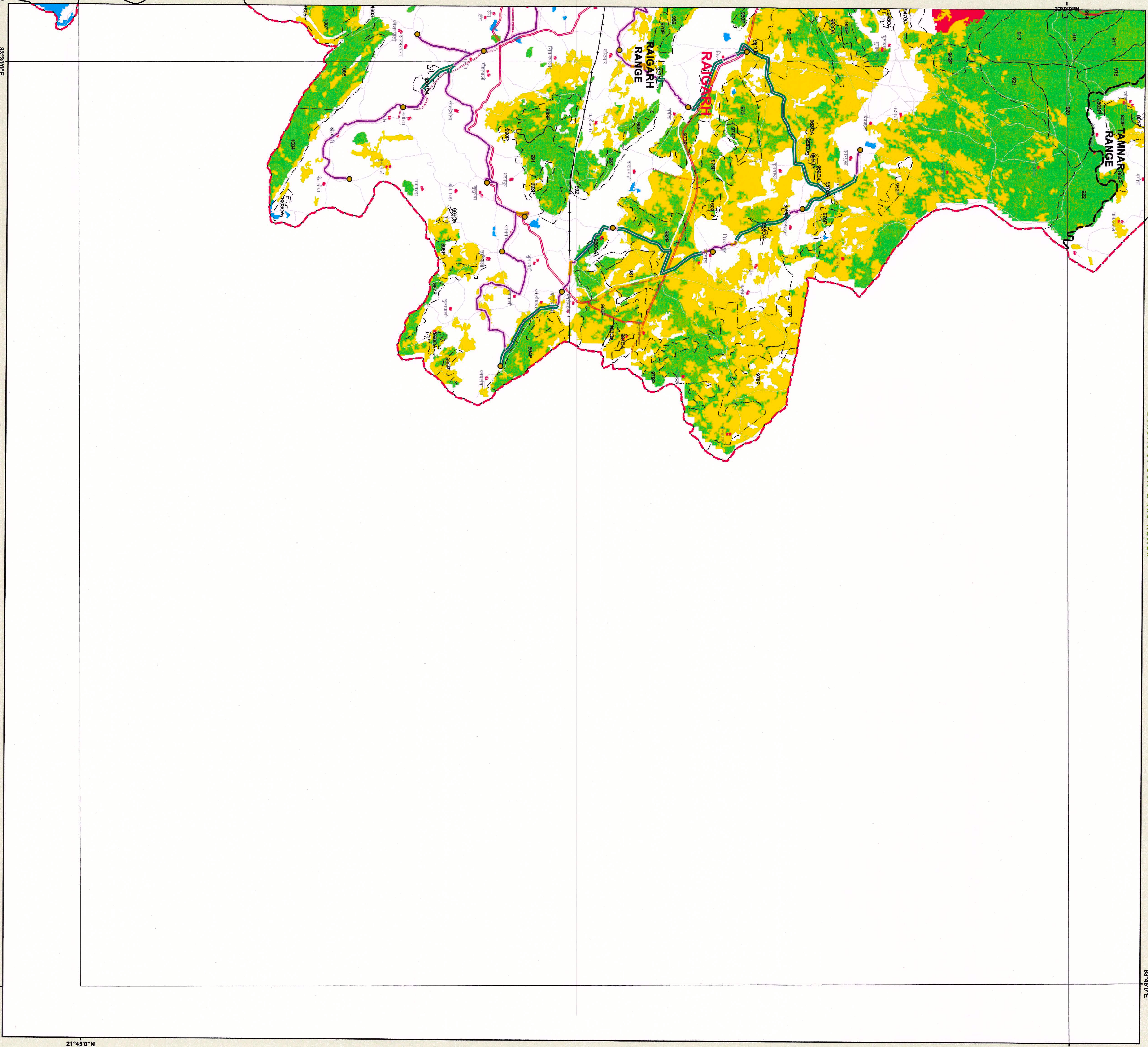


**Forest Cover Map  
Sheet. No. 64 O 09**

TOPSHEET NO. 64 0 09  
83°45'0"E



वन मण्डलाधिकारी  
रायगढ़, वनमंडल  
NOT FOR EXPORT

WATER

**Note :- Shapefile provided by user agencies.**

TOPOSHEET NO. 64009

**Data Sources:** 1. European Boundary from Street Map  
2. Forest Cover Based on Digital Interpretation of Data Period Dec 2010 to Jan 2017 (SSAI from Resource Center, a.k.a. RRC-SA (Resource Center))  
3. Forest Features are based on SSF Digital Data (Scale: 1:50,000)

**Method(s):** - Perennial Map  
This is an indicator map showing distribution of vegetation.  
Identification of Upland Area have not been shown.  
3. Validation of Digital Forest Area with survey of field have not done.  
4. All four difference outcome between vegetation and

**Source: FIRST SECTOR FOR ADULT CRIMINAL OFFENCE CLASSIFICATION SCHEME**  
 Very Low Rates Forest: All land with low cover (including grassland cover) of canopy, density of 70 % and above.  
 Moderately Low Rates Forest: All land with low cover (including grassland cover) of canopy density between 40% and 70% above.  
 High Rates Forest: All land with tree cover (including grassland cover) of canopy density between 20% and 40% above.  
 Soils: All forest lands with low tree growth rate (less than 10% above).  
 Stand Types: All forest lands with tree canopy density less than 10% above.  
 Stand Types: All forest lands with tree canopy density less than 10% above.

Prepared and Printed by:- GIS Cell  
Forest Management Information System Division, Raipur