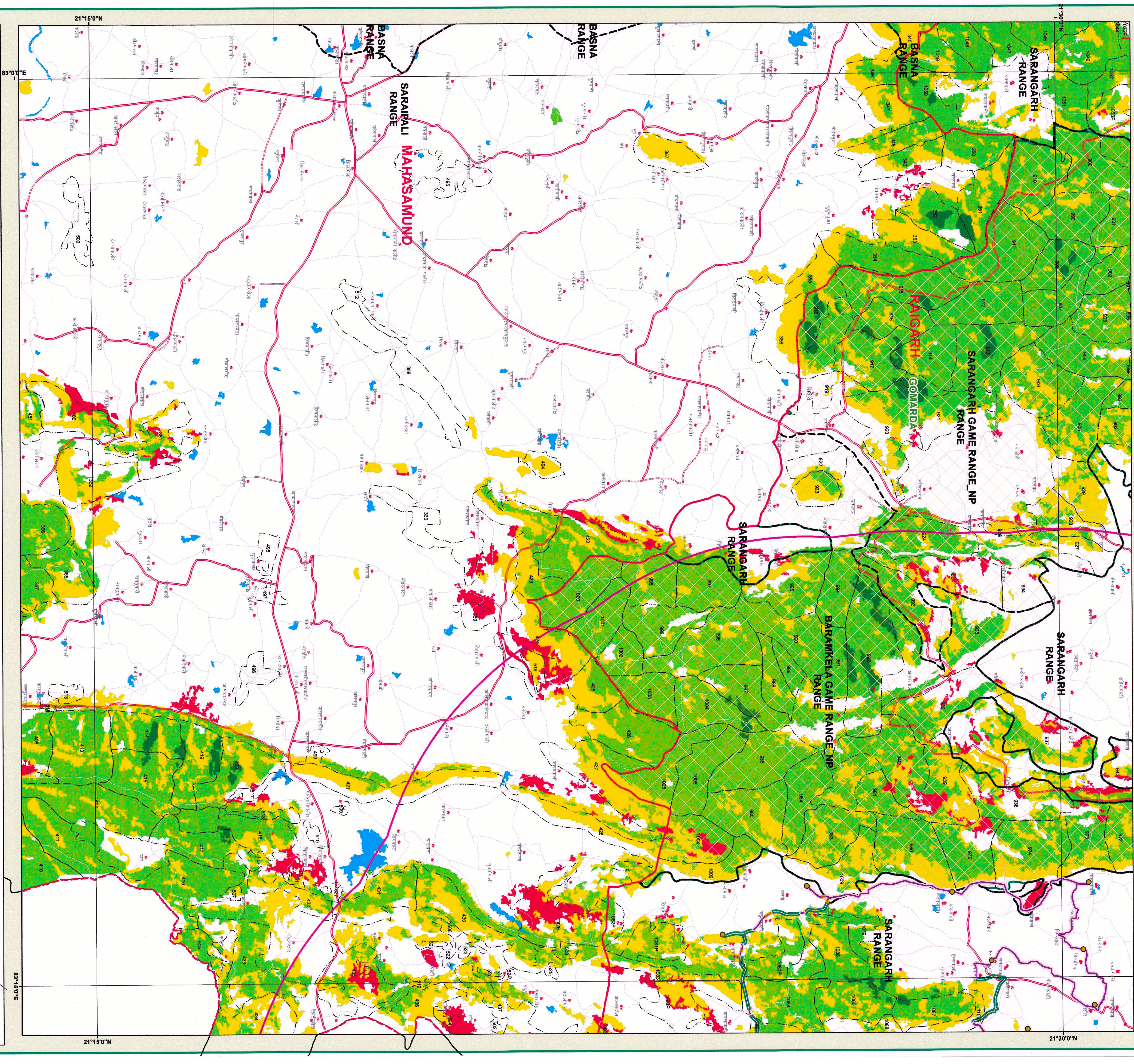


Chhattisgarh Forest Department  
Forest Cover Map  
Sheet. No. 64 O 03  
Save Trees, Save Forests and Save Wildlife for the  
Benefit of Self & the Nation

TOPSHEET NO. 64 O 03



LEGEND

- TOWN / VILLAGE  
● Gp. Name  
— Revenue\_Forest  
— Forest\_Route  
— Propose\_OF\_C\_Line  
— Revenue\_Forest\_Area  
— Non Forest Area  
— Forest\_Area  
— 10 Km Buffer  
— DIVISION REGION  
— Railway Line  
— Forest Range Boundary  
— Forest Compartment Boundary
- ROAD\_TYPE  
— Paved Area  
— Cart Track  
— Metalled Road  
— UnMetalled Road  
— chhattisgarh\_2019.img  
— Forest Cover  
— Forest\_Area  
— Non Forest  
— OPEN FOREST  
— SCRUB  
— VDF  
— WATER

1:50,000

0 0.5 1 2 3 4 Km



MAP PREPARED BY  
P. Chhattisgarh Forest Department  
Raipur (C.G.)  
Signature: P. Chhattisgarh Forest Department

MAP PREPARED FOR-  
ACEO, Chhattisgarh Intotech Promotion Society (CHIPS),  
2nd Floor, State Data Center Building,  
Civil Lines, Raipur (C.G.)

REG.No. :- FPC/G/OF/C/45093/2020

Diversion of forest land for non-forest purpose under Forest Conservation Act, 1980  
Proposed for Bharat Project Phase-II, Raigarh Forest Division Forest land required for  
Optical Fiber Cable Laying works under National Optical Fiber Network Project of Bharat  
Broadband Network Limited (BBNL) for providing Broadband Connectivity of Blocks to  
Gram Panchayats Optical Fiber Laying from Barankela, Tamnar and Raigarh Block  
Headquarter to Gram Panchayat Atee- 8.806 ha reg.

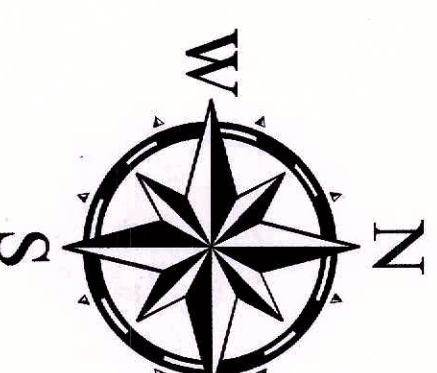
Note :- Shapell provided by user agencies.

64 O 03	64 O 04	64 O 05	64 O 06
64 K 14	64 O 02	64 O 08	64 O 09
64 K 15	64 O 03	64 O 07	64 O 10

Sheet to India

SCALE 1:50,000

TOPSHEET NO. 64 O 03



NOT FOR EXPORT



Prepared and Printed by:- GIS Cell,  
Forest Management Information System Division, Raipur