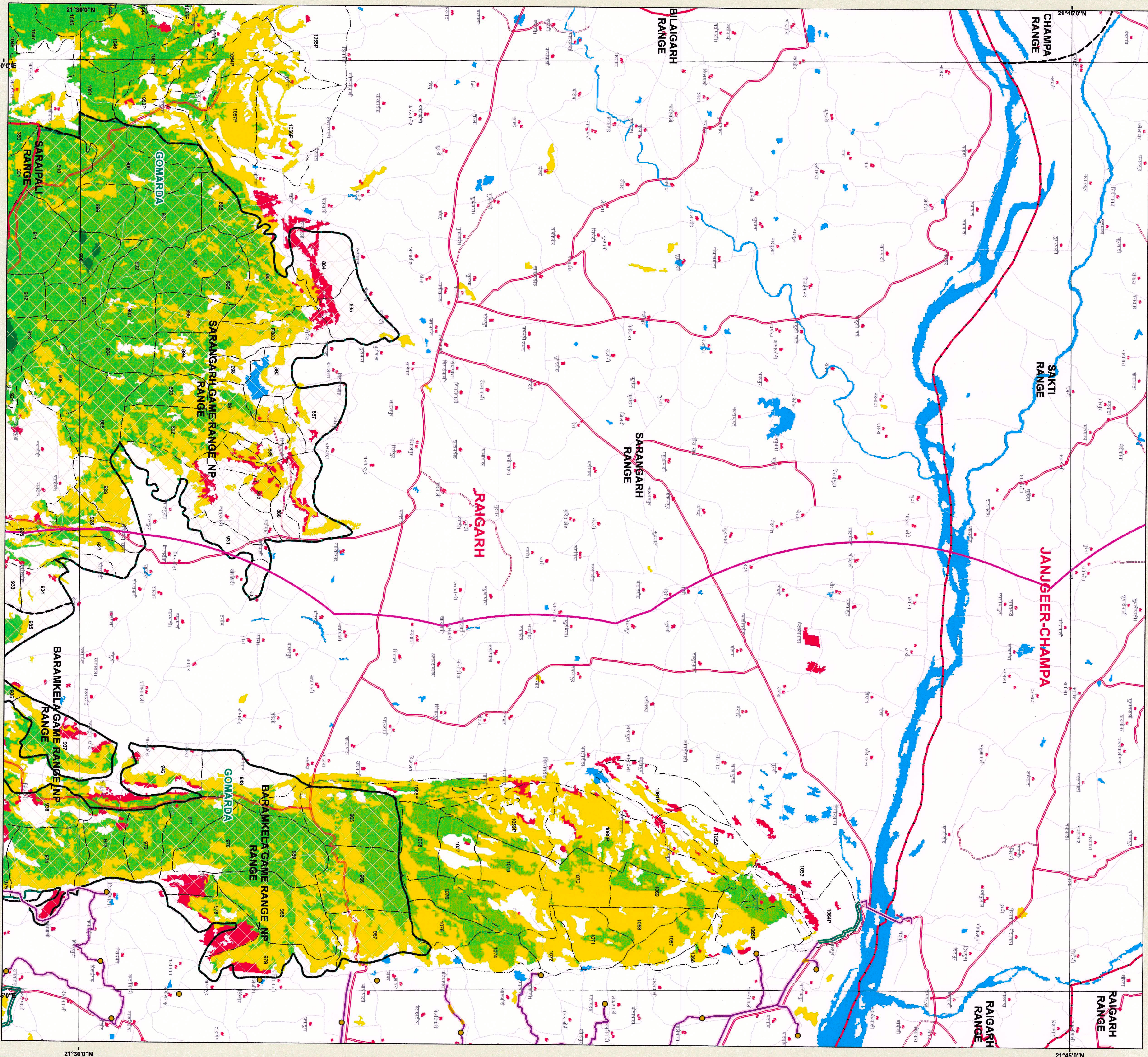


Chhattisgarh Forest Department
Forest Cover Map
Sheet. No. 64 O 02
Save Trees, Save Forests and Save Wildlife for the
Benefit of Self & the Nation

TOPOSHEET NO. 64 O 02



LEGEND

- TOWN / VILLAGE
- GP_Name
- Revenue_Forest
- Forest_Route
- Propose_OFC_Line
- Revenue_Forest_Area
- Non Forest Area
- Forest Area
- 10 Km Buffer
- DIVISION REGION
- Railway Line
- Forest Range Boundary
- Forest Compartment Boundary
- Protected Area
- ROAD_TYPE
- Cart Track
- Metalled Road
- UnMetalled Road
- chhattisgarh_2019.img
- Forest Cover
- MDF
- NON FOREST
- OPEN FOREST
- SCRUB
- VDF
- WATER

1:50,000

0 0.5 1 2 3 4 Km



MAP PREPARED BY
Project/Asset: Program
Signature: S. Singh

MAP PREPARED FOR:-
ACEO, Chhattisgarh Infotech Promotion Society (CHIPS),
2nd Floor, State Data Center Building,
Civil Lines, Raipur (C.G.)
REC.No. :- FPCG/OFC/45093/2020

Diversion of forest land for non-forest purpose under Forest Conservation Act, 1980
Proposed for BharatNet Project Phase-II Raigarh Forest Division Forest land required for
Optical Fiber Cable Laying works under National Optical Fiber Network Project of Bharat
Broadband Network Limited (BBNL) for providing Broadband Connectivity of Blocks to
Gram Panchayats Optical Fiber Laying from Baramkela, Tamnar and Raigarh Block
Headquarter to Gram Panchayat Area- 8.806 ha. reg.

Note :- Satellite provided by user agencies.

64 O 01	64 O 02	64 O 03	64 O 04
64 K 13	64 K 14	64 K 15	64 K 16
64 K 17	64 K 18	64 K 19	64 K 20
64 K 21	64 K 22	64 K 23	64 K 24

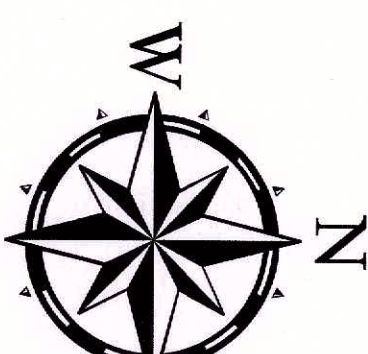
Sheet to Index

1. Component Boundary from Stock Map
2. Forest Cover Based on Digital Interpretation of Data from Dec-2017 to
Dec-2018 (S.S.II) from Resources-2 and RGS-45 (Reconnaissance-I)
3. Surveyed Forests are based on 300 Digital Line (Scale: 1:50,000)
and Chhattisgarh Database.

Source: - FOREST SURVEY OF INDIA FOREST COVER CLASSIFICATION SCHEME
Very Dense Forest: - All land with tree cover (including Mangrove
Forest) having canopy density of 70% and above.
Dense Forest: - All land with tree cover (including Mangrove Forest)
having canopy density between 40% and 70% above.
Open Forest: - All land with tree cover (including Mangrove Forest)
having canopy density between 10-40%.
Non Forest: - All forest lands with poor tree growth mainly at small or
Nil forest. Any Area not included in the above categories.

SCALE 1:50,000

TOPOSHEET NO. 64 O 02



NOT FOR EXPORT