

TOPO LOCATION MAP OF THE AREA SHOWN IN COLOR RED, SHOWING 50.0 HA. OF FOREST LAND FOR COMPENSATORY AFFORESTATION PURPOSE, IN DISTRICT - CHATRA, JHARKHAND.FOR NH-99 CHATRA BYPASS ROAD, CHATRA, JHARKHAND

निर्यात के लिये नहीं NOT FOR EXPORT

OPEN SERIES MAP

No. G45T8

Scale 1:50,000

G45T3	G45T7	G45T11
G45T4	G45T8	G45T12
F45B1	F45B5	F45B9

1 Giridih, JHARKHAND.
2 Bokaro, JHARKHAND.

भारतीय सर्वेक्षण विभाग SURVEY OF INDIA

1st Edition 2009. Price : Rs. 50 /-

CONVENTIONAL SYMBOLS

Express highway: with toll; with bridge: with distance stone

Roads, metalled: according to importance

Roads, double carriageway: according to importance

Unmetalled road: Cart-track, Pack-track with pass. Foot-path

Streams: with track in bed; undefined. Canal

Dams: masonry or rock-filled; earthwork. Tidal river

Submerged rocks. Shoal. Swamp. Reeds

Wells: lined, unlined. Tote-well. Spring. Tanks: perennial; dry

Entertainment: road or rail; park. Breeding ground

Railways, broad gauge: double; single with distance stone; day

Railways, other gauges: double; single with distance stone; day

Mineral line or tramway. Kin. Cutting with tunnel

Contours with sub-features. Rocky slopes. Cliffs

Sand features: (flat) (dune-hills) (spurs) (dunes) (hills)

Towns or Villages: inhabited; deserted. Fort

Huts: permanent; temporary. Tower. Antiquities

Temple. Chhatra. Church. Mosque. Idgah. Tomb. Graves

Lighthouses. Lightships. Buoys: lighted; unlighted. Anchorage

Mine. Vine on trellis. Grass. Scrub

Palms: palmistry; other. Pines. Conifers. Bamboo. Other trees

Areas: cultivated; wooded. Surveyed trees

Boundary: international

State demarcated; undemarcated

district subdivision; taluk or tehsil

Boundary pillars: surveyed; unsurveyed; village signpost

Heights: triangulated station; point; approximate

Bench-mark: geodetic; levelling; canal

Post office. Telegraph office. Overhead tank

Rail house or inspection bungalow. Circuit house. Police station

Camping ground. Forest: reserved; protected

Spaced names: administrative; locality or tribal

Hospital. Dispensary. Veterinary hospital

Airports: Heliport. Tourist site

Power line: with pylons surveyed; with poles unsurveyed

REFERENCES

AH 31 National Highway No. 31

PWD Public Works Department

NOTES

Heights are in metres and above Indian mean sea level.

Contours are approximate.

The kilometre scale numbers along roads and cart-roads are shown in upright type, e.g. 5 whereas milestone numbers are shown in upright type, e.g. 5.

A relative height of 8' marked along a canal indicates the height of the top of the canal embankment above the adjacent country.

Tanks, shown dry in this area, usually contain water from June to February.

Numerous wells exist throughout the sheet; only the important ones have been shown.

Unmetalled roads, in this sheet, appear which there is no descriptive remark, are generally metalled in dry season.

Cart-track along Left Main Canal is jeepable in dry season. Permission to use this is required from the irrigation authorities.

The triangulated heights and contours in this sheet have not been adjusted to the heights of the epoch-levelled bench-marks and may not be strictly in accordance with them.

COMPILED INDEX

A. Compiled from 1:25,000 survey 1977-78. Updated for major details during 2004-05.

Projection - UTM Datum - WGS 84

Magnetic Variation from True North about 1° West in 2005. (Decreasing by about 1' annually).

1:50,000

500 m to 1 cm

2 cm to 1 km

3 kilometres

CONTOUR INTERVAL 10 METRES

For further details about this map, please contact

Director

Jharkhand Geo-Spatial Data Centre

Survey of India, Dordanda

Ranchi-834002

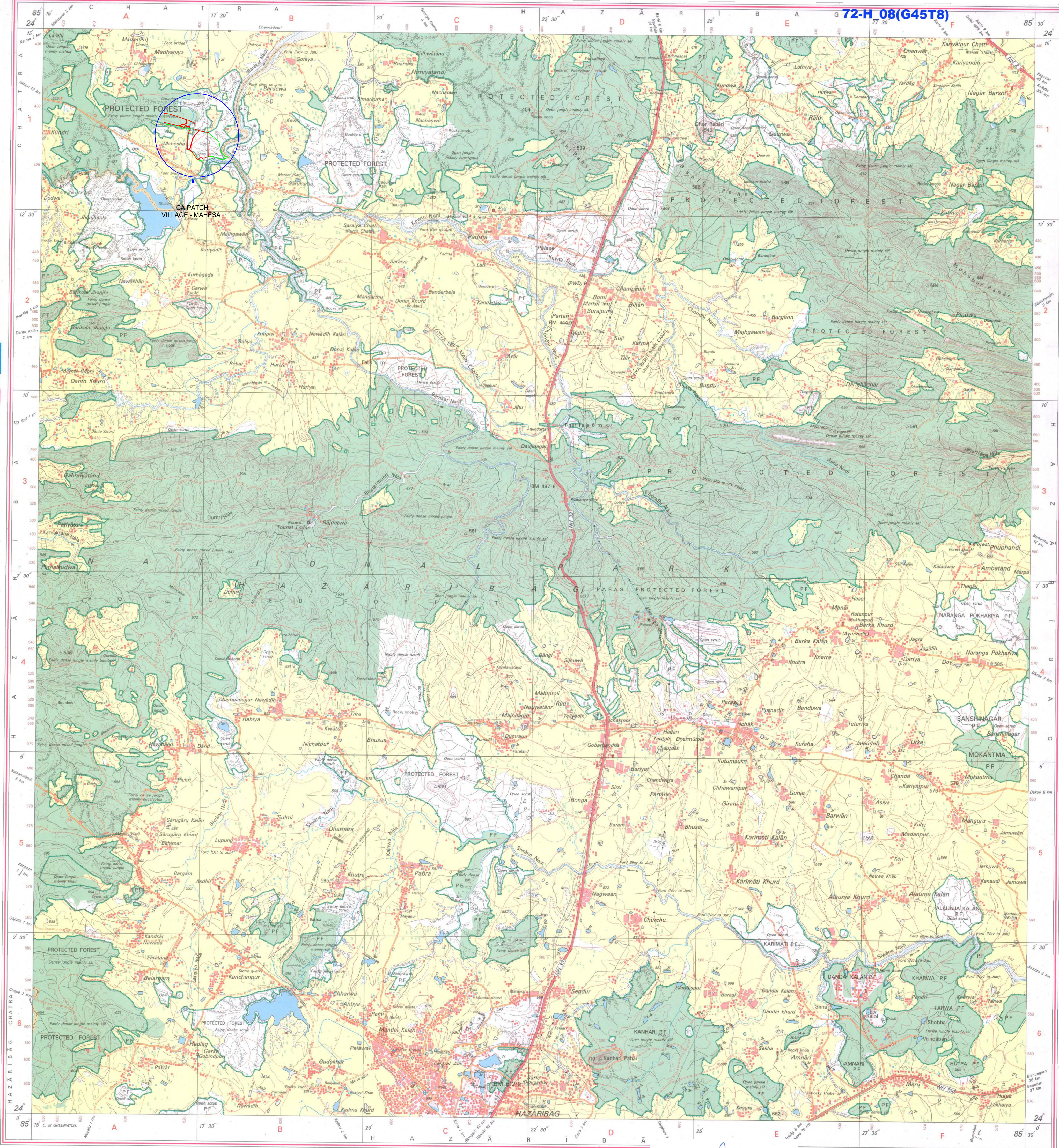
Fax : 0651-2452789

WEBSITE - www.surveyofindia.gov.in

Reproduction in whole or part by any means is prohibited without the written permission of Survey of India, the National Mapping Agency.

LEGEND

C.A. LAND BOUNDARY



REG. No. 8197-SPG D 09 (Jharkhand GDC-1:50,000-1015)

भारत के सर्वेक्षण के विभाग में प्रकाशित
Published under the direction of Surveyor General of India.
Survey of India, Hathi-Barkala Estate, Post Box No. 37, Dehra Dun-248001 (Uttarakhand)
Department of Science & Technology, Government of India.

(Ranjit Kumar Barnwal)
Executive Engineer
NH Division, Hazaribagh

Surveyed & Drawn by	Checked by

TOPO LOCATION MAP OF THE AREA SHOWN IN COLOR RED, SHOWING 130.0 HA. OF FOREST LAND FOR COMPENSATORY AFFORESTATION PURPOSE, IN DISTRICT - CHATRA, JHARKHAND.FOR NH-99 CHATRA BYPASS ROAD, CHATRA, JHARKHAND

